

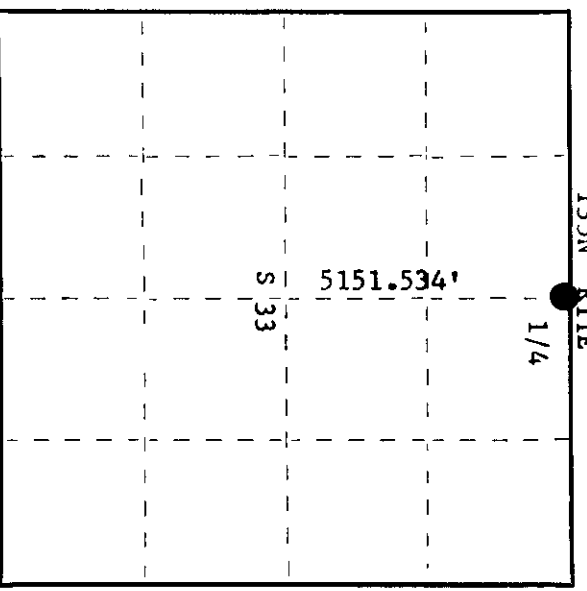
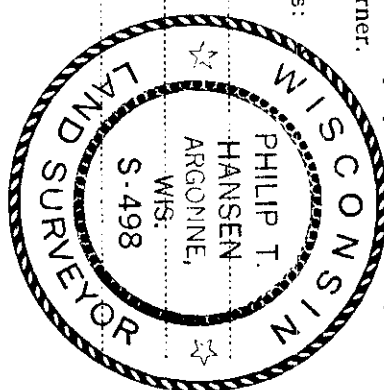
CERTIFIED LAND CORNER RESTORATION

Index No. V-11

State of Wisconsin } ss.  
County of Oneida

I, Phillip T. Hansen, do hereby certify that on the 6th day of September, 1978, I ~~found~~ established the 1/4 corner ~~marked~~ of the Sections 28 & 33 corner of Sections 28 & 33 Township 35, North, Range 11 East, Fourth Principal Meridian, as described hereon; and that from this evidence I established a new monument and accessories as described hereon to perpetuate the original location of this corner.

Resident witnesses:  
Glen Barker  
Jim Claffin  
Herb Wagoner



○ = Corner monument restored.

History of original corner establishment: Original corner established by Hiram C. Fellows, Deputy Surveyor, in 1859, from which white pine 10" bears S 54° W, 8 links and white pine 8" bears N 26° E, 25 links.

Corner set by D.H. Vaughan, county surveyor, in 1901. Found the stump of original white pine BT grubbed out and laying beside the road. Corner was in center of old wagon road. August Applecamp swore that the original post was setting where he had set the new corner. This corner was 78.04 chains north of the S 1/4 corner which he recovered.

Description of corner evidence found:  
No evidence of any corner recovered. Established corner in centerline of old N-S road. Set corner at 78.0535 chains N 1° 11' 01" west of the S 1/4 corner.

Description of monument and accessories I established to perpetuate the original location of this corner.  
Drove 1 1/2" x 18" iron pipe 5" below surface of old 1/4 line road.  
Set 2 3/4" Berntsen A-1 Federal Monument 15' east for witness corner.  
Monument projects 18" above ground. Cap stamped:  
Marked NBT's from true corner

Maple 6" N66°E, 60.58'  
B. Spruce 12" S66°W, 41.0 feet  
Maple 5" S42°E, 54.0 feet  
all scribed 1/4 BT

Dated at Rhineland, Wis., this 11th day of September, 1978.

Signature Phillip T. Hansen Title Registered Land Surveyor Registration No. S-498  
(County Surveyor, Registered Land Surveyor, or other duly authorized official)

Office of Register of Deeds, County of Oneida  
Instrument was filed in this office for record on the 25th day of September, 1978, at 2:50 o'clock P. M.

Doni George Fuchs  
(Register of Deeds)

By: \_\_\_\_\_ Deputy

3511280020

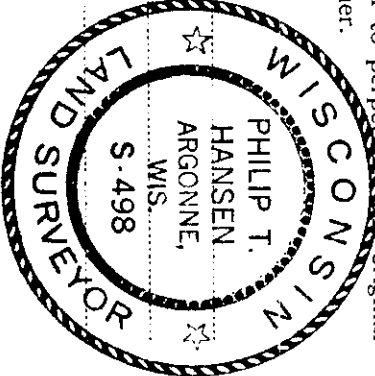
CERTIFIED LAND CORNER RESTORATION

Index No. V-11

State of Wisconsin } ss.  
County of Oneida

I Phillip T. Hansen, do hereby certify that on the 18th day of July, 1978, I ~~found~~ relocated the Quarter corner of Sections 28 & 33 Township 35, North, Range 11 East, Fourth Principal Meridian, as described hereon; and that from this evidence I established a new monument and accessories as described hereon to perpetuate the original location of this corner.

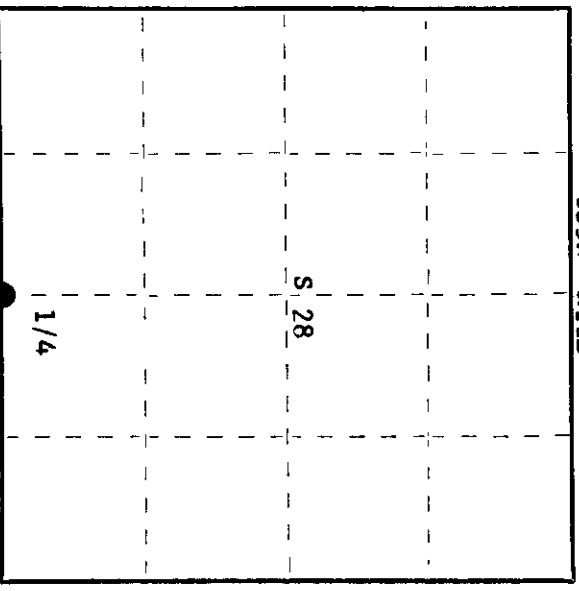
Resident witnesses:  
Glen Barker  
Jim Clafflin  
Herb Wagoner  
John Masbaum



History of original corner establishment:  
Original corner established by Wm. E. Dougherty, Deputy Surveyor, in 1859, from which white pine 10" bears S54°W 8 links and fir 8" bears N26°E, 25 links. D.H. Vaughan, county surveyor's notes dated December 5, 1901 states that the N 1/4 corner sets in the Wagon Road and that the stump of the white pine (original) is grubbed out and lies beside the road. August Applecamp swears that the post was set where it now stands when the original trees were standing.

Description of corner evidence found:  
No evidence of any corner recovered.  
Established the corner at 5150.59' (78.04 chains) N 1° 11' 45" W from 1/4 corner between sections 33 & 4 which was Vaughan's recorded distance in 1901. The corner falls in the old N-S 1/4 line Wagon Road.

Description of monument and accessories I established to perpetuate the original location of this corner.  
Set 2 1/2" Bernitsen A-1 Federal Monument (O.C.). Stamped:  
Monument projects 12" above ground.  
Placed a rock cairn around base of monument.  
Marked NBT's - Maple 6" N44°W 36.55' T35N R11E  
Maple 7" S84°W 43.15' S+28  
Maple 6" S25°W 35.28' 1/4 S+33  
W. Spruce 6" N48°E 58.78' S498-1978  
all scribed 1/4 BT.



○ = Corner monument restored.

Dated at Rhinelander, Wis., this 26th day of July, 1978.  
Signature Phillip T. Hansen, Title Registered Land Surveyor Registration No. S-498  
(County Surveyor, Registered Land Surveyor, or other duly authorized official)

Office of Register of Deeds, County of Oneida  
Instrument was filed in this office for record on the 21st day of August, 1978 at 10:00 o'clock P. M. I hereby certify that the within

Doris Venner Kuehn  
(Register of Deeds)

By: \_\_\_\_\_ Deputy

0200871153