

CERTIFIED LAND CORNER RESTORATION

Index No. V-10

State of Wisconsin

County of Oneida } ss.

I Phillip T. Hansen, do hereby

certify that on the 6th day

of September, 1978, I ~~found~~

~~established~~ restored the W 1/16

corner of Section 28 & 33

Township 35, North, Range

11 East, Fourth Principal Meridian,

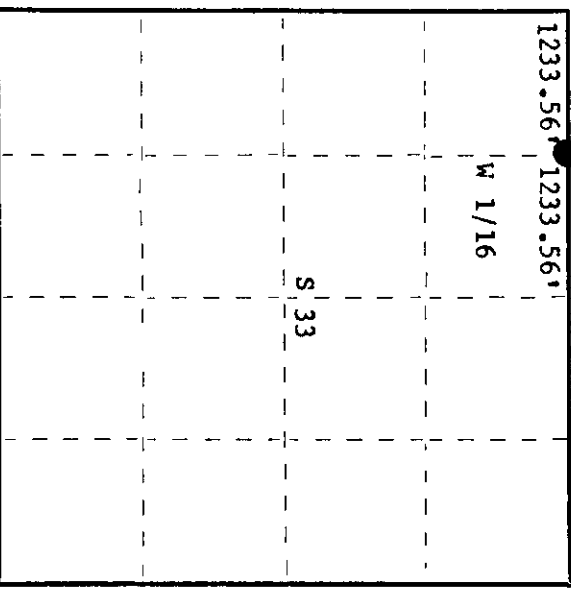
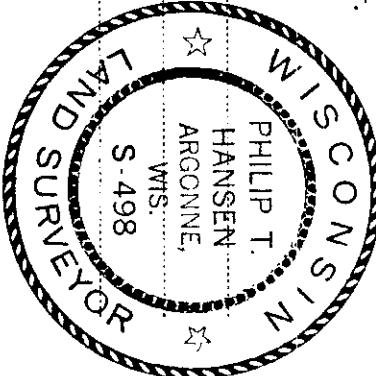
as described hereon; and that from this evidence I established a new monument and accessories as described hereon to perpetuate the original location of this corner.

Resident witnesses:

Glen Barker

Jim Claflin

Herb Wagoner



History of original corner establishment:  
No records of any previous surveys.

Description of corner evidence found:  
No evidence of any corner recovered. Corner established by traverse and computation. Computed distance from Section Corner 28 & 29, 32 and 33 to 1/4 corner between sections 28 & 33 was 2467.12 feet at bearing N 85° 10' 54" W. Set W 1/16 corner at 1233.56' intermediate.

Description of monument and accessories I established to perpetuate the original location of this corner.  
Set 1 1/2" iron pipe with 2" brass cap, projecting 24" above ground. Cap stamped:  
Marked NBT's - Maple 7" S48°W, 44.19 feet  
Maple 7" S86°E, 61.89 feet

S498  
T35N R11E  
W 1/16 S+28  
S+33  
CPI-1978

Dated at Rhinelander, Wis., this 11th day of September, 1978.

Signature Phillip T. Hansen Title Registered Land Surveyor Registration No. S-498  
(County Surveyor, Registered Land Surveyor, or other duly authorized official)

Office of Register of Deeds, County of Oneida  
Instrument was filed in this office for record on the 25th day of September, 1978  
at 2:50 o'clock P. M.

Dennis George Fuchs  
(Register of Deeds)

By \_\_\_\_\_ Deputy

3511280030