

CERTIFIED LAND CORNER RESTORATION

State of Wisconsin }
 County of Oneida } ss.

I Philip T. Hansen do hereby certify that on the 26th day of August 1975, I found evidence of the N 1/16 corner of Sec 27 and 28 Township 35 North, Range 11 East, Fourth Principal Meridian, as described hereon; and that from this evidence I established a new monument and accessories as described hereon to perpetuate the original location of this corner:

Description of original monument and accessories and subsequent restorations:

Corner established by H. C. Lawrence, Registered Land Surveyor, during his retracement Survey in 1958. From reestablished 1/4 corner he ran N 1°20' W on random line 39.71 chains to a point 18 links east, in center line of road.

Set cedar post at N 1/16 9 lks east of random line at 19.85 1/2 chains intermediate.

Description of corner evidence found:

Recovered 7" cedar post, squared and scribed N 1/16 S 27, N 1/16 S 28 in fair condition. No OBTs were observed.

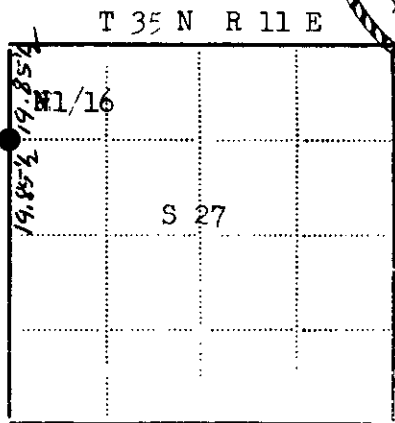
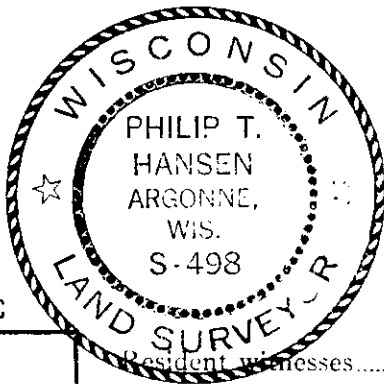
Description of monument and accessories I established to perpetuate the location of this corner:

Replaced cedar post with 1 1/2" iron pipe w/brass cap stamped

NBT White Spruce 7" N 72° W 33.7 lks scribed 1/16 BT

White Spruce 8" S 7° W 39 lks scribed 1/16 BT

S 498
 T 35 N R 11 E
 S28 / S27
 N1/16
 CPI 1975



- - Corner monument restored
- -

Resident witnesses: Glen Barker and Jim Claflin

Dated at Rhinelander Wisconsin, this 15th day of September 1975.

Signature: *Philip T. Hansen* Title: Reg. Land Surveyor
 (County Surveyor, Registered Land Surveyor, or other duly authorized official)

Surveyors Registration No. S. 498

Office of Register of Deeds, County of Oneida

I hereby certify that the within instrument was filed in this office for record on the 14th day of October 1975, and was filed in Book No. _____ Page No. _____ of County Records.

Signature: *Doris Verage Kuehn* Title: Register of Deeds

Township 35 North, Range 11 East, Section 27, Index No. _____, Page No. _____

S-13