

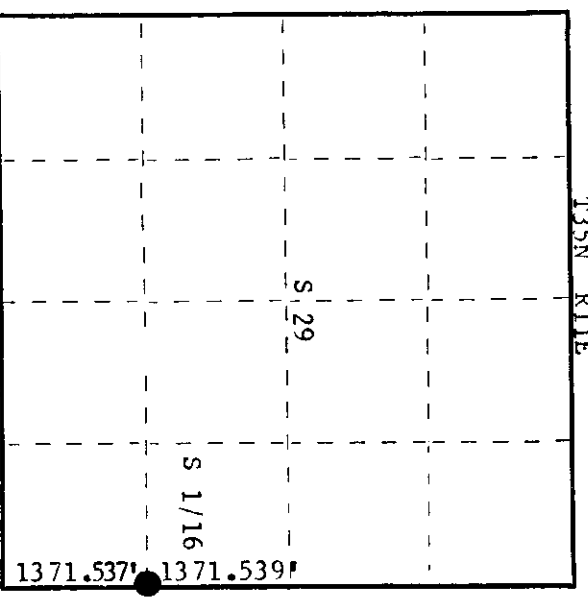
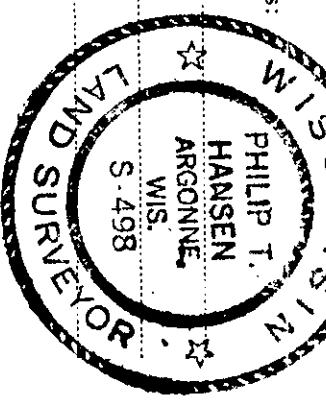
CERTIFIED LAND CORNER RESTORATION

Index No. U-9

State of Wisconsin }
 County of Oneida } ss.

I Phillip T. Hansen, do hereby certify that on the 16th day of August, 1978, I ~~restored~~ re-established the S 1/16 corner of Section 28 & 29 Township 35 North, Range 11 East, Fourth Principal Meridian, as described hereon; and that from this evidence I established a new monument and accessories as described hereon to perpetuate the original location of this corner.

Resident witnesses:
Glen Parker
Jim Claflin
Herb Wagoner
John Masbaum



History of original corner establishment:
 No records of any previous survey.

Description of corner evidence found:
 No evidence of any corner recovered. Corner established by traverse and computation. E 1/4 corner set at 2743.007 feet intermediate from traverse and computation. S 1/16 corner set at 1371.539 feet intermediate between E 1/4 corner and section corner 28, 29, 32 and 33 at bearing S 2° 59' 45" W.

Description of monument and accessories I established to perpetuate the original location of this corner.
 Set a 1-1/2" iron pipe with 2" brass cap, projecting 28", stamped:
 Marked NBT's -
 Maple 6" N4°W 18.14 feet
 Maple 8" S58°W 24.66 feet, scribed 1/16 BT.

S498
 T35N R11E
 S29 + S28
 S 1/16
 CPI-1978

Dated at Rhineland, Wis., this 21st day of August, 1978

Signature Phillip T. Hansen Title Registered Land Surveyor Registration No. S-498
 (County Surveyor, Registered Land Surveyor, or other duly authorized official)
 Office of Register of Deeds, County of Oneida, I hereby certify that the within instrument was filed in this office for record on the 21st day of May, 1979 at 2:00 o'clock P. M.

Dennis Verage
 (Register of Deeds)

By Dennis Verage Deputy

3511291000