

CERTIFIED LAND CORNER RESTORATION

Index No. V-3

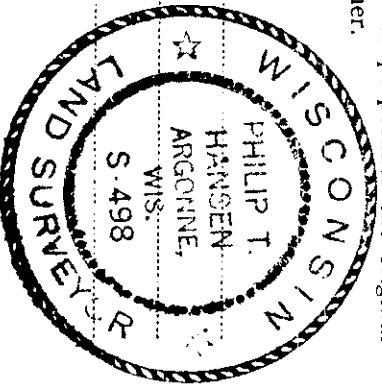
State of Wisconsin } ss.  
County of Oneida

I, Phillip T. Hansen, do hereby certify that on the 2nd day of May, 1980, I ~~found~~ established ~~the~~ Quarter corner of Sections 30 - 31 Township 35, North, Range 11 East, Fourth Principal Meridian,

as described hereon; and that from this evidence I established a new monument and accessories as described hereon to perpetuate the original location of this corner.

Resident witnesses:

Glen Barker  
Jim Claffin  
Herb Wagoner



History of original corner establishment:  
Original corner established by Wm. E. Dougherty, Deputy Surveyor, in 1859 from which White Birch 10" bears N62°E 6 links and Lind 36" bears S71°W 4 links. D.H. Vaughan, County Surveyor, could not recover the corner in 1901, but assumed it to be at intersection of E-W and N-S road when he ran the survey for the N-S 1/4 line road in section 31.

Description of corner evidence found:

No evidence of any corner recovered except it being the intersection of E-W section line and N-S 1/4 line road. Established the alignment of these two roads to identify the centerlines and the intersection. Stanley Rustic and Vern Applecamp, local land owners, have accepted this as being the corner for years.

Description of monument and accessories I established to perpetuate the original location of this corner.

Drove a 1-1/2" x 18" iron pipe at intersection for true corner 4" below the surface of road. Set a 2-1/2" Bernitsen A-1 Federal Monument N 5° W 40 feet for witness corner.

Monument projects 6" above ground. Cap stamped:

Marked B.O. - Power Pole 3511-3022 N52°E 39.92 (nail in side)  
Telephone Receptl S29°W 29.62' (SE corner of box)  
NBT - Red Pine 10" S68°E 85.35' - not blazed.  
Distances and bearings to true corner.  
S498 - 1980  
T35N R11E  
1/4 S 30 W.C.  
S 30 W.C.  
S5°E 40' to Cor.

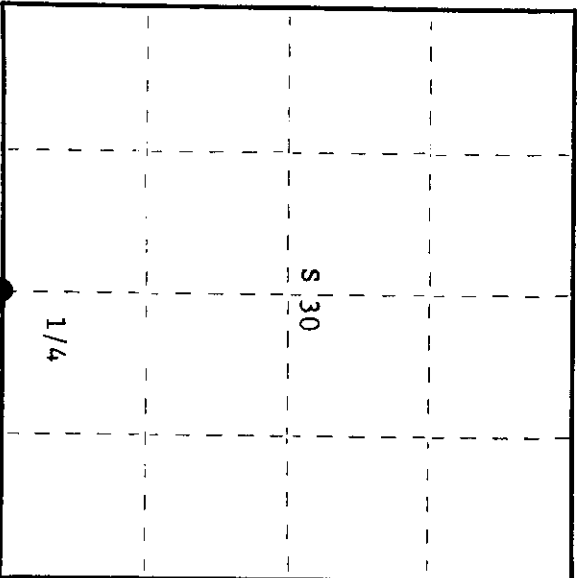
Dated at Rhineland, Wis., this 30th day of May, 1980.

Signature: Phillip T. Hansen Title Registered Land Surveyor Registration No. S-498  
(County Surveyor, Registered Land Surveyor, or other duly authorized official)

Office of Register of Deeds, County of Oneida, I hereby certify that the within instrument was filed in this office for record on the 5th day of June, 1980 at 1:30 o'clock M.

Doris George Kuehn  
(Register of Deeds)

○ = Corner monument restored.



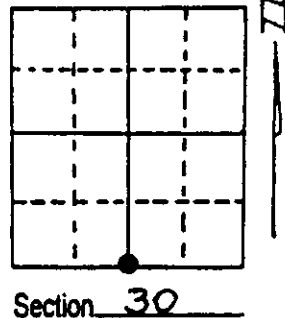
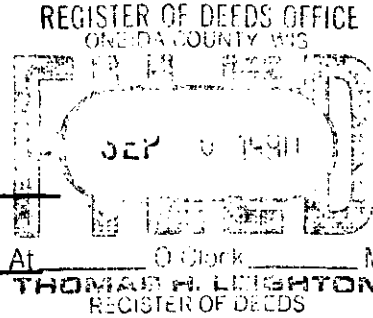
# U.S. PUBLIC LAND SURVEY MONUMENT RECORD

Note: This form is intended and designed to fulfill all requirements of Wisconsin Administrative Code, Chapter A-E 7.08 U.S. Public Land Survey Monument Record (3) (a) (b) (c) (d) (e) (f) (g) (h) (i). An additional sheet may be added if necessary to conform with said requirements.

(a) Corner location: Township 35 North  
 Range 11 East/West

Town/City/Village E. SCHOEPKE

County ONEIDA



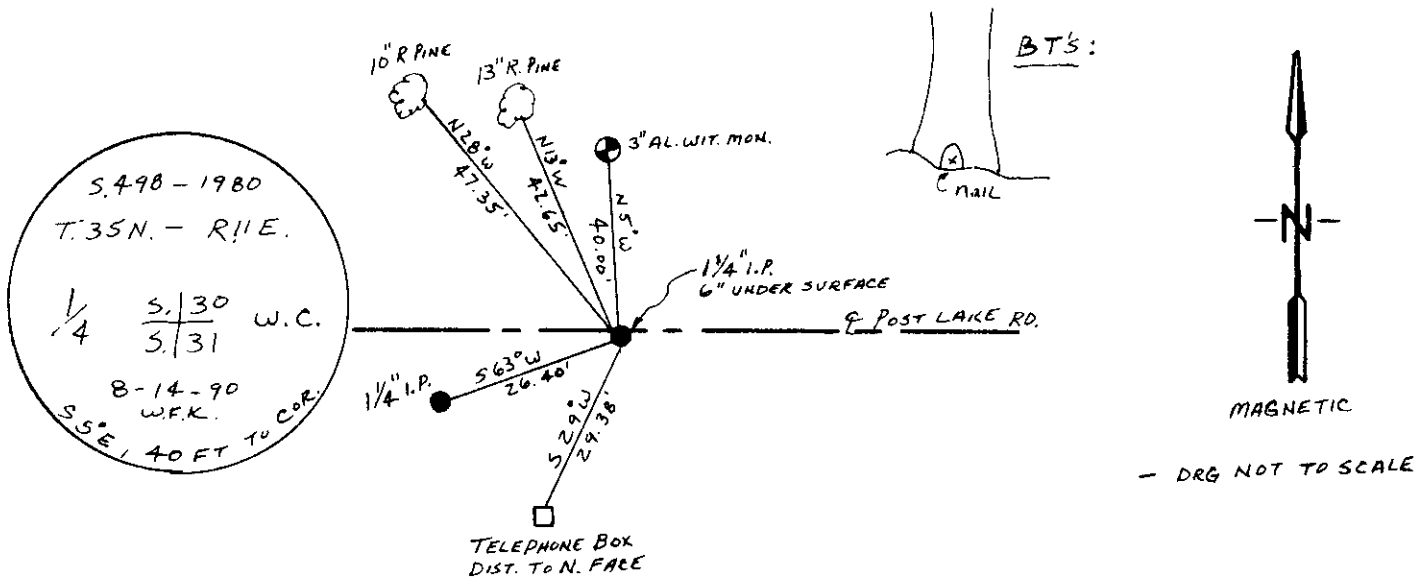
Section 30

(b) (f) (g) (h) Description of monument found at this corner and if it was accepted, state all evidence (material, testimonial, occupational, plats, records, other monuments) used as a basis for accepting. If not accepted or if nothing was found, state evidence used as basis for establishing location. If reestablished through lost corner proportionate methods, indicate all monuments, distances and directions used to establish. Indicate type of monument found or set and sign post.

1859 - W DAUGHERTY ESTABLISHED ORIGINAL CORNER

1990 - W.F. KELLY LOCATED 1 1/4" IP IN CENTER OF PRATT JCT RD AND W.C. MON SET BY C.P.C. IN 1980. CORNER LOCATION AGREED UPON BY ADJOINING PROPERTY OWNERS MARKED NEW BEARING TREES - SET NEW WIT. COR.

(c) (d) (e) Plan view of corner with ties to at least 4 witness monuments. If in disagreement with previously established corner, show the distances between the two corners and also indicate the ties to the disputed corner.



(i) I, WILLIAM F. KELLY  
 (type or print name) certify that the corner location on this record was determined by me or under my direction and control and that this U.S. Public Land Survey Monument Record is correct and complete to the best of my knowledge and belief.

William F. Kelly 8-28-80  
 Signature Date



Index No. V-3

Stamp

3511300020