

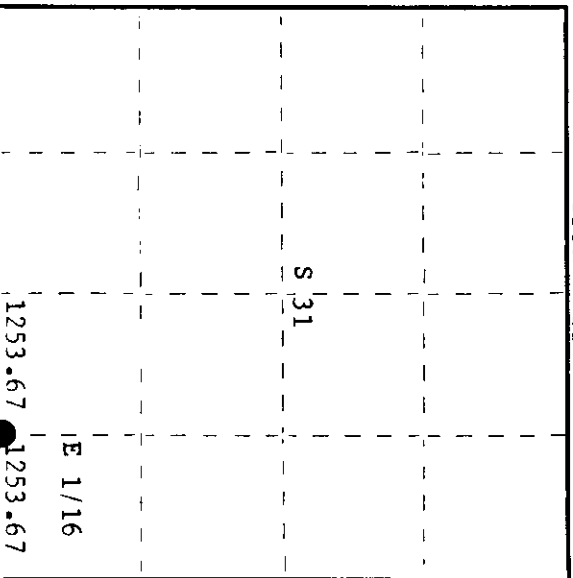
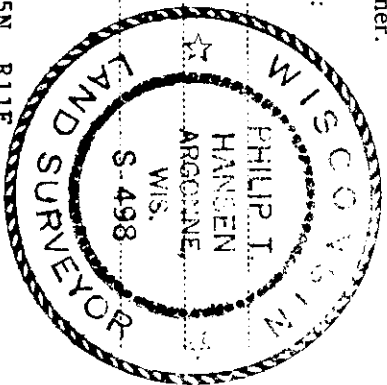
CERTIFIED LAND CORNER RESTORATION

Index No. 24

State of Wisconsin }
County of Oneida } ss.

I, Phillip T. Hansen, do hereby certify that on the 8th day of May, 1980, I ~~restored~~ established the E 1/16 corner of Sections 31 and 6 Township 35-34, North, Range 11 East, Fourth Principal Meridian, as described hereon; and that from this evidence I established a new monument and accessories as described hereon to perpetuate the original location of this corner.

Resident witnesses:
Glen Barker
Jim Claflin
Herb Wagoner



History of original corner establishment:

Description of corner evidence found:
No evidence of any corner recovered.
Corner established by traverse and computations. Ran traverse from section corner 31, 32, 5 and 6 to 1/4 corner between sections 31 and 6. Computed distance is 2507.34' at bearing S 89° 15' 02" W. Set the E 1/16 at 1253.67 feet intermediate.

Description of monument and accessories I established to perpetuate the original location of this corner.
Set a 1-1/2" iron pipe with brass cap for E 1/16 corner.
Monument projects 18" above ground. Cap stamped:

Marked NBT's -
Sugar 6" S48°E 12.85' T35N R11E S498
Sugar 4" N20°W 27.25' E 1/16 S+31
both scribed 1/16 RT. T34N R11E 1980

Dated at Rhineland, Wis., this 30th day of May, 1980

Signature Phillip T. Hansen Title Registered Land Surveyor Registration No. S-498
(County Surveyor, Registered Land Surveyor, or other duly authorized official)

Office of Register of Deeds, County of Oneida, I hereby certify that the within instrument was filed in this office for record on the 5th day of June, 1980 at 1:30 o'clock P. M.

Doree Leverage Kuehn
(Register of Deeds)

By: _____ Deputy

3511310018