

CERTIFIED LAND CORNER RESTORATION

Index No. Y-5

State of Wisconsin }  
 County of Oneida } ss.

History of original corner establishment:  
 No records of any previous survey.

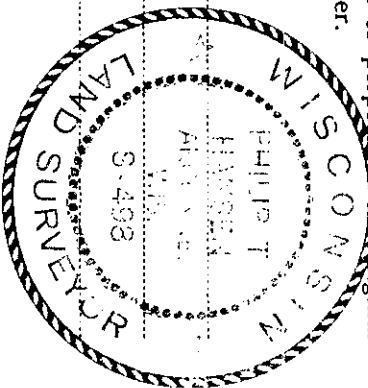
I, Phillip T. Hansen, do hereby certify that on the 27th day of October, 19 78, I found established the S 1/16 ~~section~~ corner of Sections 31 & 32 Township 35, North, Range 11 East, Fourth Principal Meridian, as described hereon; and that from this evidence I established a new monument and accessories as described hereon to perpetuate the original location of this corner.

Description of corner evidence found:

No evidence of any corner recovered.  
 Corner established by traverse and computation. Ran traverse south from recovered 1/4 corner between sections 31 and 32 to section corner 31 and 32, T35N R1E and 5 and 6, T34N R1E. Computed distance 2688.214 feet at bearing S 4° 47' 18" W. Set S 1/16 at 1344.107 feet intermediate.

Resident witnesses:

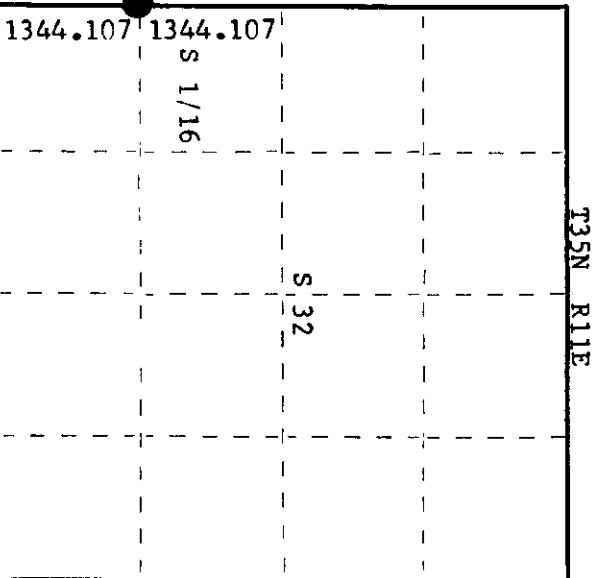
Glen Barker  
Jim Claffin  
Herb Wagoner



Description of monument and accessories I established to perpetuate the original location of this corner.  
 Set 1 1/2" iron pipe with 2" brass cap. Monument projects 18" above ground, cap stamped:

Marked NBT's -  
 Maple 6" S89°W 14.92 feet, scribed 1/16 BT.  
 Maple 8" S6°W 55.58 feet, scribed 1/16 BT.

S498  
 T35N R1E  
 S31 S32  
 S 1/16  
 CPI-1978



○ = Corner monument restored.

Dated at Rhinelander, Wis., this 13th day of November, 19 78

Signature Phillip T. Hansen, Title Registered Land Surveyor Registration No. S-498  
 (County Surveyor, Registered Land Surveyor, or other duly authorized official)

Office of Register of Deeds, County of Oneida  
 Instrument was filed in this office for record on the 27th day of November, 19 78  
 at 1 o'clock P. M.

Lorain Sprague Kuehn  
 (Register of Deeds)

By \_\_\_\_\_ Deputy