

CERTIFIED LAND CORNER RESTORATION

Index No. **W-12**

State of Wisconsin

County of Oneida } ss.

I Phillip T. Hansen, do hereby certify that on the 11th day of September, 1978, I ~~found~~ **established** ~~restored~~ the NE 1/16 corner of section 33

Township 35, North, Range 11 East, Fourth Principal Meridian,

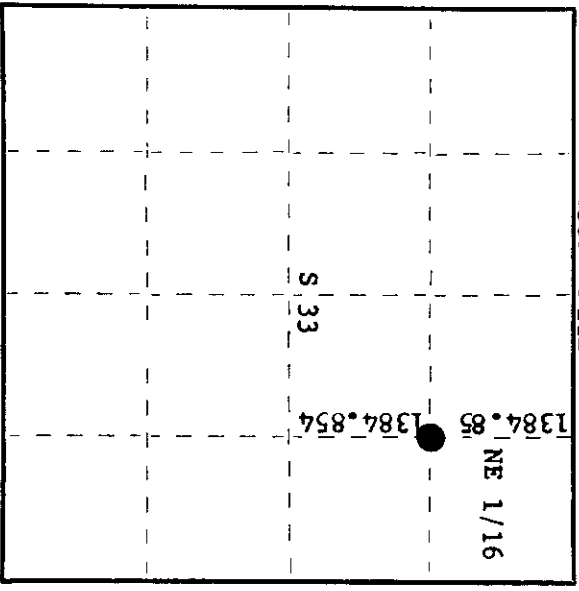
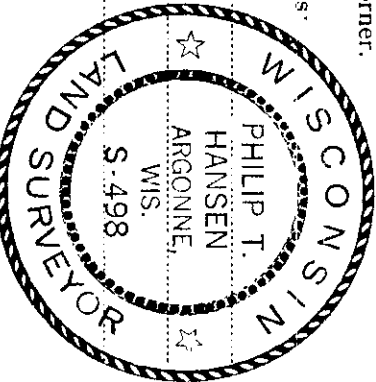
as described hereon; and that from this evidence I established a new monument and accessories as described hereon to perpetuate the original location of this corner.

Resident witnesses:

Glen Barker

Jim Clafflin

Herb Wagoner



○ = Corner monument restored.

History of original corner establishment:

No record of any previous survey.

Description of corner evidence found:

No evidence of any corner recovered. Corner established by traverse and computation. Computed distance from E 1/16 between sections 28 and 33 to EC 1/16 is 2649.70+ feet at bearing S 1° 59' 03" W. Set NE 1/16 at 1384.85' south of E 1/16 and 1384.85' north of EC 1/16.

Description of monument and accessories I established to perpetuate the original location of this corner.

Set 1 1/2" iron pipe with 2" brass cap, stamped: Monument projects 30" above ground. Marked NBT's - Maple 7" S63°E, 17.75' S498 T35N R11E W. Spruce 7" N36°E, 24.93', scribed 1/16 BT NE 1/16 S 33

CPI-1978

Dated at Rhineland, Wis., this 18th day of September, 1978.

Signature Phillip T. Hansen Title Registered Land Surveyor Registration No. S-498
(County Surveyor, Registered Land Surveyor, or other duly authorized official)

Office of Register of Deeds, County of Oneida I hereby certify that the within instrument was filed in this office for record on the 25th day of September, 1978 at 9:50 o'clock P. M.

Doree Verage Fuchs
(Register of Deeds)

By _____ Deputy

3511333010