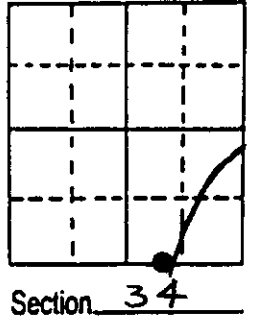
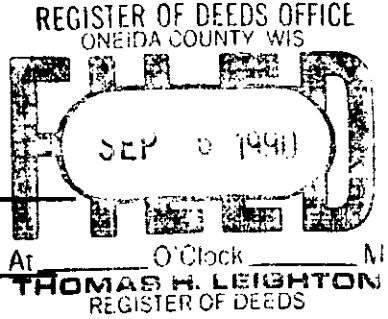


U.S. PUBLIC LAND SURVEY MONUMENT RECORD

Note: This form is intended and designed to fulfill all requirements of Wisconsin Administrative Code, Chapter A-E 7.08 U.S. Public Land Survey Monument Record (3) (a) (b) (c) (d) (e) (f) (g) (h) (i). An additional sheet may be added if necessary to conform with said requirements.

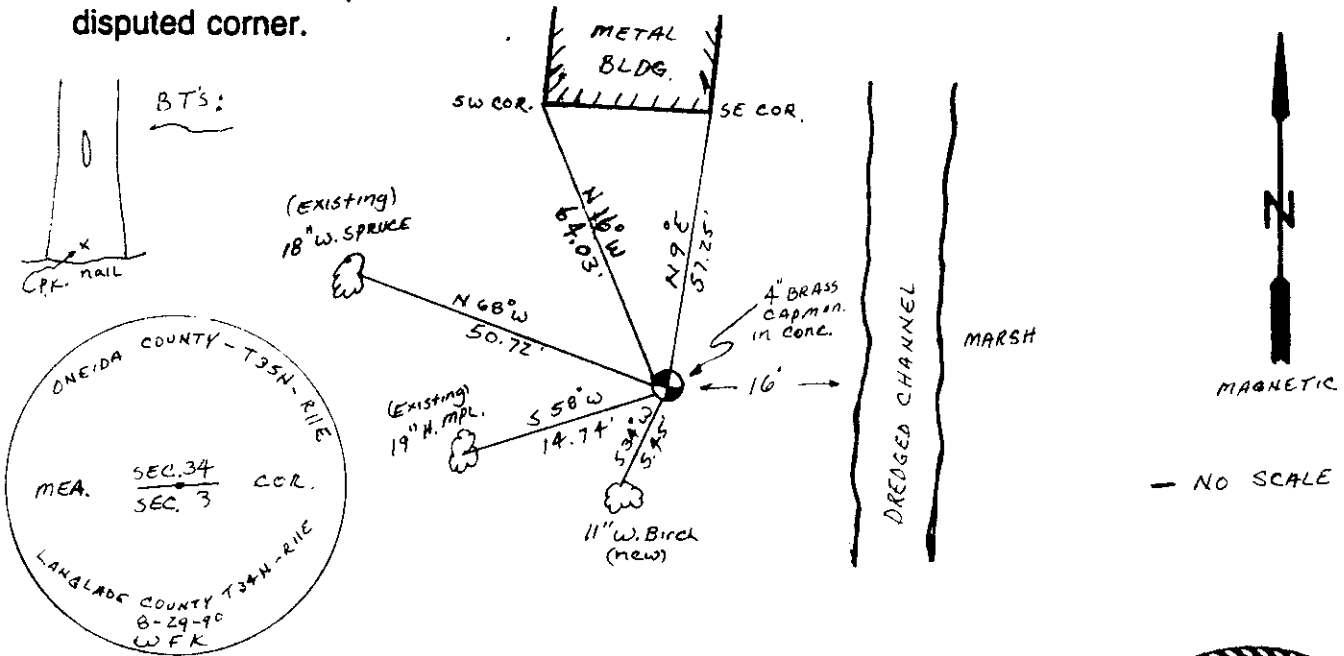
(a) Corner location: Township 35 North
 Range 11 East/West
 Town/City/Village SCHOEPKE
 County ONEIDA



(b) (f) (g) (h) Description of monument found at this corner and if it was accepted, state all evidence (material, testimonial, occupational, plats, records, other monuments) used as a basis for accepting. If not accepted or if nothing was found, state evidence used as basis for establishing location. If reestablished through lost corner proportionate methods, indicate all monuments, distances and directions used to establish. Indicate type of monument found or set and sign post.

1859 - H.C. FELLOWS ESTABLISHED ORIGINAL M.C.
 1967 - ROBERT J. POSS FOUND 2" IRON PIPE & SQ'D STAKE 15" BELOW GROUND SET 1 1/2" IRON PIPE WITH 4" BRASS CAP IN 6" D x 42" CONCRETE & 5 B.T'S.
 1990 - FOUND 1 1/2" IRON PIPE WITH BRASS CAP IN CONCRETE & ALL 5 B.T'S.

(c) (d) (e) Plan view of corner with ties to at least 4 witness monuments. If in disagreement with previously established corner, show the distances between the two corners and also indicate the ties to the disputed corner.



(i) I, WILLIAM F. KELLY
 (type or print name) certify that the corner location on this record was determined by me or under my direction and control and that this U.S. Public Land Survey Monument Record is correct and complete to the best of my knowledge and belief.

William F. Kelly Signature 8-28-90 Date



Stamp
 3511340012

Index No. 7-15, 16