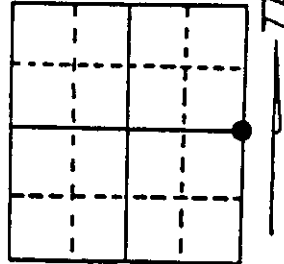
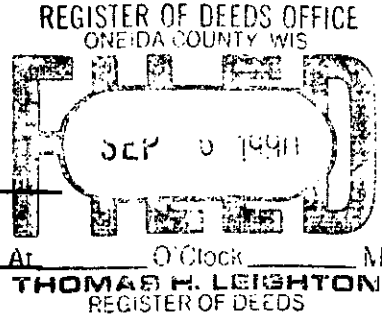


# U.S. PUBLIC LAND SURVEY MONUMENT RECORD

Note: This form is intended and designed to fulfill all requirements of Wisconsin Administrative Code, Chapter A-E 7.08 U.S. Public Land Survey Monument Record (3) (a) (b) (c) (d) (e) (f) (g) (h) (i). An additional sheet may be added if necessary to conform with said requirements.

(a) Corner location: Township 35 North  
 Range 11 East/West  
 Town/City/Village SCHOEPEKE  
 County ONEIDA



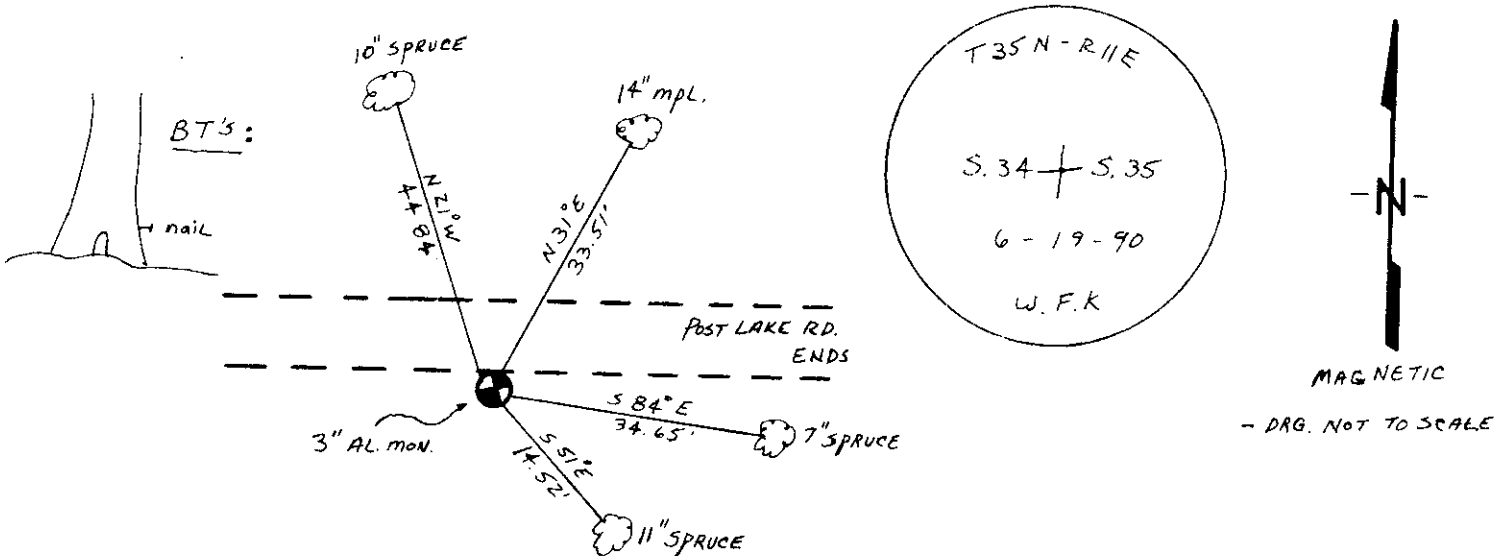
Section 34

(b) (f) (g) (h) Description of monument found at this corner and if it was accepted, state all evidence (material, testimonial, occupational, plats, records, other monuments) used as a basis for accepting. If not accepted or if nothing was found, state evidence used as basis for establishing location. If reestablished through lost corner proportionate methods, indicate all monuments, distances and directions used to establish. Indicate type of monument found or set and sign post.

*1859, W. DAUGHERTY ESTABLISHED ORIGINAL CORNER*

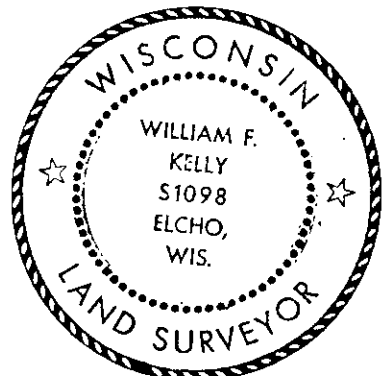
*JUNE, 1990, W. F. KELLY FOUND 1 1/4" IRON PIPE AT SOUTH EDGE OF BLACK TOP ROAD. SET 3" AL. MONUMENT. PIPE IDENTIFIED IN 1975 AS 114602 BY FORMER RESIDENT (D. GUPTIL)*

(c) (d) (e) Plan view of corner with ties to at least 4 witness monuments. If in disagreement with previously established corner, show the distances between the two corners and also indicate the ties to the disputed corner.



(i) I, WILLIAM F. KELLY  
 (type or print name) certify that the corner location on this record was determined by me or under my direction and control and that this U.S. Public Land Survey Monument Record is correct and complete to the best of my knowledge and belief.

William F. Kelly 8-28-90  
 Signature Date



Stamp

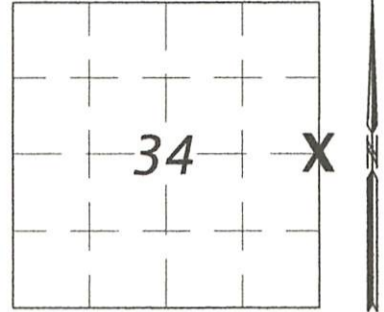
3511342000

Index No. X-17

**U.S. PUBLIC LAND SURVEY MONUMENT RECORD**

NOTE: This form is intended and designed to fulfill all requirements of Wisconsin Administrative Code, Chapter A-E 7.08 U.S. Public Land Survey Monument Record (3)(a)(b)(c)(d)(e)(f)(h)(i). An additional sheet may be added if necessary to conform with said requirements.

SECTION 34  
 TOWNSHIP 35 NORTH  
 RANGE 11 EAST  
 TOWN OF SCHOEPKE  
 CORNER ID # 3511342000



(a) CORNER LOCATION AND MONUMENT: Aluminum Monument found at the 1/4 Corner between Sections 34 and 35  
 COUNTY COORDINATE: N 105185.55 E 347014.72 usf  
 WISCRS (Oneida County) Datum: NAD83 (2011)  
 DATE OF SURVEY: 1/13/20  
 SURVEY PARTY: T Sommer

**BASIS FOR MONUMENT LOCATION:**

(b)(f)(g)(h) This is a perpetuation of a previous USPLS Monument Record by William F. Kelly, RLS dated 8-28-90 and filed in the office of the Oneida County Register of Deeds. A complete history of the corner can be found on the previous monument record. I accept the previous location as a true and faithful perpetuation or reestablishment of the original corner location and further perpetuate it as follows:

5/29/2018 - I, Ted Sommer, found the aluminum monument at the corner location at the south edge of paved turn around at the end of McGuire Road (previously shown as Post Lake Road), 3" below ground. Kelly's bearing trees are all gone. I made new BT's and accessories as shown below.

The coordinates shown were derived from averaged direct RTN GPS observations at markedly different times and comparison to a previously GPS determined published value.



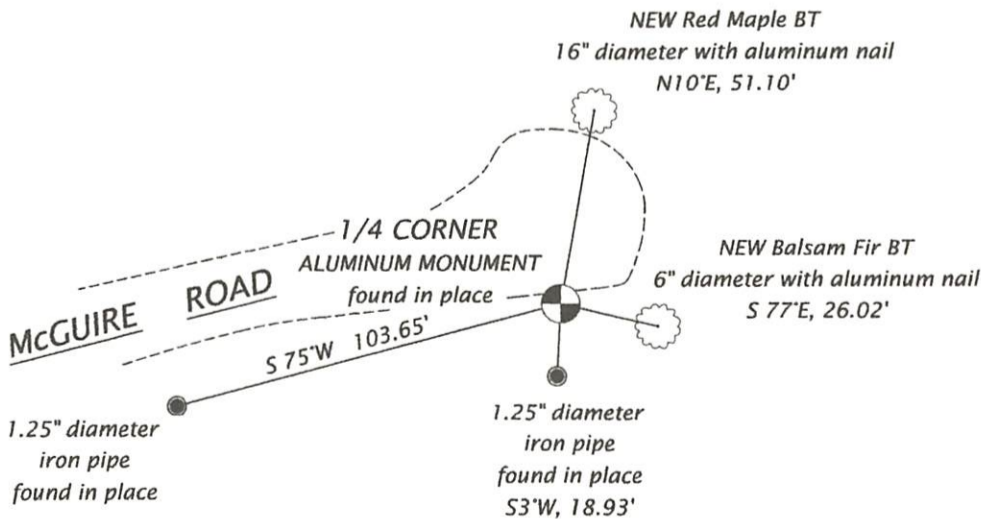
(i) I, Theodore G. Sommer, Professional Land Surveyor No. S-2964 hereby certify that the corner location on this record was determined by me or under my direction and control, and that this U.S. Public Land Survey Monument Record is correct and complete to the best of my knowledge and belief.

Theodore G. Sommer - PLS 2964  
 Dated 1/24/2020

**TIE SKETCH:** (c)(d)(e) Show minimum of four horizontal tie distances to fixed witness monuments. Describe all monuments found or set.

SKETCH NOT TO SCALE  
 MONUMENT DIMENSIONS  
 ARE OUTSIDE DIAMETER

NOTE: Kelly's BT's all gone



BEARINGS MAGNETIC



REGISTER OF DEEDS OFFICE  
 ONEIDA COUNTY  
 FILED

APR 21 2022

KYLE J. FRANSON  
 REGISTER OF DEEDS

FEB 08 2023

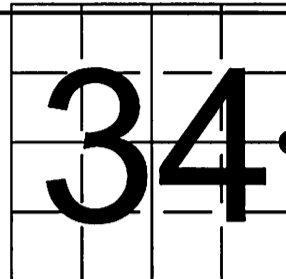
KYLE J. FRANSON  
REGISTER OF DEEDS

**U S PUBLIC LAND SURVEY MONUMENT RECORD - ADDENDUM**

NOTE: This form is intended and designed to fulfill all requirements of Wisconsin Administrative Code, Chapter A-E 7.08 U.S. Public Land Survey Monument Record (3) (a-i)

A-E 7.08(3)(a) Identity of corner  
EAST 1/4 CORNER OF SECTION 34  
TOWNSHIP 35 NORTH  
RANGE 11 EAST OF THE 4TH PM  
TOWN OF SCHOEPKE,  
COUNTY OF ONEIDA

WISCRS - ONEIDA COUNTY  
N: 105,185.439 USft (105,185.464)  
E: 347,014.700 USft (347,014.616)  
Datum: NAD83 (2011)  
GNSS Method RTN - Direct  
GNSS Control WISCORS VRS



The coordinate value shown has been verified by the average of two or more GPS observations at a markedly different time. Values shown in parenthesis, are previously published measurements.

A-E 7.08(3)(b) Description of any record evidence, monument evidence, occupational evidence, testimonial evidence, or any other material evidence.

Original Surveyor: William E Daugherty

Date of Original Survey	Commenced:	July 25, 1859	Original Accessories:			
	Completed:	July 29, 1859	Hemlock	11	S 76° W	14
			Hemlock	10	N 81° E	13

See Previous Monument Record: Index No. X-17 - June 19, 1990 - Surveyor 1098 - William F. Kelly - Thence:

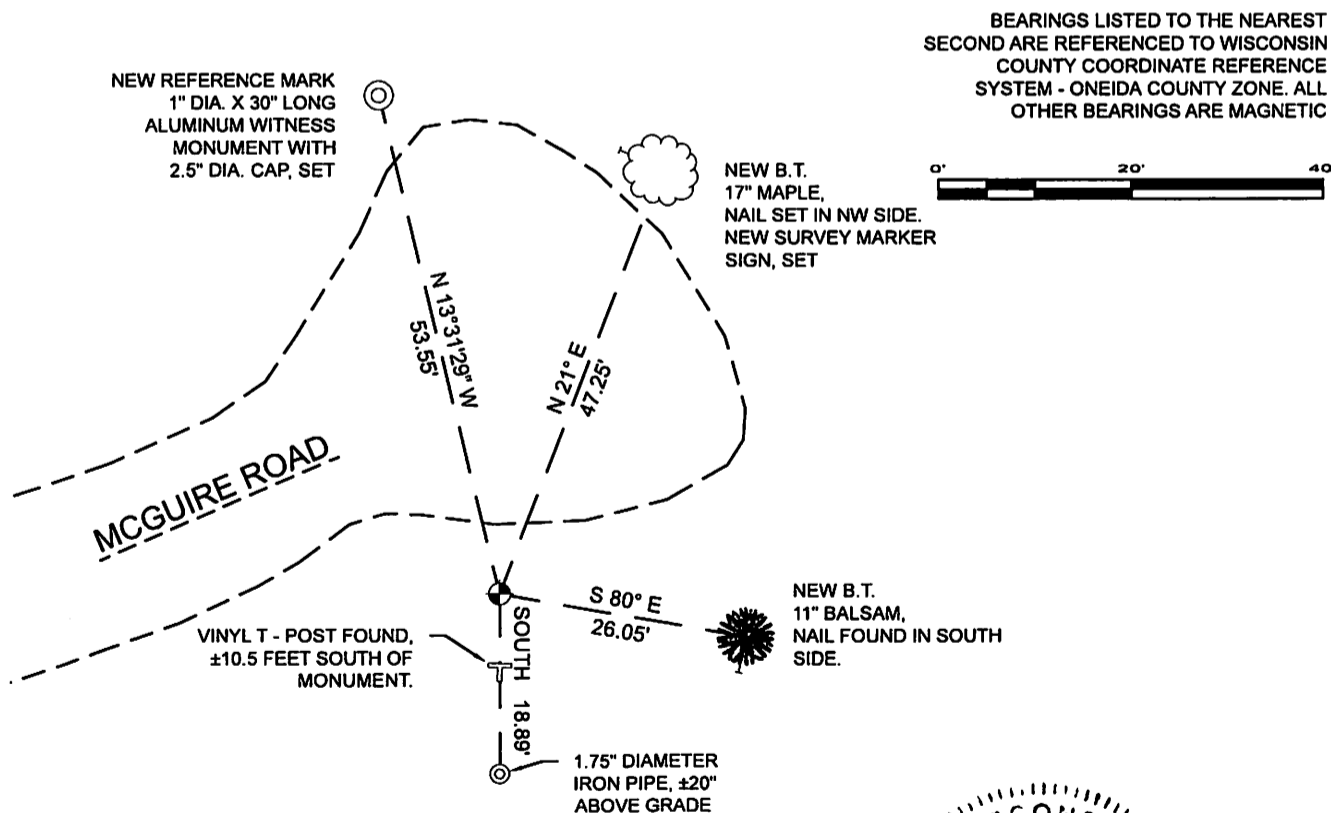
January 7, 1997 - Surveyor 887 - Thomas R. Arnott - indicates this position as "Alu. mon fd." on O.C.S. Map C1316.  
July 21, 1998 - Surveyor 1795 - Devon Vanden Heuvel - indicates this position as "West 1/4 Corner Section 35" on CSM Vol. 8 Pg. 2096.  
October 16, 2000 - Surveyor 1795 - Devon Vanden Heuvel - indicates this position as "Existing Capped Aluminum Monument" on CSM, Vol. 10 Pg. 2439.  
April 8, 2003 - Surveyor 1451 - Eugene C. Uttech - indicates this position as "Ex. County Monument" on CSM Vol. 12 Pg. 2845.  
July 11, 2008 - Surveyor 1731 - Kip W. Soder - indicates this position as "Oneida County aluminum capped monument" on O.C.S. Map B7509.

July 25, 2022 - At the request of Oneida County Land Information, I found: a 3.25" diameter Oneida County aluminum monument stamped to identify corner position, near the south edge of McGuire Road.

I did not find any of Kelly's B.T.'s as established and noted on Certified Land Corner Restoration X - 17.

A-E 7.08(3)(f) I accept this monument as a FOUND PERPETUATED LOCATION OF THE CORNER and established 4 new witnesses as shown below.

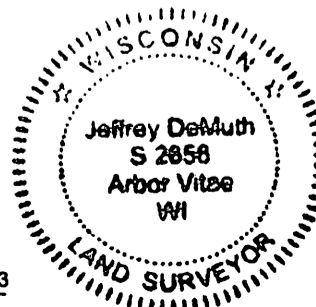
A-E 7.08(3)(c)(d)(e)(h) Plan view of corner with references to at least 4 witness monuments. If in disagreement with previously established corner, show the distances between the two corners and also indicate the ties to the disputed. The directions and distances to other public land survey corners used as evidence or used for determining the corner location.



A-E 7.08(3)(i) I, Jeffrey L. DeMuth, Professional Land Surveyor No. S-2656, hereby certify that the corner location on this record was determined by me or under my direction and control and that this U.S. Public Land Survey Monument Record is correct and complete to the best of my knowledge, and belief

*Handwritten signature of Jeffrey L. DeMuth*

January 17, 2023  
DATE



SIGNATURE

X-17  
43511342000