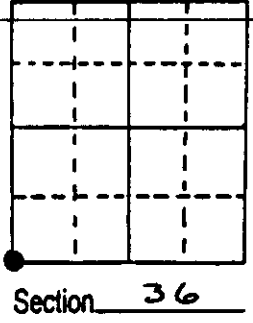


# U.S. PUBLIC LAND SURVEY MONUMENT RECORD

Note: This form is intended and designed to fulfill all requirements of Wisconsin Administrative Code, Chapter A-E 7.08 U.S. Public Land Survey Monument Record (3) (a) (b) (c) (d) (e) (f) (g) (h) (i). An additional sheet may be added if necessary to conform with said requirements.

(a) Corner location: Township 35 North  
 Range 11 East/West  
 Town/City/Village SCHOEPKE  
 County ONEIDA



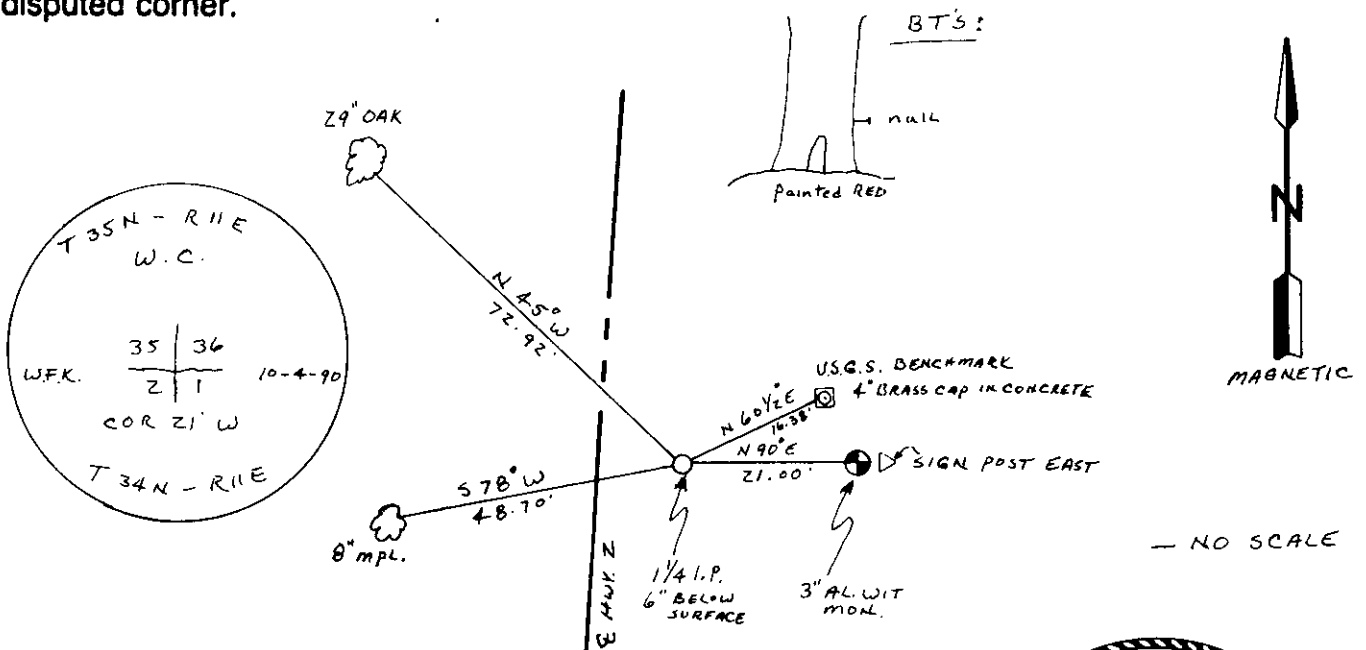
(b) (f) (g) (h) Description of monument found at this corner and if it was accepted, state all evidence (material, testimonial, occupational, plats, records, other monuments) used as a basis for accepting. If not accepted or if nothing was found, state evidence used as basis for establishing location. If reestablished through lost corner proportionate methods, indicate all monuments, distances and directions used to establish. Indicate type of monument found or set and sign post.

1857 - ALFRED MILLARD ESTABLISHED ORIGINAL CORNER; BT'S: 16" R. OAK, N5°W, 87 LKS.  
 10" Spruce, N63°E, 20 LKS  
 8" Spruce, S16°E, 178 LKS.  
 8" ASPEN, S23°W, 122 LKS.

1990 - I FOUND NO EVIDENCE OF CORNER OR BEARING TREES.  
 SET CORNER BY SINGLE PROPORTION. CORNER LANDS IN GRAVEL ON EAST EDGE COUNTY HWY. Z, I SET A 1 1/4" IRON PIPE 6" BELOW SURFACE & A 3" AL. WITNESS MONUMENT EAST 21.00 FEET

\* SEE OPPOSITE SIDE FOR DIRECTION & DISTANCES USED FOR PROPORTIONING BETWEEN FOUND CORNERS.

(c) (d) (e) Plan view of corner with ties to at least 4 witness monuments. If in disagreement with previously established corner, show the distances between the two corners and also indicate the ties to the disputed corner.



(i) I, WILLIAM F. KELLY  
 (type or print name) certify that the corner location on this record was determined by me or under my direction and control and that this U.S. Public Land Survey Monument Record is correct and complete to the best of my knowledge and belief.

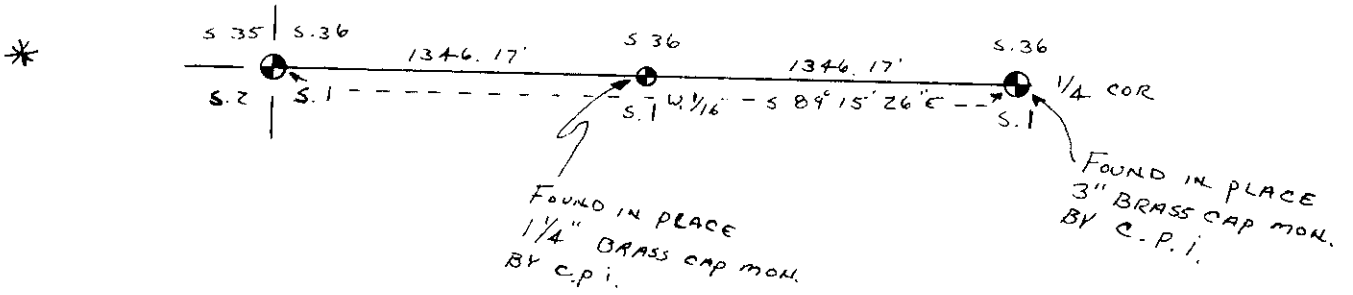
William F. Kelly Signature      10-30-90 Date



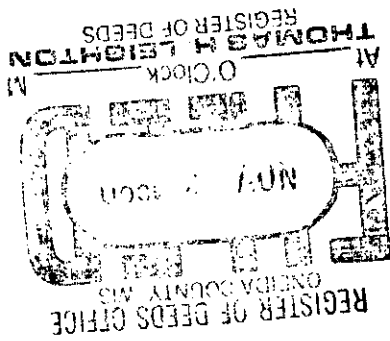
Stamp  
 3511350000

Index No. N-21

T 35 N - R 11 E



T 34 N - R 11 E



FEB 08 2023

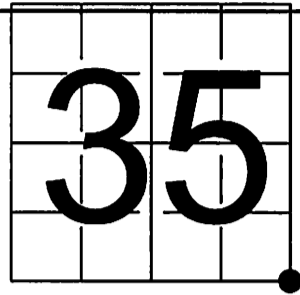
KYLE J. FRANSON  
REGISTER OF DEEDS

# U S PUBLIC LAND SURVEY MONUMENT RECORD - ADDENDUM

NOTE: This form is intended and designed to fulfill all requirements of Wisconsin Administrative Code, Chapter A-E 7.08 U.S. Public Land Survey Monument Record (3) (a-i)

A-E 7.08(3)(a) Identity of corner  
SOUTHEAST CORNER OF SECTION 35  
TOWNSHIP 35 NORTH  
RANGE 11 EAST OF THE 4TH PM  
TOWN OF SCHOEPKE,  
COUNTY OF ONEIDA

WISCRS - ONEIDA COUNTY  
N: 102,249.962 USft (102,250.007)  
E: 352,351.524 USft (352,351.645)  
Datum: NAD83 (2011)  
GNSS Method RTN - Direct  
GNSS Control WISCORS VRS



The coordinate value shown has been verified by the average of two or more GPS observations at a markedly different time. Values shown in parenthesis, are previously published measurements.

A-E 7.08(3)(b) Description of any record evidence, monument evidence, occupational evidence, testimonial evidence, or any other material evidence.

Original Surveyor: Hiram C. Fellows  
(Note: Previous U.S. Public Land Survey Monument Record refers to Alfred Millard as Original Surveyor)

Date of Original Survey	Commenced:	June, 1859	Original Accessories:		
	Completed:	July, 1859	Red Oak	16	N 25° W 87 Links
			Spruce	10	N 63° E 20 Links
			Spruce	8	S 16° E 178 Links
			Aspen	8	S 23° W 122 Links

See Previous Monument Record: Index No. Z-21 - October 4, 1990 - Surveyor 1098 - William F. Kelly - Thence:

April 27, 2000 - Surveyor 1795 - Devon Vanden Heuvel - indicates this position as "Nail set from ties" on Langlade Co. Map #40335.  
September 12, 2008 - Surveyor 2671 - Timothy J. Rusch - indicates this position as "Calculated from ties" on Langlade Co. Map #20375.

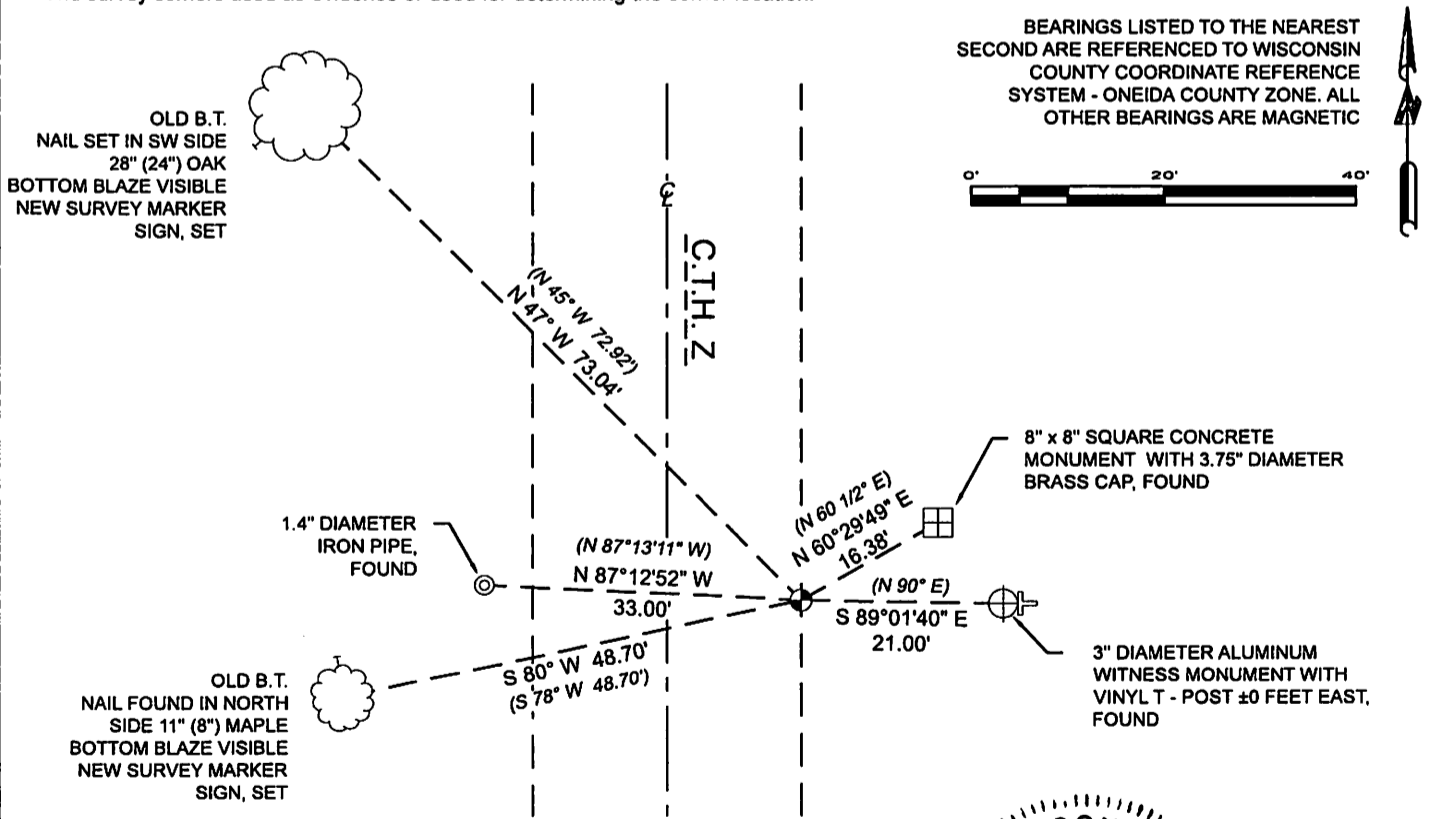
April 28, 2022 - In preparation of a road reconstruction project, I found: Both of Kelly's bearing trees, his aluminum witness monument and the U.S.G.S. brass cap in 8" X 8" concrete monument as shown on previous U.S. Public Land Survey Monument Record Z-21.

I did not find Kelly's 1 1/4" iron pipe, or Vanden Heuvel's nail.

A-E 7.08(3)(f) I restored this corner through ACCEPTANCE OF AN OBLITERATED LOCATION.

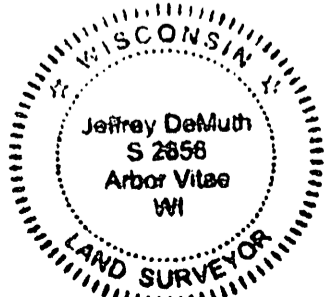
August 22, 2022 - After completion of the road reconstruction project, I set a 30" long aluminum pipe (drivable) with a 2.5" diameter Oneida County aluminum cap from existing witnesses, and established 1 new witness as shown below. Monument is in the west shoulder of County Trunk Highway Z and ±12" below grade.

A-E 7.08(3)(c)(d)(e)(h) Plan view of corner with references to at least 4 witness monuments. If in disagreement with previously established corner, show the distances between the two corners and also indicate the ties to the disputed. The directions and distances to other public land survey corners used as evidence or used for determining the corner location.



A-E 7.08(3)(i) I, Jeffrey L. DeMuth, Professional Land Surveyor No. S-2656, hereby certify that the corner location on this record was determined by me or under my direction and control and that this U.S. Public Land Survey Monument Record is correct and complete to the best of my knowledge, and belief

*Jeffrey L. DeMuth*  
January 17, 2023  
DATE



2-21  
43511350000