

U. S. PUBLIC LAND SURVEY MONUMENT RECORD

INSTRUCTIONS:

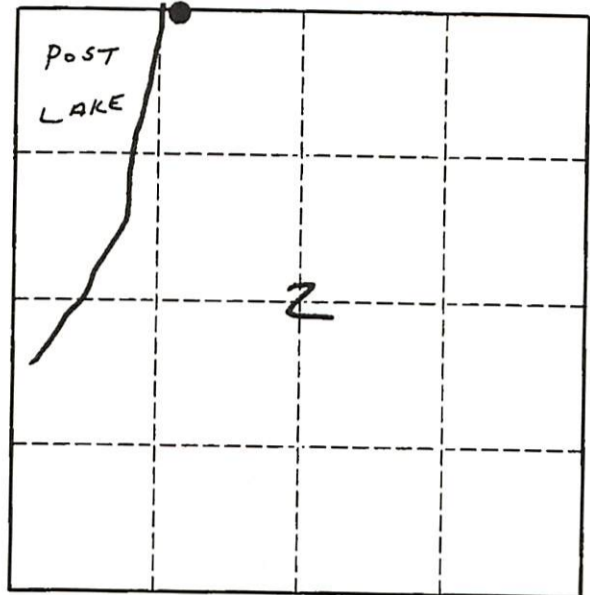
This record shall show the location of the corner and shall include all of the following nine elements (a through i).

- (a) Identify the corner by reference to the U.S. public land survey system.
 O = Corner monument restored.

1857 - H.C. FELLOWS EST. ORIG. M.C.
 1964 - G. ZIRNHILT USED CORNER TO SURVEY GOV. LOT 3

COPY

FROM LANGLAISE COUNTY



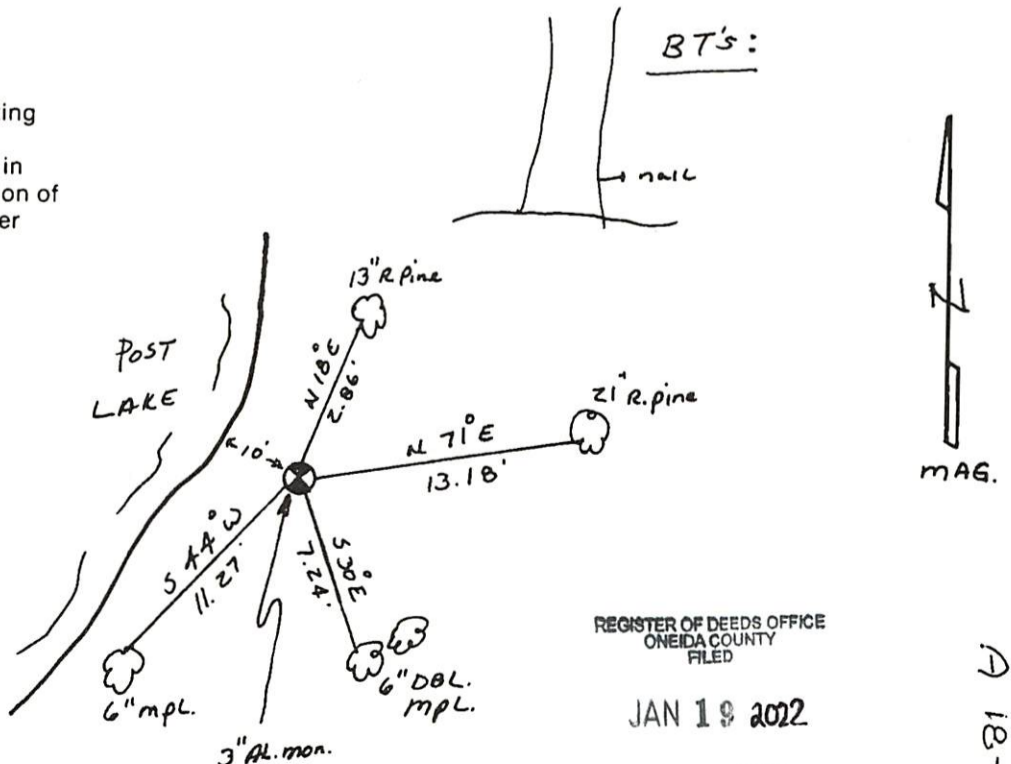
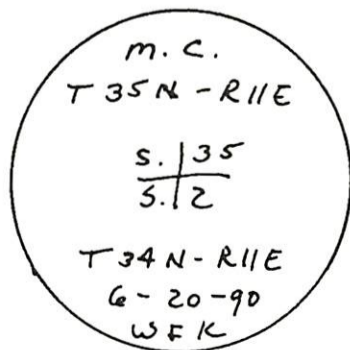
T 34 N - R 11 E

- (b) Describe any record evidence, monument evidence, occupational evidence, testimonial evidence or any other material evidence you considered, and whether the monument was found or placed.

I FOUND 1/2" IRON PIPE. I TALKED TO OLD RESIDENTS ABOUT THE ACCURACY OF IRON PIPE. THEY SAID IT WAS IN THE CORRECT LOCATION. I SET A 3" AL. MONUMENT OVER THE I.P. & SET A WHITE WITNESS POST NEXT TO CAP.

- (c) In the plan view drawing below, provide reference ties to at least 4 witness monuments, or, if the location is within a municipality, to at least 2 witness monuments. (Witness monuments shall be made of concrete, natural stone, iron or other equally durable material.) Describe witness monuments.

- (d) Show a plan view drawing depicting the relevant monuments and reference ties which is sufficient in detail to enable accurate relocation of the corner monument if the corner monument is disturbed. Indicate north.



REGISTER OF DEEDS OFFICE
 ONEIDA COUNTY
 FILED

JAN 19 2022

KYLE J. FRANSON
 REGISTER OF DEEDS

3511350028

Describe any material discrepancy between the location of the corner as restored or reestablished and the location of that corner as previously restored or reestablished by distance and direction. Show the discrepancy on the plan view drawing under (d), above. Show the distances between the corner as previously restored or reestablished and (1) the corner as restored or reestablished, and (2) to at least 2 of the witness monuments shown on the drawing in (d), above.

NONE

(f) Was the corner restored through acceptance of (1) an obliterated evidence location, or, (2) a found perpetuated location?

FOUND. PERPETUATED LOCATION

(g & h) Was the corner reestablished through lost corner proportionate methods? If so, show the method, including the directions and distances to other public land survey corners used as evidence or used for proportioning in determining the corner location. NO

(i) I, WILLIAM F. KELLY
(type or print name)

certify that the corner location shown on this record was determined by me or under my direction and control and that this U.S. Public Land Survey Monument Record is correct and complete to the best of my knowledge and belief.



William F. Kelly 8-28-90
Signature Date

3511350028

LANGLADE COUNTY U.S. PUBLIC LAND CORNER RESTORATION

The Meander corner, South line Sec 35, T. 35 N., R. 11 E., Oneida County, WI.

Corner was: (check all that apply)

- Restored through acceptance of an obliterated evidence location.
- Restored through acceptance of a found perpetuated location.
- Determined to be lost and re-established through proportionate methods.
(Show bearings and distances to PLSS corners used for proportioning, and show original distances).
- Restored/recovered/re-established in a location that differs from a previously established position.
(Show difference in plan view below).
- Check here if additional information is shown on the reverse side of this form.

4351135 0028

REGISTER OF DEEDS OFFICE
ONEIDA COUNTY
FILED

JAN 19 2022

KYLE J. FRANSON
REGISTER OF DEEDS

Describe record evidence, recovered physical evidence, occupational evidence, testimonial evidence and all other evidence considered in the recovery/restoration of the corner.

The original corner was established in 1859 by Deputy Surveyor Hiram Fellows. Original bearing trees: ash, 10", S72E, 13 links and an aspen, 10", N34E, 11 links. In FB122-89, Malcolm Hutchinson didn't describe the corner but called for a birch, 8", S62-1/2E, 21 1/4 ft. Hutchinson surveyed the Rick and Block Park plat to the South. Former surveyor W. F. Kelly, on his 1990 tie sheet, said "I found 1 1/2" iron pipe. I talked to old residents about the accuracy of the iron pipe. They said it was in the correct location. I set a 3" aluminum monument over the I.P. and set a white witness post next to cap". Kelly also set nails in 2 red pines and two maples. Kelly noted that this corner was used in a survey for G. Zirnheit for survey in Govt. Lot 3 in Section 35. I don't have a copy of that survey. Shortly after the July 2019 windstorm, the adjoining neighbor to the south, called to report that the monument is in the root-ball of a windblown red pine (a Kelly BT) only 3 feet from the corner. The pine was removed shortly after the storm. Sept 2020, the windblown pine - now stump - appears to have settled back in place. From it and two other Kelly BT's, I set a temporary monument and tied that location to monuments on 4 Oneida County surveys (A15, B4186, A3245 and CSM 002228) and undocumented survey pipes as shown on page 2 herein. After reviewing my data on the locations of pipe found, I accept the previous location preserved by Kelly as the best evidence of the corner. I replaced my temporary monument with a 2" x 30" flanged bottom galvanized iron pipe set flush, and added reference ties as shown below.

Physical description of the monument set:

I set a new 2" x 30", flanged bottom, galvanized iron pipe with 3/4" brass cap flush to the ground.
Set a 6' white vinyl sign post 0.5' north of the corner monument.

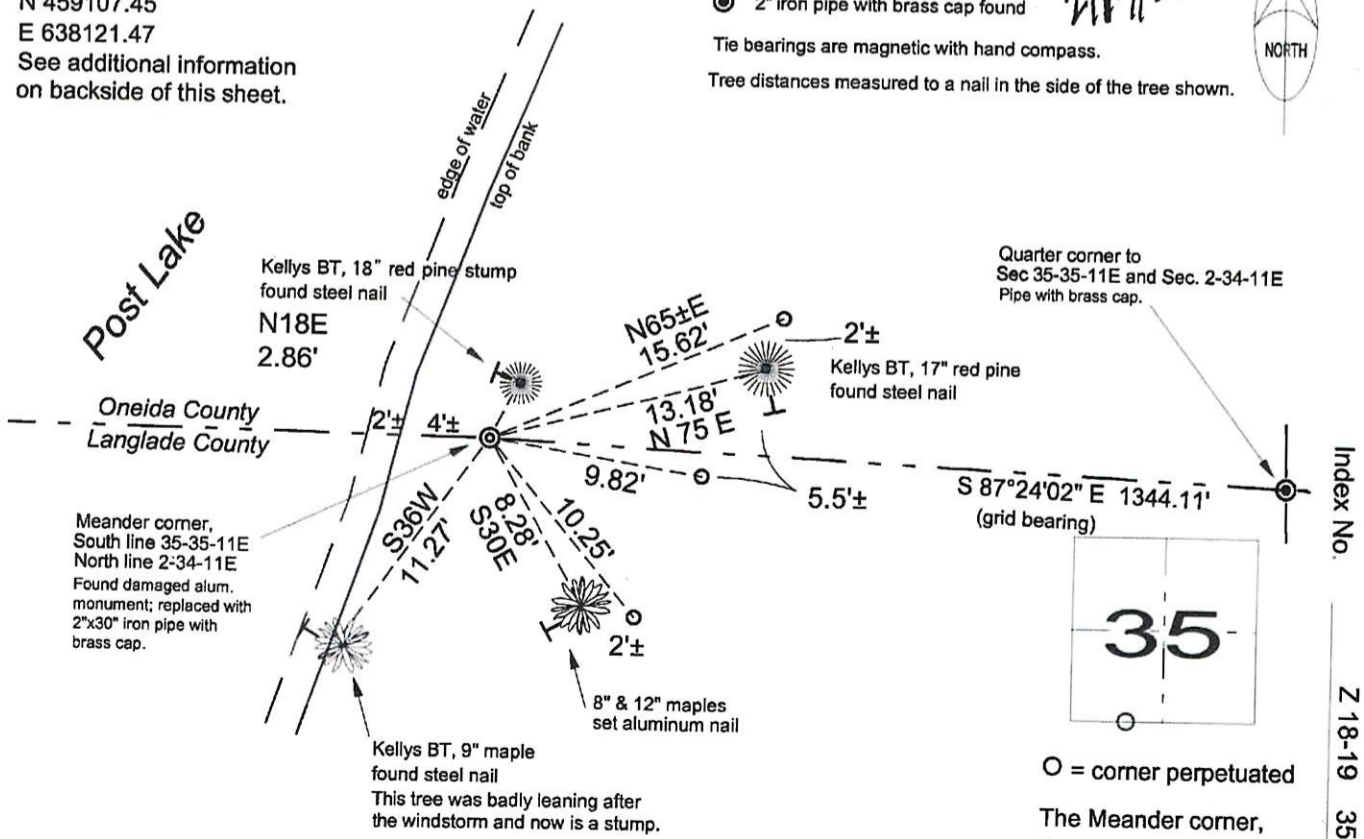
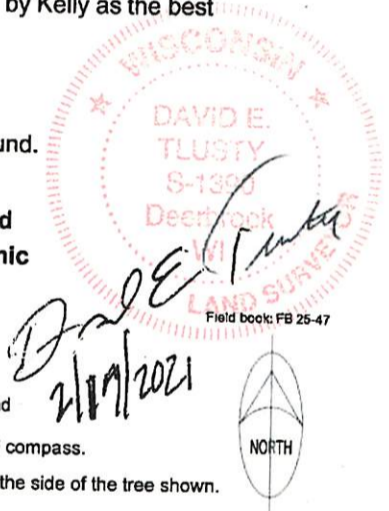
Describe the accessories used to perpetuate the corner. Include a plan view drawing and accessories found/set. Describe measuring point on bearing trees. Show any topographic features that would aid in future recovery of the corner.

Langlade County coordinates on MC
NAD83(2011)
N 459107.45
E 638121.47
See additional information
on backside of this sheet.

LEGEND

- ⊙ 2" iron pipe with brass cap set
- 3/4" x 30" rebar set
- ⊙ 2" iron pipe with brass cap found

Tie bearings are magnetic with hand compass.
Tree distances measured to a nail in the side of the tree shown.



I, David E. Tlusty, Registered Land Surveyor, as Langlade County Surveyor, certify that the corner location on this record was determined by me and that this U.S. Public Land Survey Monument Record is correct to the best of my knowledge and belief.

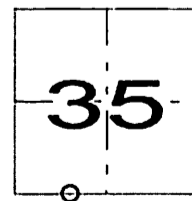
○ = corner perpetuated
The Meander corner,
South line of Section 35,
T. 35 N., R. 11 E.,
Oneida County, WI
3511350028

**LANGLADE COUNTY
U.S. PUBLIC LAND CORNER RESTORATION**

The Meander corner, South line Sec 35, T. 35 N., R. 11 E., Oneida County, WI.

4351135 0028

Station and offsets to iron markers found			
Sta 0+00 = MC = Lang Co Coords NAD83(2011) 459107.45 638121.47			
Ref line bearing (Lang. Co. grid) from MC to Quarter corner to East = S 87°24'02" E			
All offsets are at right angles to the reference line.			
All pipe sizes shown are standard inside dimensions.			
Mon	Sta	offset	comment/origin
2" ip w/br. Cap	0+00.00	0	MC
1 1/4" rebar	0+38.43	50.06' N	cor CSM 002228
1 1/4" rebar	0+76.72	99.96' N	cor CSM 002228
3/4" iron pipe	0+73.03	0.05' S	unknown
1" iron pipe	0+93.53	0.04' N	unknown
1" iron pipe	1+54.68	0.44' S	unknown
3/4" iron pipe	1+80.53	0.10' N	unknown
1-1/4" iron pipe	1+99.04	0.54' N	unknown
3/4" iron pipe	1+99.15	0.44' N	unknown
1" iron pipe	2+99.84	0.27' N	CSM 002228
1 1/4" rebar	3+03.58	50.11' N	cor CSM 002228
1 1/4" rebar	3+06.87	100.00' N	cor CSM 002228
3/4" iron pipe	5+19.03	0.10' N	map A3245
1/2" iron pipe	2+87.28	80.91' S	unknown
2" iron pipe	1+78.99	80.63' S	unknown



O = corner perpetuated

The Meander corner,
South line of Section 35,
T. 35 N., R. 11 E.,
Oneida County, WI

3511 3500 28

Index No.

Z 18-19 35-11