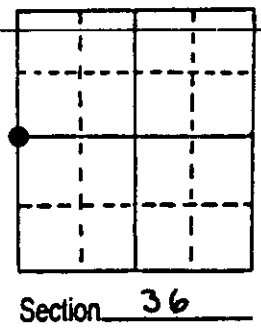


U.S. PUBLIC LAND SURVEY MONUMENT RECORD

Note: This form is intended and designed to fulfill all requirements of Wisconsin Administrative Code, Chapter A-E 7.08 U.S. Public Land Survey Monument Record (3) (a) (b) (c) (d) (e) (f) (g) (h) (i). An additional sheet may be added if necessary to conform with said requirements.

(a) Corner location: Township 35 North
 Range 11 East/West
 Town/City/Village SCHOEPKE
 County ONEIDA



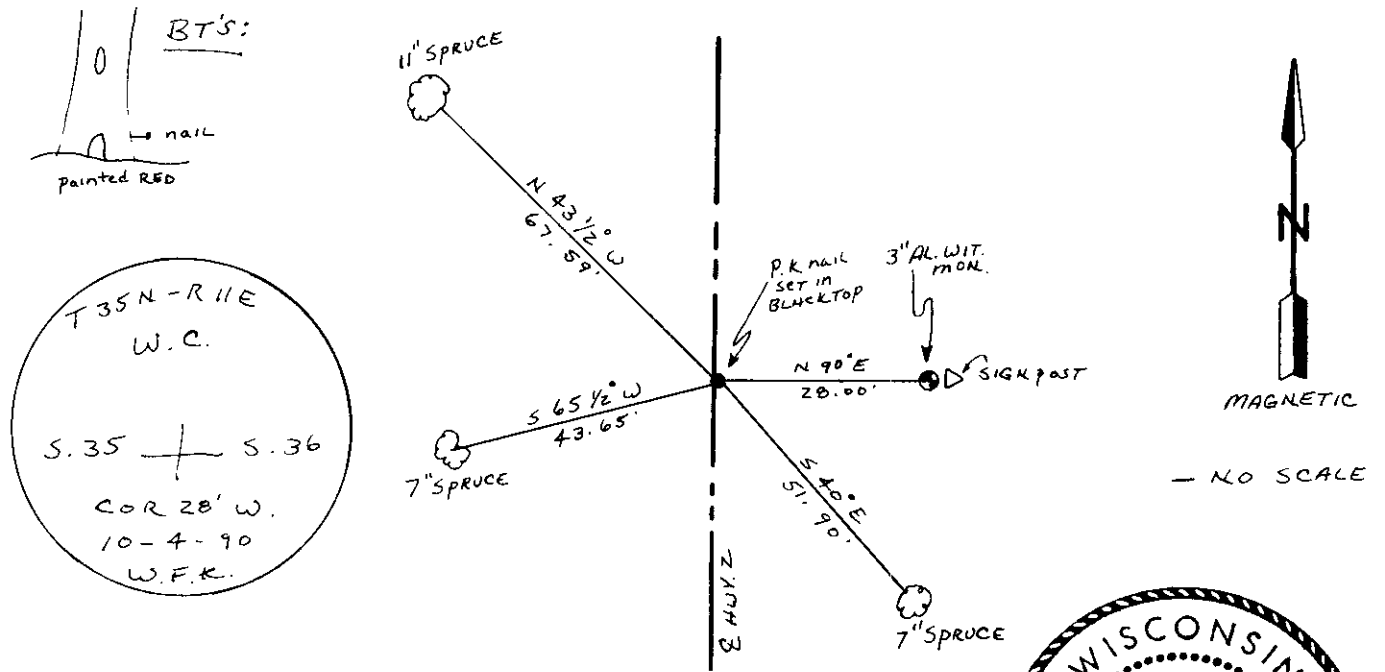
(b) (f) (g) (h) Description of monument found at this corner and if it was accepted, state all evidence (material, testimonial, occupational, plats, records, other monuments) used as a basis for accepting. If not accepted or if nothing was found, state evidence used as basis for establishing location. If reestablished through lost corner proportionate methods, indicate all monuments, distances and directions used to establish. Indicate type of monument found or set and sign post.

1859 - Wm. DAUGHERTY ESTABLISHED ORIGINAL CORNER; BT'S: 8" Spruce, N 47° W, 14 LKS.
 9" Spruce, S 63° E, 17 LKS.

1990 - I FOUND NO EVIDENCE OF CORNER OR BEARING TREES. SET CORNER BY SINGLE PROPORTION.

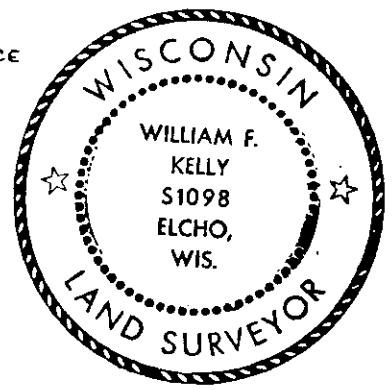
* SEE OPPOSITE SIDE FOR DIRECTION & DISTANCES TO CORNER.

(c) (d) (e) Plan view of corner with ties to at least 4 witness monuments. If in disagreement with previously established corner, show the distances between the two corners and also indicate the ties to the disputed corner.



(i) I, WILLIAM F. KELLY
 (type or print name) certify that the corner location on this record was determined by me or under my direction and control and that this U.S. Public Land Survey Monument Record is correct and complete to the best of my knowledge and belief.

William F. Kelly 10-30-90
 Signature Date

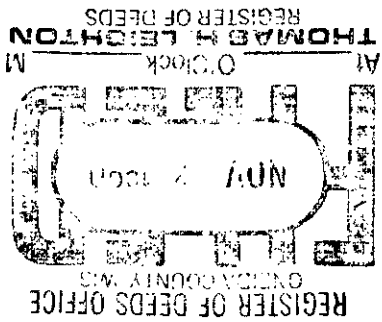
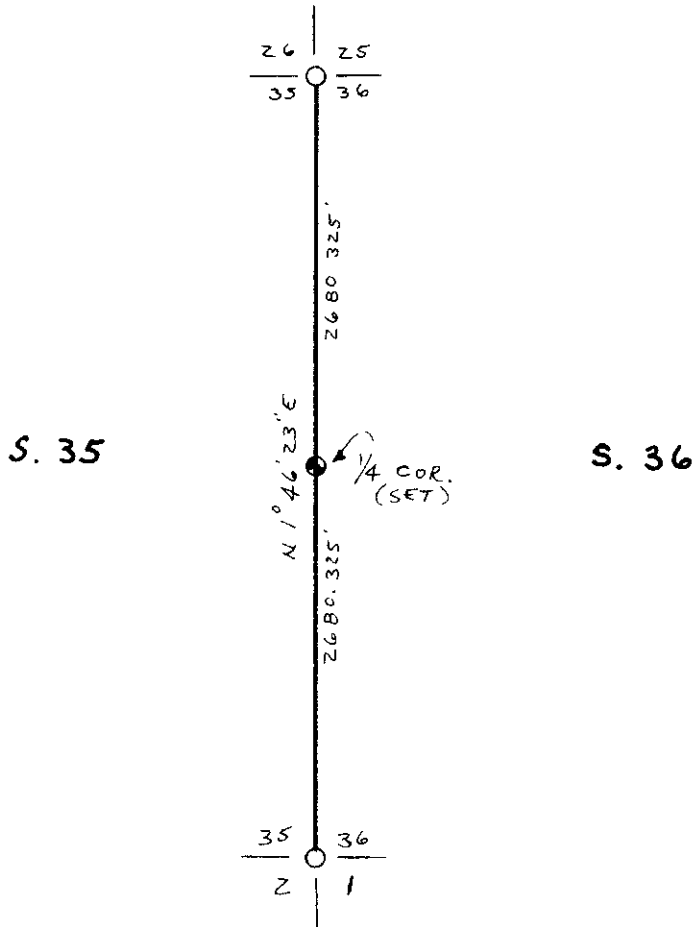


Stamp
 3511352000

Index No. X-21

T 35 N - R 11 E

* 1/4 CORNER SET BY SINGLE PROPORTIONAL



FEB 08 2023

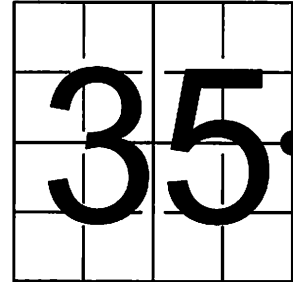
KYLE J. FRANSON
REGISTER OF DEEDS

U S PUBLIC LAND SURVEY MONUMENT RECORD - ADDENDUM

NOTE: This form is intended and designed to fulfill all requirements of Wisconsin Administrative Code, Chapter A-E 7.08 U.S. Public Land Survey Monument Record (3) (a-1)

A-E 7.08(3)(a) Identity of corner
EAST 1/4 CORNER OF SECTION 35
TOWNSHIP 35 NORTH
RANGE 11 EAST OF THE 4TH PM
TOWN OF SCHOEPKE,
COUNTY OF ONEIDA

WISCORS - ONEIDA COUNTY
N: 104,930.587 USft (104,930.672)
E: 352,369.091 USft (352,369.036)
Datum: NAD83 (2011)
GNSS Method RTN - Direct
GNSS Control WISCORS VRS



The coordinate value shown has been verified by the average of two or more GPS observations at a markedly different time. Values shown in parenthesis, are previously published measurements.

A-E 7.08(3)(b) Description of any record evidence, monument evidence, occupational evidence, testimonial evidence, or any other material evidence.

Original Surveyor: William E Daugherty

Date of Original Survey	Commenced:	July 25, 1859	Original Accessories:			
	Completed:	July 29, 1859	Spruce	8	N 47° W	4
			Spruce	9	S 63° E	17

See Previous Monument Record: Index No. X-21 - October 4, 1990 - Surveyor 1098 - William F. Kelly - Thence:

January 7, 1997 - Surveyor 887 - Thomas R. Arnott - indicates this position as "Fnd. P.K." on O.C.S. Map C1316.
July 11, 2008 - Surveyor 1731 - Kip W. Soder - indicates this position as "P.K. nail found in place" on O.C.S. Map B7059.

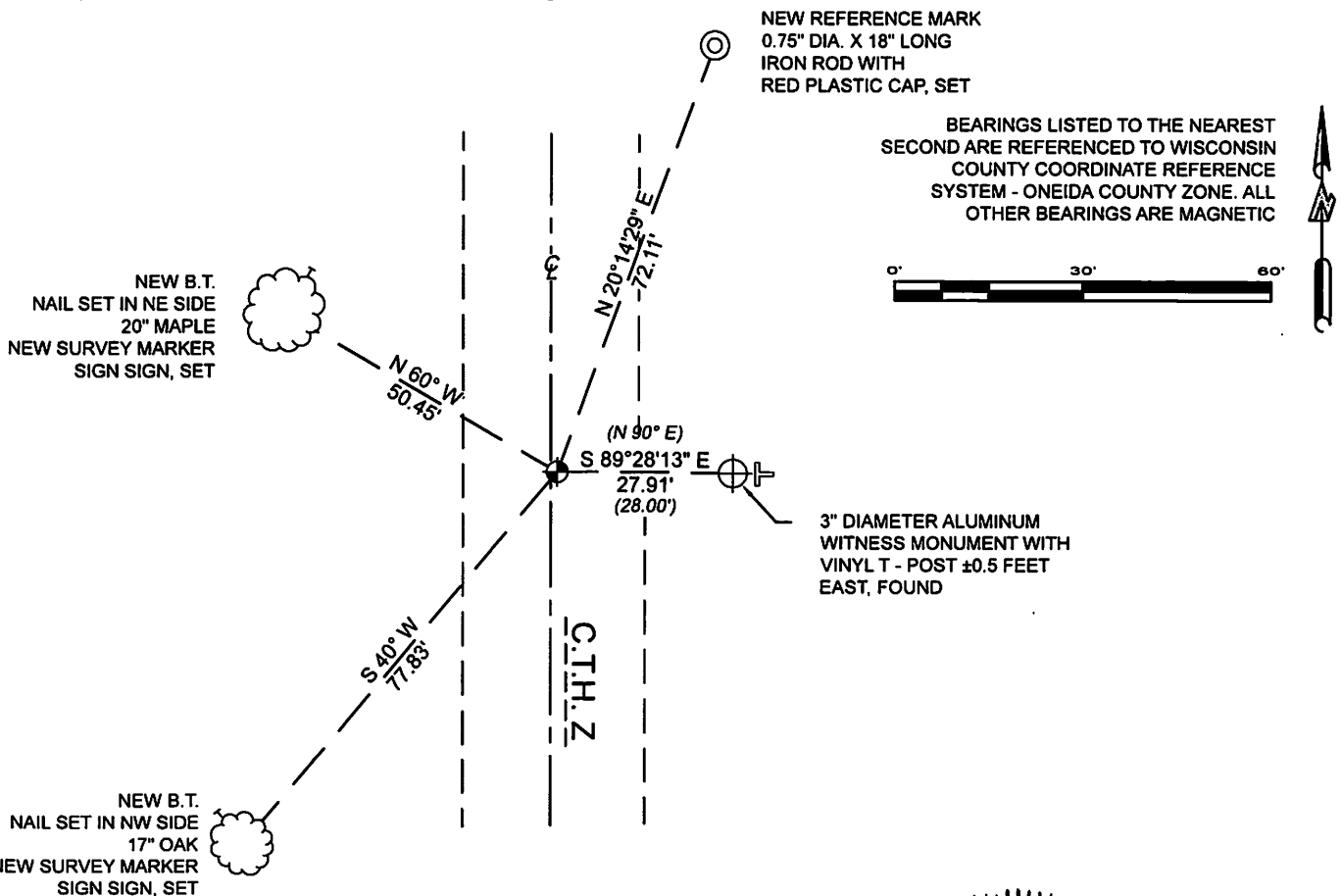
April 29, 2022 - In preparation of a road reconstruction project, I found: standard size Mag nail ±1 foot east of the County Trunk Highway Z centerline. I also found Kelly's aluminum witness monument and Vinyl T-Post.

I did not find any BT's established as noted on U.S. Public Land Survey Monument Record X - 21.

A-E 7.08(3)(f) I restored this corner through ACCEPTANCE OF A FOUND PERPETUATED LOCATION.

August 22, 2022 - After completion of the road reconstruction project, I reset the Mag nail with a 2.5" long steel survey marker spike with a 1" diameter head at the previously measured location, and established 3 new witnesses as shown below.

A-E 7.08(3)(c)(d)(e)(h) Plan view of corner with references to at least 4 witness monuments. If in disagreement with previously established corner, show the distances between the two corners and also indicate the ties to the disputed. The directions and distances to other public land survey corners used as evidence or used for determining the corner location.



A-E 7.08(3)(i) I, Jeffrey L. DeMuth, Professional Land Surveyor No. S-2656, hereby certify that the corner location on this record was determined by me or under my direction and control and that this U.S. Public Land Survey Monument Record is correct and complete to the best of my knowledge, and belief

Handwritten signature of Jeffrey L. DeMuth

January 17, 2023
DATE

SIGNATURE



X-21

43511352000