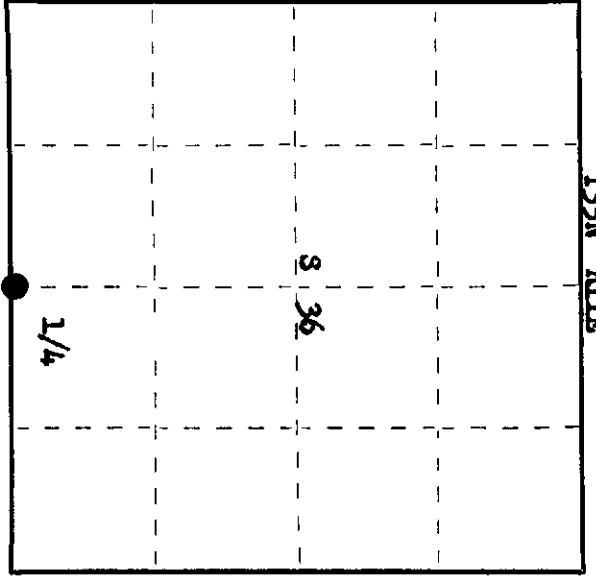
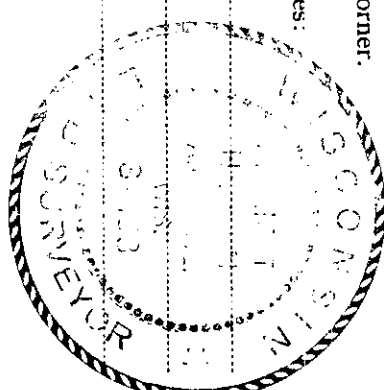


State of Wisconsin

County of **Oneida** } ss.

I **Phillip T. Hansen** do hereby certify that on the **17th** day of **November**, 19 **76**, I found evidence of the **Quarter** corner of the **Section 36 and 1** Township **35 & 34**, North, Range **11 East**, Fourth Principal Meridian, as described hereon; and that from this evidence I established a new monument and accessories as described hereon to perpetuate the original location of this corner.

Resident witnesses:
Glen Barker
Jim Claflin
Herb Wagoner



○ = Corner monument restored.

History of original corner establishment:

Corner established by Hiram C. Fellows, Deputy Surveyor, in 1857, from which White Pine 12" bears N 13° E 16 links and White Pine 12" bears S 53° W 12 links. Corner restored by H.C. Lawrence, Registered Land Surveyor. Recovered a very old squared stake with rock cairn built around base. Recovered original pine stump BT S 53° W 12 links. Set new 4" oak post and marked NBTs - Maple 17" S 53° E 33 links, White Pine 18" N 41° E 108.5 links. Post stands south of old road.

Description of corner evidence found:

Recovered 4" oak post, squared and scribed 1/4S SL, 1/4S S36, with large rock cairn around base. Post recovered in poor condition.
 Corner sets 15 links south of old E-W county line road.
 Recovered OBT - Original pine stump S 53° W 12 links, now decayed.
 Maple 17" S 53° E 33 links, scribed 1/4S NBT (now dead).
 White Pine 18" (20") N 41° E 108.5 links, scribed 1/4S S36 NBT.

Description of monument and accessories I established to perpetuate the original location of this corner.

Replaced 4" oak post with 2 1/2" aluminum Berritsen A-1 Federal Monument, with magnet in cap and base. Cap stamped:
 Monument projects 2 1/2" above ground.
 Replaced rock cairn around base of monument.
 NBTs - Red Oak 10" N 32° W 79.4 links, scribed 1/4 BT.
 Maple 12" S 71° W 58.2 links, scribed 1/4 BT.

T35N R1E
 1/4 S 36
 T34N R1E
 S498-1976

Dated at **Rhinelander**, Wis., this **6th** day of **December**, 19 **76**

Signature: *Phillip T. Hansen* Title: **Registered Land Surveyor** Registration No. **S-498**
 (County Surveyor, Registered Land Surveyor, or other duly authorized official)

Office of Register of Deeds, County of **Oneida**.
 I hereby certify that the within instrument was filed in this office for record on the **20th** day of **December**, 19 **76** at **1:00** o'clock **P.** M.

Gene Teraguchi Kukihar
 (Register of Deeds)

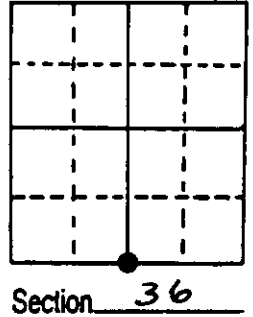
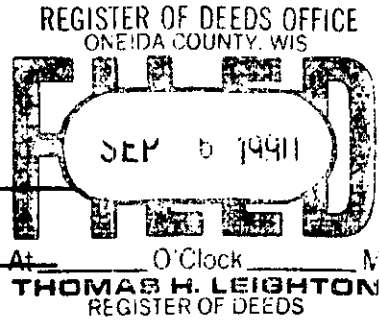
By _____ Deputy

00000015

U.S. PUBLIC LAND SURVEY MONUMENT RECORD

Note: This form is intended and designed to fulfill all requirements of Wisconsin Administrative Code, Chapter A-E 7.08 U.S. Public Land Survey Monument Record (3) (a) (b) (c) (d) (e) (f) (g) (h) (i). An additional sheet may be added if necessary to conform with said requirements.

(a) Corner location: Township 35 North
 Range 11 East/West
 Town/City/Village SCHOEPKE
 County ONEIDA



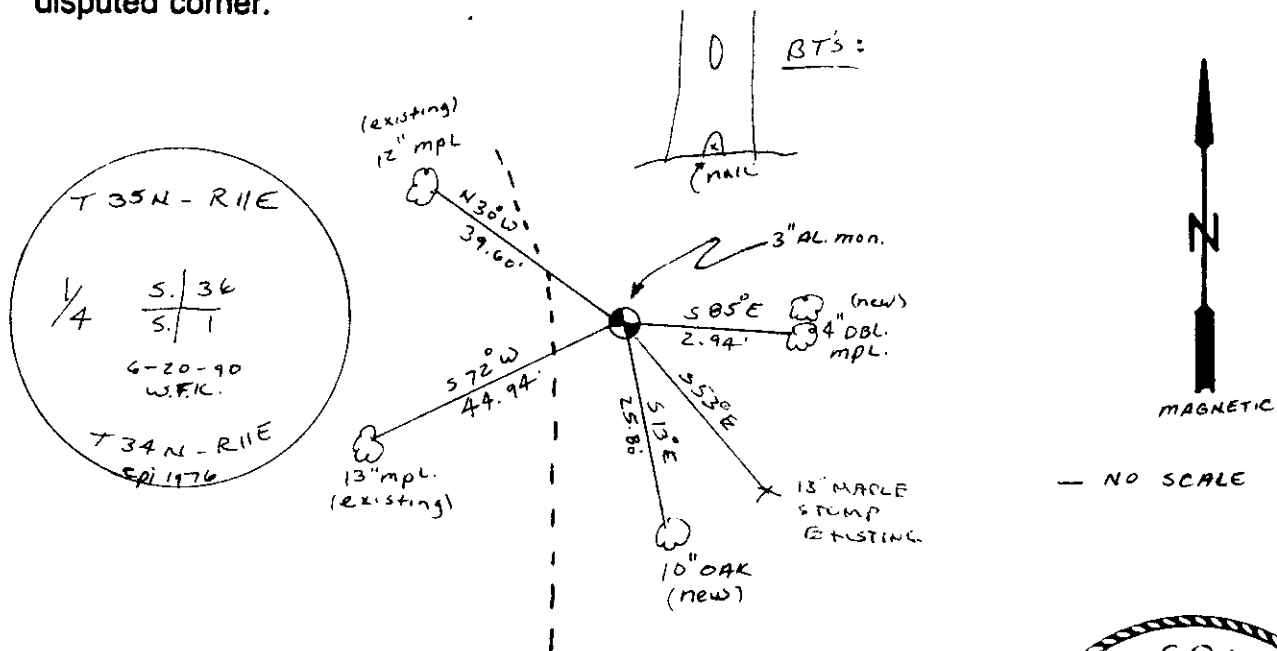
(b) (f) (g) (h) Description of monument found at this corner and if it was accepted, state all evidence (material, testimonial, occupational, plats, records, other monuments) used as a basis for accepting. If not accepted or if nothing was found, state evidence used as basis for establishing location. If reestablished through lost corner proportionate methods, indicate all monuments, distances and directions used to establish. Indicate type of monument found or set and sign post.

1857 - H. C. FELLOWS ESTABLISHED ORIGINAL CORNER

CORNER RESTORED BY H. C. LAURENCE. RECOVERED A VERY OLD SQUARED STAKE WITH ROCK BUILT AROUND BASE. RECOVERED ORIG. PINE STUMP BT. S 53° W, 12 1/2 Ks. SET NEW 4" OAK POST AND MARKED N BT'S - MAPLE 17", S 53° E, 33 1/2 Ks. W. PINE 18", N 41° E, 108 1/2 Ks.

1990 - I FOUND 3" AL. MONUMENT SET BY CONSOLIDATED PAPER CO. I FOUND 3 EXISTING BT'S & SET 2 N BT'S.

(c) (d) (e) Plan view of corner with ties to at least 4 witness monuments. If in disagreement with previously established corner, show the distances between the two corners and also indicate the ties to the disputed corner.



(i) I, WILLIAM F. KELLY
 (type or print name) certify that the corner location on this record was determined by me or under my direction and control and that this U.S. Public Land Survey Monument Record is correct and complete to the best of my knowledge and belief.

William F. Kelly Signature 8-28-90 Date



Stamp
 3511360020

Index No. 2-23