

CERTIFIED LAND CORNER RESTORATION

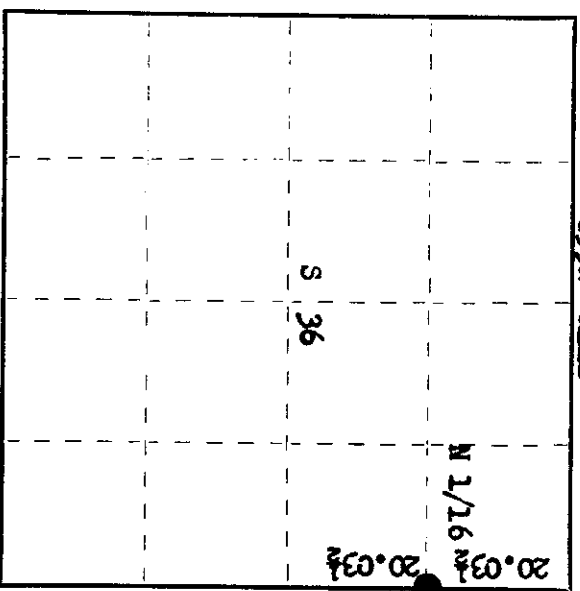
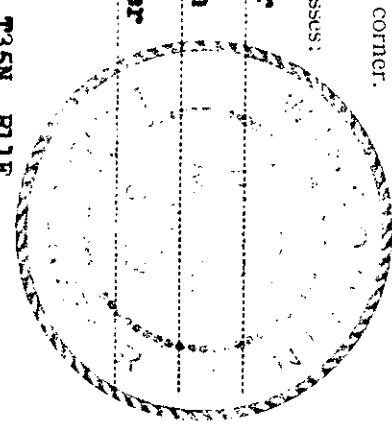
Index No. W-25

State of Wisconsin } ss.
 County of Oneida

I Phillip T. Hansen, do hereby certify that on the 30th day of November, 1976, I found evidence of the N 1/16 corner of Section 31 & 36 Township 35, North, Range 11 East, Fourth, Principal Meridian,

as described hereon; and that from this evidence I established a new monument and accessories as described hereon to perpetuate the original location of this corner.

Resident witnesses:
Glen Barker
Jim Martin
Herb Wagoner



History of original corner establishment:

Corner established by H.C. Lawrence, Registered Land Surveyor, in 1959. Ran a random line S 3° 00' E from recovered Section Corner 25, 30, 31 and 36 80.14 chains to close out 47 links east of Township Corner. Set 3" cedar post at 20.034 chains and 12 links west intermediate. Marked NBTs - Maple 9" S 53° W 109 links. Basswood S 43° E 93 links.

Description of corner evidence found:

Recovered 4" cedar post, squared and scribed N 1/16 S31, N 1/16 S36 in fair condition. Also an old squared cedar post laying beside it. Recovered OBT - Maple 9" (10") S 53° W 109 links, (12 links) Bass 16" S 43° E 93 links (14 links) Unable to see any evidence of post being moved. Lawrence's ties would not fit the facing on the BTs.

Description of monument and accessories I established to perpetuate the original location of this corner. Replaced 4" cedar post with 1 1/2" OD iron pipe with 2" brass cap stamped: Monument projects 2' above ground. MBT - Maple 10" N 52° W 46.5 links, scribed 1/16 BT.

S498
 T35N R
 N 1/16 36 | 31 12
 CPL-1976 E

3511363000

Dated at Brinelander, Wis., this 13th day of December, 1976

Signature Phillip T. Hansen Title Registered Land Surveyor Registration No. 3498
 (County Surveyor, Registered Land Surveyor, or other duly authorized official)

Office of Register of Deeds, County of Oneida I hereby certify that the within instrument was filed in this office for record on the 30th day of November, 1976 at 1:00 o'clock P. M.

Terrie Thayer Fisher
 (Register of Deeds)

By _____ Deputy

○ = Corner monument restored.