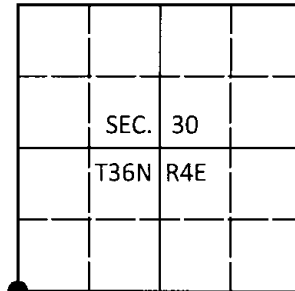


# U.S. PUBLIC LAND SURVEY MONUMENT RECORD

Note: This form is intended and designed to fulfill all requirements of Wisconsin Administrative Code, Chapter A-E 7.08 U.S. Public Land Survey Monument Record (3)(a-i).

(a) CORNER LOCATION  
Cor. of Secs. 25, 30, 31 & 36  
Township 36 North  
Range 3 & 4 East of the 4th P.M.  
Town of Lynne  
County of Oneida

WISCORS - Oneida County  
N: 140,199.73 USft  
E: 102,194.38 USft  
Datum: NAD 83(2011)  
GNSS Method: RTN Direct  
GNSS Control: WISCORS VRS



## (b) HISTORY OF ORIGINAL CORNER ESTABLISHMENT

Original Surveyor: Alexander Anderson

Original Accessories:

Date of Survey Commenced: July 13, 1864  
Completed: July 24, 1864

birch 12" S70°W, 18 lks.  
birch 14" N42°W, 42 lks.  
elm 10" N42°E, 13 lks.  
birch 9" S32°E, 17 lks.

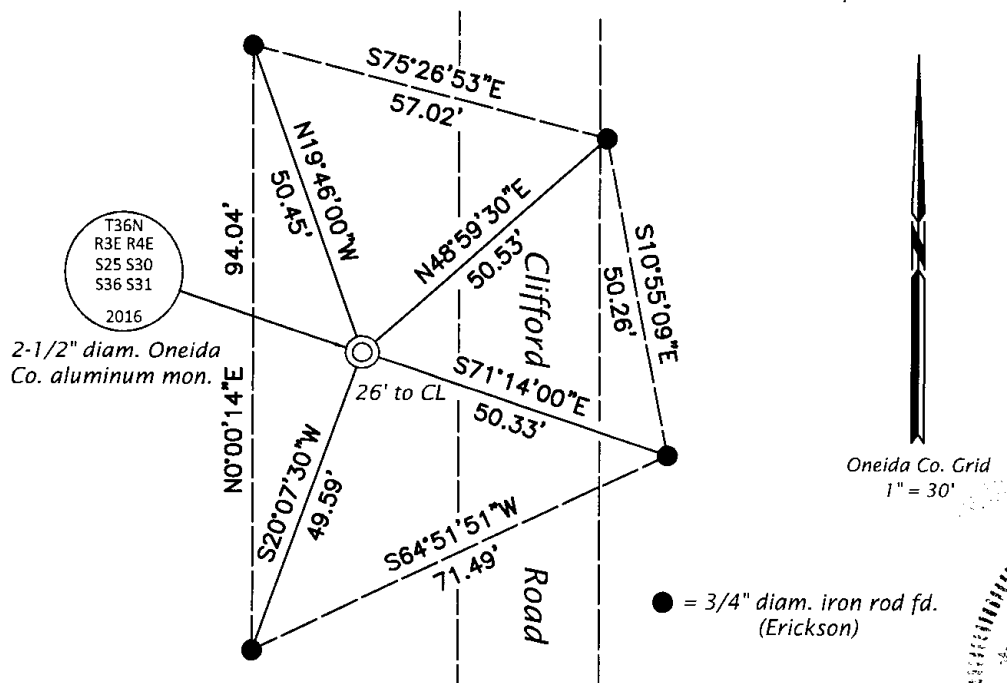
(b)(f)(g)(h) Description of monument found at this corner and if it was accepted, state all evidence (material, testimonial, occupational, plats, records, other monuments) used as a basis for accepting. If not accepted or if nothing was found, state evidence used as basis for establishing location. If re-established through lost corner proportionate methods, indicate all monuments, distances and directions used to establish. Indicate type of monument and sign post found or set.

September 29, 2005: OCS Map No. L-2309 by Randy Erickson, RLS. Corner proportioned based on previous survey by Vaughan. Aluminum monument set with reference monuments set 50.00 feet from corner.

August 22, 2016: I found and accepted the record monument, the undisturbed base of a sheared-off Price Co. aluminum monument. In its place, I set a 2-1/2" diam., 30" long aluminum pipe with a 3-1/4" diam. Oneida Co. aluminum cap projecting 2" above the ground surface. I found accessories as shown below and set a white vinyl sign post bearing West, 0.8 ft. dist.

The coordinate value shown has been verified by at least one of the following methods: 1) comparison to a previously GPS determined published value; 2) the value is the average of two or more GPS observations at a markedly different time; 3) one or more distances were measured back to the GPS observed corner from temporary GPS observed offset locations.

(c)(d)(e) Plan view of corner with ties to at least 4 witness monuments. If in disagreement with previously established corner, show the distances between the two corners and also indicate the ties to the disputed.

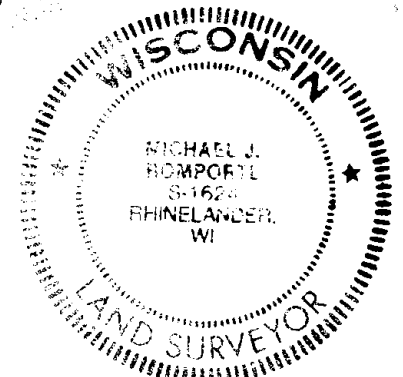


REGISTER OF DEEDS OFFICE  
ONEIDA COUNTY  
FILED

DEC 28 2016

AT \_\_\_\_\_ O'CLOCK \_\_\_\_\_ M  
KYLE J. FRANSON  
REGISTER OF DEEDS

Oneida Co. Grid  
1" = 30'



(i) I, Michael J. Romportl, Professional Land Surveyor No. S-1624, hereby certify that the corner location on this record was determined by me or under my direction and control and that this U.S. Public Land Survey Monument Record is correct and complete to the best of my knowledge and belief.

Signature: Michael J. Romportl 12/23/2016 Date

3603250000 (INDEX NO. V-1)