

6	5	4	3	2	1
7	8	9	10	11	12
18	17	16	15	14	13
19	20	21	22	23	24
30	29	28	27	26	25
31	32	33	34	35	36

T 36 N, R 03 E

CHECK BOX IF CONTINUED ON BACK:

NO. 1142

- RECORD CODES  
 FB = FIELD BOOK  
 L = LARGE MAP  
 S = SMALL MAP  
 V = VERTICAL FILE  
 SD = SECTION DRAWING  
 CSM = CERTIFIED SURVEY MAP  
 P = RECORDED PLAT

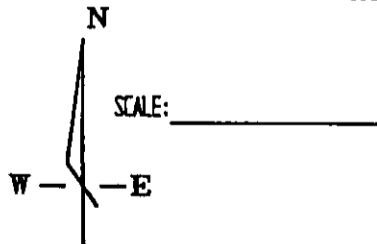
### U. S. PUBLIC LAND SURVEY MONUMENT RECORD

- THE East Quarter CORNER OF SECTIONS 25, T 36 N, R 03 E
- ORIGINAL GOVERNMENT SURVEYOR: Alex Anderson, DATE: July 18 64
- ORIGINAL BEARING TREES: - FEET - SUBSEQUENT RECOVERY RECORD:
- Birch 10" N 60° W 22 LKS - 14.5 - Found both originals V 2056
- Hemlock 12" S 38° E 48 LKS - 31.6 - Vaughan 1914
- LKS - -
- LKS - -
- ORIGINAL TOPOGRAPHY CALLS: - FEET - PRESENT TOPOGRAPHY:
- CHS - -
- CHS - -
- SUBSEQUENT RECORDS IN COUNTY SURVEYOR OFFICE WHICH REFER TO THIS CORNER: .
- V 2056, V 1583, FB 86-17, FB 86-21 -
- 
- SUBSEQUENT MONUMENTS OF RECORD: - SURVEYOR - DATE - RECORD NO.
- Post - Vaughan - 1914 - V 2056
- Standard Monument 2" x 48" with 3" brass cap - Mitchel - 1937 - FB 86-17
- SUBSEQUENT BT'S OR WM'S: - FEET - SURVEYOR - DATE - RECORD NO.
- W. Pine Stump 30" N 09° E 99 1/4 - 65.5 - Vaughan - 1914 - V2056
- W. pine Stub 30" N 61° W 90 - 59.4 - " - " - "
- 
- MEASURED DISTANCE - ADJOINING CORNER - RECORD FEET - SURVEYOR - DATE - RECORD NO.
- 2629.95 - Sec. Cor. N 39.90 CHS -2633.40 - Vaughn - 1914 - V 2056
- 2629.95 - Sec. Cor. N CHS -2634 - Mitchel - 1937 - FB 86-21
- 2633.14 - Sec. Cor. S 39.95 CHS -2636.70 - Vaughan - 1914 - V 2056
- 1/4 Cor. West CHS -5150 - Mitchel - 1937 - V 1583 FB86-17
- OTHER INFORMATION IN RECORDS:
- Search Oneida County Records, Vaughans survey only record.
- EVIDENCE FOUND AT CORNER:
- 2" x 48" iron pipe with 3" brass cap by Mitchel with a carsonite
- T-post set 1.0 feet NE
- PERSONS WHO SAW EVIDENCE: Randy Erickson, Ray Steinback, Amy Steinback,
- OTHER REASONS FOR LOCATING CORNER HERE:
- Jim Palmquist told me pipe had been there as long as he could remember.
- PRESENT CORNER MONUMENT:
- A 2" x 48" iron pipe with 3" Brass Cap stamped "1/4 S25"
- PRESENT WITNESS MONUMENTS:
- 3/4" x 24" iron rebars set flush with ground.
- GENERAL LOCATION DESCRIPTION:
- west side of old grade near bend in Deer fence
- STATE COORDINATES - N ZONE:
- N
- E
- BASIS FOR TIE BEARINGS: Magnetic

REGISTER OF DEEDS OFFICE  
ONEIDA COUNTY  
FILED

MAY 06 2016

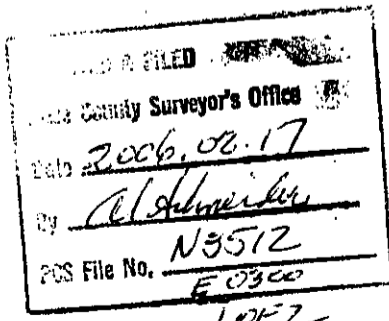
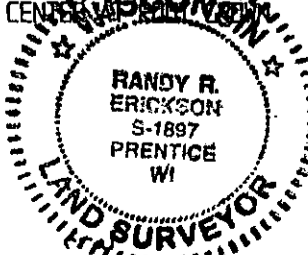
AT \_\_\_\_\_ O'CLOCK \_\_\_\_\_ M  
KYLE J. FRANSON  
REGISTER OF DEEDS



Drawing on Back

DRAWN BY: RRE

- = THIS CORNER
- ⊗ = IRON WITNESS MONUMENT
- = OTHER REFERENCES - TREES MEASURED TO ALUMINUM NAILS TO COINCIDE WITH CENTER



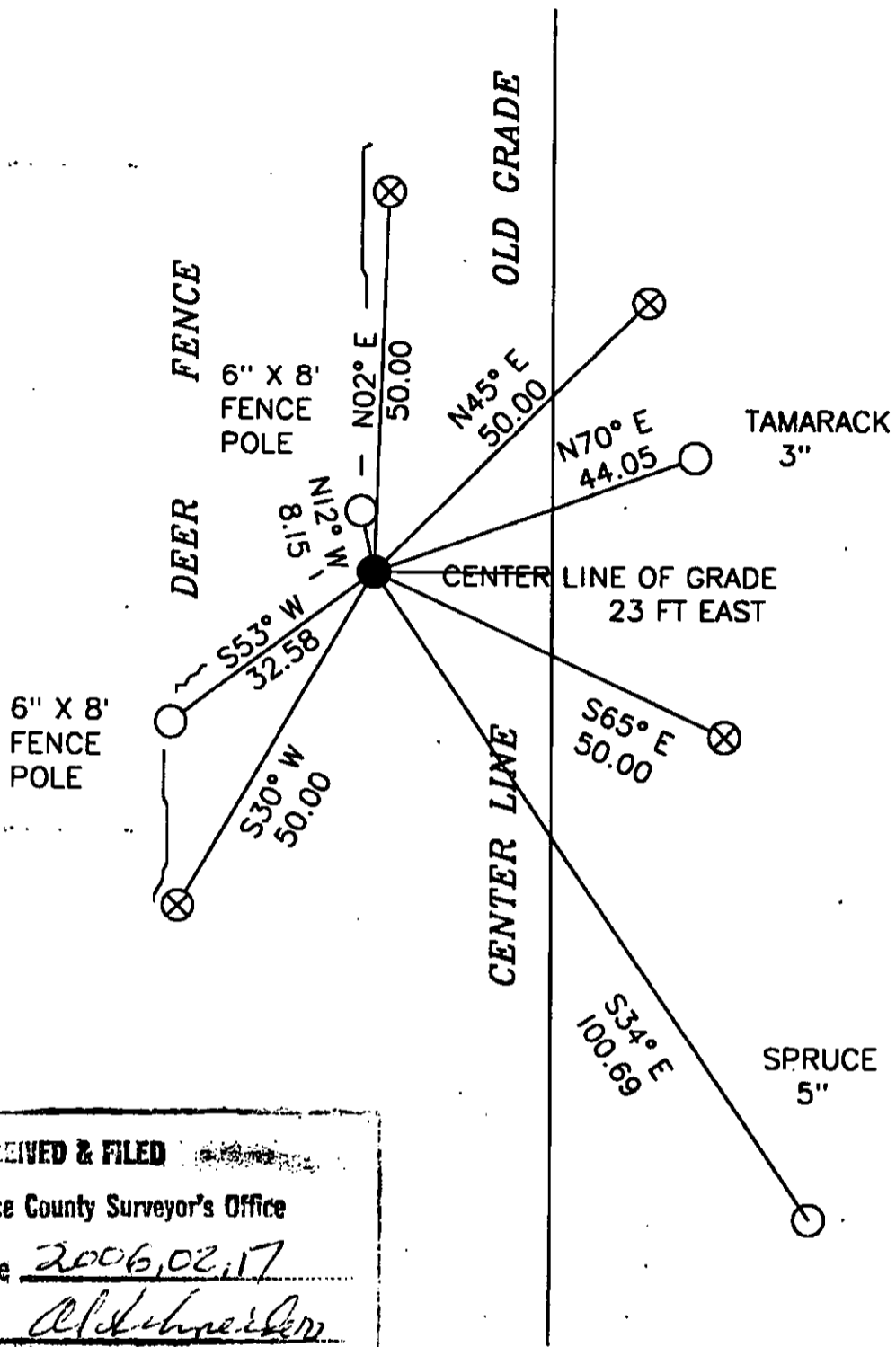
SEQUENCE NO.: N 3512  
36-4 T-1  
E 0300

I CERTIFY THAT ON THE 23 DAY OF Sept, 18 2005  
I PERPETUATED THIS CORNER AS SHOWN.  
DATED THIS 06 DAY OF Oct, 18 2005

*[Handwritten Signature]*

LAND SURVEYOR

3603252000  
10F2



RECEIVED & FILED  
 Ice County Surveyor's Office  
 Date 2006,02,17  
 By Al Schneider  
 PCS File No. N3512  
E0300  
2 OF 2



SCALE IN FEET

36-4 T-1