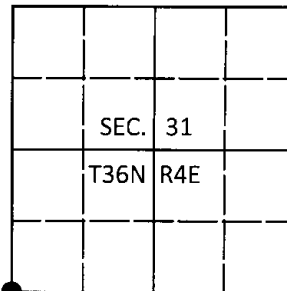


U.S. PUBLIC LAND SURVEY MONUMENT RECORD

Note: This form is intended and designed to fulfill all requirements of Wisconsin Administrative Code, Chapter A-E 7.08 U.S. Public Land Survey Monument Record (3)(a-i).

(a) CORNER LOCATION
 Cor. of Secs. 1, 6, 31 & 36
 Township 35 & 36 North
 Range 3 & 4 East of the 4th P.M.
 Town of Lynne
 County of Oneida

WISCORS - Oneida County
 N: 134,941.84 USft
 E: 102,145.38 USft
 Datum: NAD 83(2011)
 GNSS Method: RTN Direct
 GNSS Control: WISCORS VRS



(b) HISTORY OF ORIGINAL CORNER ESTABLISHMENT

Original Surveyor: Alexander Anderson

Original Accessories:

Date of Survey Commenced: July, 1864
 Completed: July, 1864

sugar 12" N52°W, 21 lks.
 sugar 12" N60°E, 25 lks.
 birch 12" S20°E, 19 lks.
 sugar 12" S25°W, 12 lks.

(b)(f)(g)(h) Description of monument found at this corner and if it was accepted, state all evidence (material, testimonial, occupational, plats, records, other monuments) used as a basis for accepting. If not accepted or if nothing was found, state evidence used as basis for establishing location. If re-established through lost corner proportionate methods, indicate all monuments, distances and directions used to establish. Indicate type of monument and sign post found or set.

Sept.-Oct., 1923: OCS Map No. L-2518 by D.S. Burnett. Burnett set "monument" from the birch GLO bearing tree and measured a new tree: elm 36" N_W 91-1/2 lks.

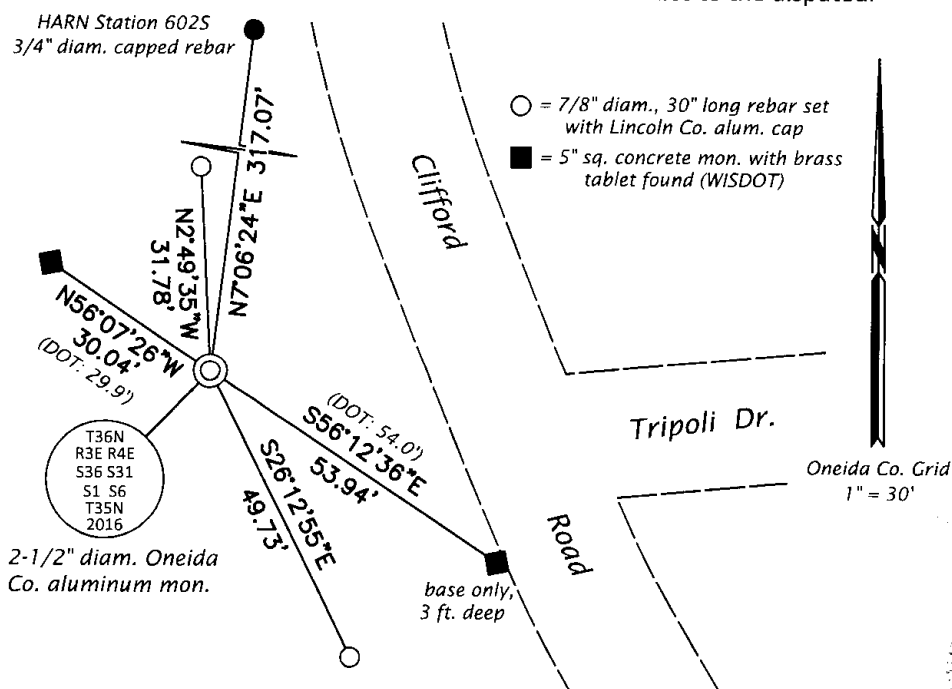
June 1, 1966: OCS Map No. L-3085 by Jack Wallin, WISDOT Party Chief. Wallin indicates the corner is marked by a 3/4" iron pipe. Wallin set two concrete reference monuments with brass discs: N60°W, 29.9' and S60°E, 54.0'.

June 9, 1966: OCS Map No. L-2139 by Leonard Risberg, RLS. Risberg drove a 1" x 24" iron pipe in the blacktop road and measured three elm bearing trees, none of which appear to be Burnett's.

November 3, 2016: Working with Tony Dallman, Lincoln County Surveyor, I found and accepted Risberg's monument, the plumb base of a bent 1-1/2" diam. iron pipe about 4 feet beneath the ground surface. As shown below, I found the Northwest WISDOT reference monument undisturbed, and the broken-off, plumb base of the Southeast monument about three feet under the shoulder of the road. Both monuments support the location of the iron pipe. At the corner point, I set a 2-1/2" diam., 30" long aluminum pipe with a 3-1/4" diam. Oneida Co. aluminum cap flush with the ground surface. Prior to our recovery, an axle shaft of unknown origin was at this location. The axle shaft was 1.0' South and 0.2' West of the true corner point. A bearing tree of unknown origin was found: red pine 20" N4°W, 103 feet. I found or established accessories as shown below and set a white vinyl sign post 2 feet North and 2 feet South of the monument marking the corner point.

The coordinate value shown has been verified by at least one of the following methods: 1) comparison to a previously GPS determined published value; 2) the value is the average of two or more GPS observations at a markedly different time; 3) one or more distances were measured back to the GPS observed corner from temporary GPS observed offset locations.

(c)(d)(e) Plan view of corner with ties to at least 4 witness monuments. If in disagreement with previously established corner, show the distances between the two corners and also indicate the ties to the disputed.

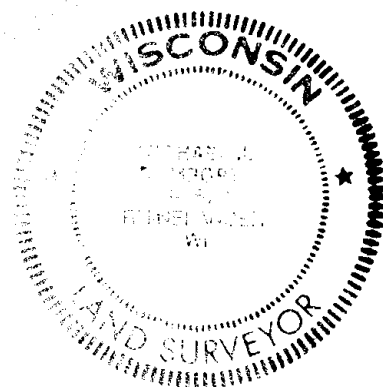


REGISTER OF DEEDS OFFICE
 ONEIDA COUNTY
 FILED

DEC 28 2016

AT _____ O'CLOCK _____ M
 KYLE J. FRANSON
 REGISTER OF DEEDS

(i) I, Michael J. Romportl, Professional Land Surveyor No. S-1624, hereby certify that the corner location on this record was determined by me or under my direction and control and that this U.S. Public Land Survey Monument Record is correct and complete to the best of my knowledge and belief.



Michael J. Romportl 12/23/2016
 Signature Date