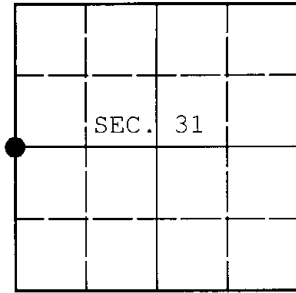


**U.S. PUBLIC LAND SURVEY MONUMENT RECORD**

Note: This form is intended and designed to fulfill all requirements of Wisconsin Administrative Code, Chapter A-E 7.08 U.S. Public Land Survey Monument Record (3) (a) (b) (c) (d) (e) (f) (g) (h) (i). An additional sheet may be added if necessary to conform with said requirements.

(a) CORNER LOCATION: WISCRS - Oneida County  
 1/4 Cor. of Secs. 31 & 36 N: 137,571.82 USft  
 Township 36 North E: 102,186.65 USft  
 Range 3 & 4 East of the 4th P.M. Datum: NAD 1983(2011)  
 Town of Lynne County of Oneida



(b) HISTORY OF ORIGINAL CORNER ESTABLISHMENT

Original Surveyor: Alexander Anderson Original Accessories:  
 Date of Survey: Commenced: July, 1864 hemlock 18" S30°W, 22 lks.  
 Completed: July, 1864 hemlock 9" S62°E, 10 lks.

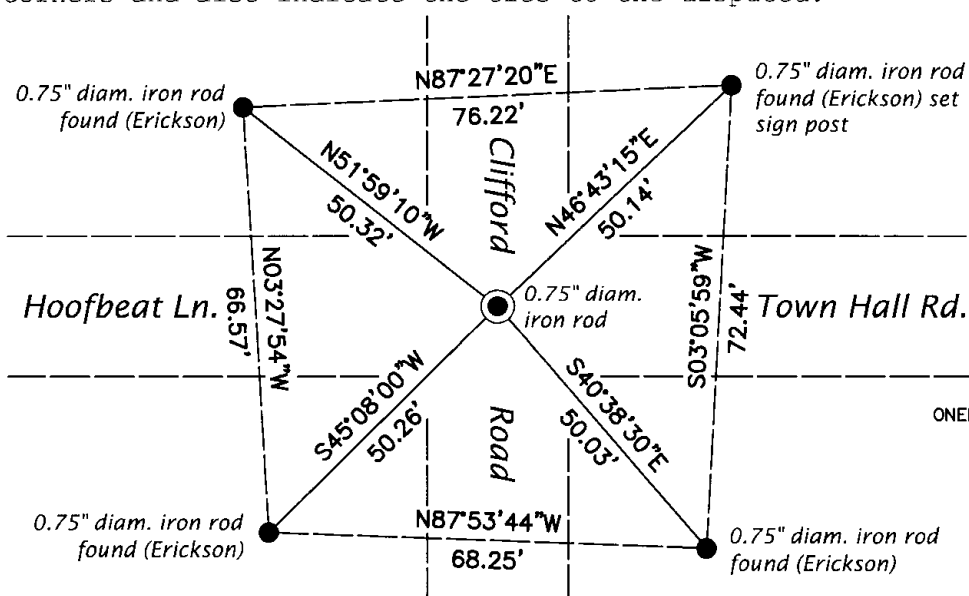
(b) (f) (g) (h) Description of monument found at this corner and if it was accepted, state all evidence (material, testimonial, occupational, plats, records, other monuments) used as a basis for accepting. If not accepted or if nothing was found, state evidence used as basis for establishing location. If re-established through lost corner proportionate methods, indicate all monuments, distances and directions used to establish. Indicate type of monument and sign post found or set.

Date unknown: Survey map by Randy Erickson, Registered Land Surveyor S-1897. Set 3/4" diam., 24" long iron bar at intersection of road centerlines.

May 10, 2016: I found and accepted Erickson's 0.75" diam. iron rod 6" beneath the centerline intersection of gravel roads. I found accessories as shown below.

The coordinate value shown has been verified by at least one of the following methods: 1) comparison to a previously GPS determined published value; 2) the value is the average of two or more GPS observations at a markedly different time; 3) one or more distances were measured back to the GPS observed corner from temporary GPS observed offset locations.

(c) (d) (e) Plan view of corner with ties to at least 4 witness monuments. If in disagreement with previously established corner, show the distances between the two corners and also indicate the ties to the disputed.

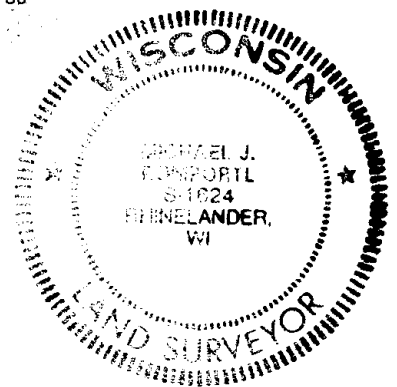


ONEIDA CO. GRID  
 1" = 30'

REGISTER OF DEEDS OFFICE  
 ONEIDA COUNTY  
 FILED

DEC 28 2016

AT \_\_\_\_\_ O'CLOCK \_\_\_\_\_ M  
 KYLE J. FRANSON  
 REGISTER OF DEEDS



(i) I, Michael J. Romportl, Professional Land Surveyor No. S-1624, hereby certify that the corner location on this record was determined by me or under my direction and control and that this U.S. Public Land Survey Monument Record is correct and complete to the best of my knowledge and belief.

Michael J Romportl 12/23/2016  
 Signature Date