

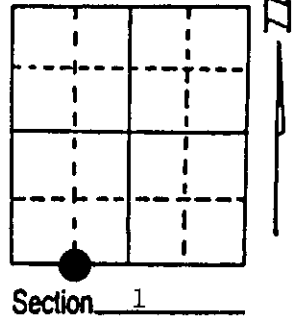
U.S. PUBLIC LAND SURVEY MONUMENT RECORD

Note: This form is intended and designed to fulfill all requirements of Wisconsin Administrative Code, Chapter A-E 7.08 U.S. Public Land Survey Monument Record (3) (a) (b) (c) (d) (e) (f) (g) (h) (i). An additional sheet may be added if necessary to conform with said requirements.

(a) Corner location: Township 36 North
 Range 4 East/West

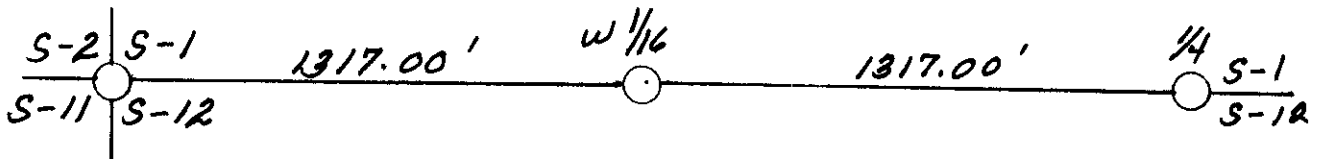
Town/City/Village Lynne

County Oneida



(b) (f) (g) (h) Description of monument found at this corner and if it was accepted, state all evidence (material, testimonial, occupational, plats, records, other monuments) used as a basis for accepting. If not accepted or if nothing was found, state evidence used as basis for establishing location. If reestablished through lost corner proportionate methods, indicate all monuments, distances and directions used to establish. Indicate type of monument found or set and sign post.

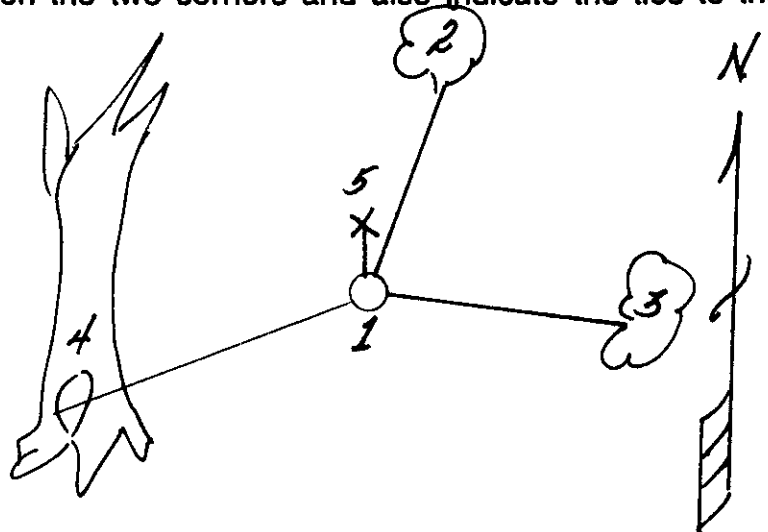
- 12/13/1934 - A.J. Lytle established this corner - set a post and one BT:
30" Yellow Birch, S62°W, 106 1/2 Links (70.29')
- 8/10/1994 - Milo E. Stefan found large Yellow Birch with stump face rotted and chewed out by porcupine den. No trace of Lytle post present.
- 10/10/1994 - Milo E. Stefan - upon running traverse between Section Corner Westerly and Quarter Corner Easterly; I restore this corner on line and midpoint between the two controlling corners.



(c) (d) (e) Plan view of corner with ties to at least 4 witness monuments. If in disagreement with previously established corner, show the distances between the two corners and also indicate the ties to the disputed corner.

- 1) 2" x 36" Aluminum Monument.
- 2) 8" Balsam Fir, N8°E, 7.68'.
- 3) 5" Balsam Fir, S86°E, 14.01'.
- 4) 30" Yellow Birch Snag, S57°W, 81.6'.
- 5) Plastic Sign Post, North, 1.0'.

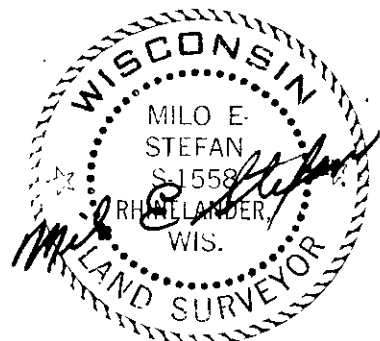
Distances to nail in side of BT.
 Stump blaze scribed "BT".



(i) I, Milo E. Stefan
 (type or print name) certify that the corner location on this record was determined by me or under my direction and control and that this U.S. Public Land Survey Monument Record is correct and complete to the best of my knowledge and belief.

Milo E. Stefan
 Signature

10/11/94
 Date



Stamp 3604010030

Index No. E-22