

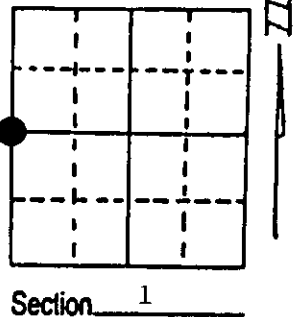
U.S. PUBLIC LAND SURVEY MONUMENT RECORD

Note: This form is intended and designed to fulfill all requirements of Wisconsin Administrative Code, Chapter A-E 7.08 U.S. Public Land Survey Monument Record (3) (a) (b) (c) (d) (e) (f) (g) (h) (i). An additional sheet may be added if necessary to conform with said requirements.

(a) Corner location: Township 36 North
 Range 4 East/West

Town/City/Village Lynne

County Oneida



(b) (f) (g) (h) Description of monument found at this corner and if it was accepted, state all evidence (material, testimonial, occupational, plats, records, other monuments) used as a basis for accepting. If not accepted or if nothing was found, state evidence used as basis for establishing location. If reestablished through lost corner proportionate methods, indicate all monuments, distances and directions used to establish. Indicate type of monument found or set and sign post.

May 1865 - Edward D. Palmer established this corner at 54.96 chains and set a wood post/two BTs:

4" Tamarack, N68°W, 17 Links(11.22)" Tamarack, S25°E, 18 Links (11.88)

10/20/1896 - B.F. Dorr found Billy Allens stake as Quarter Corner and made two BTs:

4" Tamarack, N43°W, 2 1/2 Links

7" Spruce, N62°E, 30 Links

9/18/1934 - A.J. Lytle found evidence of this corner as follows:

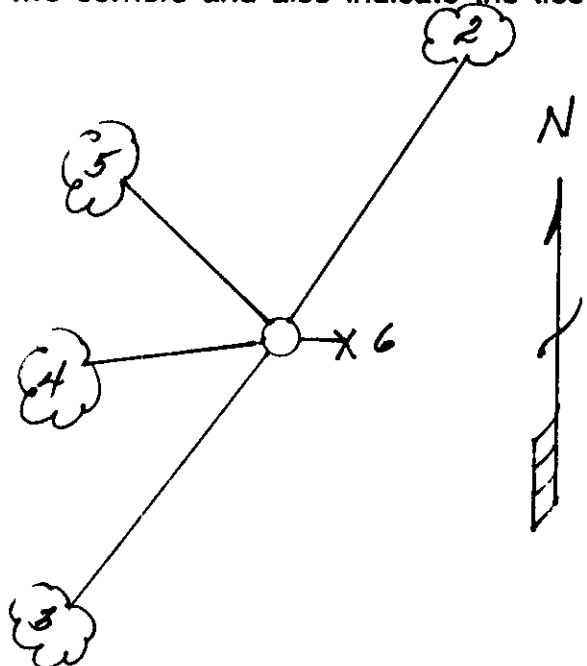
- 1) Original BT still here.
- 2) Dorr's 4" Tamarack is now just a stump.
- 3) Dorr's 7" Spruce in good condition.
- 4) Ran East to Dorr's Center Quarter - 39.15 1/2 chains.
- 5) Ran North to Section Corner - 48.23 chains.

7/20/1994 - Milo E. Stefan found 2" x 60" iron pipe/brass cap with stumps of Dorr's BTs rotted to ground line. Brass Cap stamped by A.J. Lytle. We made four new BTs and set sign post.

(c) (d) (e) Plan view of corner with ties to at least 4 witness monuments. If in disagreement with previously established corner, show the distances between the two corners and also indicate the ties to the disputed corner.

- 1) 2" x 60" Iron Pipe/Brass Cap.
- 2) 10" White Spruce, N24°E, 153.15'.
- 3) 4" Tamarack, S32°W, 39.85'.
- 4) 3" Black Spruce, S84°W, 24.68'.
- 5) 5" Tamarack, N46°W, 34.09'.
- 6) Plastic Sign Post, East, 1.0'.

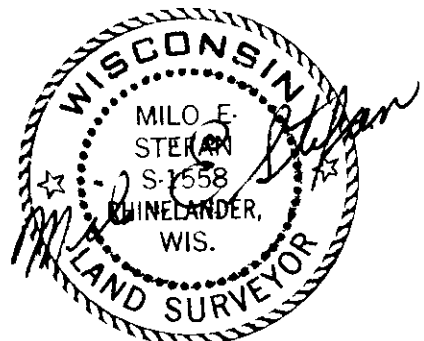
Distances to nail in side of BTs.
 Stump blaze scribed "BT".



(i) I, Milo E. Stefan
 (type or print name) certify that the corner location on this record was determined by me or under my direction and control and that this U.S. Public Land Survey Monument Record is correct and complete to the best of my knowledge and belief.

Milo E. Stefan
 Signature

July 25, 1994
 Date



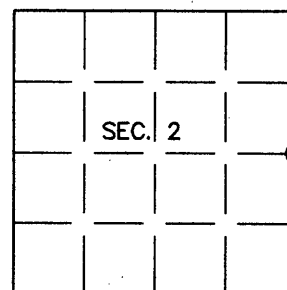
Index No. C-21

Stamp 3604022000

U.S. PUBLIC LAND SURVEY MONUMENT RECORD

Note: This form is intended and designed to fulfill all requirements of Wisconsin Administrative Code, Chapter A-E 7.08 U.S. Public Land Survey Monument Record (3)(a)(b)(c)(d)(e)(f)(g)(h)(i). An additional sheet may be added if necessary to conform with said requirements.

(a) CORNER LOCATION: Plane Coordinates
 1/4 Cor. of Secs. 1 & 2 X:
 Township 36 North Y:
 Range 4 East of the 4th P.M. Datum:
 Town of Lynne County of Oneida



(b) HISTORY OF ORIGINAL CORNER ESTABLISHMENT

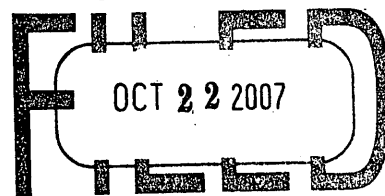
Original Surveyor: Edward Palmer Original Accessories:
 Date of Survey: Commenced May, 1865 Tamarack 9" N68°W, 17 lks.
 Completed June, 1865 Tamarack 7" S25°E, 18 lks.

(b)(f)(g)(h) Description of monument found at this corner and if it was accepted, state all evidence (material, testimonial, occupational, plats, records, other monuments) used as a basis for accepting. If not accepted or if nothing was found, state evidence used as basis for establishing location. If re-established through lost corner proportionate methods, indicate all monuments, distances and directions used to establish. Indicate type of monument and sign post found or set.

25 July 1994: USPLS Monument Record prepared by Milo E. Stefan and filed in the office of the Oneida County Register of Deeds. Found 2 ins. diam. iron pipe with brass cap based on previously perpetuated location.

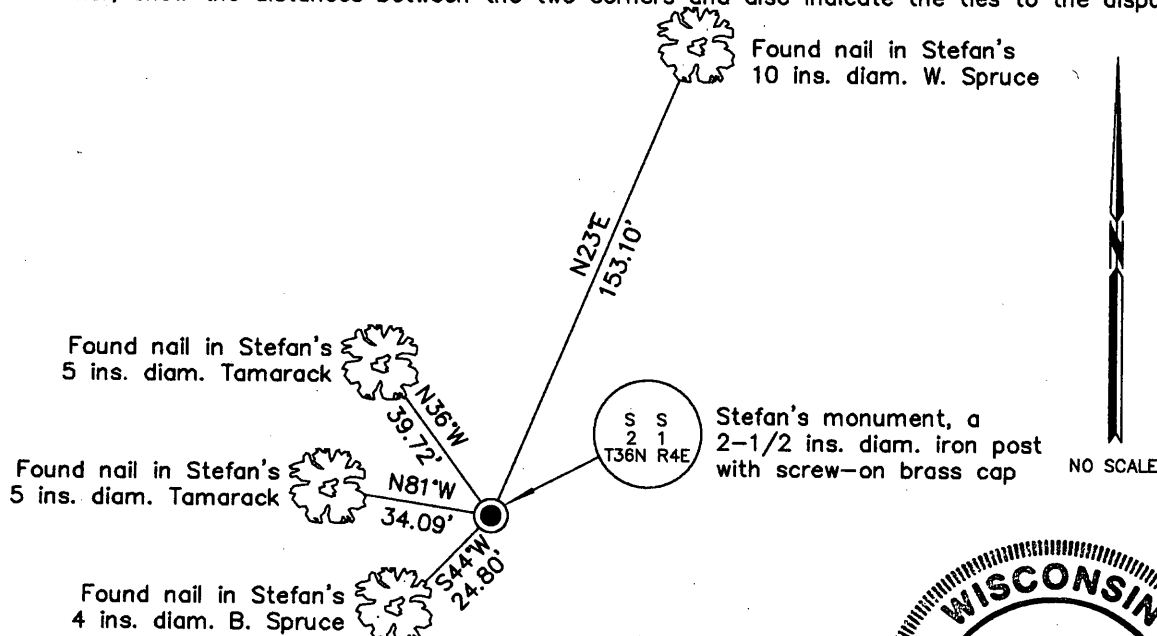
17 April 2006: I found and accepted Stefan's monument, a 2-1/2 ins. diam. iron post with screw-on brass cap projecting 24 ins. above the bog surface. Stefan's accessories do not match his record so I re-measured as shown below and found a white plastic sign post bearing Northeast, 1 ft. dist.

REGISTER OF DEEDS OFFICE
ONEIDA COUNTY, WIS.



At _____ O'Clock _____ M
THOMAS H. LEIGHTON
REGISTER OF DEEDS

(c)(d)(e) Plan view of corner with ties to at least 4 witness monuments. If in disagreement with previously established corner, show the distances between the two corners and also indicate the ties to the disputed.



(i) I, Jeffrey W. Austin, Registered Land Surveyor No. S-1885, hereby certify upon honor that the corner location on this record was determined by me or under my direction and control and that this U.S. Public Land Survey Monument Record is correct and complete to the best of my knowledge and belief.

OCT 8, 2007
Date



INDEX NO. C-21 (3604022000)

Signature