

U.S. PUBLIC LAND SURVEY MONUMENT RECORD

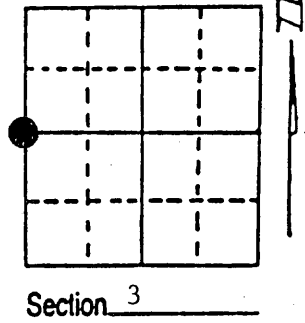
Note: This form is intended and designed to fulfill all requirements of Wisconsin Administrative Code, Chapter A-E 7.08 U.S. Public Land Survey Monument Record (3) (a) (b) (c) (d) (e) (f) (g) (h) (i). An additional sheet may be added if necessary to conform with said requirements.

(a) Corner location: Township 36 North

Range 4 East/West

Town/City/Village Lynne

County Oneida



(b) (f) (g) (h) Description of monument found at this corner and if it was accepted, state all evidence (material, testimonial, occupational, plats, records, other monuments) used as a basis for accepting. If not accepted or if nothing was found, state evidence used as basis for establishing location. If reestablished through lost corner proportionate methods, indicate all monuments, distances and directions used to establish. Indicate type of monument found or set and sign post.

6/1865 - Edward D. Palmer established this corner and set a wood post and two BTs:
 2½" Spruce, N39°W, 100 Links 3" Spruce, S48°E, 85 Links

12/16/1915 - D. H. Vaughan restored corner by Lost Methods. He set a wood post and two new BTs:
 20" W. Pine Stump, S77°E, 65 Links
 28" W. Pine Stump, S78°W, 27½ Links

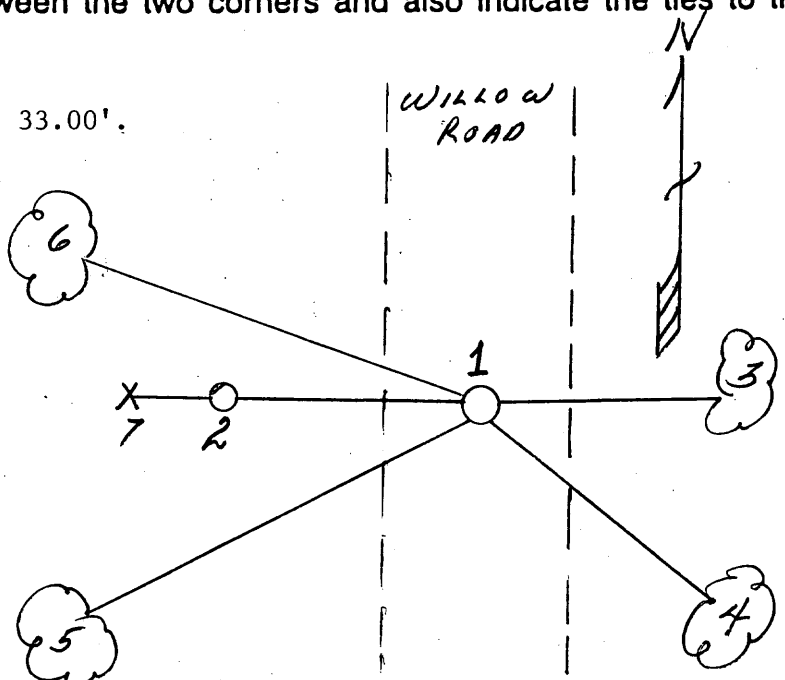
Unknown time and parties set a Witness Corner on West side of Willow Road. W.C. is a 2" x 60" iron pipe with brass cap in good condition.

10/17/1991 - Milo E. Stefan accepts this Witness Corner and placed a railroad spike in road surface for true Quarter Corner; took new BTs and set plastic sign post.

(c) (d) (e) Plan view of corner with ties to at least 4 witness monuments. If in disagreement with previously established corner, show the distances between the two corners and also indicate the ties to the disputed corner.

- 1) Railroad spike.
- 2) 2" x 60" iron pipe/brass cap, west, 33.00'.
- 3) 4" Red Maple, N89°E, 77.56'.
- 4) 10" Tamarack, S26°E, 156.57'.
- 5) 8" Tamarack, S72°W, 59.17'.
- 6) 10" Tamarack, N77°W, 76.29'.
- 7) Plastic sign post, west of Witness Corner, 1.3'.

Distances to nail in side of BTs.
 Stump blazes scribed "BT".



(i) I, Milo E. Stefan
 (type or print name) certify that the corner location on this record was determined by me or under my direction and control and that this U.S. Public Land Survey Monument Record is correct and complete to the best of my knowledge and belief.

Milo E. Stefan
 Signature

November 6, 1991
 Date

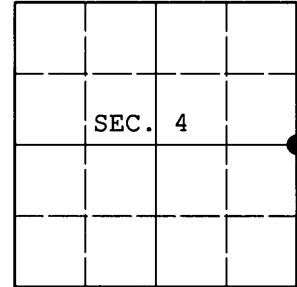


Stamp
 3604042000

U.S. PUBLIC LAND SURVEY MONUMENT RECORD

Note: This form is intended and designed to fulfill all requirements of Wisconsin Administrative Code, Chapter A-E 7.08 U.S. Public Land Survey Monument Record (3) (a) (b) (c) (d) (e) (f) (g) (h) (i). An additional sheet may be added if necessary to conform with said requirements.

(a) CORNER LOCATION: Plane Coordinates
 1/4 Cor. of Secs. 3 & 4 N:
 Township 36 North E:
 Range 4 East of the 4th P.M. Datum:
 Town of Lynne County of Oneida



(b) HISTORY OF ORIGINAL CORNER ESTABLISHMENT

Original Surveyor: Edward Palmer Original Accessories:
 Date of Survey: Commenced May, 1865 spruce 2-1/2" N39°W, 100 lks.
 Completed June, 1865 spruce 3" S48°E, 85 lks.

(b) (f) (g) (h) Description of monument found at this corner and if it was accepted, state all evidence (material, testimonial, occupational, plats, records, other monuments) used as a basis for accepting. If not accepted or if nothing was found, state evidence used as basis for establishing location. If re-established through lost corner proportionate methods, indicate all monuments, distances and directions used to establish. Indicate type of monument and sign post found or set.

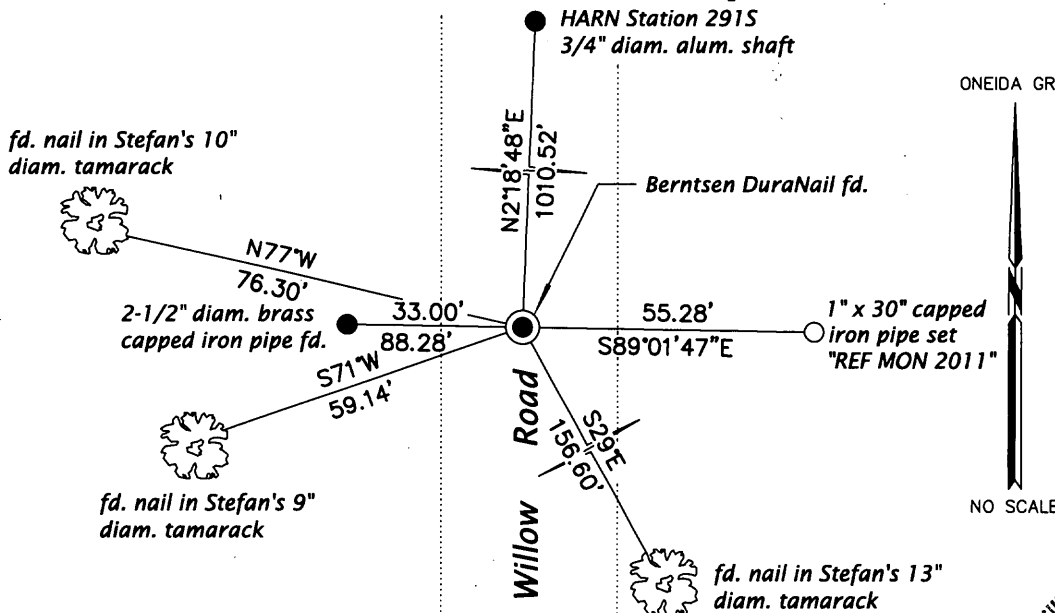
NOTE: This is a perpetuation of a previous USPLS Monument Record by Milo E. Stefan, RLS dated November 6, 1991 and filed in the office of the Oneida County Register of Deeds. A complete history of the corner can be found on the previous monument record. I accept the previous location as a true and faithful perpetuation or reestablishment of the original corner location and further perpetuate it as follows.

December 2, 2011: I found and accepted a Berntsen DuraNail 5 ft. West of the centerline of Willow Road. Stefan's maple bearing tree is gone. I found or established accessories as shown below and set a white plastic sign post adjacent to each reference monument.

REGISTER OF DEEDS OFFICE
 ONEIDA COUNTY
FILED
 JAN 16 2012

AT _____ O'CLOCK _____ M
THOMAS H. LEIGHTON
 REGISTER OF DEEDS

(c) (d) (e) Plan view of corner with ties to at least 4 witness monuments. If in disagreement with previously established corner, show the distances between the two corners and also indicate the ties to the disputed.



(i) I, Jeffrey W. Austin, Registered Land Surveyor No. S-1885, hereby certify that the corner location on this record was determined by me or under my direction and control and that this U.S. Public Land Survey Monument Record is correct and complete to the best of my knowledge and belief.



 Signature Date DEC. 31, 2011