

U.S. PUBLIC LAND SURVEY MONUMENT RECORD

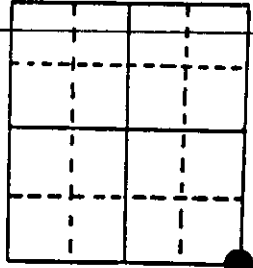
Note: This form is intended and designed to fulfill all requirements of Wisconsin Administrative Code, Chapter A-E 7.08 U.S. Public Land Survey Monument Record (3) (a) (b) (c) (d) (e) (f) (g) (h) (i). An additional sheet may be added if necessary to conform with said requirements.

(a) Corner location: Township 36 North

Range 4 East/West

Town/City/Village Lynne

County Oneida



Section 12

(b) (f) (g) (h) Description of monument found at this corner and if it was accepted, state all evidence (material, testimonial, occupational, plats, records, other monuments) used as a basis for accepting. If not accepted or if nothing was found, state evidence used as basis for establishing location. If reestablished through lost corner proportionate methods, indicate all monuments, distances and directions used to establish. Indicate type of monument found or set and sign post.

9/3/1860 - Alfred Millard established this corner and set a wood post and BTs:
 12" Y. Birch, N55°E, 26 Links 20" Y. Birch, S45°E, 27 Links
 12" Sugar, S10°W, 20 Links 12" Y. Birch, N60°E, 19 Links

1940's - A. J. Lytle re-established this corner from original survey evidence and placed a 2" x 60" iron pipe with brass cap. No record of references.

1989 - Romportl and crew placed target and plastic sign post.

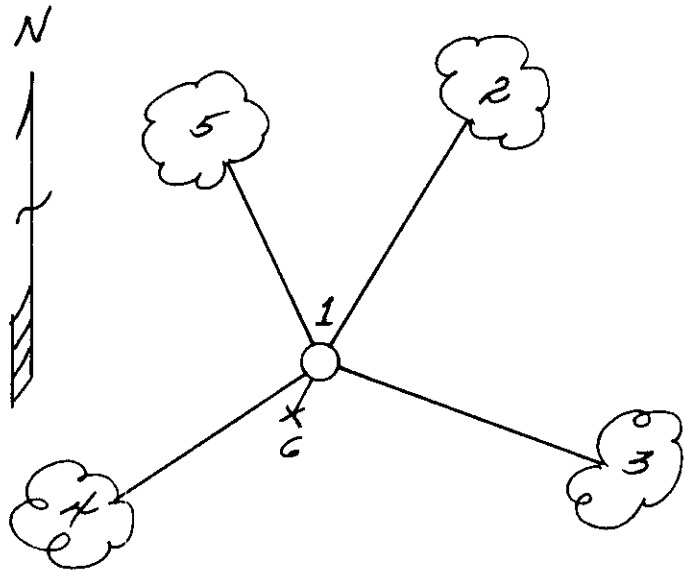
3/13/1991 - Milo E. Stefan found monument and plastic sign post in place and made new BTs.

(c) (d) (e) Plan view of corner with ties to at least 4 witness monuments. If in disagreement with previously established corner, show the distances between the two corners and also indicate the ties to the disputed corner.

- 1) 2" x 60" iron pipe/brass pipe cap
- *2) 4" Aspen, N23°E, 27.75 feet
- 3) 6" White Ash, S80°E, 54.10 feet
- 4) 4" Black Cherry, S54°W, 20.16 feet
- *5) 3" Aspen, N24°W, 19.81 feet
- 6) Plastic sign post, SW, 2.8 feet

Distances to nail in side of BTs
 Stump blazes scribed "BT"

*Aspen bark scribed



REGISTER OF DEEDS OFFICE
 ONEIDA COUNTY, WIS.
FILED
 APR 8 1991
 At _____ O'Clock _____ M
THOMAS H. LEIGHTON
 REGISTER OF DEEDS

WISCONSIN
 MILO E-
 STEFAN
 S-1558
 RHINELANDER,
 WIS.
 LAND SURVEYOR

(i) I, Milo E. Stefan
 (type or print name) certify that the corner location on this record was determined by me or under my direction and control and that this U.S. Public Land Survey Monument Record is correct and complete to the best of my knowledge and belief.

Milo E. Stefan
 Signature

March 16, 1991
 Date

Stamp 3604120000

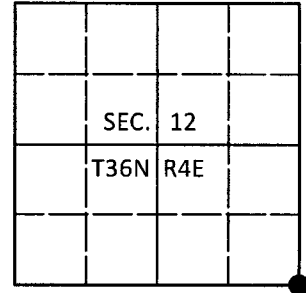
Index No. J-25

U.S. PUBLIC LAND SURVEY MONUMENT RECORD

Note: This form is intended and designed to fulfill all requirements of Wisconsin Administrative Code, Chapter A-E 7.08 U.S. Public Land Survey Monument Record (3)(a-i).

(a) CORNER LOCATION
Cor. of Secs. 7, 12, 13 & 18
Township 36 North
Range 4 & 5 East of the 4th P.M.
Towns of Lynne & Little Rice
County of Oneida

WISCRS - Oneida County
N: 155,978.44 USft
E: 133,792.70 USft
Datum: NAD 83(2011)
GNSS Method: Real-Time Network
GNSS Control: WISCORS VRS



(b) HISTORY OF ORIGINAL CORNER ESTABLISHMENT

Original Surveyor: _____ Original Accessories: _____

Date of Survey _____ Commenced: _____
Completed: _____

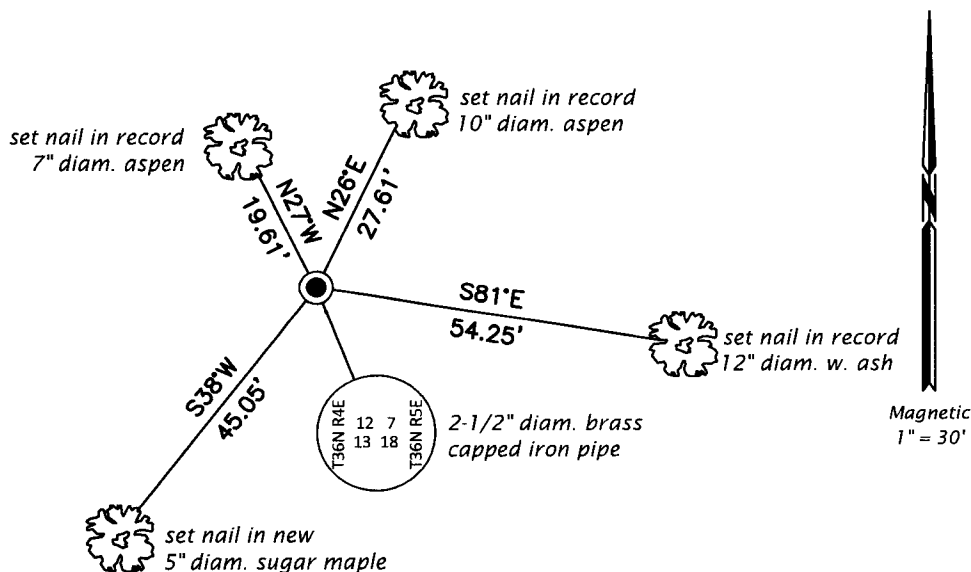
(b)(f)(g)(h) Description of monument found at this corner and if it was accepted, state all evidence (material, testimonial, occupational, plats, records, other monuments) used as a basis for accepting. If not accepted or if nothing was found, state evidence used as basis for establishing location. If re-established through lost corner proportionate methods, indicate all monuments, distances and directions used to establish. Indicate type of monument and sign post found or set.

This is a perpetuation of a previous USPLS Monument Record by Milo E. Stefan, RLS dated March 16, 1991 and filed in the office of the Oneida County Register of Deeds. A complete history of the corner can be found on the previous monument record. I accept the previous location as a true and faithful perpetuation or reestablishment of the original corner location and further perpetuate it as follows.

October 10, 2017: Jeff Austin visited the corner and recovered the record monument, a 2-1/2" diam. iron pipe with a 3" diam. Lytle brass cap projecting 30" above the ground surface. Stefan's cherry was found standing dead. Accessories were found or established as shown below. A white vinyl sign post was found Southwest, 2.8 ft.

The coordinate value shown has been verified by at least one of the following methods: 1) comparison to a previously GPS determined published value; 2) the value is the average of two or more GPS observations at a markedly different time; 3) one or more distances were measured back to the GPS observed corner from temporary GPS observed offset locations.

(c)(d)(e) Plan view of corner with ties to at least 4 witness monuments. If in disagreement with previously established corner, show the distances between the two corners and also indicate the ties to the disputed.



REGISTER OF DEEDS OFFICE
ONEIDA COUNTY
FILED

DEC 28 2017

AT _____ O'CLOCK _____ M
KYLE J. FRANSON
REGISTER OF DEEDS



(i) I, Michael J. Romportl, Professional Land Surveyor No. S-1624, hereby certify that the corner location on this record was determined by me or under my direction and control and that this U.S. Public Land Survey Monument Record is correct and complete to the best of my knowledge and belief.

Michael J. Romportl 12/27/2017
Signature Date