

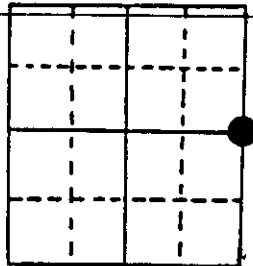
# U.S. PUBLIC LAND SURVEY MONUMENT RECORD

Note: This form is intended and designed to fulfill all requirements of Wisconsin Administrative Code, Chapter A-E 7.08 U.S. Public Land Survey Monument Record (3) (a) (b) (c) (d) (e) (f) (g) (h) (i). An additional sheet may be added if necessary to conform with said requirements.

(a) Corner location: Township 36 North  
Range 4 East/West

Town/City/Village Lynne

County Oneida



Section 12

(b) (f) (g) (h) Description of monument found at this corner and if it was accepted, state all evidence (material, testimonial, occupational, plats, records, other monuments) used as a basis for accepting. If not accepted or if nothing was found, state evidence used as basis for establishing location. If reestablished through lost corner proportionate methods, indicate all monuments, distances and directions used to establish. Indicate type of monument found or set and sign post.

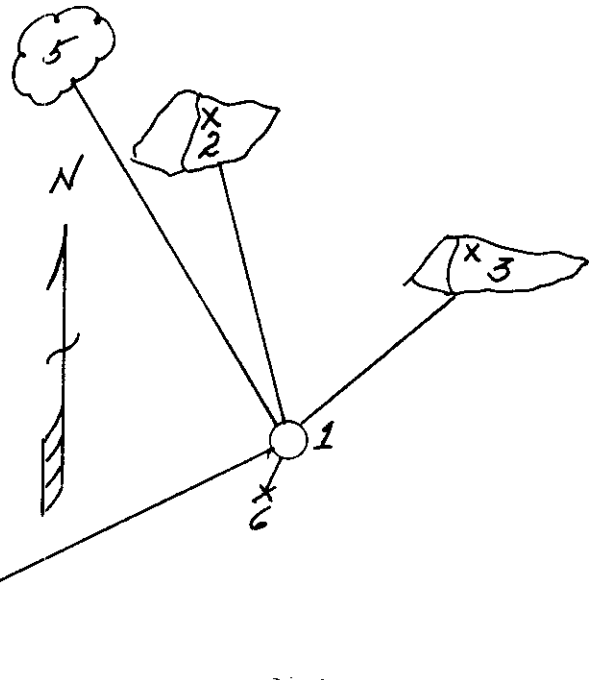
9/3/1860 - Alfred Millard established this corner and set a wood post and BTs:  
12" Sugar, S87°E, 5 Links                      12" Sugar, N56°W, 35 Links

3/13/1991 - Milo E. Stefan found 2" x 60" iron pipe with brass cap stamped to identify corner. I accept this monument as the Quarter Corner and restored same by making BTs and placing a plastic sign post.

(c) (d) (e) Plan view of corner with ties to at least 4 witness monuments. If in disagreement with previously established corner, show the distances between the two corners and also indicate the ties to the disputed corner.

- 1) 2" x 60" iron pipe/brass cap
- 2) 2' x 2' x 2' granite boulder, N28°W, 17.85 feet
- 3) 2' x 2' x 1' granite boulder, N40°E, 17.78 feet
- 4) 9" Sugar Maple, S65°W, 65.80 feet
- 5) 6" Sugar Maple, N30°W, 58.45 feet
- 6) Plastic sign post, Southwest, 1.0 feet

Distances to nail in side of BTs  
or + (cross) on top of boulders  
BT stumps blaze scribed "BT"



REGISTER OF DEEDS OFFICE  
ONEIDA COUNTY, WIS.  
**FILED**  
APR 8 1991  
At \_\_\_\_\_ O'Clock \_\_\_\_\_ M  
THOMAS H. LEIGHTON  
REGISTER OF DEEDS

(i) I, Milo E. Stefan  
(type or print name) certify that the corner location on this record was determined by me or under my direction and control and that this U.S. Public Land Survey Monument Record is correct and complete to the best of my knowledge and belief.

Milo E. Stefan  
Signature

March 16, 1991  
Date



Index No. G-25

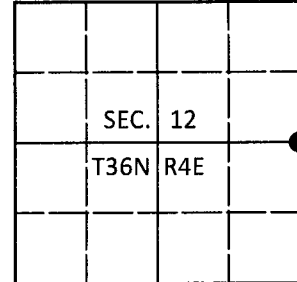
Stamp 3604122000

# U.S. PUBLIC LAND SURVEY MONUMENT RECORD

Note: This form is intended and designed to fulfill all requirements of Wisconsin Administrative Code, Chapter A-E 7.08 U.S. Public Land Survey Monument Record (3)(a-i).

(a) CORNER LOCATION  
 1/4 Cor. of Secs. 7 & 12  
 Township 36 North  
 Range 4 & 5 East of the 4th P.M.  
 Towns of Lynne & Little Rice  
 County of Oneida

WISCRS - Oneida County  
 N: 158,626.70 USft  
 E: 133,792.97 USft  
 Datum: NAD 83(2011)  
 GNSS Method: Real-Time Network  
 GNSS Control: WISCORS VRS



(b) HISTORY OF ORIGINAL CORNER ESTABLISHMENT

Original Surveyor: \_\_\_\_\_ Original Accessories: \_\_\_\_\_  
 Date of Survey Commenced: \_\_\_\_\_ Completed: \_\_\_\_\_

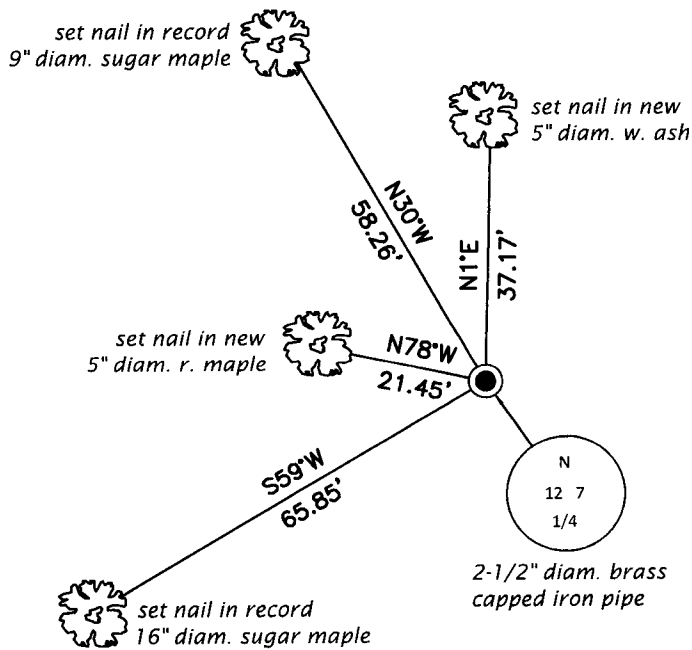
(b)(f)(g)(h) Description of monument found at this corner and if it was accepted, state all evidence (material, testimonial, occupational, plats, records, other monuments) used as a basis for accepting. If not accepted or if nothing was found, state evidence used as basis for establishing location. If re-established through lost corner proportionate methods, indicate all monuments, distances and directions used to establish. Indicate type of monument and sign post found or set.

*This is a perpetuation of a previous USPLS Monument Record by Milo E. Stefan, RLS dated March 16, 1991 and filed in the office of the Oneida County Register of Deeds. A complete history of the corner can be found on the previous monument record. I accept the previous location as a true and faithful perpetuation or reestablishment of the original corner location and further perpetuate it as follows.*

*October 10, 2017: Jeff Austin visited the corner and recovered the record monument, a 2-1/2" diam. iron pipe with a 2-1/2" diam. brass cap projecting 24" above the ground surface. Stefan's boulders were found in place. Accessories were found or established as shown below. A white vinyl sign post was found adjacent to the monument.*

*The coordinate value shown has been verified by at least one of the following methods: 1) comparison to a previously GPS determined published value; 2) the value is the average of two or more GPS observations at a markedly different time; 3) one or more distances were measured back to the GPS observed corner from temporary GPS observed offset locations.*

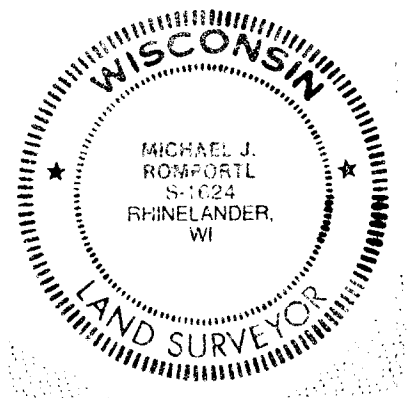
(c)(d)(e) Plan view of corner with ties to at least 4 witness monuments. If in disagreement with previously established corner, show the distances between the two corners and also indicate the ties to the disputed.



REGISTER OF DEEDS OFFICE  
 ONEIDA COUNTY  
 FILED

DEC 28 2017

AT \_\_\_\_\_ O'CLOCK \_\_\_\_\_ M  
 KYLE J. FRANSON  
 REGISTER OF DEEDS



(i) I, Michael J. Romportl, Professional Land Surveyor No. S-1624, hereby certify that the corner location on this record was determined by me or under my direction and control and that this U.S. Public Land Survey Monument Record is correct and complete to the best of my knowledge and belief.

Michael J. Romportl  
 Signature

12/27/2017  
 Date