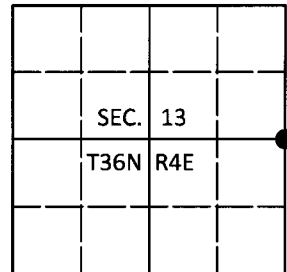


U.S. PUBLIC LAND SURVEY MONUMENT RECORD

Note: This form is intended and designed to fulfill all requirements of Wisconsin Administrative Code, Chapter A-E 7.08 U.S. Public Land Survey Monument Record (3)(a-i).

(a) CORNER LOCATION
 1/4 Cor. of Secs. 13 & 18
 Township 36 North
 Range 4 & 5 East of the 4th P.M.
 Town of Lynne/Little Rice
 County of Oneida

WISCORS - Oneida County
 N: 153,341.89 USft
 E: 133,827.40 USft
 Datum: NAD 83(1991)
 GNSS Method: Real-Time Network
 GNSS Control: WISCORS VRS



(b) HISTORY OF ORIGINAL CORNER ESTABLISHMENT

Original Surveyor: Alfred Millard

Original Accessories:

Y. Birch 12 S70°W, 12 lks.
 Cedar 10 N70°W, 11 lks.

Date of Survey Commenced: Aug., 1860
 Completed: Sep., 1860

(b)(f)(g)(h) Description of monument found at this corner and if it was accepted, state all evidence (material, testimonial, occupational, plats, records, other monuments) used as a basis for accepting. If not accepted or if nothing was found, state evidence used as basis for establishing location. If re-established through lost corner proportionate methods, indicate all monuments, distances and directions used to establish. Indicate type of monument and sign post found or set.

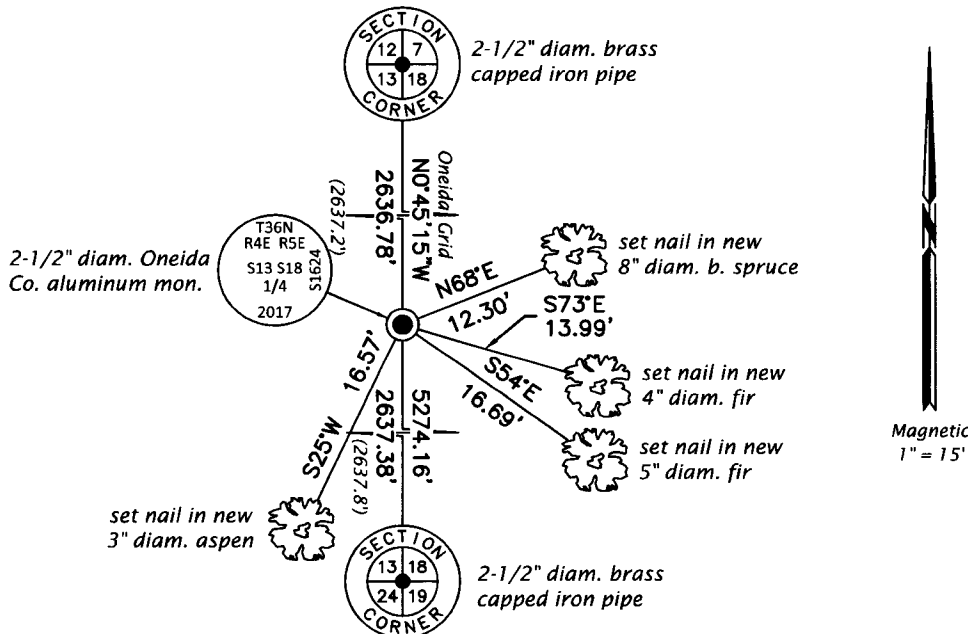
December 11, 1934: Notes in Old Fieldbook no. 15 on page 15 by Lytle indicate he found the corner to be lost and set a post at the midpoint of the section line with no accessories.

May 27, 1957: OCS Map No. C-399 by Genisot Engineering indicates corner is marked by an iron pipe witnessed by: aspen 4" S19°E, 14.5'; spruce 4" N78°E, 42.7'.

June 6, 2017: Jeff Austin visited the corner and found no evidence of the iron pipe or bearing trees by Genisot. As the distance of the section line compares favorably with the measurement by Genisot (5275.0'), the corner was positioned proportionate measure based on Genisot's record as shown below. At the corner point, a 2-1/2" diam., 30" long aluminum pipe with a 3-1/4" diam. Oneida Co. aluminum cap projecting 2" above the ground surface was set. Accessories were established as shown below. A white vinyl sign post was set South, 0.9 ft.

The coordinate value shown has been verified by at least one of the following methods: 1) comparison to a previously GPS determined published value; 2) the value is the average of two or more GPS observations at a markedly different time; 3) one or more distances were measured back to the GPS observed corner from temporary GPS observed offset locations.

(c)(d)(e) Plan view of corner with ties to at least 4 witness monuments. If in disagreement with previously established corner, show the distances between the two corners and also indicate the ties to the disputed.

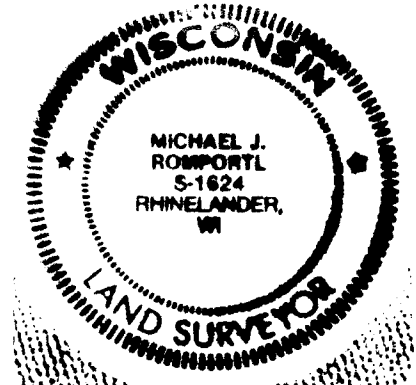


REGISTER OF DEEDS OFFICE
 ONEIDA COUNTY
 FILED

JUL 11 2017

AT _____ O'CLOCK _____ M
 KYLE J. FRANSON
 REGISTER OF DEEDS

Magnetic
 1" = 15'



(i) I, Michael J. Romportl, Professional Land Surveyor No. S-1624, hereby certify that the corner location on this record was determined by me or under my direction and control and that this U.S. Public Land Survey Monument Record is correct and complete to the best of my knowledge and belief.

Michael J Romportl
 Signature

7/11/2017
 Date