

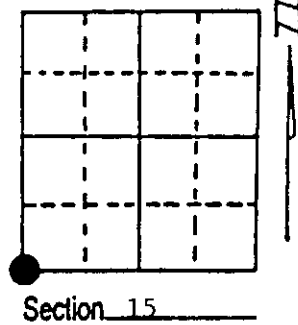
U.S. PUBLIC LAND SURVEY MONUMENT RECORD

Note: This form is intended and designed to fulfill all requirements of Wisconsin Administrative Code, Chapter A-E 7.08 U.S. Public Land Survey Monument Record (3) (a) (b) (c) (d) (e) (f) (g) (h) (i). An additional sheet may be added if necessary to conform with said requirements.

(a) Corner location: Township 36 North
 Range 4 East/West

Town/City/Village Lynne

County Oneida



(b) (f) (g) (h) Description of monument found at this corner and if it was accepted, state all evidence (material, testimonial, occupational, plats, records, other monuments) used as a basis for accepting. If not accepted or if nothing was found, state evidence used as basis for establishing location. If reestablished through lost corner proportionate methods, indicate all monuments, distances and directions used to establish. Indicate type of monument found or set and sign post.

6/1865 - Edward D. Palmer established this corner and set a wood post with four BTs:
 10" Hemlock, N63°E, 18 Links 8" Fir, S38°W, 12 Links
 15" Hemlock, S72°E, 36 Links 12" Hemlock, N45°W, 11 Links

7/29/1915 - D. H. Vaughan found stumps of original BTs. He set a new post and two BTs:
 28" W. Pine Stump, S85½°E, 32½ Links
 24" W. Pine Stump, N82°W, 75 Links

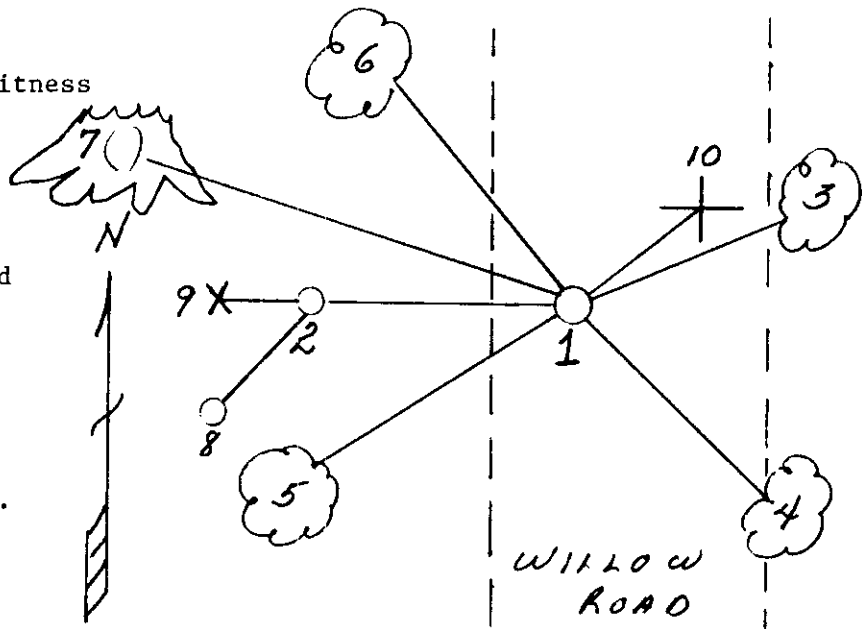
Unknown time and party: Set a 2" x 60" iron pipe with brass cap as a Witness Corner to the Section Corner, which falls in the highway.

10/17/1991 - Milo E. Stefan found Witness Corner broken off. I restored corner from Vaughan's White Pine Stump. We set a railroad spike in road surface and new Witness Corner.

(c) (d) (e) Plan view of corner with ties to at least 4 witness monuments. If in disagreement with previously established corner, show the distances between the two corners and also indicate the ties to the disputed corner.

- 1) Railroad spike.
- 2) 2" x 30" aluminum monument for Witness Corner, West, 30.00'.
- 3) 3" Red Maple, N62°E, 61.13'.
- 4) 3" Red Maple, S46°E, 60.66'.
- 5) 8" Red Maple, S66°W, 84.24'.
- 6) 8" Red Maple, N52°W, 98.61'.
- 7) Large Pine Stump rotted to ground line, N82°W, 49½'.
- 8) U.S.G.S. Bench Mark #TTXT-1939, N30°E, 4.47' to Witness Corner.
- 9) Plastic sign post, West, 1.0'.
- 10) Painted target, N60°E, 11.50'.

Distances to nail in side of BTs.
 Stump blaze scribed "BT".



(i) I, Milo E. Stefan
 (type or print name) certify that the corner location on this record was determined by me or under my direction and control and that this U.S. Public Land Survey Monument Record is correct and complete to the best of my knowledge and belief.

Milo E. Stefan November 6, 1991
 Signature Date



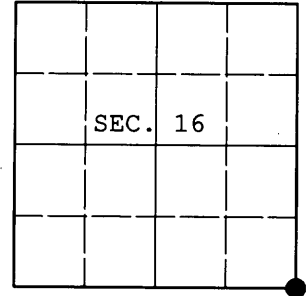
Index No. N-13

Stamp 3604160000

U.S. PUBLIC LAND SURVEY MONUMENT RECORD

Note: This form is intended and designed to fulfill all requirements of Wisconsin Administrative Code, Chapter A-E 7.08 U.S. Public Land Survey Monument Record (3) (a) (b) (c) (d) (e) (f) (g) (h) (i). An additional sheet may be added if necessary to conform with said requirements.

(a) CORNER LOCATION: Plane Coordinates
 Cor. of Secs. 15, 16, 21 & 22 N:
 Township 36 North E:
 Range 4 East of the 4th P.M. Datum:
 Town of Lynne County of Oneida



(b) HISTORY OF ORIGINAL CORNER ESTABLISHMENT

Original Surveyor: Edward Palmer Original Accessories:
 Date of Survey: Commenced May, 1865 hemlock 10" N63°E, 18 lks.
 Completed June, 1865 hemlock 15" S72°E, 36 lks.
 fir 8" S38°W, 12 lks.
 hemlock 12" N45°W, 11 lks.

(b) (f) (g) (h) Description of monument found at this corner and if it was accepted, state all evidence (material, testimonial, occupational, plats, records, other monuments) used as a basis for accepting. If not accepted or if nothing was found, state evidence used as basis for establishing location. If re-established through lost corner proportionate methods, indicate all monuments, distances and directions used to establish. Indicate type of monument and sign post found or set.

NOTE: This is a perpetuation of a previous USPLS Monument Record by Milo E. Stefan, RLS dated November 6, 1991 and filed in the office of the Oneida County Register of Deeds. A complete history of the corner can be found on the previous monument record. I accept the previous location as a true and faithful perpetuation or reestablishment of the original corner location and further perpetuate it as follows.

November 30, 2011: I found and accepted a Berntsen DuraNail 5 ft. West of the centerline of Willow Road. I found or established accessories as shown below and set a white plastic sign post adjacent to each reference monument.

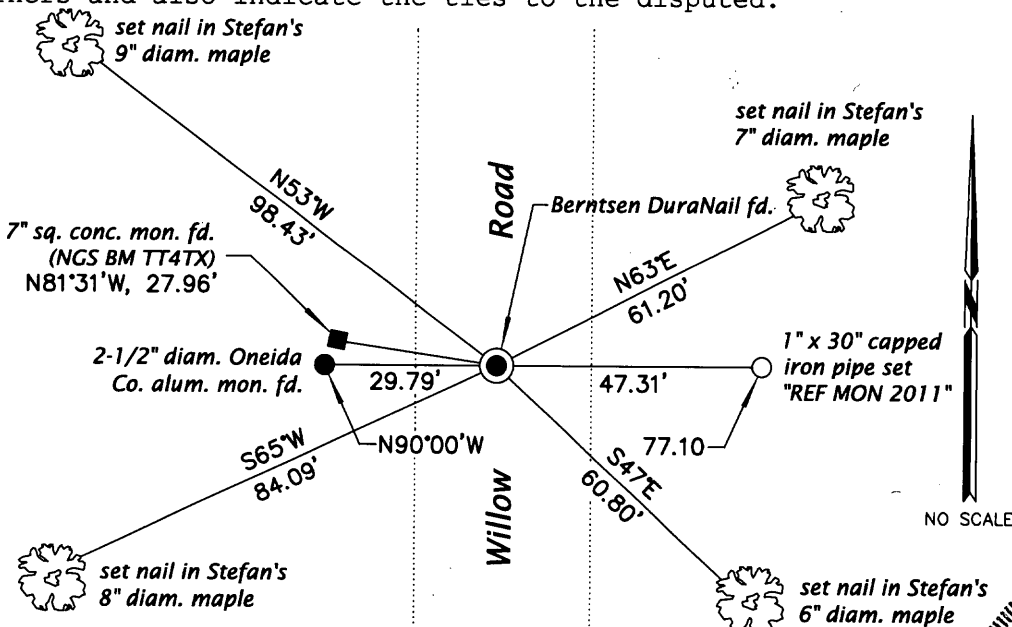
REGISTER OF DEEDS OFFICE
 ONEIDA COUNTY

FILED

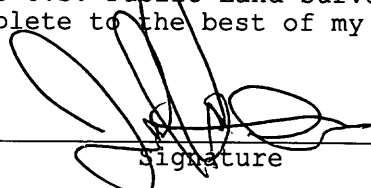
JAN 16 2012

AT _____ O'CLOCK _____ M
THOMAS H. LEIGHTON
 REGISTER OF DEEDS

(c) (d) (e) Plan view of corner with ties to at least 4 witness monuments. If in disagreement with previously established corner, show the distances between the two corners and also indicate the ties to the disputed.



(i) I, Jeffrey W. Austin, Registered Land Surveyor No. S-1885, hereby certify that the corner location on this record was determined by me or under my direction and control and that this U.S. Public Land Survey Monument Record is correct and complete to the best of my knowledge and belief.


 Signature

DEC. 31, 2011
 Date



3604160000 (INDEX NO. N-13)