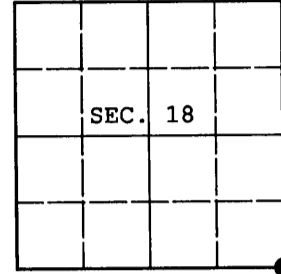


**U.S. PUBLIC LAND SURVEY MONUMENT RECORD**

Note: This form is intended and designed to fulfill all requirements of Wisconsin Administrative Code, Chapter A-E 7.08 U.S. Public Land Survey Monument Record (3) (a) (b) (c) (d) (e) (f) (g) (h) (i). An additional sheet may be added if necessary to conform with said requirements.

(a) CORNER LOCATION: Oneida County Coordinates  
 Cor. of Secs. 17, 18, 19 & 20 N: 150,532.417 USft  
 Township 36 North E: 107,449.908 USft  
 Range 4 East of the 4th P.M. Datum: NAD 1983(1991)  
 Town of Lynne County of Oneida



(b) HISTORY OF ORIGINAL CORNER ESTABLISHMENT

Original Surveyor: Edward D. Palmer Original Accessories:  
 Date of Survey: Commenced: May 27, 1865 ash 10" N45°W, 20 lks.  
 Completed: June 4, 1865 sugar 9" N50°E, 50 lks.  
 sugar 12" S34°E, 46 lks.  
 hemlock 18" S35°W, 35 lks.

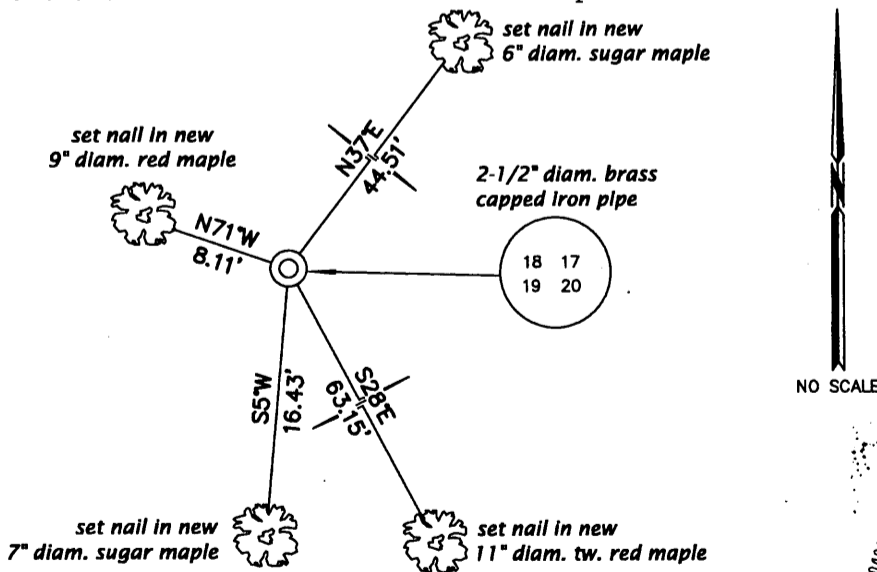
(b) (f) (g) (h) Description of monument found at this corner and if it was accepted, state all evidence (material, testimonial, occupational, plats, records, other monuments) used as a basis for accepting. If not accepted or if nothing was found, state evidence used as basis for establishing location. If re-established through lost corner proportionate methods, indicate all monuments, distances and directions used to establish. Indicate type of monument and sign post found or set.

June 15, 1921: Notes by Vaughan in book 9 on page 37 indicate he recovered the original corner and one of the sugar bearing trees.

November 14, 2012: A 2-1/2" diam. iron pipe with 2-1/2" diam. brass cap projecting 24" above a collar of stone was recovered and accepted. The stump hole of one of the GLO bearing trees was recovered bearing S35°W, 23 ft. dist. The distance from this corner to 3604300000 agrees with Vaughan's distance very favorably. Accessories were established as shown below and a white plastic sign post was set Northwest 1 ft. dist.

The coordinates shown were derived from two independent RTK observations of the corner point and are based on the WISCORS network.

(c) (d) (e) Plan view of corner with ties to at least 4 witness monuments. If in disagreement with previously established corner, show the distances between the two corners and also indicate the ties to the disputed.

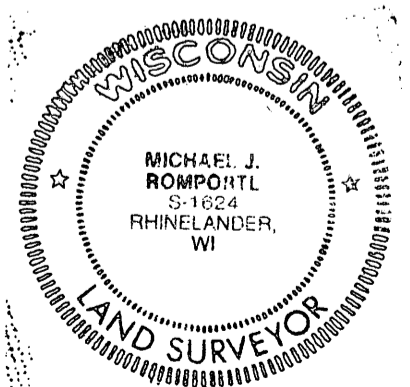


REGISTER OF DEEDS OFFICE  
 ONEIDA COUNTY  
 FILED

APR 15 2013

AT \_\_\_\_\_ O'CLOCK \_\_\_\_\_ M  
 KYLE J. FRANSON  
 REGISTER OF DEEDS

(i) I, Michael J. Romportl, Registered Land Surveyor No. S-1624, hereby certify that the corner location on this record was determined by me or under my direction and control and that this U.S. Public Land Survey Monument Record is correct and complete to the best of my knowledge and belief.



Michael J Romportl 2/12/2013  
 Signature Date

3604180000 (INDEX NO. N-5)