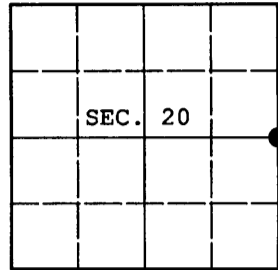


U.S. PUBLIC LAND SURVEY MONUMENT RECORD

Note: This form is intended and designed to fulfill all requirements of Wisconsin Administrative Code, Chapter A-E 7.08 U.S. Public Land Survey Monument Record (3) (a) (b) (c) (d) (e) (f) (g) (h) (i). An additional sheet may be added if necessary to conform with said requirements.

(a) CORNER LOCATION: Oneida County Coordinates
 1/4 Cor. of Secs. 20 & 21 N: 148,030.890 USft
 Township 36 North E: 112,783.582 USft
 Range 4 East of the 4th P.M. Datum: NAD 1983(1991)
 Town of Lynne County of Oneida



(b) HISTORY OF ORIGINAL CORNER ESTABLISHMENT

Original Surveyor: Edward D. Palmer Original Accessories:
 Date of Survey: Commenced: May 27, 1865 fir 6" N70°E, 6 lks.
 Completed: June 4, 1865 spruce 7" S76°W, 14 lks.

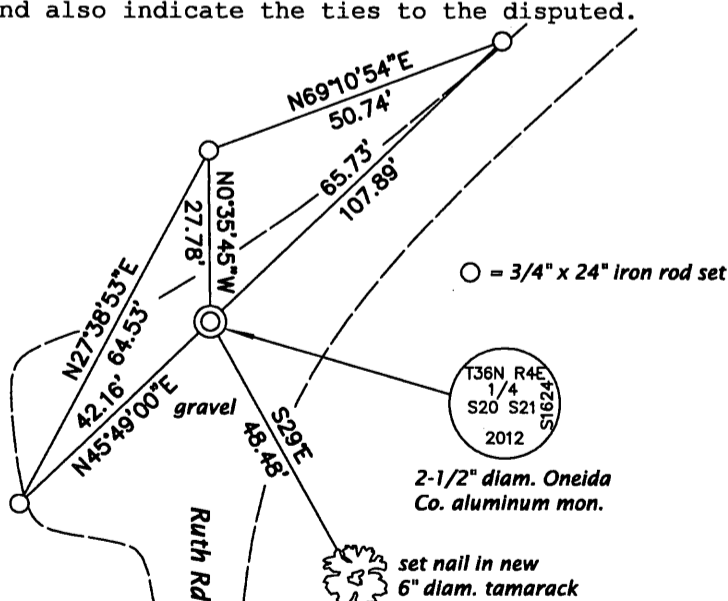
(b) (f) (g) (h) Description of monument found at this corner and if it was accepted, state all evidence (material, testimonial, occupational, plats, records, other monuments) used as a basis for accepting. If not accepted or if nothing was found, state evidence used as basis for establishing location. If re-established through lost corner proportionate methods, indicate all monuments, distances and directions used to establish. Indicate type of monument and sign post found or set.

July 10, 1908: Notes by Vaughan in fieldbook 6 on page 37 indicate he was unable to recover the original corner and set it by proportionate measure. He indicates "Scott" was to place an iron pin at the corner point.

November 5, 2012: An extensive search for evidence of the General Land Office survey and any subsequent resurveys mentioned above was performed. Having found none, the corner was positioned at the intersection of the remains of a downed wire fence to the East and the centerline of Ruth Road. The wire is grown into several large tamarack trees to a substantial degree. The distance from this corner to 3604290000 agrees with Vaughan's distance very favorably. At the corner point a 2-1/2" diam., 30" long aluminum pipe with 3-1/4" diam. Oneida County aluminum cap was set 8" beneath the ground surface. Accessories were established as shown below and a white plastic sign post was set adjacent to the North reference monument.

The coordinates shown were derived from two independent RTK observations of the corner point and are based on the WISCORS network.

(c) (d) (e) Plan view of corner with ties to at least 4 witness monuments. If in disagreement with previously established corner, show the distances between the two corners and also indicate the ties to the disputed.



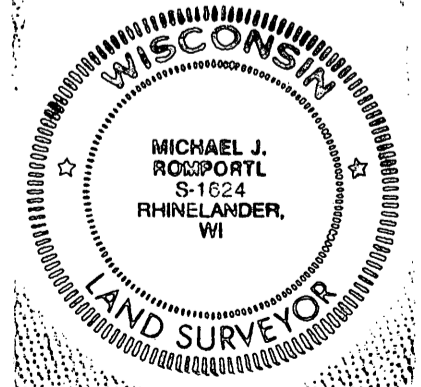
ONEIDA CO. GRID

REGISTER OF DEEDS OFFICE
 ONEIDA COUNTY
 FILED

APR 15 2013

AT _____ O'CLOCK _____ M
 KYLE J. FRANSON
 REGISTER OF DEEDS

NO SCALE



(i) I, Michael J. Romportl, Registered Land Surveyor No. S-1624, hereby certify that the corner location on this record was determined by me or under my direction and control and that this U.S. Public Land Survey Monument Record is correct and complete to the best of my knowledge and belief.

Michael J. Romportl
 Signature

2/12/2013
 Date

3604202000 (INDEX NO. P-9)