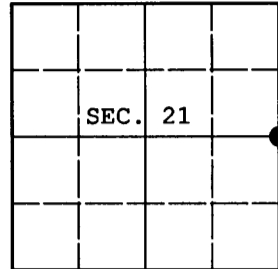


U.S. PUBLIC LAND SURVEY MONUMENT RECORD

Note: This form is intended and designed to fulfill all requirements of Wisconsin Administrative Code, Chapter A-E 7.08 U.S. Public Land Survey Monument Record (3) (a) (b) (c) (d) (e) (f) (g) (h) (i). An additional sheet may be added if necessary to conform with said requirements.

(a) CORNER LOCATION: Oneida County Coordinates
1/4 Cor. of Secs. 21 & 22 N: 148,029.807 USft
Township 36 North E: 118,219.625 USft
Range 4 East of the 4th P.M. Datum: NAD 1983(1991)
Town of Lynne County of Oneida



(b) HISTORY OF ORIGINAL CORNER ESTABLISHMENT

Original Surveyor: Edward D. Palmer Original Accessories:
Date of Survey: Commenced: May 27, 1865 birch 6" N42°W, 7 lks.
Completed: June 4, 1865 hemlock 16" S81°E, 22 lks.

(b) (f) (g) (h) Description of monument found at this corner and if it was accepted, state all evidence (material, testimonial, occupational, plats, records, other monuments) used as a basis for accepting. If not accepted or if nothing was found, state evidence used as basis for establishing location. If re-established through lost corner proportionate methods, indicate all monuments, distances and directions used to establish. Indicate type of monument and sign post found or set.

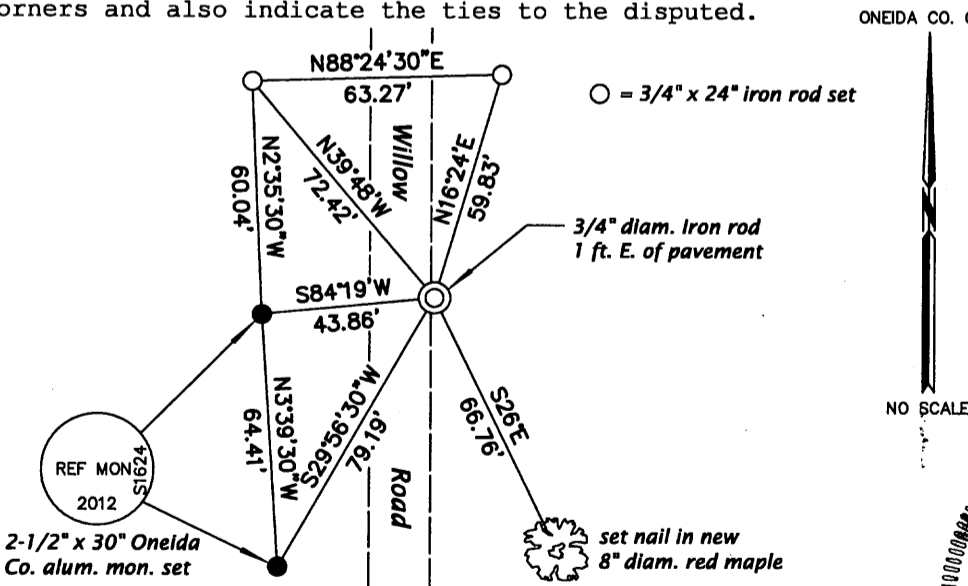
July 29, 1915: Notes by Vaughan in fieldbook 8 on page 19 indicate he was unable to find the original corner. He set a wood post on the original marked line which he followed from the South and equidistant from the controlling section corners: W. pine stp. 22 S61-1/2°W, 34-1/2. Vaughan's work was performed for the Town of Lynne to guide the alignment of Willow Road.

December 5, 2012: An extensive search for evidence of the General Land Office survey and any subsequent resurveys mentioned above was performed. Having found none, the corner was positioned equidistant from the controlling section corners and on the centerline of Willow Road from the South. At the corner point a 3/4" diam., 24" long iron rod was set 8" beneath the East shoulder of the road. Accessories were established as shown below and white plastic sign posts were set adjacent to the SW and NE reference monuments.

The controlling corners, 3604160000 and 3604210000, bear N4°04'52"W, 2674.33' and S1°05'59"W, 2674.33' respectively. (Vaughan: 40.44 ch.)

The coordinates shown were derived from two independent RTK observations of the corner point and are based on the WISCORS network.

(c) (d) (e) Plan view of corner with ties to at least 4 witness monuments. If in disagreement with previously established corner, show the distances between the two corners and also indicate the ties to the disputed.

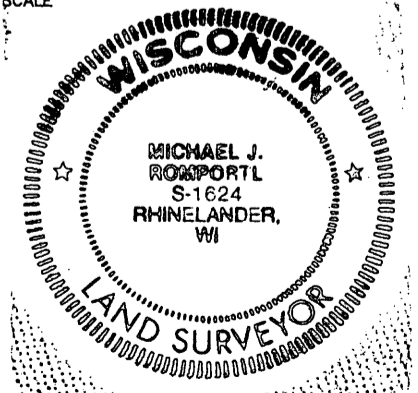


REGISTER OF DEEDS OFFICE ONEIDA COUNTY FILED

APR 15 2013

AT O'CLOCK M KYLE J. FRANSON REGISTER OF DEEDS

NO SCALE



(i) I, Michael J. Romportl, Registered Land Surveyor No. S-1624, hereby certify that the corner location on this record was determined by me or under my direction and control and that this U.S. Public Land Survey Monument Record is correct and complete to the best of my knowledge and belief.

Signature of Michael J. Romportl

Date: 2/12/2013

3604212000 (INDEX NO. P-13)