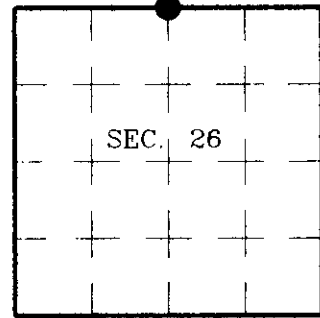


U.S. PUBLIC LAND SURVEY MONUMENT RECORD

Note: This form is intended and designed to fulfill all requirements of Wisconsin Administrative Code, Chapter A-E 7.08 U.S. Public Land Survey Monument Record (3)(a)(b)(c)(d)(e)(f)(g)(h)(i). An additional sheet may be added if necessary to conform with said requirements.

(a) CORNER LOCATION: State Plane Coordinates
 North 1/4 Corner of Section 26 X
 Township 36 North Y
 Range 4 East Datum Base
 Town of Lynne County of Oneida



(b) HISTORY OF ORIGINAL CORNER ESTABLISHMENT

Original Surveyor: Edward Palmer
 Date of Survey: Commenced May, 1865
 Completed June, 1865

Original B.T.s

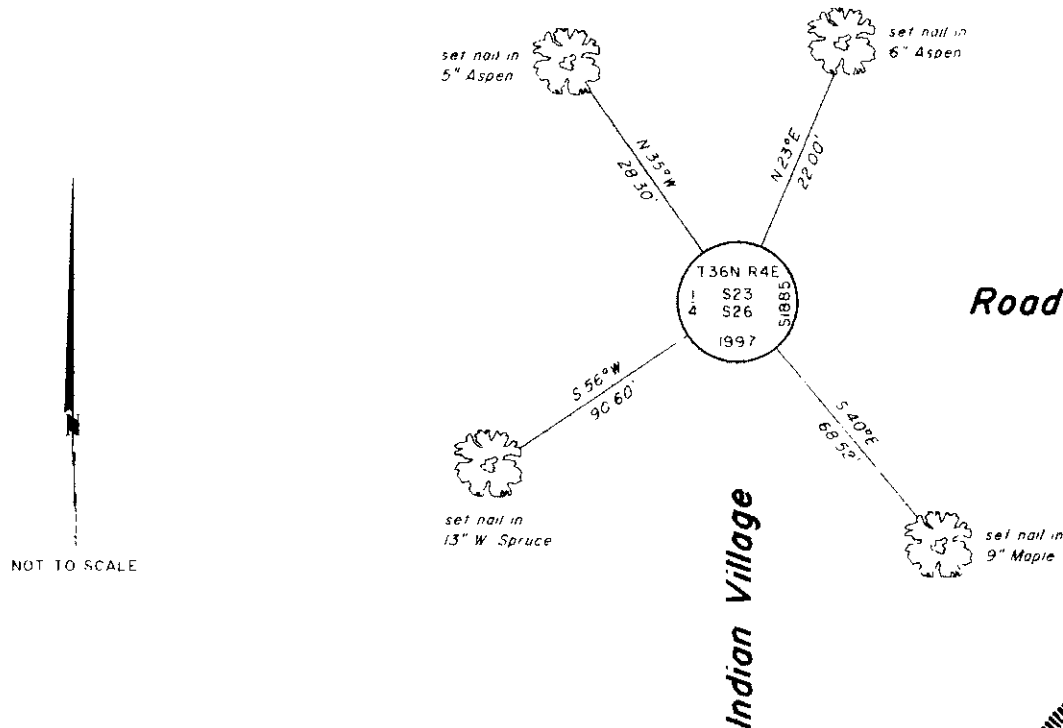
Sugar 12' N20°E, 20 lks.
 Birch 10' S45°E, 24 lks.

(b)(f)(g)(h) Description of monument found at this corner and if it was accepted, state all evidence (material, testimonial, occupational, plats, records, other monuments) used as a basis for accepting. If not accepted or if nothing was found, state evidence used as basis for establishing location. If reestablished through lost corner proportionate methods, indicate all monuments, distances and directions used to establish. Indicate type of monument and sign post found or set.

1924: C.D. Vaughan found corner set by D.H.V. from original. New BTs Hemlock 10' N29-1/2°W, 90-1/2 lks. and Hemlock 6' S74°E, 106 lks.

October 8, 1997: I was unable to recover definitive evidence of Vaughan's corner location. I established this corner at the extension of the centerlines of Indian Village Road. It is apparent that Vaughan's survey was relied on to construct this road. This location is supported by other corners in Section 26. I set a 2-1/2" dia., 30" long aluminum pipe with 3-1/4" dia. Oneida Co. aluminum cap 7" below grade and marked as shown below. I established accessories as shown below and set a plastic sign post West, 1-1/2 feet.

(c)(d)(e) Plan view of corner with ties to at least 4 witness monuments. If in disagreement with previously established corner, show the distances between the two corners and also indicate the ties to the disputed.



(i) I, Jeffrey W. Austin, Registered Land Surveyor S-1885, hereby certify that the corner location on this record was determined by me or under my direction and control and that this U.S. Public Land Survey Monument Record is correct and complete to the best of my knowledge and belief.

Signature

Date



INDEX NO. R-19

3604230020