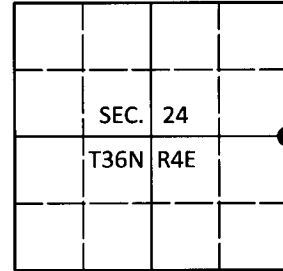


U.S. PUBLIC LAND SURVEY MONUMENT RECORD

Note: This form is intended and designed to fulfill all requirements of Wisconsin Administrative Code, Chapter A-E 7.08 U.S. Public Land Survey Monument Record (3)(a-i).

(a) CORNER LOCATION
 1/4 Cor. of Secs. 19 & 24
 Township 36 North
 Range 4 & 5 East of the 4th P.M.
 Town of Lynne/Little Rice
 County of Oneida

WISCRS - Oneida County
 N: 148,047.99 USft
 E: 133,831.79 USft
 Datum: NAD 83(2011)
 GNSS Method: Real-Time Network
 GNSS Control: WISCRS VRS



(b) HISTORY OF ORIGINAL CORNER ESTABLISHMENT

Original Surveyor: Alfred Millard

Original Accessories:

Date of Survey Commenced: Aug., 1860
 Completed: Sep., 1860

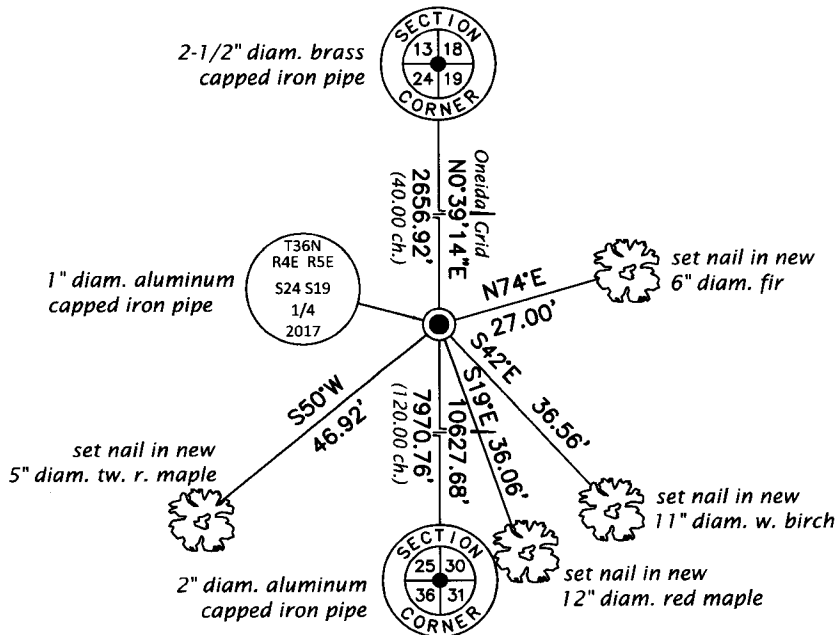
Tamarack 12 S52°W, 11 lks.
 Tamarack 12 N32°E, 15 lks.

(b)(f)(g)(h) Description of monument found at this corner and if it was accepted, state all evidence (material, testimonial, occupational, plats, records, other monuments) used as a basis for accepting. If not accepted or if nothing was found, state evidence used as basis for establishing location. If re-established through lost corner proportionate methods, indicate all monuments, distances and directions used to establish. Indicate type of monument and sign post found or set.

June 23, 2017: Jeff Austin thoroughly searched this corner along with 3604240000 and 3604252000 and found them all to be lost corners with no evidence of the GLO survey or any subsequent survey in existence. At this corner, there is an axed cedar standing dead that bears S65°W, 29 ft. The marks on the tree face the proportioned location well. The distance North to the edge of lowlands is 15 ft. fitting reasonably well with the GLO measurement. As detailed below, a 1" diam., 30" long iron pipe with a 2" diam. aluminum cap flush with the ground surface was set at the proportionate distance between controlling corners. Accessories were established as shown below. A white vinyl sign post was set Northwest, 0.7 ft.

The coordinate value shown has been verified by at least one of the following methods: 1) comparison to a previously GPS determined published value; 2) the value is the average of two or more GPS observations at a markedly different time; 3) one or more distances were measured back to the GPS observed corner from temporary GPS observed offset locations.

(c)(d)(e) Plan view of corner with ties to at least 4 witness monuments. If in disagreement with previously established corner, show the distances between the two corners and also indicate the ties to the disputed.

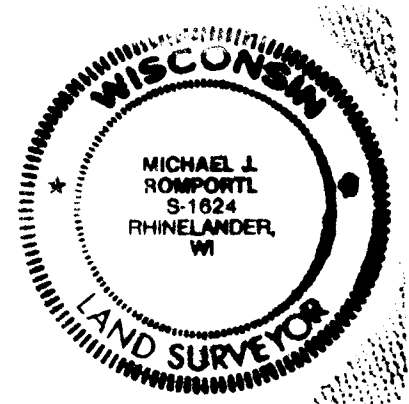


REGISTER OF DEEDS OFFICE
 ONEIDA COUNTY
 FILED

JUL 11 2017

AT _____ O'CLOCK _____ M
 KYLE J. FRANSON
 REGISTER OF DEEDS

Magnetic
 1" = 30'



(i) I, Michael J. Romportl, Professional Land Surveyor No. S-1624, hereby certify that the corner location on this record was determined by me or under my direction and control and that this U.S. Public Land Survey Monument Record is correct and complete to the best of my knowledge and belief.

Michael J Romportl
 Signature

7/11/2017
 Date

3604242000 (INDEX NO. P-25)