

U.S. PUBLIC LAND SURVEY MONUMENT RECORD

Note: This form is intended and designed to fulfill all requirements of Wisconsin Administrative Code, Chapter A-E 7.08 U.S. Public Land Survey Monument Record (3) (a) (b) (c) (d) (e) (f) (g) (h) (i). An additional sheet may be added if necessary to conform with said requirements.

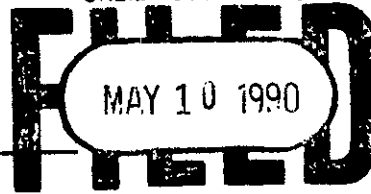
(a) Corner location: Township 36 North

Range 5 East

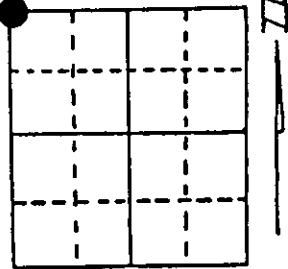
Town of Little Rice

County of Oneida

REGISTER OF DEEDS OFFICE
ONEIDA COUNTY, WIS.



At O'Clock M
THOMAS H. LEIGHTON
REGISTER OF DEEDS



Section 31

(b) (f) (g) (h) Description of monument found at this corner and if it was accepted, state all evidence (material, testimonial, occupational, plats, records, other monuments) used as a basis for accepting. If not accepted or if nothing was found, state evidence used as basis for establishing location. If reestablished through lost corner proportionate methods, indicate all monuments, distances and directions used to establish. Indicate type of monument found or set and sign post.

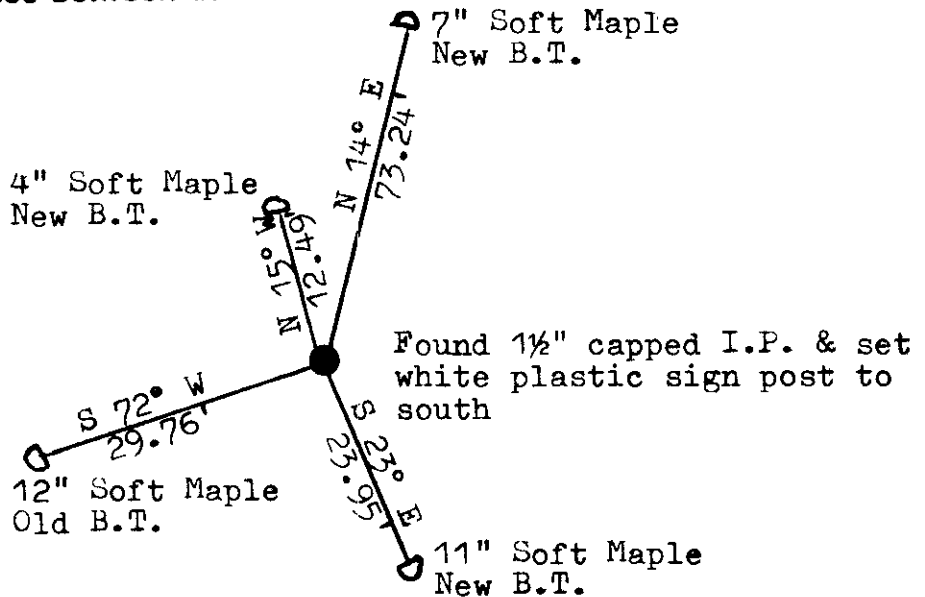
September 1860, Orig. cor. estab. by Alfred Millard North between 31 & 36....
80.00 set post cor. to Sections 30, 31, 25 & 36, B.T.s Y. Birch 12 N 40 W 13,
Y. Birch 16 S 50 W 24, Y. Birch 16 S 12 E 17 & Hemlock 10 N 70 E 41

March 1990, I found a 1½" unstamped capped iron pipe marking the location of this corner. The capped portion is 2½" above ground. The corner is on the northwest side of the top of a hill, with the ground sloping to the north & west beyond the corner. I accepted the pipe and witnessed it as shown below. I stamped the cap with the appropriate section, township & range numbering.

(c) (d) (e) Plan view of corner with ties to at least 4 witness monuments. If in disagreement with previously established corner, show the distances between the two corners and also indicate the ties to the disputed corner.



Bearings magnetic
Distance to 6"
nail in side
of tree
No scale



(i) I, Lester J. Schmit R.L.S., 1192
(type or print name) certify that the corner location on this record was determined by me or under my direction and control and that this U.S. Public Land Survey Monument Record is correct and complete to the best of my knowledge and belief.

Lester J. Schmit
Signature

3 May 1990
Date



Index No. - 1

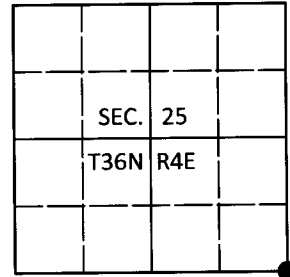
3604250000

U.S. PUBLIC LAND SURVEY MONUMENT RECORD

Note: This form is intended and designed to fulfill all requirements of Wisconsin Administrative Code, Chapter A-E 7.08 U.S. Public Land Survey Monument Record (3)(a-i).

(a) CORNER LOCATION
 Cor. of Secs. 25, 30, 31 & 36
 Township 36 North
 Range 4 & 5 East of the 4th P.M.
 Town of Lynne/Little Rice
 County of Oneida

WISCORS - Oneida County
 N: 140,077.76 USft
 E: 133,740.81 USft
 Datum: NAD 83(2011)
 GNSS Method: Static
 GNSS Control: WISCORS VRS



(b) HISTORY OF ORIGINAL CORNER ESTABLISHMENT

Original Surveyor: _____ Original Accessories: _____

Date of Survey _____ Commenced: _____
 Completed: _____

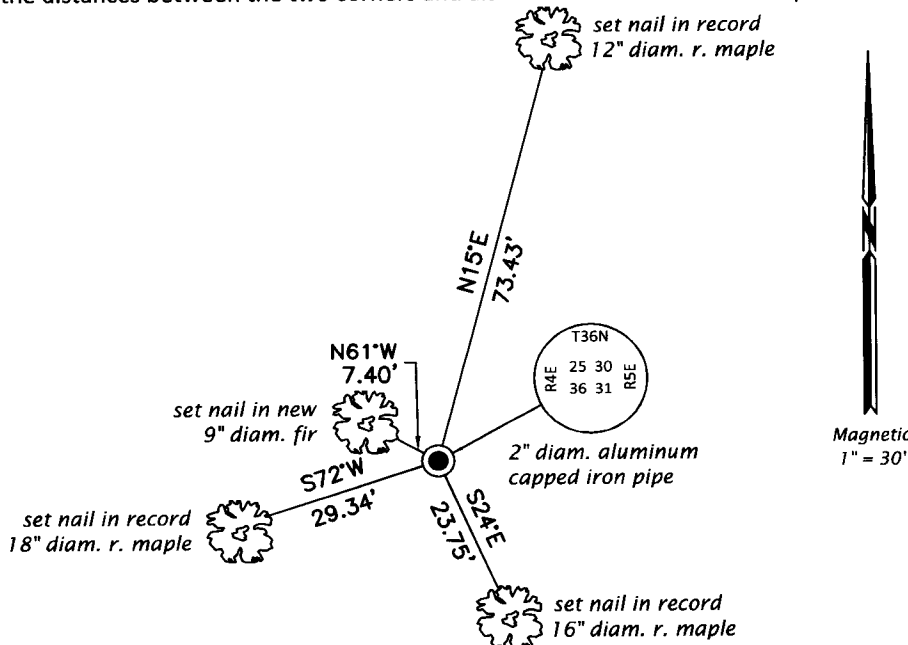
(b)(f)(g)(h) Description of monument found at this corner and if it was accepted, state all evidence (material, testimonial, occupational, plats, records, other monuments) used as a basis for accepting. If not accepted or if nothing was found, state evidence used as basis for establishing location. If re-established through lost corner proportionate methods, indicate all monuments, distances and directions used to establish. Indicate type of monument and sign post found or set.

This is a perpetuation of a previous USPLS Monument Record by Lester J. Schmit, RLS dated May 3, 1990 and filed in the office of the Oneida County Register of Deeds. A complete history of the corner can be found on the previous monument record. I accept the previous location as a true and faithful perpetuation or reestablishment of the original corner location and further perpetuate it as follows.

June 6, 2017: Jeff Austin visited the corner and recovered the record monument, a 2" diam. iron pipe with a 3-1/4" diam. aluminum cap projecting 24" above the ground surface. Schmit's 4" maple is now a stump. Accessories were found or established as shown below. A white vinyl sign post was found Northwest, 1 ft.

The coordinate value shown has been verified by at least one of the following methods: 1) comparison to a previously GPS determined published value; 2) the value is the average of two or more GPS observations at a markedly different time; 3) one or more distances were measured back to the GPS observed corner from temporary GPS observed offset locations.

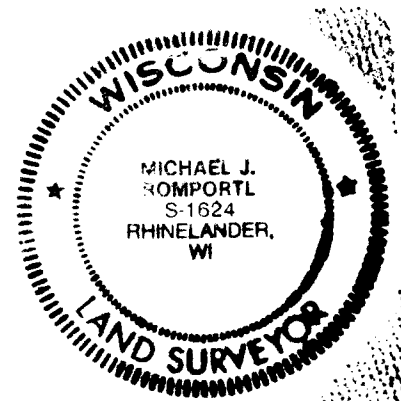
(c)(d)(e) Plan view of corner with ties to at least 4 witness monuments. If in disagreement with previously established corner, show the distances between the two corners and also indicate the ties to the disputed.



REGISTER OF DEEDS OFFICE
 ONEIDA COUNTY
 FILED

JUL 11 2017

AT _____ O'CLOCK _____ M
 KYLE J. FRANSON
 REGISTER OF DEEDS



(i) I, Michael J. Romportl, Professional Land Surveyor No. S-1624, hereby certify that the corner location on this record was determined by me or under my direction and control and that this U.S. Public Land Survey Monument Record is correct and complete to the best of my knowledge and belief.

Michael J. Romportl 7/11/2017
 Signature Date

3604250000 (INDEX NO. V-25)