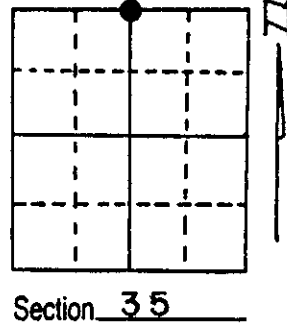


U.S. PUBLIC LAND SURVEY MONUMENT RECORD

Note: This form is intended and designed to fulfill all requirements of Wisconsin Administrative Code, Chapter A-E 5.02, U.S. Public Land Survey Monument Record (3) (a) (b) (c) (d) (e) (f) (g) (h) (i). An additional sheet may be added if necessary to conform with said requirements.

(a) Corner location: Township 36 North
 Range 4 East
 Town/City/Village Lynne
 County Oneida



(b) (f) (g) (h) Description of monument found at this corner and if it was accepted, state all evidence (material, testimonial, occupational, plats, records, other monuments) used as a basis for accepting. If not accepted or if nothing was found, state evidence used as basis for establishing location. If reestablished through lost corner proportionate methods, indicate all monuments, distances and directions used to establish.

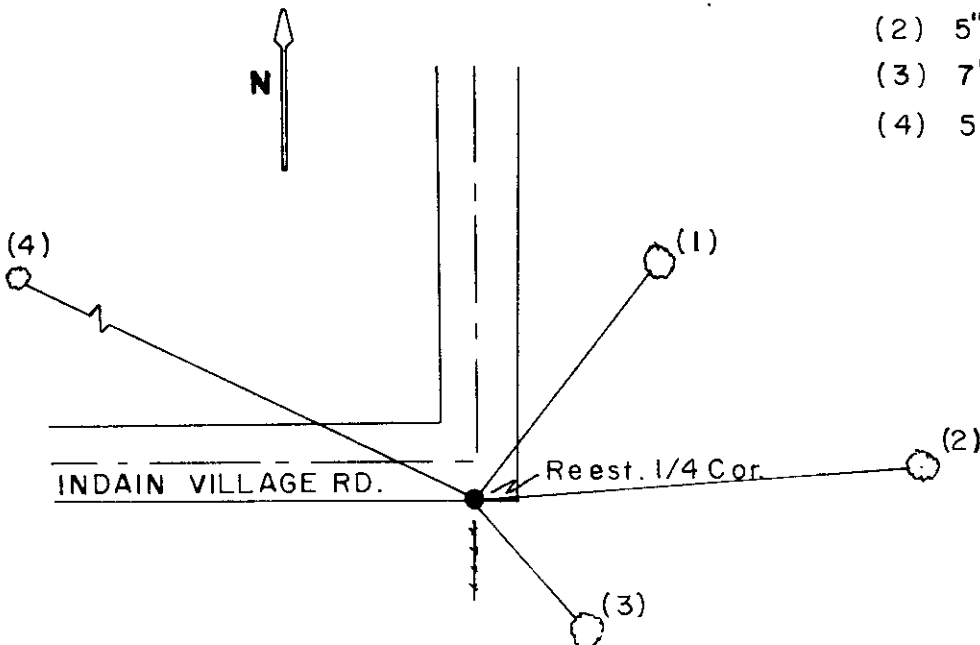
In June of 1937, V.A. Maine, Registered Land Surveyor ran a survey line between Sections 26 and 35, T36N, R4E. Running East on town road from Northwest Section Corner 35 at 38.23 chs. he recovered C.D. Vaughs 1/4 Corner stake point and two of his BTs. He also recovered Vaugh's E-1/16 on the North line of Section 35.

Maine's recorded distance from Northeast Section Corner to N-1/4 Corner Section 35 was 2526.28'. Set a temporary point for 1/4 Corner using centerline of town road West and North (Maine notes this is N-S 1/4 line) old fence line South. Using the Northeast Section Corner and E-1/16 for alignment and distance arrived at a point inches from my temporary point. The E-1/16 is not at a intermediate distance but in tolerance of Maine's distance 2.0+.

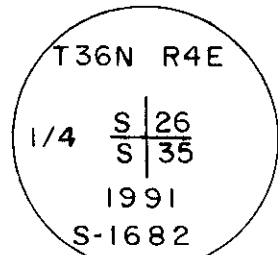
At the 1/4 Corner position we recovered a 2-1/2" iron pipe with brass cap marked: Wisconsin Conservation Dept. Monument was laying down and bent. Road right of way construction has removed it from the original position.

(c) (d) (e) Plan view of corner with ties to at least 4 witness monuments. If in disagreement with previously established corner, show the distances between the two corners and also indicate the ties to the disputed corner.

Monument 5" below surface.

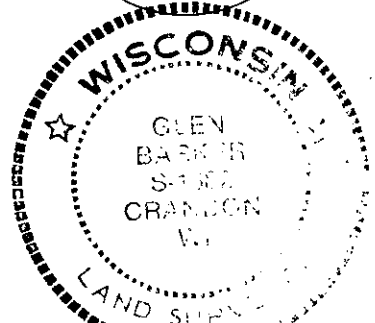


- (1) 6" Sugar Maple N37°E 62.16'
- (2) 5" Elm N86°E 93.42'
- (3) 7" Sugar Maple S39°E 37.22'
- (4) 5" Sugar Maple N65°W 136.90'



(i) I, Glen Barker
 (type or print name) certify that the corner location on this record was determined by me or under my direction and control and that this U.S. Public Land Survey Monument Record is correct and complete to the best of my knowledge and belief.

Glen Barker Signature 11/4/91 Date



3604260020

Index No. V-19

Original corner established by Edward D. Palmer, Gov't Deputy Surveyor in 1865, from which 28" Hemlock bears N19W, 16 lks. and 12" Sugar bears S10E, 20 lks.

REGISTER OF DEEDS OFFICE
ONEIDA COUNTY, WIS.
FILED
DEC 28 1991
At _____ O'Clock _____ M
THOMAS H. LEIGHTON
REGISTER OF DEEDS

