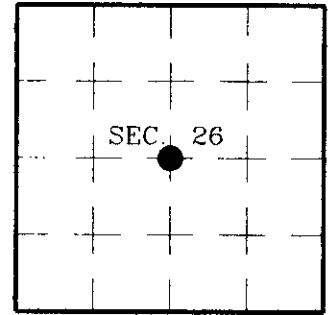


# U.S. PUBLIC LAND SURVEY MONUMENT RECORD

Note: This form is intended and designed to fulfill all requirements of Wisconsin Administrative Code, Chapter A-E 7.08 U.S. Public Land Survey Monument Record (3)(a)(b)(c)(d)(e)(f)(g)(h)(i). An additional sheet may be added if necessary to conform with said requirements.

(a) CORNER LOCATION: State Plane Coordinates  
 Center 1/4 Corner of Section 26 X  
 Township 36 North Y  
 Range 4 East Datum Base  
 Town of Lynne County of Oneida



(b) HISTORY OF ORIGINAL CORNER ESTABLISHMENT

Original Surveyor: C.D. Vaughan  
 Date of Survey: Commenced 1924  
 Completed 1924

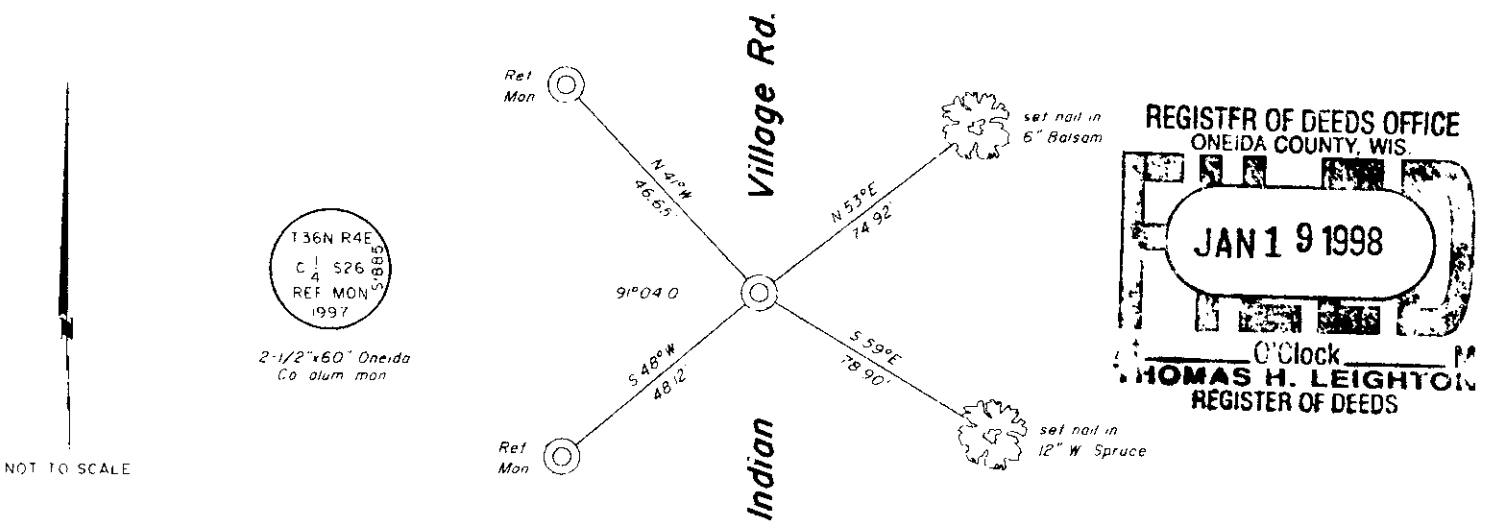
Original B.T.s

W. Pine stp. 40" N21-1/2'E, 108 lks.  
 Cedar stp. 16" N35'W, 117 lks.  
 Tamarack stp. 12" N68-1/2'E, 22-3/4 lks.

(b)(f)(g)(h) Description of monument found at this corner and if it was accepted, state all evidence (material, testimonial, occupational, plats, records, other monuments) used as a basis for accepting. If not accepted or if nothing was found, state evidence used as basis for establishing location. If reestablished through lost corner proportionate methods, indicate all monuments, distances and directions used to establish. Indicate type of monument and sign post found or set.

October 8, 1997: I established this corner record distance from two of Vaughan's stumps: W. Pine stp. N27'E, 71.3 feet and Cedar stp. N30'W, 77.2 feet. This location is supported by other corners in Section 26. I set a 1" dia., 24" long iron pipe with plastic cap 8" beneath the centerline of the gravel roadway. I established accessories as shown below and set plastic sign posts adjacent to both reference monuments.

(c)(d)(e) Plan view of corner with ties to at least 4 witness monuments. If in disagreement with previously established corner, show the distances between the two corners and also indicate the ties to the disputed.



(i) I, Jeffrey W. Austin, Registered Land Surveyor S-1885, hereby certify that the corner location on this record was determined by me or under my direction and control and that this U.S. Public Land Survey Monument Record is correct and complete to the best of my knowledge and belief.

Signature

Date

1-9-98



INDEX NO. T-19

360426 2020