

At \_\_\_\_\_ lock \_\_\_\_\_ M  
THOMAS A. LEIGHTON  
REGISTER OF DEEDS  
Recorder's Office

This form is intended to fulfill the requirements of Chapter A-E7.08 (3)(a) thru (i) U.S. Public Land Survey Monument Location Record, Wisconsin Administrative Code. Use the reverse side of form for continuation.

**U.S. PUBLIC LAND SURVEY MONUMENT LOCATION RECORD**

USPLS CORNER: NW SECTION: 35 TOWNSHIP: 36 NORTH RANGE: 4 EAST  
 NAME OF WATERWAY FOR M.C. CORNER: N/A SECTION LINE: N/A  
 (CITY)(VILLAGE)(TOWN) OF: LYNNE COUNTY OF: ONEIDA

Description of monument found or placed and all other evidence used as the basis for monument location; including monuments and measurements required if the corner location was reestablished by lost corner proportionate methods. Also indicate name of the original surveyor, original survey date and the corner monument, bearing trees, witness or other reference monuments established, including measured bearing and distance ties, from available survey records.

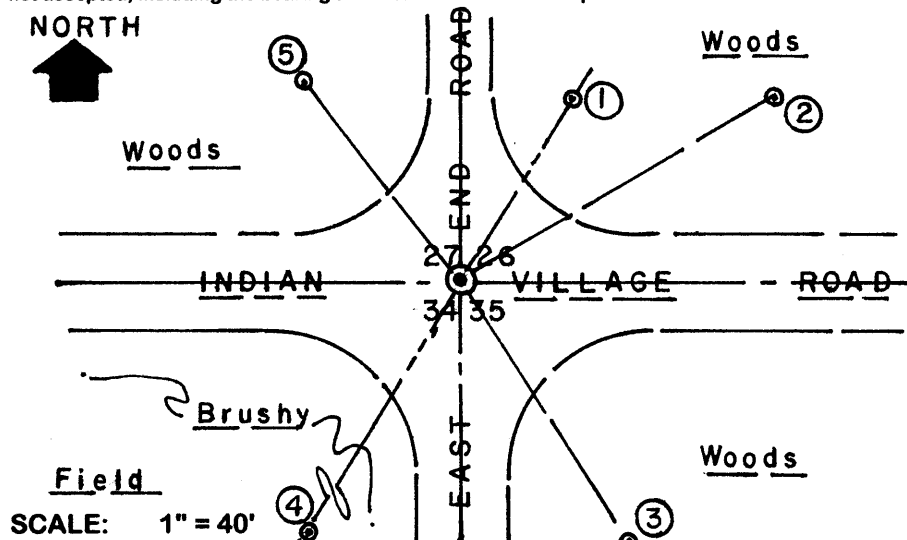
Found and accepted top of broken off stem of an extendable style cast aluminum Berntsen monument about 8" below the approximate center of an existing gravelled roadway junction; no other magnetic locator detection within a 10' radius. I left monument in place as it appeared to be plumb and secure for new ties. Also found a 3/4" dia. iron rod N45°W 45.50' and an old 18" Pj BT with a deep open & scribed face blaze S78°W 128.9' with 300' fiberglass tape. Aero-Metric previously located this corner as "center of found broken monument stem" for Oneida County GPS control survey.

In May-June 1865, Edward D. Palmer/GLO set a wood post as original corner and noted OBTs: A 13" Lind N33°W 41 links, a 7" Hemlock N45°E 43 links, a 6" Hemlock S40°E 30 links and a 12" Sugar S55°W 36 links; all now obliterated within existing roadway area.

In June 1991, Glen Barker/RLS 1682 notes a capped aluminum pipe monument found at this corner per Plat of Survey filed as B-3036 in Oneida County survey records. In January 1998, Jeffrey Austin/RLS 1885 notes a broken Berntsen monument found at this corner per Plat of Survey filed as C-1478 in Oneida County survey records. In September 2003, Devon Vanden Heuvel/RLS 1795, notes a brass capped monument found at this corner per Plat of Survey filed as C-2003 in Oneida County survey records, which I could not find with magnetic locator in roadway junction area.

This recovery completed on July 15, 2004; there were no direct witnesses other than vehicular drive-bys.

Plan view map of monument location with bearing and distance ties to a minimum of four(4) described witness or reference monuments of concrete, natural stone, iron, live bearing trees or equivalent material. If applicable, also show a minimum of two(2) bearing and distance ties to any other monument found and not accepted; including the bearing and distance from the accepted monument.



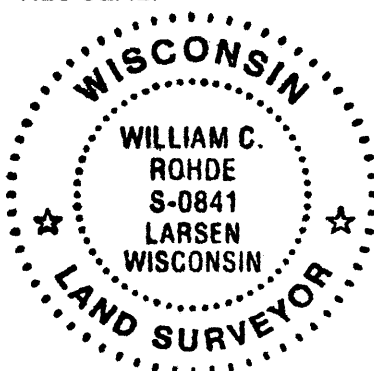
**WITNESS MONUMENT TIES:**

- ① 5/8" dia. by 24" long rebar set with yellow poly RM cap N31°E 43.60'.
- ② Old blazed 10" Mr BT with BT sign and 60d spike in right face N59°E 75.48'.
- ③ Old blazed 26" Basswood BT with BT sign S32°E 65.44'.
- ④ 5/8" by 24" long rebar set with yellow poly RM cap S31°W 72.83'.
- ⑤ Old blazed 12" Fir BT with BT sign N38°W 52.25'.

'T' post set 6" NE of Witness Mon. No. 1

Unless otherwise indicated, all bearing tree ties are to a .25" dia. by 2.5" long PK nail with a 1.25" dia. steel washer driven into unblazed right face and a .25" dia. by 2.5" long PK nail with a 2" dia. steel washer stamped BT is also driven into unblazed face of bearing tree at DBH; the basis for measured bearings is by compass to nearest degree and all tie distances are measured horizontal by steel tape corrected to nearest 1/100th feet at standard temperature of 68° F.

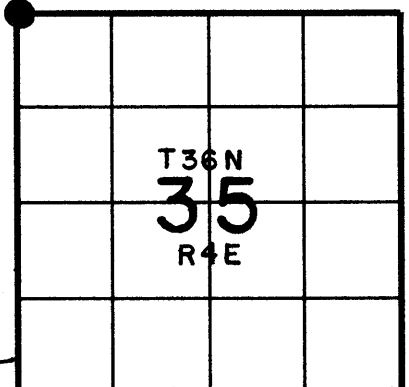
RLS SEAL:



**LAND SURVEYOR CERTIFICATE:**

I, William C. Rohde, hereby certify that I am duly licensed as a Professional Land Surveyor in the State of Wisconsin; that this USPLS monument location was determined by me and/or under my direct supervision and control; and that this U.S. Public Land Survey Monument Location Record is true and correct to the best of my knowledge and belief.

Signed *William C. Rohde*  
William C. Rohde RLS 841



SECTION LOCATION MAP  
INDEX NO. V 17

Date Signed: September 4, 2004

3604270000