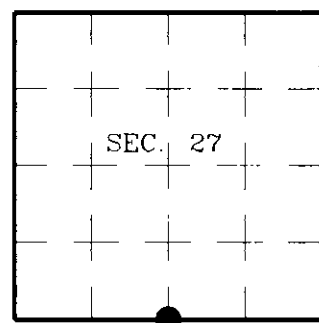


U.S. PUBLIC LAND SURVEY MONUMENT RECORD

Note: This form is intended and designed to fulfill all requirements of Wisconsin Administrative Code, Chapter A-E 7.08 U.S. Public Land Survey Monument Record (3)(a)(b)(c)(d)(e)(f)(g)(h)(i). An additional sheet may be added if necessary to conform with said requirements.

(a) CORNER LOCATION: State Plane Coordinates
 South 1/4 Corner of Section 27 X
 Township 36 North Y
 Range 4 East Datum Base
 Town of Lynne County of Oneida



(b) HISTORY OF ORIGINAL CORNER ESTABLISHMENT

Original Surveyor: Edward Palmer
 Date of Survey: Commenced May, 1865
 Completed June, 1865

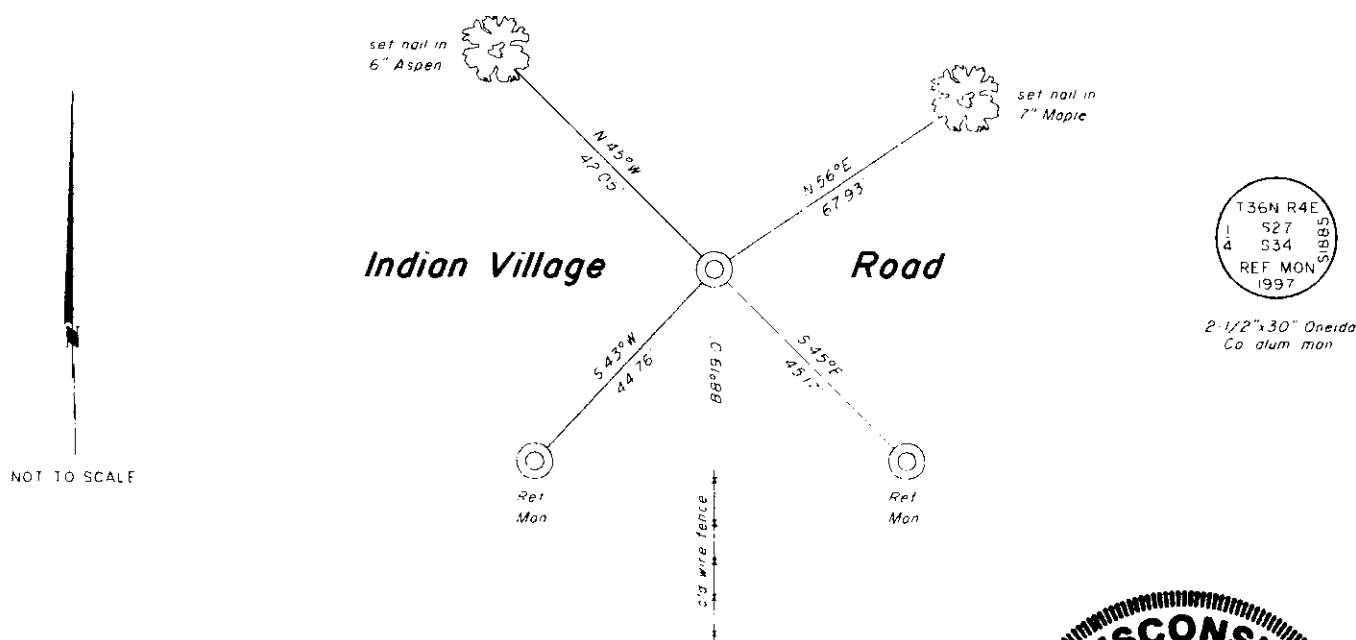
Original B.T.s
 Hemlock 10" N15°E, 24 lks.
 Ash 9" S21°E, 10 lks.

(b)(f)(g)(h) Description of monument found at this corner and if it was accepted, state all evidence (material, testimonial, occupational, plats, records, other monuments) used as a basis for accepting. If not accepted or if nothing was found, state evidence used as basis for establishing location. If reestablished through lost corner proportionate methods, indicate all monuments, distances and directions used to establish. Indicate type of monument and sign post found or set.

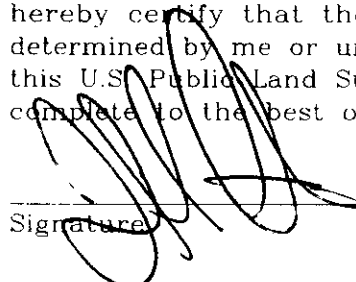
1923: Lynn Vaughan established this corner using single proportionate measure and established accessories: W. Pine stp. 16" S51°W, 63-3/4 lks. and W. Pine stp. 16" S11-1/2°E, 89 lks.

October 28, 1997: I established this corner at the midpoint of a line connecting the Southwest and Southeast Corners of Section 27 as shown on my survey map filed in the Oneida County Surveyor's office. This location is in the centerline of Indian Village Road and is supported by other corners in Section 27. Vaughan's W. Pine stp. bears S51°W, 42 feet. I set a 1" dia., 24" long iron pipe with plastic cap 6" beneath the gravel surface. I established accessories as shown below and set plastic sign posts adjacent to both reference monuments.

(c)(d)(e) Plan view of corner with ties to at least 4 witness monuments. If in disagreement with previously established corner, show the distances between the two corners and also indicate the ties to the disputed.



(i) I, Jeffrey W. Austin, Registered Land Surveyor S-1885, hereby certify that the corner location on this record was determined by me or under my direction and control and that this U.S. Public Land Survey Monument Record is correct and complete to the best of my knowledge and belief.

Signature:  Date: 1-9-98



INDEX NO. V-15

3604270020