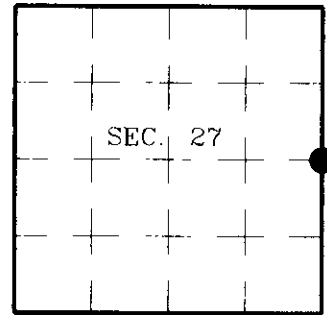


U.S. PUBLIC LAND SURVEY MONUMENT RECORD

Note: This form is intended and designed to fulfill all requirements of Wisconsin Administrative Code, Chapter A-E 7.08 U.S. Public Land Survey Monument Record (3)(c)(b)(c)(d)(e)(f)(g)(h)(i). An additional sheet may be added if necessary to conform with said requirements.

(a) CORNER LOCATION: State Plane Coordinates
 East 1/4 Corner of Section 27 X
 Township 36 North Y
 Range 4 East Datum Base
 Town of Lynne County of Oneida



(b) HISTORY OF ORIGINAL CORNER ESTABLISHMENT

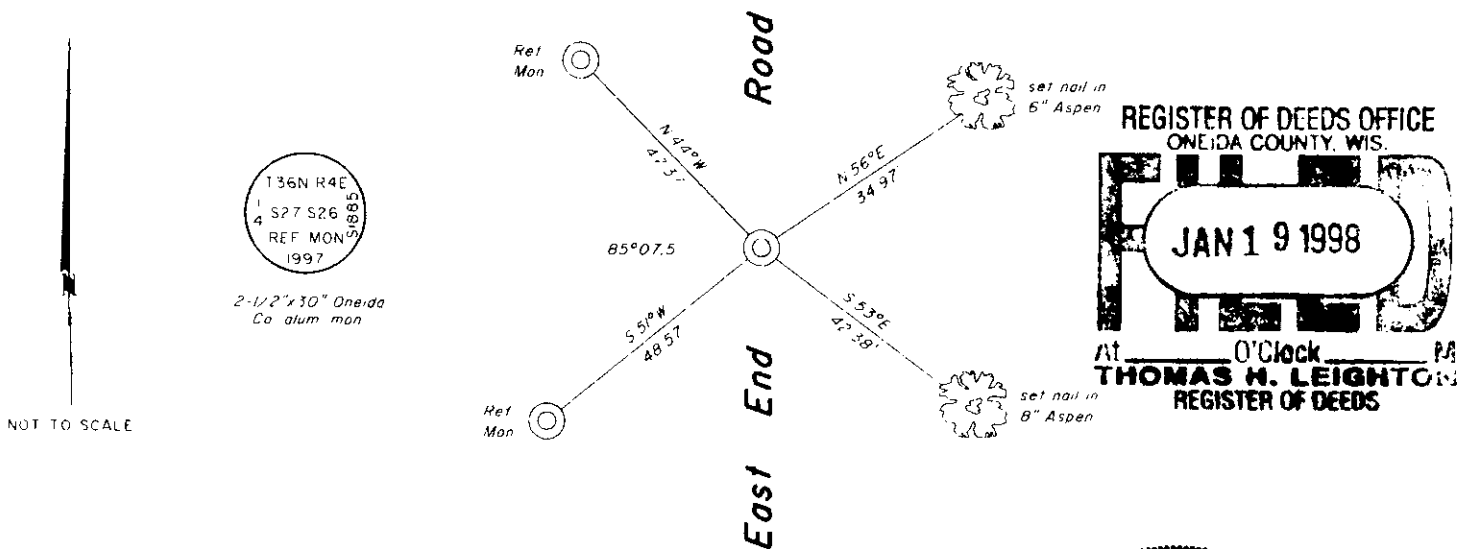
Original Surveyor: Edward Palmer Original B.T.s
 Date of Survey: Commenced May, 1865
 Completed June, 1865 Tamarac 14" N80°W, 16 lks.
 Alder 3' N63°E, 23 lks.

(b)(f)(g)(h) Description of monument found at this corner and if it was accepted, state all evidence (material, testimonial, occupational, plats, records, other monuments) used as a basis for accepting. If not accepted or if nothing was found, state evidence used as basis for establishing location. If reestablished through lost corner proportionate methods, indicate all monuments, distances and directions used to establish. Indicate type of monument and sign post found or set.

1924: C.D. Vaughan found 1/4 set by D.H.V. from original. New BTs Birch stp. N73°E, 23 lks. and Birch stp. N32-1/2°W, 33 lks.

October 28, 1997: I was unable to recover definitive evidence of Vaughan's corner location. I established this corner by least square adjustment using Vaughan's record distances against the adjoining Center One-Quarter Corners and Section Corners as shown on my survey map filed in the Oneida County Surveyor's office. The residuals of this adjustment are all under 4 feet. This location is 1 foot East of the centerline of East End Road and is supported by other corners in Sections 26 and 27. I set a 1" dia., 24" long iron pipe with plastic cap 6" beneath the gravel surface. I established accessories as shown below and set plastic sign posts adjacent to both reference monuments.

(c)(d)(e) Plan view of corner with ties to at least 4 witness monuments. If in disagreement with previously established corner, show the distances between the two corners and also indicate the ties to the disputed.



(i) I, Jeffrey W. Austin, Registered Land Surveyor S-1885, hereby certify that the corner location on this record was determined by me or under my direction and control and that this U.S. Public Land Survey Monument Record is correct and complete to the best of my knowledge and belief.



Signature

1-9-98
Date

INDEX NO. T-17

3604272000