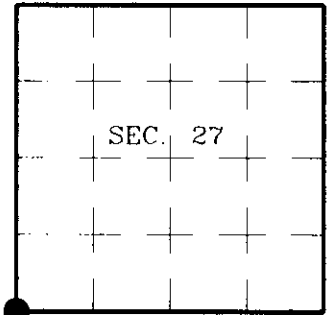


U.S. PUBLIC LAND SURVEY MONUMENT RECORD

Note: This form is intended and designed to fulfill all requirements of Wisconsin Administrative Code, Chapter A-E 7.08 U.S. Public Land Survey Monument Record (3)(a)(b)(c)(d)(e)(f)(g)(h)(i). An additional sheet may be added if necessary to conform with said requirements.

(a) CORNER LOCATION: State Plane Coordinates
 Southwest Corner of Section 27 X
 Township 36 North Y
 Range 4 East Datum Base
 Town of Lynne County of Oneida



(b) HISTORY OF ORIGINAL CORNER ESTABLISHMENT

Original Surveyor: Edward Palmer
 Date of Survey: Commenced May, 1865
 Completed June, 1865

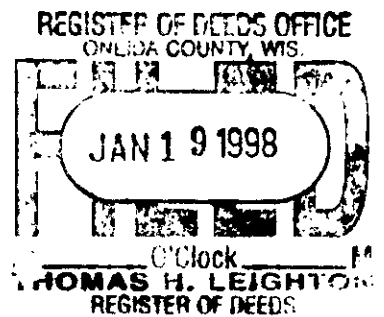
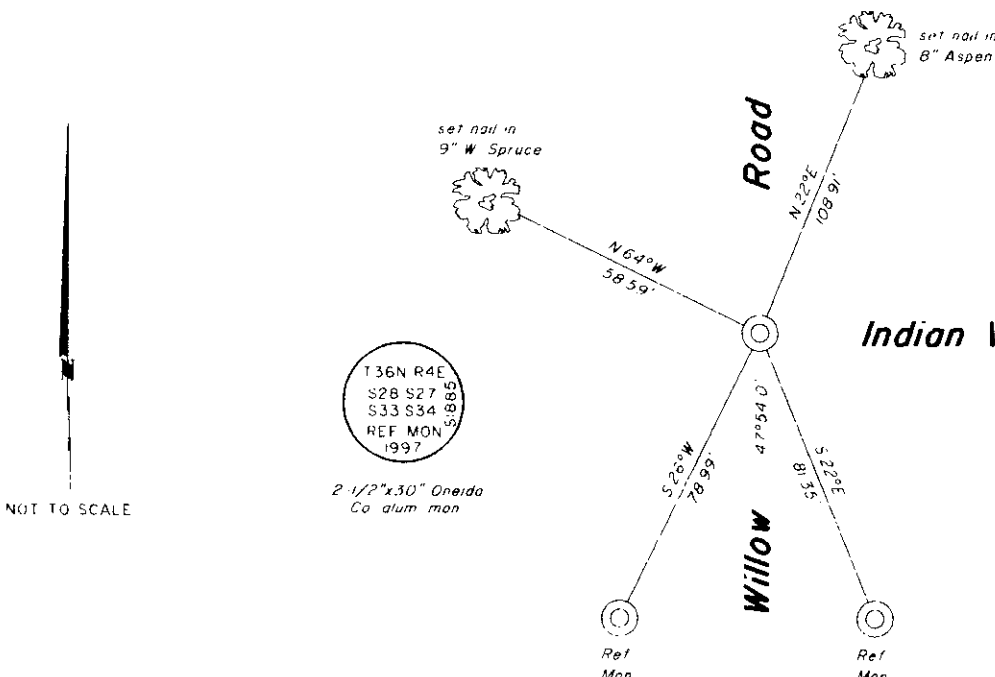
Original B.T.s
 W. Pine 14" N18°W, 38 lks.
 Fir 10" N39°E, 16 lks.
 Fir 7" S35°E, 44 lks.
 Birch 7' S20°W, 41 lks.

(b)(f)(g)(h) Description of monument found at this corner and if it was accepted, state all evidence (material, testimonial, occupational, plats, records, other monuments) used as a basis for accepting. If not accepted or if nothing was found, state evidence used as basis for establishing location. If reestablished through lost corner proportionate methods, indicate all monuments, distances and directions used to establish. Indicate type of monument and sign post found or set.

1923: Lynn Vaughan notes Iron pins and BTs gone, set cor. in center of N-S road and road going East. New iron and BTs, W. Pine stp. 16" S29°E, 102-1/2 lks. and W. Pine stp. 14" N50-1/2°E, 140 lks.

October 8, 1997: I was unable to recover definitive evidence of Vaughan's corner location. I established this corner at the intersection of the centerlines of the roads as described in Vaughan's notes. This location is supported by other corners in Section 27. I set a 1" dia., 24" long iron pipe with plastic cap flush with the pavement surface. I established accessories as shown below and set plastic sign posts adjacent to both reference monuments.

(c)(d)(e) Plan view of corner with ties to at least 4 witness monuments. If in disagreement with previously established corner, show the distances between the two corners and also indicate the ties to the disputed.



(i) I, Jeffrey W. Austin, Registered Land Surveyor S-1885, hereby certify that the corner location on this record was determined by me or under my direction and control and that this U.S. Public Land Survey Monument Record is correct and complete to the best of my knowledge and belief.

Signature

Date 1-9-98



INDEX NO. V-13

3604280000