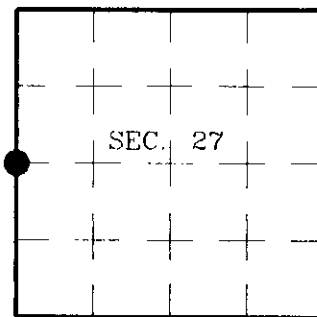


# U.S. PUBLIC LAND SURVEY MONUMENT RECORD

Note: This form is intended and designed to fulfill all requirements of Wisconsin Administrative Code, Chapter  
 Δ-E 7.08 U.S. Public Land Survey Monument Record (3)(a)(b)(c)(d)(e)(f)(g)(h)(i). An additional sheet may be  
 added if necessary to conform with said requirements.

(a) CORNER LOCATION: State Plane Coordinates  
 West 1/4 Corner of Section 27 X  
 Township 36 North Y  
 Range 4 East Datum Base  
 Town of Lynne County of Oneida



(b) HISTORY OF ORIGINAL CORNER ESTABLISHMENT

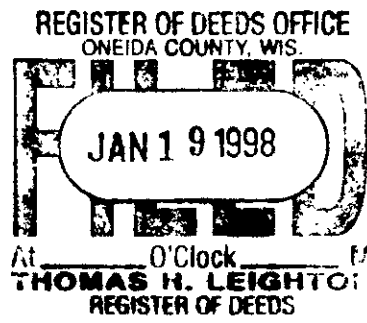
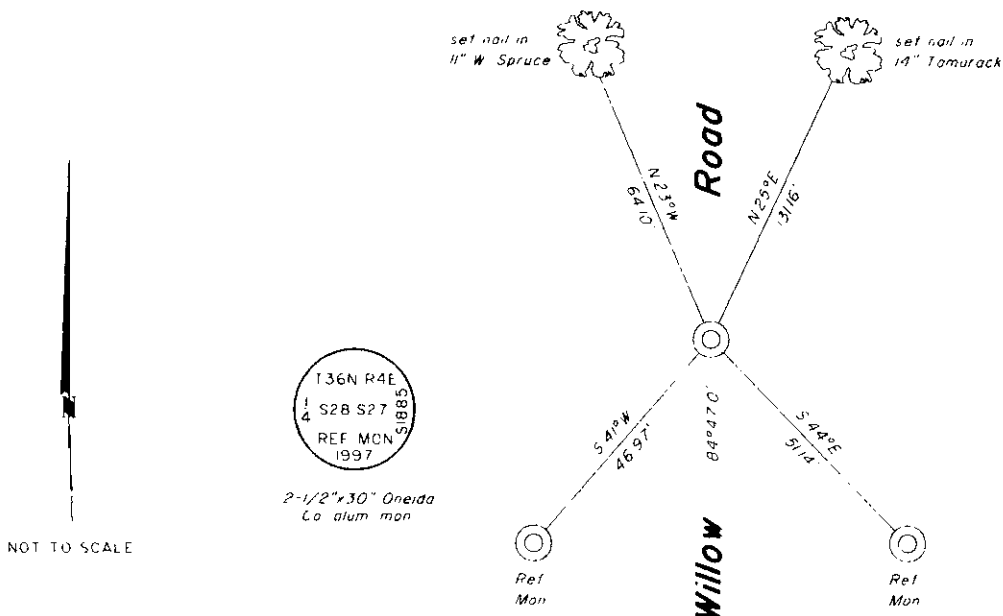
Original Surveyor: Edward Palmer Original B.T.s  
 Date of Survey: Commenced May, 1865  
 Completed June, 1865 none

(b)(f)(g)(h) Description of monument found at this corner and if it was accepted, state all evidence (material, testimonial, occupational, plats, records, other monuments) used as a basis for accepting. If not accepted or if nothing was found, state evidence used as basis for establishing location. If reestablished through lost corner proportionate methods, indicate all monuments, distances and directions used to establish. Indicate type of monument and sign post found or set.

1924: C.D. Vaughan established this corner using single proportionate measure and established accessories: W. Pine 36" N66°W, 53 lks.

October 12, 1997: I established this corner record bearing and distance from Vaughan's stump: W. Pine stp. 36" N66°W, 35 feet. This location is 2 feet West of the centerline of Willow Road and is supported by other corners in Section 27. I set a 1" dia., 24" long iron pipe with plastic cap flush with the pavement surface. I established accessories as shown below and set plastic sign posts adjacent to both reference monuments.

(c)(d)(e) Plan view of corner with ties to at least 4 witness monuments. If in disagreement with previously established corner, show the distances between the two corners and also indicate the ties to the disputed.



(i) I, Jeffrey W. Austin, Registered Land Surveyor S-1885, hereby certify that the corner location on this record was determined by me or under my direction and control and that this U.S. Public Land Survey Monument Record is correct and complete to the best of my knowledge and belief.

Signature: *[Handwritten Signature]* Date: 1-9-98



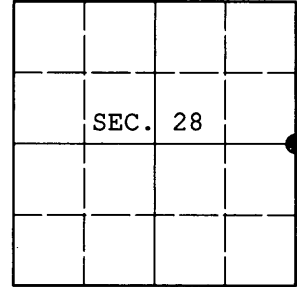
INDEX NO. T-13

3604282000

**U.S. PUBLIC LAND SURVEY MONUMENT RECORD**

Note: This form is intended and designed to fulfill all requirements of Wisconsin Administrative Code, Chapter A-E 7.08 U.S. Public Land Survey Monument Record (3) (a) (b) (c) (d) (e) (f) (g) (h) (i). An additional sheet may be added if necessary to conform with said requirements.

(a) CORNER LOCATION: Plane Coordinates  
 1/4 Cor. of Secs. 27 & 28 N:  
 Township 36 North E:  
 Range 4 East of the 4th P.M. Datum:  
 Town of Lynne County of Oneida



(b) HISTORY OF ORIGINAL CORNER ESTABLISHMENT

Original Surveyor: Edward Palmer Original Accessories:  
 Date of Survey: Commenced May, 1865 birch 14" S65°W, 28 lks.  
 Completed June, 1865 fir 6" N13°E, 12 lks.

(b) (f) (g) (h) Description of monument found at this corner and if it was accepted, state all evidence (material, testimonial, occupational, plats, records, other monuments) used as a basis for accepting. If not accepted or if nothing was found, state evidence used as basis for establishing location. If re-established through lost corner proportionate methods, indicate all monuments, distances and directions used to establish. Indicate type of monument and sign post found or set.

NOTE: This is a perpetuation of a previous USPLS Monument Record by Jeffrey W. Austin, RLS dated January 9, 1998 and filed in the office of the Oneida County Register of Deeds. A complete history of the corner can be found on the previous monument record. I accept the previous location as a true and faithful perpetuation or reestablishment of the original corner location and further perpetuate it as follows.

November 29, 2011: I found and accepted a Berntsen DuraNail 2 ft. West of the centerline of Willow Road. I found my NW tree recently cut and my NE tree windthrown. I found or established accessories as shown below and set a white plastic sign post adjacent to the southerly reference monuments.

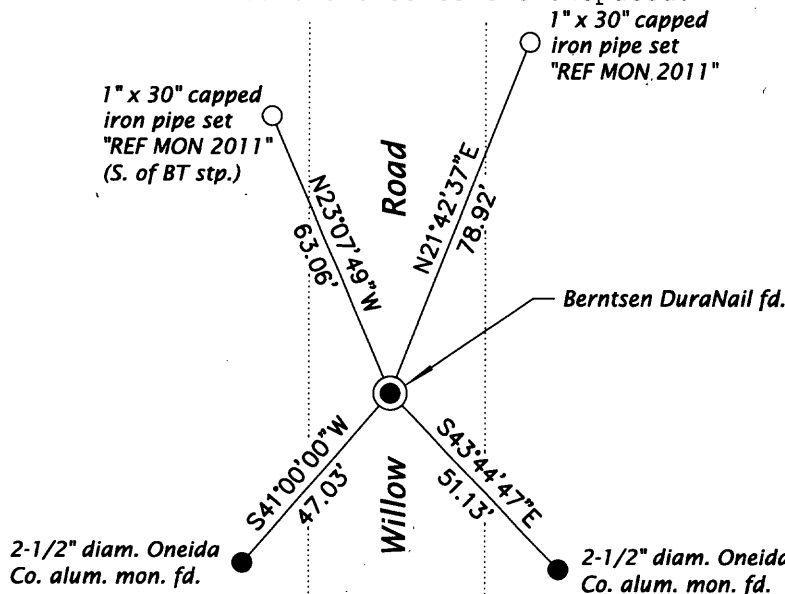
REGISTER OF DEEDS OFFICE  
 ONEIDA COUNTY

**FILED**

JAN 16 2012

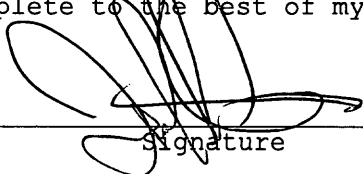
AT \_\_\_\_\_ O'CLOCK \_\_\_\_\_ M  
**THOMAS H. LEIGHTON**  
 REGISTER OF DEEDS

(c) (d) (e) Plan view of corner with ties to at least 4 witness monuments. If in disagreement with previously established corner, show the distances between the two corners and also indicate the ties to the disputed.



NO SCALE

(i) I, Jeffrey W. Austin, Registered Land Surveyor No. S-1885, hereby certify that the corner location on this record was determined by me or under my direction and control and that this U.S. Public Land Survey Monument Record is correct and complete to the best of my knowledge and belief.

  
 Signature

DEC 31, 2011  
 Date



