

At _____ O'Clock _____ M

U.S. PUBLIC LAND SURVEY MONUMENT RECORD

NOTE: This form is intended and designed to fulfill all requirements of Wisconsin Administrative Code, Chapter A-E 7.08 U.S. Public Land Survey Monument Record (3)(a)(b)(c)(d)(e)(f)(g)(h)(i). An additional sheet may be added if necessary to conform with said requirements.

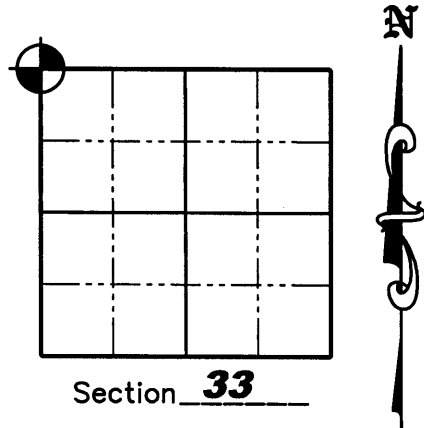
(a) Corner location: Township 36 North

Range 4 East

Town of LYNNE

County ONEIDA

Oneida County Northing 140134.678
Coordinates Easting 112725.669



(b)(f)(g)(h) Description of monument found at this corner and if it was accepted, state all evidence (material, testimonial, occupation, plats, records, other monuments) used as a basis for accepting. If not accepted or if nothing was found, state evidence used as a basis for establishing location. If reestablished through lost corner proportionate methods, indicate all monuments, distances and directions used to establish. Indicate type of monument found or set and sign post.

1865- Edward D. Palmer, set corner post and. B.T.'s: Hemlock 14", N55°W 9 lks; Fir 9", N70°E 30 lks; Fir 8" S65°E 17 lks; Fir 7" S30°W 16 lks.

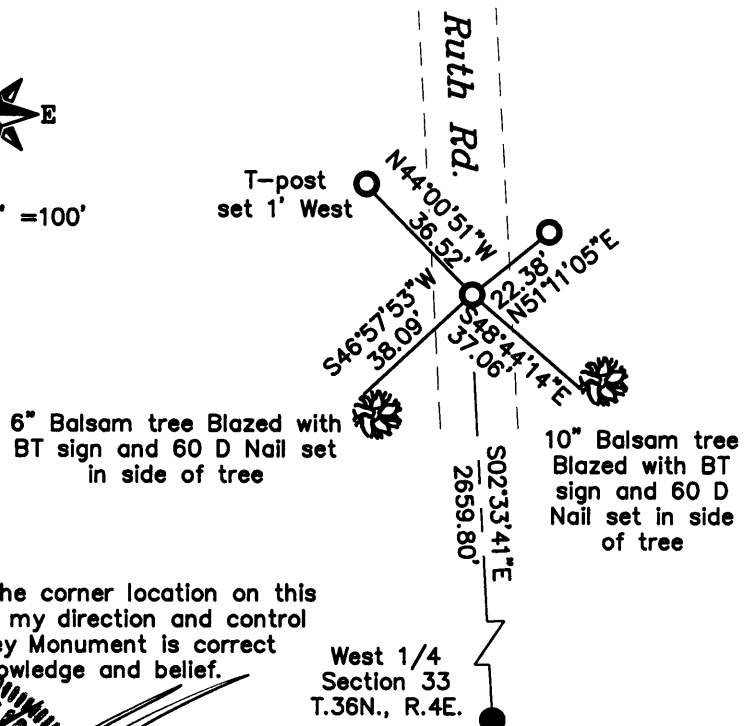
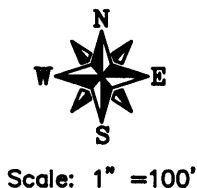
7/07/1908- D.H. Vaughan, ran North 40.30 Chains (2659.8 feet) from W 1/4 Corner of Section 33 and fell 2.26 East of corner which he set from NW BT. He set an iron bolt for post - 18 inches long by 1-1/4 inch and New B.T.'s: W. Pine stump 28" S44°E 66-1/2 lks.

8/14/2006- Matthew E. Hogleund, R.L.S. S-1910, did extensive search for corner and found no evidence of the Corner. We reestablished the Corner by running North a record distance of 2659.80', from D.H. Vaughan in 1908, from the West 1/4 Corner of Section 33 and setting a 3/4" iron rebar 4" below the centerline of Ruth Road. We Tied the Corner out as shown below. Oneida County coordinates determined from total station traverse from GPS pair surveyed by Jeff Austin R.L.S.

(c)(d)(e) Plan view of corner with ties to at least 4 witness monuments. If in disagreement with previously established corner, show the distances between the two corners and also indicate the ties to the disputed corner.

LEGEND

- 3/4" x 24" Iron Rebar Set Weighing 1.50 lbs/lin ft.
- 3/4" Iron Rebar Found



(i) I, Matthew E. Hogleund, certify that the corner location on this record was determined by me under my direction and control and that this U.S. Public Land Survey Monument is correct and complete to the best of my knowledge and belief.

Signature Matthew E. Hogleund Date 10/12/2006

MATTHEW E. HOGLEUND
S-1910
TOMAHAWK
WI
LAND SURVEYOR

Proj. # 732

3604 29 0000

V-9