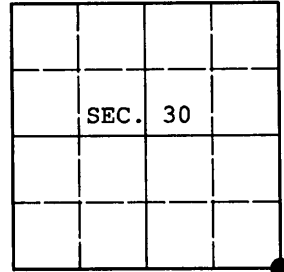


U.S. PUBLIC LAND SURVEY MONUMENT RECORD

Note: This form is intended and designed to fulfill all requirements of Wisconsin Administrative Code, Chapter A-E 7.08 U.S. Public Land Survey Monument Record (3) (a) (b) (c) (d) (e) (f) (g) (h) (i). An additional sheet may be added if necessary to conform with said requirements.

(a) CORNER LOCATION: Oneida County Coordinates
 Cor. of Secs. 29, 30, 31 & 32 N: 140,126.458 USft
 Township 36 North E: 107,414.170 USft
 Range 4 East of the 4th P.M. Datum: NAD 1983(1991)
 Town of Lynne County of Oneida



(b) HISTORY OF ORIGINAL CORNER ESTABLISHMENT

Original Surveyor: Edward D. Palmer Original Accessories:
 Date of Survey: Commenced: May 27, 1865 birch 12" N22°W, 14 lks.
 Completed: June 4, 1865 birch 10" N30°E, 33 lks.
 birch 12" S36°E, 32 lks.

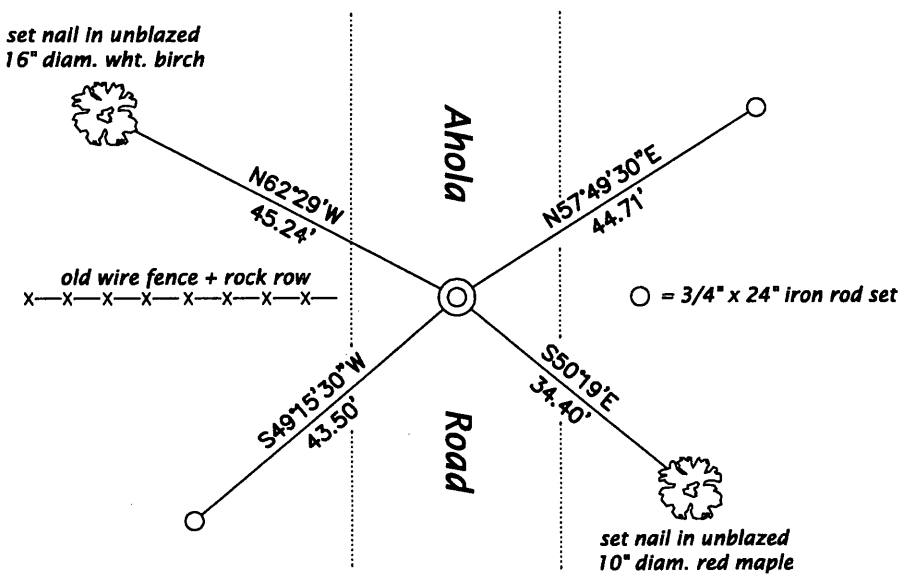
(b) (f) (g) (h) Description of monument found at this corner and if it was accepted, state all evidence (material, testimonial, occupational, plats, records, other monuments) used as a basis for accepting. If not accepted or if nothing was found, state evidence used as basis for establishing location. If re-established through lost corner proportionate methods, indicate all monuments, distances and directions used to establish. Indicate type of monument and sign post found or set.

June 15, 1921: Notes by Vaughan in book 9 on page 37 indicate he recovered the original corner witnessed by a new bearing tree: y. birch 15" S72-1/2°W, 71 lks.

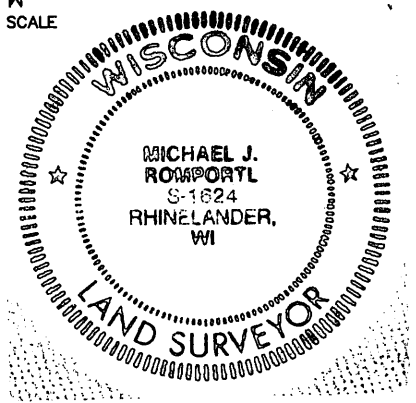
November 28, 2012: An extensive search for evidence of the General Land Office survey and any subsequent resurveys mentioned above was performed. Having found none, the corner was positioned at the intersection of the remains of a downed wire fence and rock row to the West and the centerline of Ahola Road. The distance from this corner to 3604180000 agrees with Vaughan's distance very favorably. At the corner point a 3/4" diam., 24" long iron rod was set 8" beneath the road surface. Accessories were established as shown below and white plastic sign posts were set adjacent to each reference monument.

The coordinates shown were derived from two independent RTK observations of the corner point and are based on the WISCORS network.

(c) (d) (e) Plan view of corner with ties to at least 4 witness monuments. If in disagreement with previously established corner, show the distances between the two corners and also indicate the ties to the disputed.



REGISTER OF DEEDS OFFICE
 ONEIDA COUNTY
 FILED
 APR 15 2013
 AT _____ O'CLOCK _____ M
 KYLE J. FRANSON
 REGISTER OF DEEDS



(i) I, Michael J. Romportl, Registered Land Surveyor No. S-1624, hereby certify that the corner location on this record was determined by me or under my direction and control and that this U.S. Public Land Survey Monument Record is correct and complete to the best of my knowledge and belief.

Michael J. Romportl 2/12/2013
 Signature Date