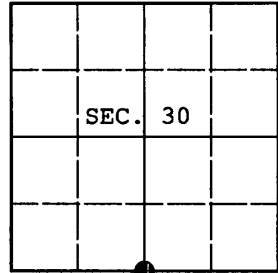


**U.S. PUBLIC LAND SURVEY MONUMENT RECORD**

Note: This form is intended and designed to fulfill all requirements of Wisconsin Administrative Code, Chapter A-E 7.08 U.S. Public Land Survey Monument Record (3) (a) (b) (c) (d) (e) (f) (g) (h) (i). An additional sheet may be added if necessary to conform with said requirements.

(a) CORNER LOCATION: Oneida County Coordinates  
 1/4 Cor. of Secs. 30 & 31 N: 140,212.640 USft  
 Township 36 North E: 104,769.519 USft  
 Range 4 East of the 4th P.M. Datum: NAD 1983(1991)  
 Town of Lynne County of Oneida



(b) HISTORY OF ORIGINAL CORNER ESTABLISHMENT

Original Surveyor: Edward D. Palmer Original Accessories:  
 Date of Survey: Commenced: May 27, 1865 hemlock 9" N22°E, 18 lks.  
 Completed: June 4, 1865 birch 20" S10°W, 32 lks.

(b) (f) (g) (h) Description of monument found at this corner and if it was accepted, state all evidence (material, testimonial, occupational, plats, records, other monuments) used as a basis for accepting. If not accepted or if nothing was found, state evidence used as basis for establishing location. If re-established through lost corner proportionate methods, indicate all monuments, distances and directions used to establish. Indicate type of monument and sign post found or set.

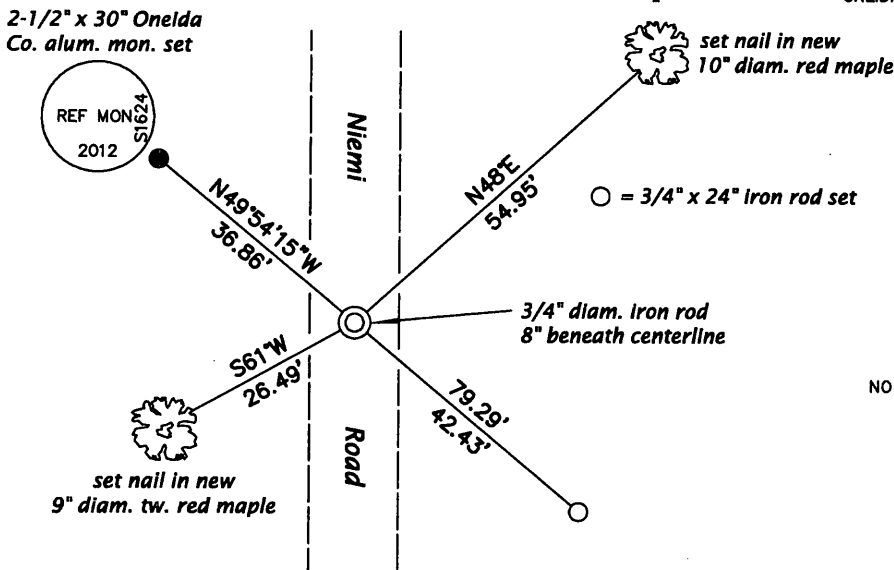
August 22, 1916: Notes by Vaughan in fieldbook 8 on page 55 indicate he found the original wood post and original bearing tree remains. He made the following bearing trees: sugar 8 N78-1/2°W, 35 and aspen 7 S76°E, 40. Vaughan's work was performed for the Town of Lynne to guide the alignment of Niemi Road.

November 30, 2012: An extensive search for evidence of the General Land Office survey and any subsequent resurveys mentioned above was performed. Having found none, the corner was positioned at the intersection of a substantial rock row to the East, the remains of a wire fence to the West and the centerline of Niemi Road. At the corner point a 3/4" diam., 24" long iron rod was set 8" beneath the centerline of the road. Accessories were established as shown below and white plastic sign posts were set adjacent to the reference monuments.

The controlling corner, 3604310020 bears S1°01'08"E, 5300.82'. (Vaughan: 80.26 ch.)

The coordinates shown were derived from two independent RTK observations of the corner point and are based on the WISCORS network.

(c) (d) (e) Plan view of corner with ties to at least 4 witness monuments. If in disagreement with previously established corner, show the distances between the two corners and also indicate the ties to the disputed.



ONEIDA CO. GRID

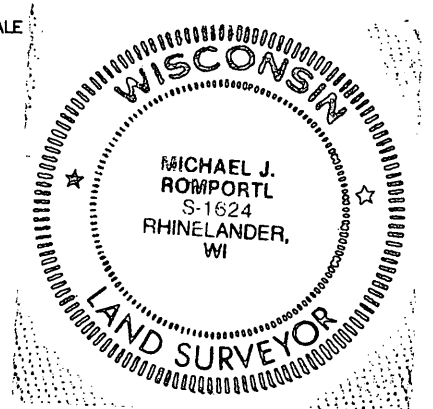
REGISTER OF DEEDS OFFICE  
 ONEIDA COUNTY  
 FILED

APR 15 2013

AT \_\_\_\_\_ O'CLOCK \_\_\_\_\_ M  
 KYLE J. FRANSON  
 REGISTER OF DEEDS

NO SCALE

(i) I, Michael J. Romportl, Registered Land Surveyor No. S-1624, hereby certify that the corner location on this record was determined by me or under my direction and control and that this U.S. Public Land Survey Monument Record is correct and complete to the best of my knowledge and belief.



Michael J Romportl 2/12/2013  
 Signature Date

3604300020 (INDEX NO. V-3)