

U.S. PUBLIC LAND SURVEY MONUMENT RECORD FOR LINCOLN COUNTY, WISCONSIN

Note: This form is intended and designed to fulfill all requirements of Wisconsin Administrative Code, Chapter A-E 5.02, U.S. Public Land Survey Monument Record (3) (a) (b) (c) (d) (e) (f) (g) (h) (i). Use additional sheet if necessary.

(a) The section, one quarter corner common to sections 6 & 31,

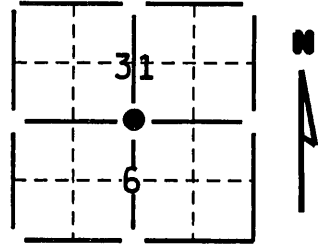
Township(s) 35 & 36 N, Range(s) 4 E

Lincoln County coordinates: N _____

E _____

Town/City/Village Somo, Lynne

County Lincoln, Oneida



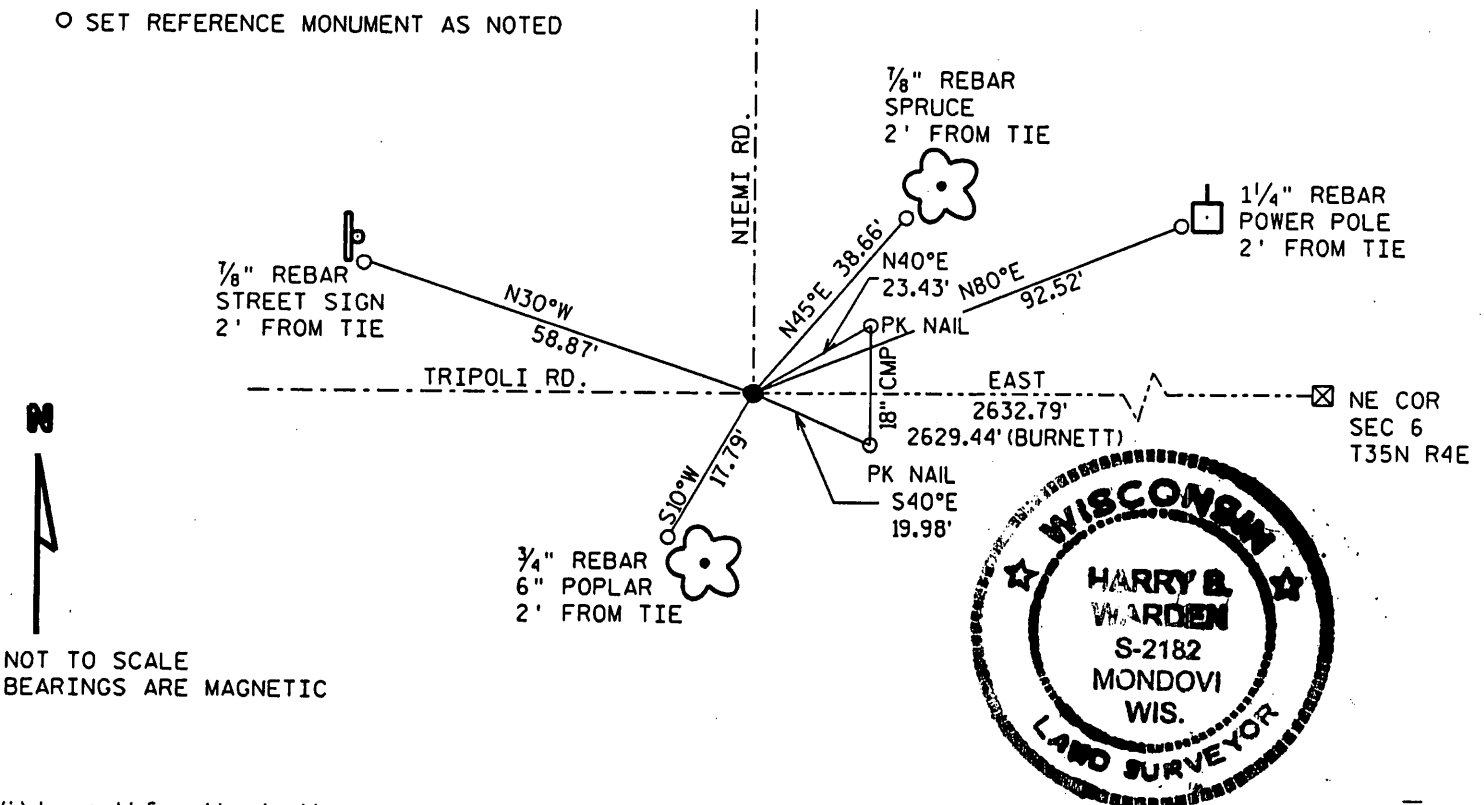
(b) (f) (g) (h) Description of monument found at this corner and if it was accepted, state all evidence (testimonial, occupational, plats, records, other monuments) used as a basis for accepting. If not accepted or nothing was found, state evidence used as a basis for establishing location and what was set. If reestablished through lost corner proportionate methods, indicate all monuments, distances and directions used.

FOUND IRON PIPE AT CL - CL OF TOWN ROADS. ACCEPTED AS CORNER LOCATION.

(c) (d) (e) Plan view of corner with ties to a least 4 witness monuments. If in disagreement with previously established corner, show the distances between the two corners and also indicated ties to disputed corner.

LEGEND:

- PLSS MONUMENT AS NOTED
- FOUND 2" IRON PIPE
- SET REFERENCE MONUMENT AS NOTED



NOT TO SCALE
BEARINGS ARE MAGNETIC

(i) I certify that the corner location on this record was determined by me or under my direction and control and that this U.S. Public Land Survey Monument Record is correct and complete to the best my knowledge and belief.

Harry B. Warden
Signature

6.8.2010
Date

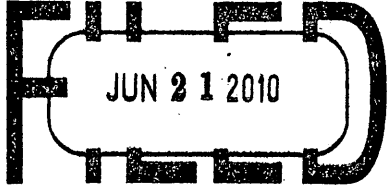
INDEX # 2-3
T35N R4E

Filed for record in Lincoln County Surveyor's Office on _____

Date 3604310020

3604310020

REGISTER OF DEEDS OFFICE
ONEIDA COUNTY, WIS.



At _____ O'Clock _____ M
THOMAS H. LEIGHTON
REGISTER OF DEEDS