

CERTIFIED LAND CORNER RESTORATION

Index No. Z-9
SW Cor. 33-36-4
From Lincoln Ctr Files

360432000

State of Wisconsin }
County of Lincoln } ss.

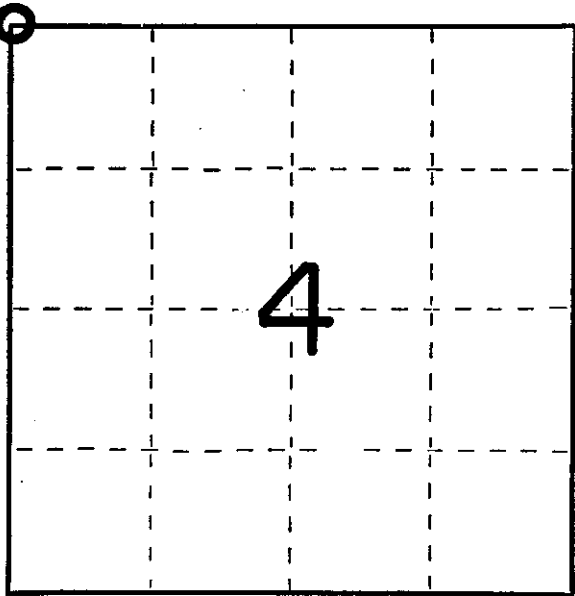
I Robert H. Winat, do hereby certify that on the 15 day of January, 19 73, I found evidence of the Northwest corner of Section 4 Township 35 4 East, North, Range 4 East, Fourth, Principal Meridian, as described hereon; and that from this evidence I established a new monument and accessories as described hereon to perpetuate the original location of this corner.

Resident witnesses:

History of original corner establishment:
Alex Andersen
July 1864
Wood Post
10" Hemlock N50°W, 19 lk
10" Hemlock N55°E, 47 lk
9" Hemlock S10°E, 10 lk
9" Hemlock S33°W, 27 lk

Description of corner evidence found:
This corner was re-established from the iron pin set 33 feet North by the Division of Highways and A.W. Kordick, Lincoln County Surveyor in 1945, even though this location is about 4 feet longer than D.S. Burnett's from the north one-quarter corner of Section 4. The corner fits the road intersections and Burnett's ties to the ditch and Town Hall building.

Description of monument and accessories I established to perpetuate the original location of this corner.
Lincoln Co. Berntsen monument 36"
1' north of center Hwy. "8"
Ties
PK & disc in 15" Elm N19°E, 75.55'
PK & disc in 6" White birch N28°W, 75.18'
1-1/8" dia. iron bar N5°W, 33.00'
L-mark on NE corner north end concrete box culvert N74°W, 98.84'
L-mark on SE corner South end concrete box culvert S67°W, 98.80'
Concrete block corner at metal siding northwest corner Town garage building S34°E, 102.62'



○ = Corner monument restored.

Dated at Minneapolis, Wis., this 19th day of November, 1974

Signature Robert H. Winat Title Land Surveyor Registration No. S-1040
(County Surveyor, Registered Land Surveyor, or other duly authorized official)

Office of Register of Deeds, County of _____, I hereby certify that the within instrument was filed in this office for record on the _____ day of _____, 19____ at _____ o'clock _____ M.

(Register of Deeds)
By _____ Deputy

U.S. PUBLIC LAND SURVEY MONUMENT RECORD FOR LINCOLN COUNTY, WISCONSIN

Note: This form is intended and designed to fulfill all requirements of Wisconsin Administrative Code, Chapter A-E 5.02, U.S. Public Land Survey Monument Record (3) (a) (b) (c) (d) (e) (f) (g) (h) (i). Use additional sheet if necessary.

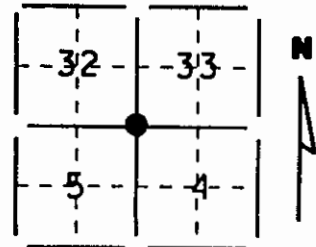
(a) The section, one quarter corner common to sections 4, 5, 32 & 33.

Township(s) 35 & 36 N, Range(s) 4 E

State plane coordinates: N _____
S _____

Town/City/Village Somo, Lynne

County Lincoln, Oneida

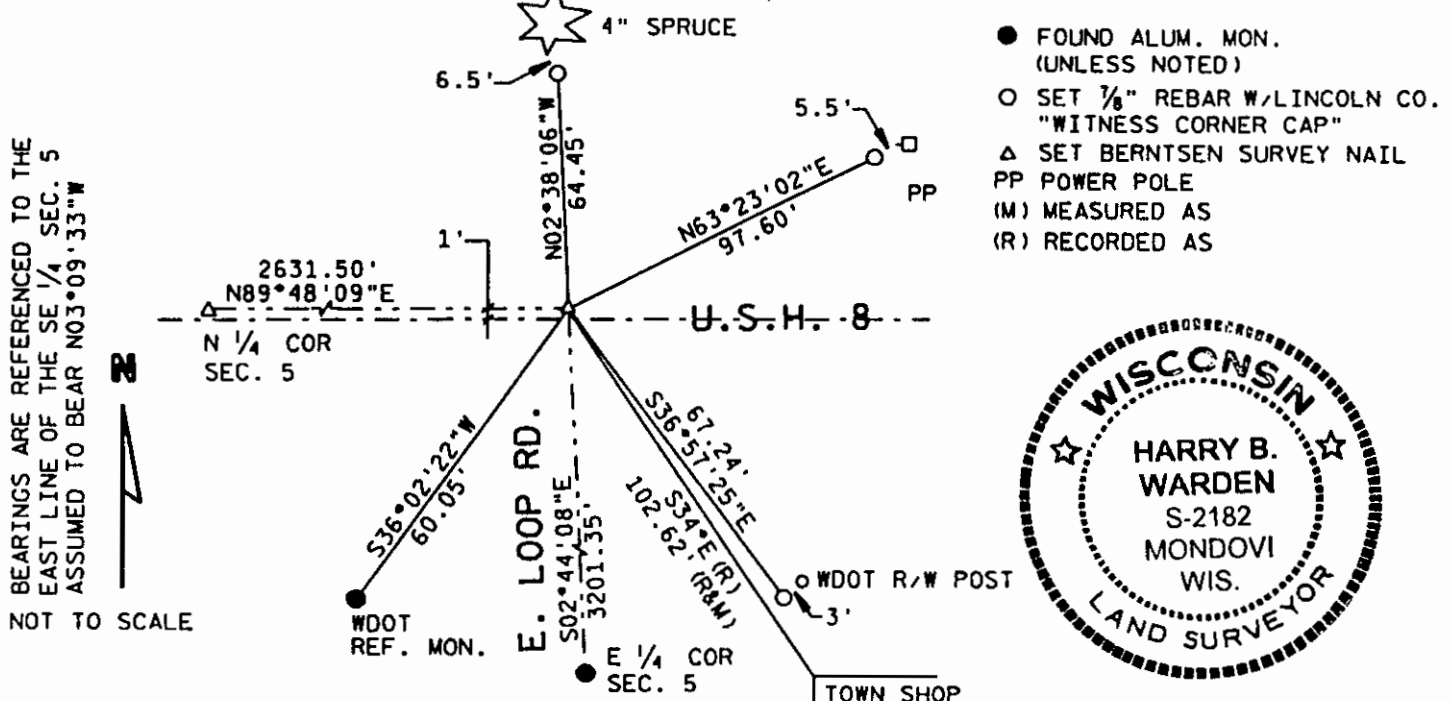


(b) (f) (g) (h) Description of monument found at this corner and if it was accepted, state all evidence (testimonial, occupational, plats, records, other monuments) used as a basis for accepting. If not accepted or nothing was found, state evidence used as a basis for establishing location and what was set. If reestablished through lost corner proportionate methods, indicate all monuments, distances and directions used.

No monument was found at corner location. Corner was re-established using record dimension from corner of town shop & distance stamped on WDOT Reference Monument Southwest. A Berntsen Survey Nail was set.

**RECEIVED AT LINCOLN COUNTY
COURTHOUSE THIS 19 DAY
OF Dec 1995
Pat Quiles
TAX DESCRIPTION OFFICE**

(c) (d) (e) Plan view of corner with ties to a least 4 witness monuments. If in disagreement with previously established corner, show the distances between the two corners and also indicated ties to disputed corner.



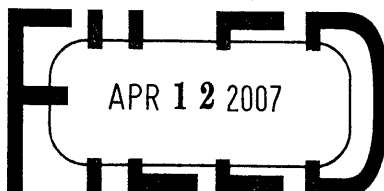
(i) I certify that the corner location on this record was determined by me or under my direction and control and that this U.S. Public Land Survey Monument Record is correct and complete to the best of my knowledge and belief.

Harry B. Warden
Signature

December 19, 1995
Date

INDEX # 2-9
T 361 R 4E

Filed for record in Lincoln County Surveyor's Office on _____ Date 3604320000



At _____ O'Clock _____ M
U.S. PUBLIC LAND SURVEY MONUMENT RECORD
REGISTER OF DEEDS

NOTE: This form is intended and designed to fulfill all requirements of Wisconsin Administrative Code, Chapter A-E 7 .08 U.S. Public Land Survey Monument Record (3)(a)(b)(c)(d)(e)(f)(g)(h)(i). An additional sheet may be added if necessary to conform with said requirements.

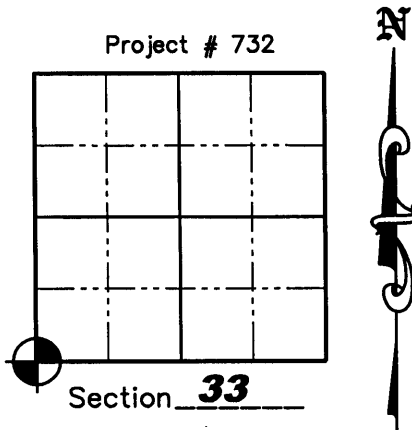
(a) Corner location: Township 36 North

Range 4 East

Town of LYNNE

County ONEIDA

Oneida County Northing 134865.217
Coordinates Easting 112766.405



(b)(f)(g)(h) Description of monument found at this corner and if it was accepted, state all evidence (material, testimonial, occupation, plats, records, other monuments) used as a basis for accepting. If not accepted or if nothing was found, state evidence used as a basis for establishing location. If reestablished through lost corner proportionate methods, indicate all monuments, distances and directions used to establish. Indicate type of monument found or set and sign post.

7/1864- Alex Anderson, set wood post at Section Corner. B.T.'s; Hemlock 10", N50°W 19lks; Hemlock 10", N55°E 47 lks.; Hemlock 9", S10°E, 10 lks.; Hemlock 9", S33°W, 27 lks.

6/1/1905- D.H. Vaughan ran East from S 1/4 Corner of Section 32 and fell 1/2 link from corner which he set in road from SE B.T. (a stub 6 feet high marks plain) and stump of NE B.T.; New B.T.'s set: W. pine stump 34" S76°E, 33 lks, Hemlock stump 24" S37°W 64.25 lks.

11/1/1914- D.H. Vaughan found an iron monument ran East.

8/21/1916- D.H. Vaughan found an iron monument 2" by 2" by 18" in center of road and ran North.

9/24/1923- D.S. Burnett ran West from S 1/4 corner of Section 33, 39.99 Chains and found all B.T.'s gone, but a 2" by 2" by 18" iron monument at the intersection of highways in place. He set a new monument for the corner and took bearings to the following: East face of North wing wall of culvert N86°10'W, 1.42 1/4 chains; NW corner of foundation under main building of Town Hall, S27°35'E, 1.27 Chains

01/15/1973- Robert H. Winat, RLS S-1040, re-established corner from the iron pin set 33 feet North by the Division of Highways and A.W. Kordick, Lincoln Co. Surveyor in 1945, even though this location was about 4 feet longer than D.S. Burnett's from the North one-quarter corner of Section 4. The corner fits the road intersections and Burnett's ties to the ditch and Town Hall building. Set 36" Lincoln Co. Berntsen Monument 1' North of centerline of U.S. Hwy "8". Ties: PK & disk in 15" Elm N19°E, 75.55'; PK & disc in 6" White Birch N28°W, 75.18'; 1-1/8" dia. iron bar N05°W, 33.00'; L-mark on NE corner North end concrete box culvert N74°W, 98.84'; L-mark on SE corner South end concrete box culvert S67°W, 98.80'; concrete block corner at metal siding Northwest corner Town garage building S34°E, 102.62'.

12/19/1995- Harry B. Warden, RLS S-2182, found no monument at corner location and re-established corner using record dimension from corner of town shop and distance stamped on WDOT Reference Monument Southwest. He set a Berntsen Survey Nail and set 7/8" rebar with Lincoln County aluminum caps for witness monuments: N02°38'06"W, 64.45', N63°23'02"E, 97.60' and S36°57'25"E, 67.24'

8/24/2006- Matthew E. Hogle, R.L.S. S-1910, found D.O.T. aluminum witness monument, 2 of the 3 Lincoln County Witness Monuments and the NW building corner. We set a PK nail at corner location as shown on Sheet 2 hereof. Oneida County coordinates determined from total station traverse from GPS pair surveyed by Jeff Austin R.L.S.

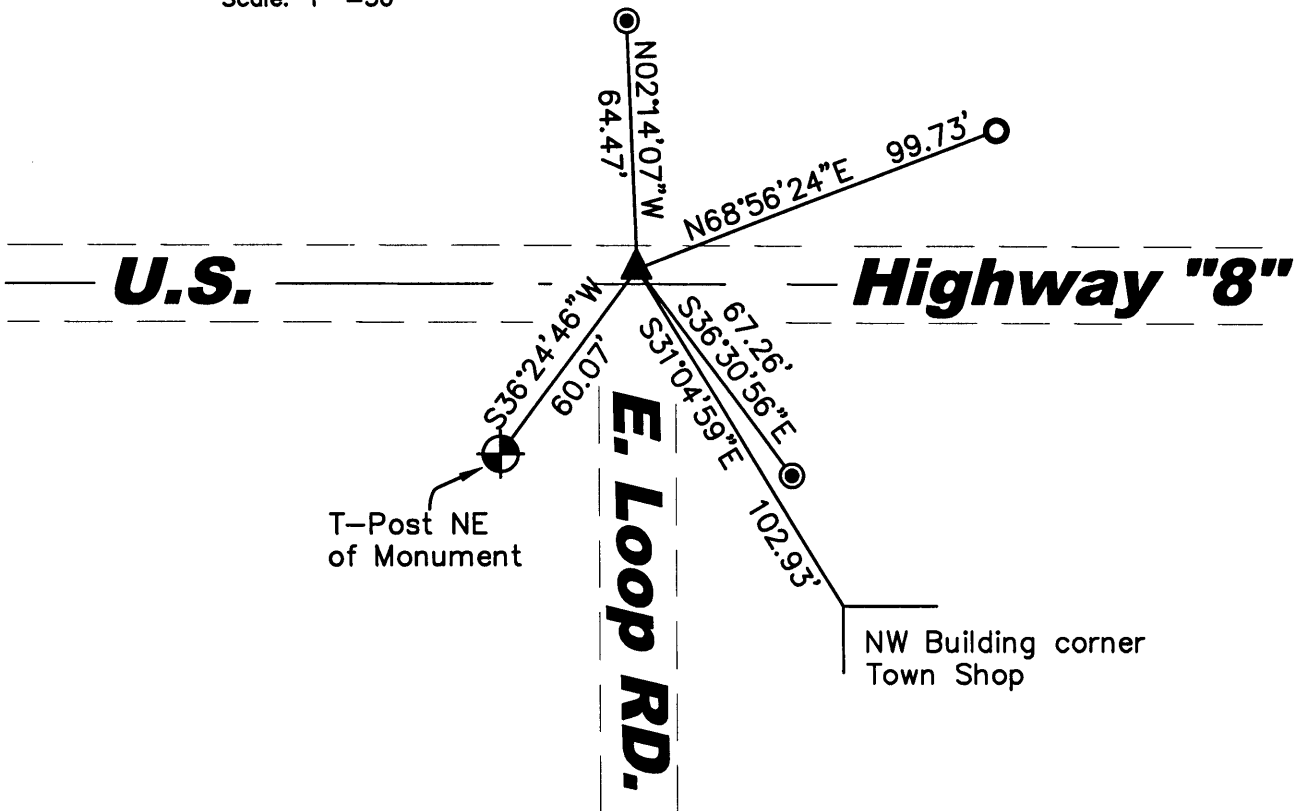
6-2-9

U.S. PUBLIC LAND SURVEY MONUMENT RECORD

(c)(d)(e) Plan view of corner with ties to at least 4 witness monuments. If in disagreement with previously established corner, show the distances between the two corners and also indicate the ties to the disputed corner.




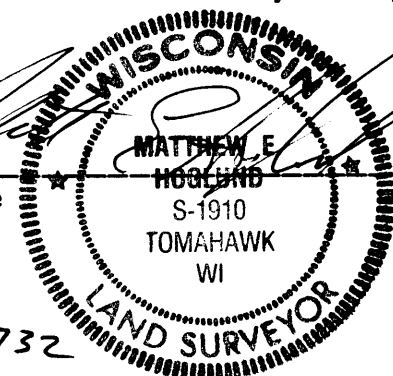
Scale: 1" = 50'



LEGEND

- ▲ Set P.K. Nail
- 3/8" Iron Rebar Found
- ⊙ Aluminum Capped 7/8" Iron Rebar Reference Mon. Found
- ⊕ D.O.T. Aluminum Reference Mon. Found

(i) I, Matthew E. Hoglund, certify that the corner location on this record was determined by me under my direction and control and that this U.S. Public Land Survey Monument is correct and complete to the best of my knowledge and belief.


 Signature _____ Date 10/12/2006


Sheet 2 of 2

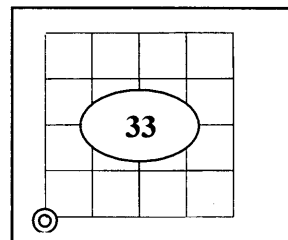
Proj. # 732

3604320000

U.S. PUBLIC LAND SURVEY MONUMENT RECORD

Note: This form is intended and designed to fulfill all requirements of Wisconsin Administrative Code Chapter A-E 7.08 (3) (a-i).

(a) Corner : South West
 Section: 33
 Township: 36 N.
 Range: 04 E.
 Town: Lynne
 County: Oneida



(b) History of Original Corner

Original Surveyor	Alexander Anderson	Original B.T.'s	
Date of Survey	1864	10" Hemlock	N50°W 19 links
		10" Hemlock	N55°E 47 links
		9" Hemlock	S10°E 10 links
		9" Hemlock	S33°W 27 links

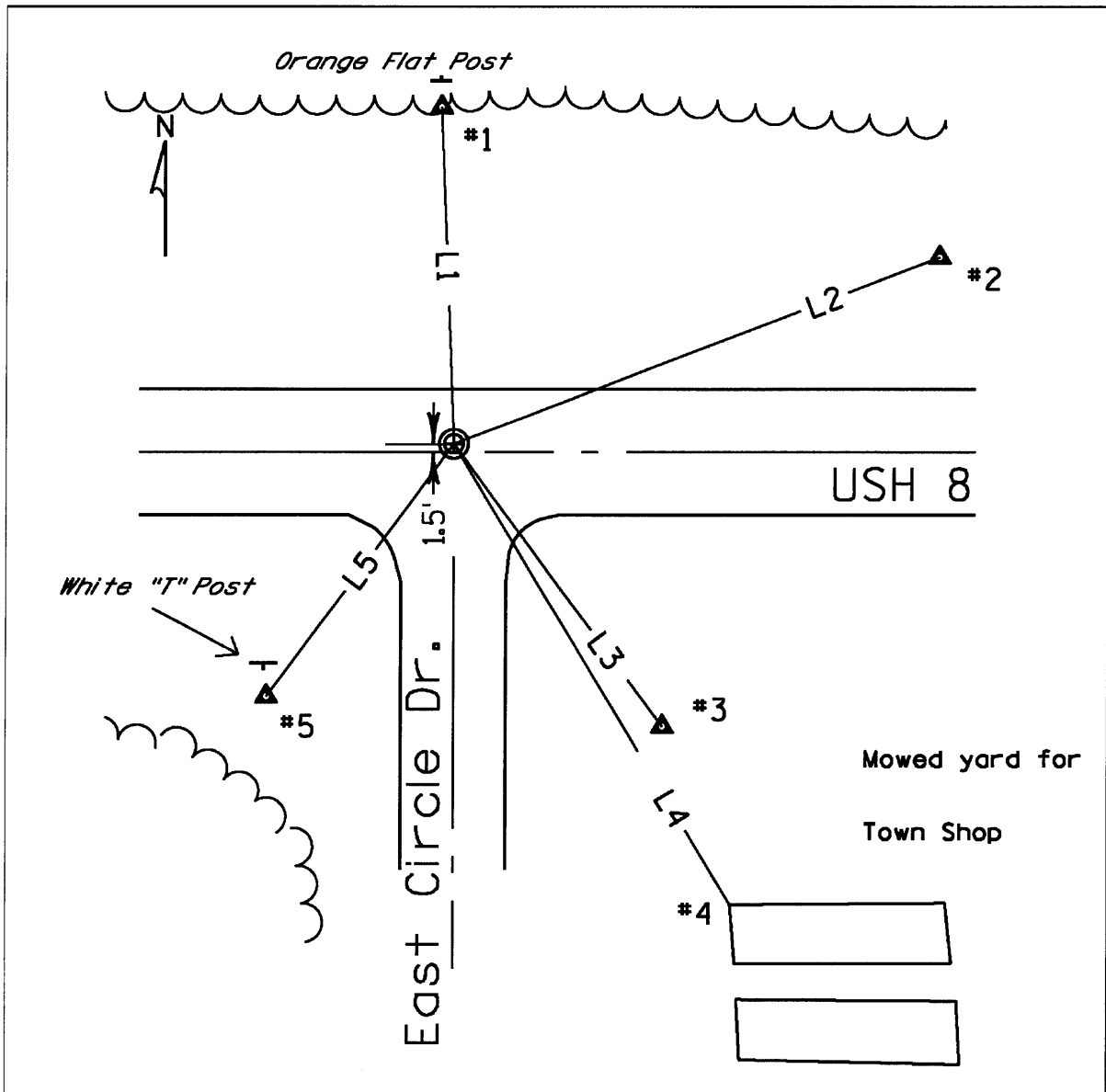
- In 1864 Alexander Anderson/GLO set a wood post as original section corner and made the above ties, all are now obliterated.

(f)(g)(h) Description of monument found at this corner and if it was accepted, state all evidence (material, testimonial, occupational, plats, records, and other monuments) used as a basis for establishing location. If reestablished through last corner proportionate methods, indicate all monuments, distances and directions used to establish. Indicate type of monument and signpost found or set.

- On 6/01/1905 D.H. Vaughan ran East from S ¼ Corner of Section 32 and fell ½ link from corner which he set in road from SE B.T. (a stub 6 feet high marks plain) and stump of NE B.T.; New B.T.s set: W. Pine stump 34" S 76°E, 33 links; Hemlock stump 24" S 37°W, 64.25 links.
- On 11/01/1914 D.H. Vaughan found an iron monument ran East.
- On 8/21/1916, D.H. Vaughan found an iron monument 2" by 2" by 18" in center of road and ran North.
- On 9/24/1923 D.S. Burnet ran West from S ¼ corner of Section 33, 39.99 Chains and found all B.T.'s gone, but a 2" by 2" by 18" iron monument at the intersection of highways in place. He set a new monument for the corner and took bearings to the following: East face of North wing wall of culvert N86°10'W, 1.42 ¼ chains; NW corner of foundation under main building of Town Hall, N 27°35'E, 1.27 Chains
- On 1/15/1973 Robert H. Winat /RLS S-1040, re-established corner from the iron pin set 33' North by the Division of Highways and A.W. Kordick, Lincoln Co. Surveyor in 1945, even though this location was about 4 feet longer than D.S. Burnett's from the North one-quarter corner of Section 4. The corner fits the road intersections and Burnett's ties to the ditch and Town building. He set a 36" Lincoln Co. Berntsen monument 1' North of the centerline of Hwy 8. Ties: PK and Disk in 15" Elm N19°E, 75.55'; PK and Disk in 6" White Birch N28°W, 75.18'; 1 1/8" diam. Iron bar N05°W, 33.00'; L-mark on N.E. corner North end concrete box culvert N 74°W, 98.84'; L-Mark on S.E. corner South end concrete box culvert S 67°W, 98.80'; concrete block corner at metal siding Northwest corner Town garage building S 34°E, 102.62'.
- On 12/19/1995 Harry B Warden/RLS S-2182, found no monument at the corner location and re-established corner using record dimension from corner of town shop and distance stamped on Wis. D.O.T. Reference Monument Southwest. He set a Berntsen Survey Nail and set 7/8" rebar with Lincoln County alum. Caps for witness monuments: N 02°38'06", 64.45'; N 63°23'02"E, 97.60' and S 36°57'25"E, 67.24'.
- On 8/24/2006 Matthew E. Hoglund, R.L.S. S-1910, found D.O.T. aluminum witness monument, 2 of the 3 Lincoln County Witness Monuments and the NW building corner. He set a PK nail at the corner location as shown on Tie sheet #Z9 (3604320000).
- In summer of 2008 the corner was obliterated due to Highway mill and over lay construction. In Oct. 2008 I (Allen P. Oleink RLS #2619 WI D.O.T.) reset a survey nail flush with highway pavement, based on the record distances from witness monuments shown on Hoglund's Tie sheet.

3604320000

(c)(d)(e) Plan view of corner with ties to at least 4 witnesses. If in disagreement with previously established corner, show the distance between the two corners and also indicate the tie to the disputed corner.



LEGEND:

-Corner is a survey nail set flush into pavement 1.5' North of paved C/L

#1-Alum. Capped 7/8" Iron Rebar Reference Monument found With an orange composite "flat" post set behind.

#2-3/8" Iron Rebar found.

#3- Alum. Capped 7/8" Iron Rebar Reference Monument found

#4- N.W. Concrete corner of Town Shop found.

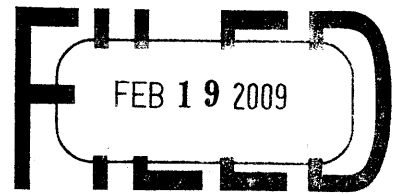
#5-D.O.T. Alum. Reference Mon. found. With a White composite "T" post set on the North West side.

COURSE TABLE:

Bearings orientated to Oneida Co. Coordinate system NAD 83 (1991)

L1	N2°09'42"W	64.47'
L2	N68°59'51"E	99.73'
L3	S36°27'24"E	67.26'
L4	S31°00'51"E	102.93'
L5	S36°26'32"W	60.07'

REGISTER OF DEEDS OFFICE
ONEIDA COUNTY, WIS.

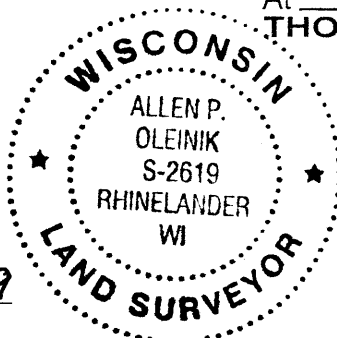


At _____ O'Clock _____ M
THOMAS H. LEIGHTON
REGISTER OF DEEDS

(i) I, Allen P Oleinik, Registered Land Surveyor No 2619, hereby Certify that the corner location on this record was referenced by me and that this U.S. Public Land Survey Monument Record is correct and complete to the best of my knowledge and belief.

Allen P. Oleinik
Signature

2-17-09
Date



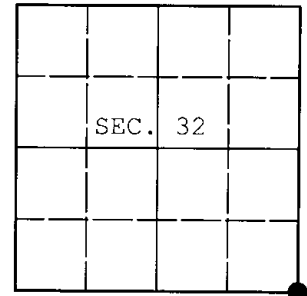
Index No. Z-9

3604320000 2

U.S. PUBLIC LAND SURVEY MONUMENT RECORD

Note: This form is intended and designed to fulfill all requirements of Wisconsin Administrative Code, Chapter A-E 7.08 U.S. Public Land Survey Monument Record (3) (a) (b) (c) (d) (e) (f) (g) (h) (i). An additional sheet may be added if necessary to conform with said requirements.

(a) CORNER LOCATION: WISCRS - Oneida County
Cor. of Secs. 4, 5, 32 & 33 N: 134,865.08 USft
Township 35 & 36 North E: 112,766.41 USft
Range 4 East of the 4th P.M. Datum: NAD 1983(2011)
Town of Lynne County of Oneida



(b) HISTORY OF ORIGINAL CORNER ESTABLISHMENT

Original Surveyor: Original Accessories:
Date of Survey: Commenced:
Completed:

(b) (f) (g) (h) Description of monument found at this corner and if it was accepted, state all evidence (material, testimonial, occupational, plats, records, other monuments) used as a basis for accepting. If not accepted or if nothing was found, state evidence used as basis for establishing location. If re-established through lost corner proportionate methods, indicate all monuments, distances and directions used to establish. Indicate type of monument and sign post found or set.

NOTE: This is a perpetuation of a previous USPLS Monument Record by Matthew E. Hogle, RLS dated October 12, 2006 and filed in the office of the Oneida County Register of Deeds. A complete history of the corner can be found on the previous monument record. I accept the previous location as a true and faithful perpetuation or reestablishment of the original corner location and further perpetuate it as follows.

April 3, 2016: I found and accepted a perpetuation of the record monument, a Berntsen "Survey Mark" nail 1 ft. North of the centerline of U.S. Highway 8. The existing accessories were found in substantial agreement with the record and were not remeasured as the sole purpose of this work is to report the coordinates of the corner point.

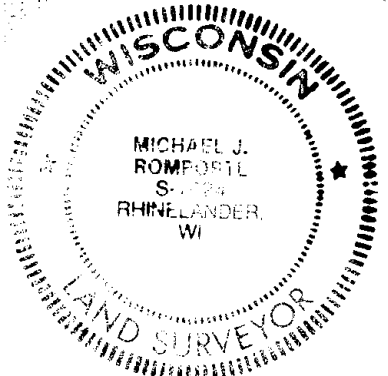
The coordinates shown were derived from two independent RTK observations of the corner point and are referenced to the WISCRS GNSS Network.

(c) (d) (e) Plan view of corner with ties to at least 4 witness monuments. If in disagreement with previously established corner, show the distances between the two corners and also indicate the ties to the disputed.

REGISTER OF DEEDS OFFICE
ONEIDA COUNTY
FILED

DEC 28 2016

AT _____ O'CLOCK _____ M
KYLE J. FRANSON
REGISTER OF DEEDS



(i) I, Michael J. Romportl, Professional Land Surveyor No. S-1624, hereby certify that the corner location on this record was determined by me or under my direction and control and that this U.S. Public Land Survey Monument Record is correct and complete to the best of my knowledge and belief.

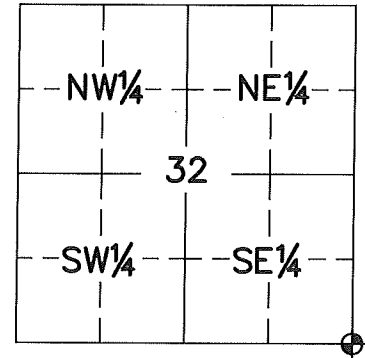
Michael J Romportl 12/23/2016
Signature Date

U.S. PUBLIC LAND SURVEY MONUMENT RECORD ONEIDA COUNTY, WISCONSIN.

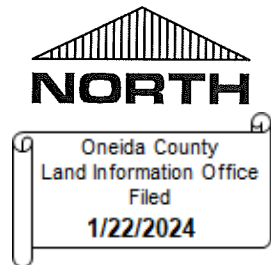
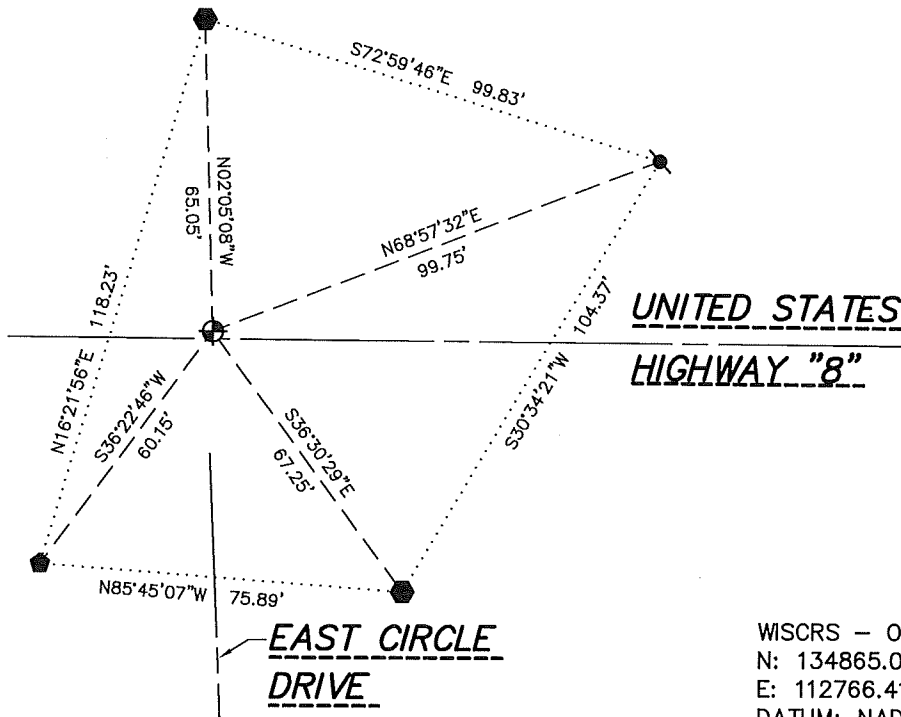
in accordance with Wisconsin Administrative Code, Chapter A-E 7.08 (3) (a)-(i) SIDE 1 OF 2

LOCATION (a) The identity of the corner, as referenced to the U.S. Public Land Survey System.

SECTION 32 - TOWN 36 NORTH - RANGE 4 EAST
 TOWNSHIP OF _____ LYNNE _____
 TYPE OF CORNER _____ SOUTHEAST CORNER _____
 TYPE OF MONUMENT _____ 1" OUTSIDE DIAMETER SURVEY NAIL _____
 PLSS IDENTIFIER NUMBER _____ 3604320000 _____
 NORTHING _____ 134865.0800' _____
 EASTING _____ 112766.4100' _____



PLAN VIEW (c) Reference to at least 4 witness monuments. Witness monuments shall be concrete, natural stone, iron, bearing trees or other equally durable material, except wood other than bearing trees; (d) A plan view drawing depicting the relevant monuments and reference ties which is sufficient in detail to enable accurate relocation of the corner monument if the corner monument is disturbed; (e) A description of any material discrepancy between the location of the corner as restored or reestablished and the location of that corner as previously restored or reestablished;



LEGEND

- SET 1" OUTSIDE DIAMETER SURVEY NAIL
- FOUND ALUMINUM REFERENCE MONUMENT
- FOUND 3/8" REBAR
- FOUND ALUMINUM CAP MONUMENT

WISCORS - ONEIDA COUNTY
 N: 134865.0800'
 E: 112766.4100'
 DATUM; NAD83 (2011)
 GNSS METHOD RTN - DIRECT
 GNSS CONTROL WISCORS VRS

BEARING ORIENTATION:
 ONEIDA COUNTY GRID BEARINGS
 ROUNDED TO THE NEAREST 1 MINUTE
 HORIZONTAL SCALE: 1" = 40 FEET ±

RECOVERY PROCEDURES

SIDE 2 OF 2

(f) Whether the corner was restored through acceptance of an obliterated evidence location or a found perpetuated location;

LOCATION WAS PERPETUATED BY COUNTY COORDINATES AND FOUND SURVEY MARK NAIL FROM FIELD OBSERVATION, BY NATHAN S. FLAGSTAD, APRIL 19, 2023.

MICHEL J. ROMPORTL; DECEMBER, 2016:

FOUND SURVEY MARK NAIL 1' NORTH OF THE CENTERLINE OF HIGHWAY "8". THE EXISTING ACCESSORIES WERE FOUND IN SUBSTANTIAL AGREEMENT WITH THE RECORD AND WERE NOT REMEASURED AS THE SOLE PURPOSE OF THIS WORK WAS TO REPORT THE COORDINATES OF THE CORNER POINT.

NATHAN S. FLAGSTAD; NOVEMBER 2023:

SURVEY NAIL LIKELY DESTROYED DUE TO ROAD CONSTRUCTION OF UNITED STATES HIGHWAY "8". SET 1" OUTSIDE DIAMETER SURVEY NAIL IN ASPHALT AT COUNTY COORDINATE POSITION. NO NEW TIES SET, FOUR TIE MONUMENTS ARE FROM PREVIOUS TIE SHEET. NEW MEASUREMENTS ARE AS SHOWN.



SURVEYOR'S CERTIFICATE

Chapter 7.08 (3) (i)

I, NATHAN S. FLAGSTAD, HEREBY CERTIFY THAT THE U.S. PUBLIC LAND SURVEY MONUMENT RECORD SHOWN WAS DETERMINED BY ME OR UNDER MY DIRECTION AND IS CORRECT AND COMPLETE TO THE BEST OF MY KNOWLEDGE AND BELIEF.

1/22/2024

NATHAN S. FLAGSTAD
WISCONSIN PROFESSIONAL LAND SURVEYOR S-3166

DATE

Real Land Surveying
1356 International Drive.
Eau Claire, WI 54701

715-514-4116