

U.S. PUBLIC LAND SURVEY MONUMENT RECORD FOR LINCOLN COUNTY, WISCONSIN

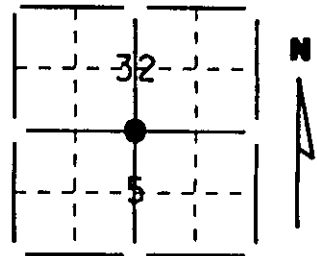
Note: This form is intended and designed to fulfill all requirements of Wisconsin Administrative Code, Chapter A-E 5.02, U.S. Public Land Survey Monument Record (3) (a) (b) (c) (d) (e) (f) (g) (h) (i). Use additional sheet if necessary.

(a) The section, one quarter corner common to sections 5 & 32,

Township(s) 35 & 36 N, Range(s) 4 E

State plane coordinates: N _____
S _____

Town/City/Village Somo
County Lincoln

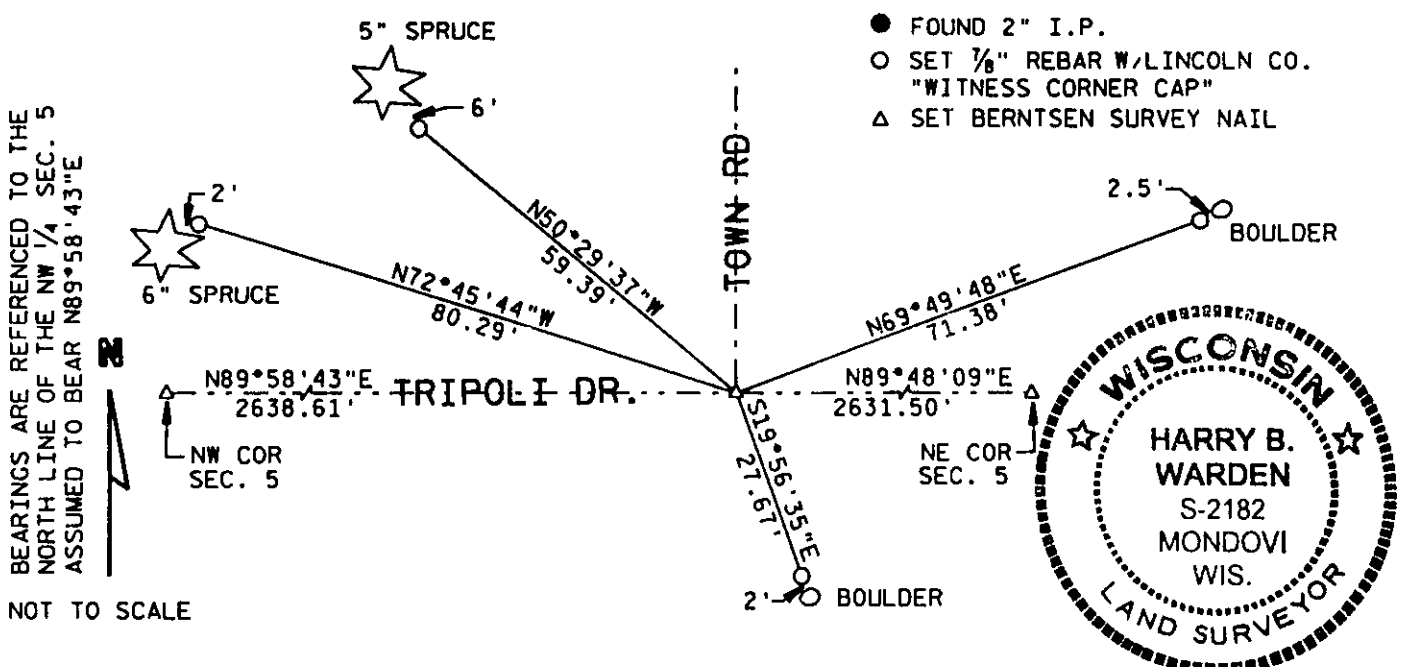


(b) (f) (g) (h) Description of monument found at this corner and if it was accepted, state all evidence (testimonial, occupational, plats, records, other monuments) used as a basis for accepting. If not accepted or nothing was found, state evidence used as a basis for establishing location and what was set. If reestablished through lost corner proportionate methods, indicate all monuments, distances and directions used.

Set Berntsen Survey Nail at occupied centerlines of Tripoli drive & town road to the north. Record distance south to U.S.H. 8 ft 4". Distances to occupied location of the NW cor. & re-established corner NE cor. of Sec. 5 matched fairly well. Frost conditions prevented excavation, so location is tentative until excavation can done.

RECEIVED AT LINCOLN COUNTY
COURTHOUSE THIS 19 DAY
OF Dec 1995
Patt Ruelke
TAX DESCRIPTION OFFICE

(c) (d) (e) Plan view of corner with ties to a least 4 witness monuments. If in disagreement with previously established corner, show the distances between the two corners and also indicated ties to disputed corner.



(i) I certify that the corner location on this record was determined by me or under my direction and control and that this U.S. Public Land Survey Monument Record is correct and complete to the best of my knowledge and belief.

Harry B. Warden
Signature

December 19, 1995
Date

3604320020

Filed for record in Lincoln County Surveyor's Office on _____

INDEX # 2-7

T-30N R4E

U.S. PUBLIC LAND SURVEY MONUMENT RECORD FOR LINCOLN COUNTY, WISCONSIN

Note: This form is intended and designed to fulfill all requirements of Wisconsin Administrative Code, Chapter A-E 5.02, U.S. Public Land Survey Monument Record (3) (a) (b) (c) (d) (e) (f) (g) (h) (i). Use additional sheet if necessary.

(a) The section, one quarter corner common to sections 32 & 5,

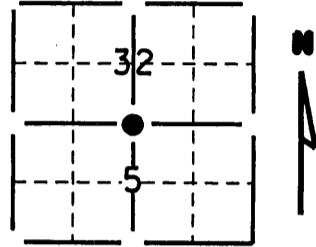
Township(s) 36 & 35 N, Range(s) 4 E

Lincoln County coordinates: N _____

E _____

Town/City/Village Somo, Lynne

County Lincoln, Oneida



(b) (f) (g) (h) Description of monument found at this corner and if it was accepted, state all evidence (testimonial, occupational, plats, records, other monuments) used as a basis for accepting. If not accepted or nothing was found, state evidence used as a basis for establishing location and what was set. If reestablished through lost corner proportionate methods, indicate all monuments, distances and directions used.

EXCAVATED AT INTERSECTION OF TOWN ROADS. FOUND A LARGE IRON MONUMENT (RR BRAKE SHOE?) APPROXIMATELY 2' BELOW GRADE, AND 2' SOUTH AND 1' EAST OF C-C TOWN ROADS. DISTANCES TO SECTION CORNERS EAST & WEST FIT RECORD MEASUREMENTS WELL. ACCEPTED AS CORNER LOCATION.

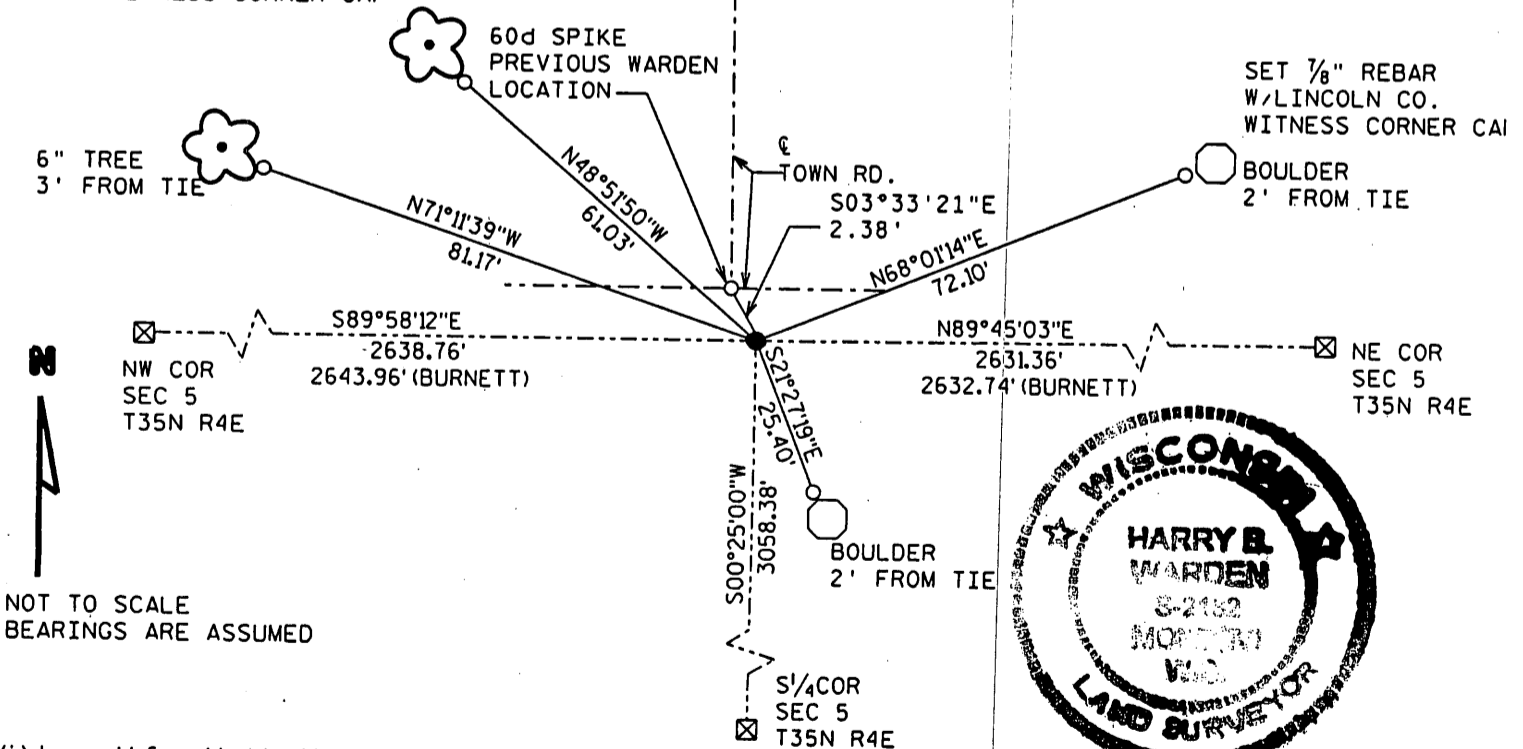
(c) (d) (e) Plan view of corner with ties to a least 4 witness monuments. If in disagreement with previously established corner, show the distances between the two corners and also indicated ties to disputed corner.

LEGEND:

PLSS MONUMENT AS NOTED

● SET BERNTSEN 3/2" ϕ ALUM. MON.

○ SET 7/8" REBAR W/LINCOLN CO. "WITNESS CORNER CAP"



NOT TO SCALE
BEARINGS ARE ASSUMED

(i) I certify that the corner location on this record was determined by me or under my direction and control and that this U.S. Public Land Survey Monument Record is correct and complete to the best of my knowledge and belief.

Harry B. Warden
Signature

6.8.2010
Date

INDEX # Z-7
T36N R4E

Filed for record in Lincoln County Surveyor's Office on _____

Date 3604320020

3604320020

REGISTER OF DEEDS OFFICE
ONEIDA COUNTY, WIS.

FILED
JUN 21 2010

At _____ O'Clock _____ M.
THOMAS H. LEIGHTON
REGISTER OF DEEDS