

U.S. PUBLIC LAND SURVEY MONUMENT RECORD

NOTE: This form is intended and designed to fulfill all requirements of Wisconsin Administrative Code, Chapter A-E 7 .08 U.S. Public Land Survey Monument Record (3)(a)(b)(c)(d)(e)(f)(g)(h)(i). An additional sheet may be added if necessary to conform with said requirements.

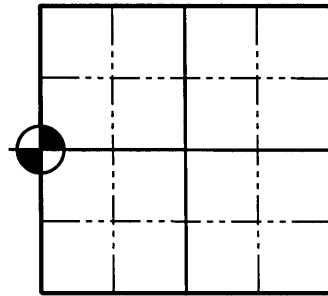
(a) Corner location: Township 36 North

Range 4 East

Town of LYNNE

County ONEIDA

Project # 732



Section 33

(b)(f)(g)(h) Description of monument found at this corner and if it was accepted, state all evidence (material, testimonial, occupation, plats, records, other monuments) used as a basis for accepting. If not accepted or if nothing was found, state evidence used as a basis for establishing location. If reestablished through lost corner proportionate methods, indicate all monuments, distances and directions used to establish. Indicate type of monument found or set and sign post.

1865- Edward D. Palmer, set 1/4 Section Corner. B.T.'s; Hemlock 5", S20°E 9lks; W. Pine 20", S55°W 12 lks.

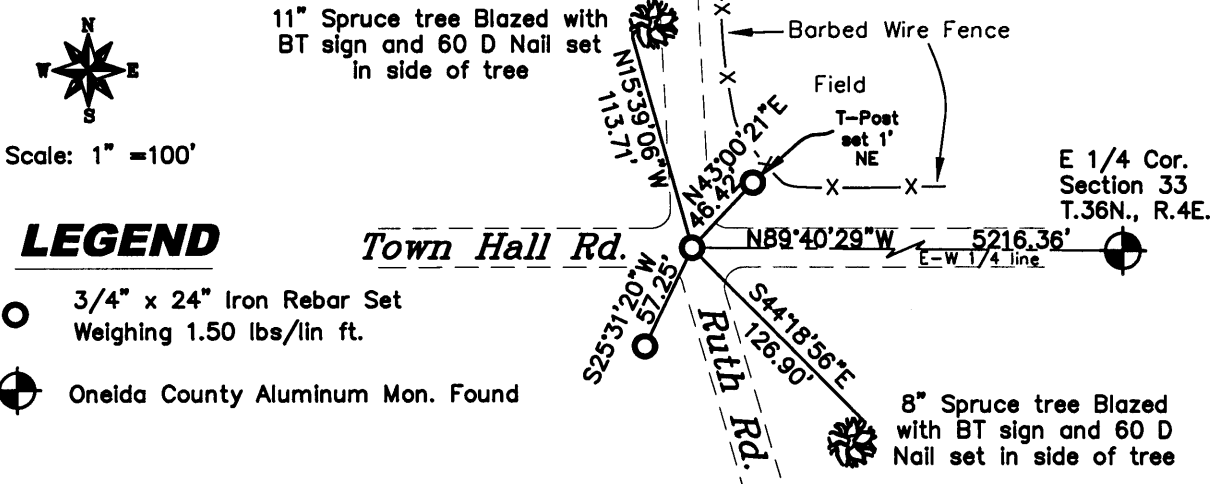
6/01/1905- D.H. Vaughan, visited corner and found both bearing trees had been grubbed out but found stump of Hemlock and roots of both trees. J.M. Smith and Victor Wironon said they knew location of original B.T.'s. He set 1/4 post and new B.T.'s: W. Pine stump. 30", S31°E 53lks.

7/07/1908- D.H. Vaughan went to corner in centerline of road which had had previously set as an iron pin and ran North.

6/9/1965- F.R. Wincentsen shows W 1/4 Corner in centerline of Town Hall Road on map in F.R. Wincentsen Book #1 page 19.

8/14/2006- Matthew E. Hoglund, RLS S-1910, found a railroad spike 10" below the centerline intersection of Town Hall Road and Ruth Road. We replaced the railroad spike with a 3/4" by 24" iron rebar, 10" below the gravel road and set ties as shown below.

(c)(d)(e) Plan view of corner with ties to at least 4 witness monuments. If in disagreement with previously established corner, show the distances between the two corners and also indicate the ties to the disputed corner.



LEGEND

- 3/4" x 24" Iron Rebar Set Weighing 1.50 lbs/lin ft.
- ⊙ Oneida County Aluminum Mon. Found

(i) I, Matthew E. Hoglund, certify that the corner location on this record was determined by me under my direction and control and that this U.S. Public Land Survey Monument is correct and complete to the best of my knowledge and belief.

Signature _____ Date 10/12/2006
Proj. # 732

WISCONSIN
 MATTHEW E. HOGGLUND
 S-1910
 TOMAHAWK
 WI
 LAND SURVEYOR

REGISTER OF DEEDS OFFICE
ONEIDA COUNTY, WIS.

FILED

APR 12 2007

At _____ O'Clock _____ M
THOMAS H. LEIGHTON
 REGISTER OF DEEDS

3604322000