

CERTIFIED LAND CORNER RESTORATION

Index No. Z-13

SE Cor 33-36-4
From Lincoln City Files

State of Wisconsin }
County of Lincoln } ss.

I, Robert H. Winat, do hereby certify that on the 15th day of January, 1973, I found evidence of the northeast section corner of Section 4 Township 35, North, Range 4 East, Fourth, Principal Meridian, as described hereon; and that from this evidence I established a new monument and accessories as described hereon to perpetuate the ~~original~~ location of this corner.

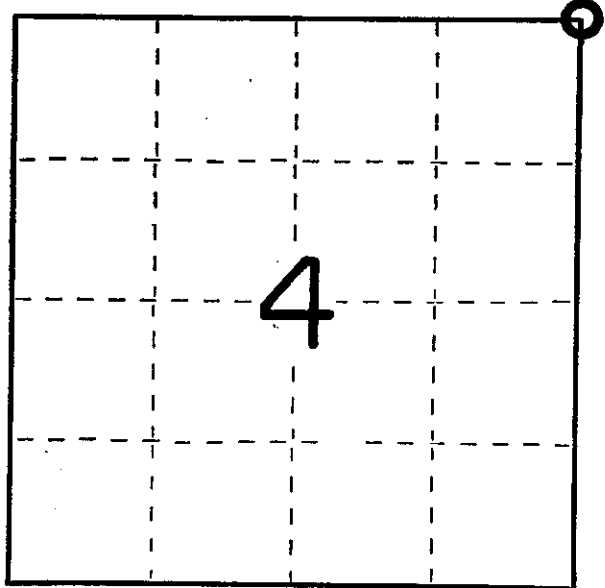
Resident witnesses:

History of original corner establishment:
Surveyor: Alex Anderson
Date: July, 1864
Monumentation: Wood post
Witnesses: 12" Birch N55°W, 11 lks.
24" W. Pine N38°E, 48 lks.
12" Birch S38°E, 17 lks.
10" Fir S34°W, 18 lks.

Description of corner evidence found:

This corner was re-established by using the northeast corner of Section 3 and the north one-quarter corner of Section 3 as re-established by use of D. S. Burnett's 1923 resurvey and the Division of Highway's survey of 1925 and the north one-quarter of Section 4 as perpetuated. The north line of Section 3 was projected westerly for the proportioned distance between the one-quarter corners as found in D. S. Burnett's 1923 resurvey. This location checks the information on the east line of Section 4 as noted in Burnett's resurvey notes, although the Division of Highways' 1925 and 1945 surveys indicate a point NE'ly. 6 feet. The iron rod set by the Division of Highways & A.W. Kordick was not found. Description of monument and accessories I established to perpetuate the ~~original~~ location of this corner. Berntsen monument 36" 4 feet north of centerline U.S. Highway "8"

- PK nail in 3" Balsam N45°W, 65.17'
- PK nail in 8" N. Pine S17°W, 245.00'
- 1" RHW capped iron pipe S3°E, 60.21'
- 1" RHW capped iron pipe S3°E, 104.21'



○ = Corner monument restored.

Dated at Minocqua, Wis., this 17 day of November, 1974

Signature Robert H. Winat Title Land Surveyor Registration No. S-1040
(County Surveyor, Registered Land Surveyor, or other duly authorized official)

Office of Register of Deeds, County of _____, I hereby certify that the within instrument was filed in this office for record on the _____ day of _____, 19____ at _____ o'clock _____ M.

(Register of Deeds)

By _____ Deputy

3604330000

U.S. PUBLIC LAND SURVEY MONUMENT RECORD

NOTE: This form is intended and designed to fulfill all requirements of Wisconsin Administrative Code, Chapter A-E 7 .08 U.S. Public Land Survey Monument Record (3)(a)(b)(c)(d)(e)(f)(g)(h)(i). An additional sheet may be added if necessary to conform with said requirements.

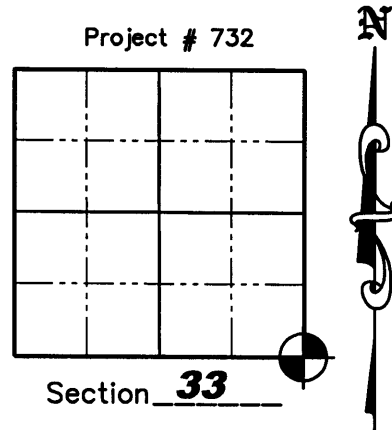
(a) Corner location: Township 36 North

Range 4 East

Town of LYNNE

County ONEIDA

Oneida County Northing 134838.212
Coordinates Easting 118024.325



(b)(f)(g)(h) Description of monument found at this corner and if it was accepted, state all evidence (material, testimonial, occupation, plats, records, other monuments) used as a basis for accepting. If not accepted or if nothing was found, state evidence used as a basis for establishing location. If reestablished through lost corner proportionate methods, indicate all monuments, distances and directions used to establish. Indicate type of monument found or set and sign post.

7/1864— Alex Anderson, set wood post; B.T.'s: Birch 12", N55°W 11lks; W. Pine 24", N38°E 48 lks.; Birch 12", S38°E, 17 lks.; Fir 10", S34°W, 18 lks.

9/12/1923— D.S. Burnett identified corner on Township line by one original government BT: W. Pine 24" N38°E 48 lks.; New BT: W. Pine 16" N16°15'W 21lks.

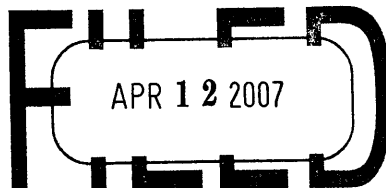
1/15/1973— Robert H. Winat, RLS S-1040, re-established this corner by using the Northeast corner of Section 3 and the North one-quarter corner of Section 3 as re-established by use of D.S. Burnett's 1923 resurvey and the Division of Highway's survey of 1925 and the North one-quarter corner of Section 4 as perpetuated. The North line of Section 3 was projected Westerly for the proportioned distance between the one-quarter corners as found in D.S. Burnett's 1923 resurvey. This location checked the information on the East line of Section 4 as noted in Burnett's resurvey notes, although the Division of Highway's 1925 and 1945 surveys indicate a point Northeasterly 6 feet. The iron rod set by the Division of Highways & A.W. Kordick was not found. He set a 36" Berntsen monument 4 feet North of the centerline of U.S. Highway "8" and set reference monuments as follows: PK nail in 3" Balsam N45°W, 65.17'; PK nail in 8" N. Pine S17°W, 245.00'; 1" RHW capped iron pipe S03°E, 60.21'; 1" RHW capped iron pipe S03°E, 104.21'.

6/13/1983— Jack Wallin, Survey Crew Chief Wisconsin D.O.T., shows the corner location in U.S. Highway "8" and set 4 Berntsen aluminum witness monuments as follows: N30°06'W, 60.65'; N22°30'E, 49.67'; S30°06'E, 63.30'; S22°30'W, 57.74'.

8/14/2006— Matthew E. Hoglund, R.L.S. S-1910, found 4 D.O.T. aluminum witness monuments and set a PK nail at the corner location as shown on Sheet 2 hereof. Oneida County coordinates determined from total station traverse from GPS pair surveyed by Jeff Austin R.L.S.

2-13

REGISTER OF DEEDS OFFICE
ONEIDA COUNTY, WIS.



At _____ O'Clock _____ M
THOMAS H. LEIGHTON
REGISTER OF DEEDS

Sheet 1 of 2

Proj. # 732a

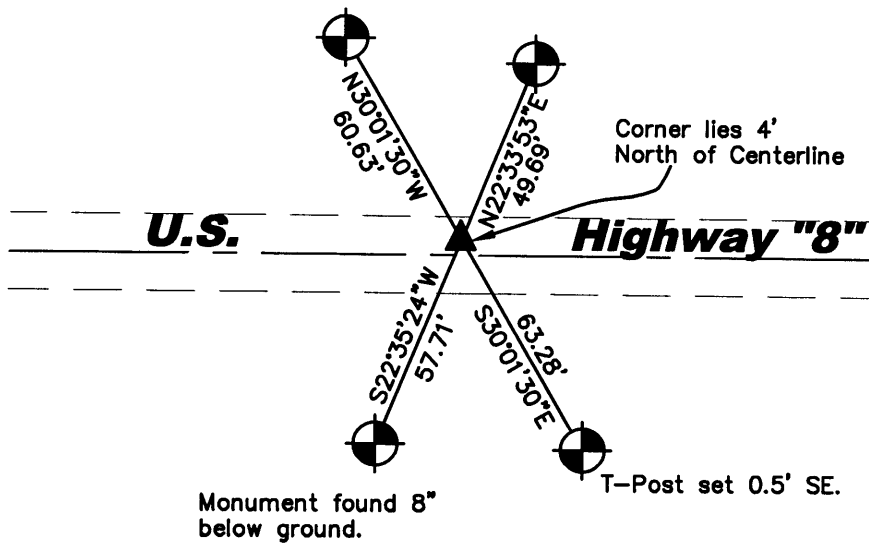
3604330000

U.S. PUBLIC LAND SURVEY MONUMENT RECORD

(c)(d)(e) Plan view of corner with ties to at least 4 witness monuments. If in disagreement with previously established corner, show the distances between the two corners and also indicate the ties to the disputed corner.



Scale: 1" = 50'



LEGEND


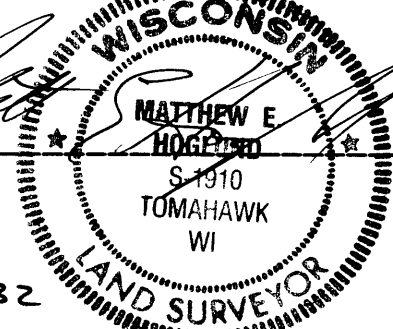


D.O.T. Aluminum Reference Mon. Found



Set P.K. Nail

(i) I, Matthew E. Hogleund, certify that the corner location on this record was determined by me under my direction and control and that this U.S. Public Land Survey Monument is correct and complete to the best of my knowledge and belief.


 Signature _____ Date 10/12/2006

 Proj. #732

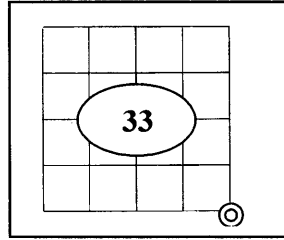
Sheet 2 of 2

360433 0000

U.S. PUBLIC LAND SURVEY MONUMENT RECORD

Note: This form is intended and designed to fulfill all requirements of Wisconsin Administrative Code Chapter A-E 7.08 (3) (a-i).

(a) Corner: South East
 Section: 33
 Township: 36 N.
 Range: 04 E.
 Town: Lynne
 County: Oneida



(b) History of Original Corner

Original Surveyor	Alexander Anderson	Original B.T.'s	
Date of Survey	1864	12" Birch	N55°W 11 links
		24" White Pine	N38°E 48 links
		12" Birch	S38°E 17 links
		10" Fir	S34°W 18 links

- In 1864 Alexander Anderson/GLO set a wood post as original section corner and made the above ties, all are now obliterated.

(f)(g)(h) Description of monument found at this corner and if it was accepted, state all evidence (material, testimonial, occupational, plats, records, and other monuments) used as a basis for establishing location. If reestablished through last corner proportionate methods, indicate all monuments, distances and directions used to establish. Indicate type of monument and signpost found or set.

- On 9/12/1923 D.S. Burnet identified corner on Township line by one original government B.T.; W. Pine 24" N38°E 48 links; New B.T.: W. Pine 16" N16°15'W 21 links.
- On 1/15/1973 Robert H. Winat /RLS re-established the corner by using the North east corner of Section 3 and the North ¼ corner of Section 3 as re-established by use of D.S. Burnett's 1923 resurvey and the Division of Highways survey of 1925 and the North ¼ corner Section 4 as perpetuated. The North lone of Section 3 was projected Westerly for the proportioned distance between the ¼ corners as found in D.S. Burnett's 1923 resurvey. This location checked the information on the East line of Section 4 as noted in Burnett's resurvey notes, although the Division of Highways 1925 and 1945 surveys indicate a point North easterly 6 feet. The iron rod set by Division of Highways & A.W. Kordick was not found. He set a 36" Berntsen monument 4 feet North of the C/L of USH 8 and set reference monuments as follows: PK nail in 3" Balsam N45° W, 65.17'; PK nail in 8" N. Pine S17°W, 245.00'; 1" RHW capped iron pipe S3°E, 60.21'; 1" RHW capped iron pipe S3°E, 104.21'.
- On 6/13/1983 Jack Wallin, Wis. DOT survey crew chief shows the corner location in U.S.H. 8 and set 4 Berntsen Alum. Witness Monuments as follows: N 30°06'W, 60.65'; N 22°30'E, 49.67'; S 30°06'E, 63.30'; and S 22°30'W, 57.74'.
- On 8/14/2006 Matthew E. Hoglund, R.L.S. S-1910, found 4 D.O.T. aluminum witness monuments and set a P.K. nail at the corner location as shown on Tie sheet #Z13 (3604330000).
- In summer of 2008 the corner was obliterated due to Highway mill and over lay construction. In Oct. 2008 I (Allen P. Oleink RLS #2619 WI D.O.T.) reset a survey nail flush with highway pavement, based on the record distances from witness monuments shown on Hoglund's Tie sheet.

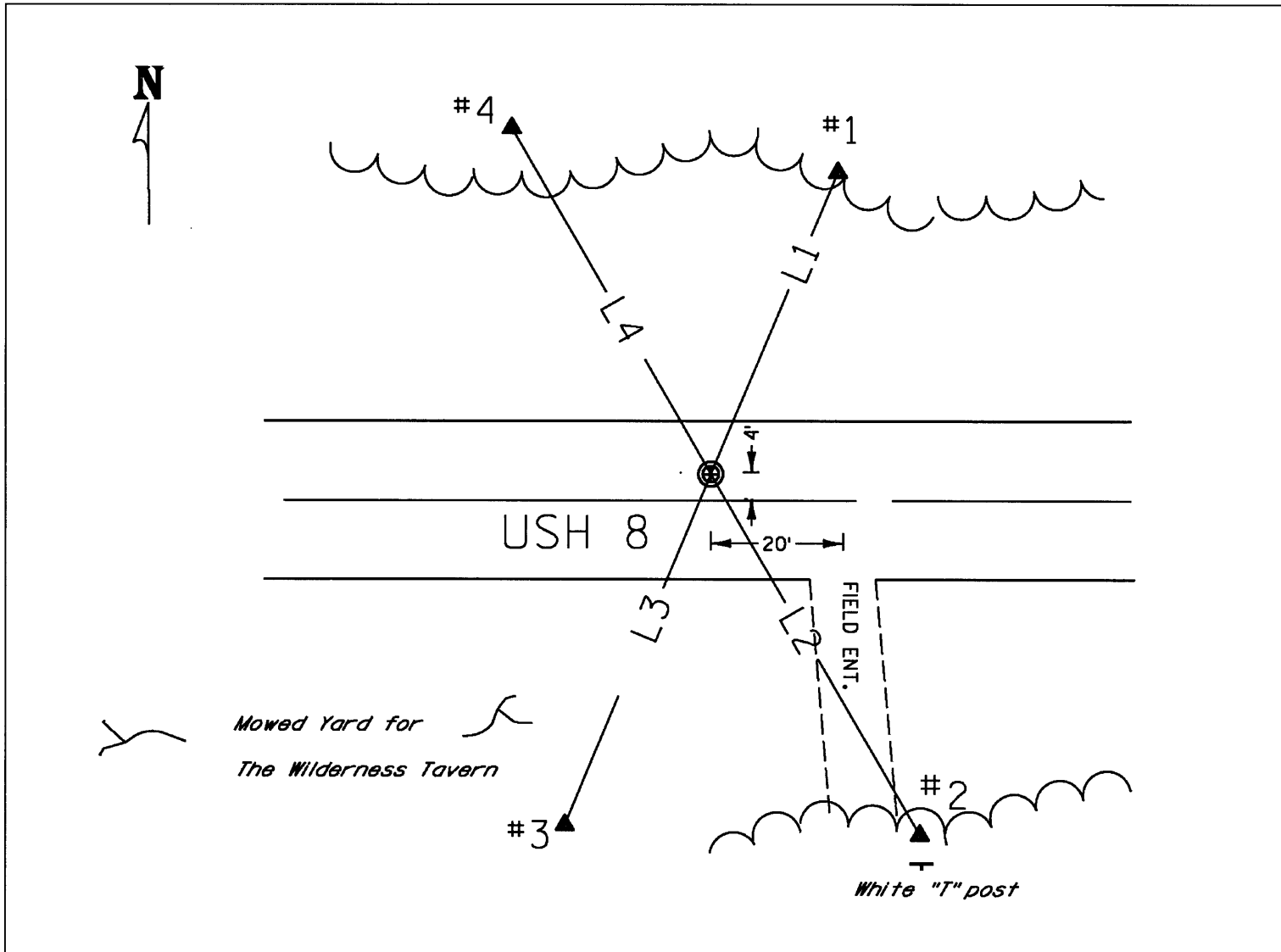
REGISTER OF DEEDS OFFICE
 ONEIDA COUNTY, WIS.

FILED
 FEB 19 2009

At _____ O'Clock _____ M
THOMAS H. LEIGHTON
 REGISTER OF DEEDS

360433 0000

(c)(d)(e) Plan view of corner with ties to at least 4 witnesses. If in disagreement with previously established corner, show the distance between the two corners and also indicate the tie to the disputed corner.



LEGEND:

- Corner is a survey nail set flush into pavement
- #1, #2, #3, & #4 - D.O.T. Alum. Reference Monuments found.

COURSE TABLE:

Bearings orientated to Oneida Co. Coordinate system NAD 83 (1991)

L1	N22°47'17"E	49.69'
L2	S30°05'21"E	63.28'
L3	S22°28'27"W	57.71'
L4	N29°51'03"W	60.63'

(i) I, Allen P Oleinik, Registered Land Surveyor No 2619, hereby Certify that the corner location on this record was referenced by me and that this U.S. Public Land Survey Monument Record is correct and complete to the best of my knowledge and belief.

Allen P. Oleinik 2-17-09
Signature Date



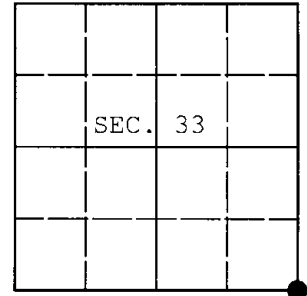
Index No. 2-13

3604330000

U.S. PUBLIC LAND SURVEY MONUMENT RECORD

Note: This form is intended and designed to fulfill all requirements of Wisconsin Administrative Code, Chapter A-E 7.08 U.S. Public Land Survey Monument Record (3) (a) (b) (c) (d) (e) (f) (g) (h) (i). An additional sheet may be added if necessary to conform with said requirements.

(a) CORNER LOCATION: WISCRS - Oneida County
Cor. of Secs. 3, 4, 33 & 34 N: 134,838.26 USft
Township 35 & 36 North E: 118,024.24 USft
Range 4 East of the 4th P.M. Datum: NAD 1983(2011)
Town of Lynne County of Oneida



(b) HISTORY OF ORIGINAL CORNER ESTABLISHMENT

Original Surveyor: Original Accessories:
Date of Survey: Commenced:
Completed:

(b) (f) (g) (h) Description of monument found at this corner and if it was accepted, state all evidence (material, testimonial, occupational, plats, records, other monuments) used as a basis for accepting. If not accepted or if nothing was found, state evidence used as basis for establishing location. If re-established through lost corner proportionate methods, indicate all monuments, distances and directions used to establish. Indicate type of monument and sign post found or set.

NOTE: This is a perpetuation of a previous USPLS Monument Record by Matthew E. Hogle, RLS dated October 12, 2006 and filed in the office of the Oneida County Register of Deeds. A complete history of the corner can be found on the previous monument record. I accept the previous location as a true and faithful perpetuation or reestablishment of the original corner location and further perpetuate it as follows.

April 3, 2016: I found and accepted a perpetuation of the record monument, a Berntsen "Survey Mark" nail in the Westbound lane of U.S. Highway 8. The existing accessories were found in substantial agreement with the record and were not remeasured as the sole purpose of this work is to report the coordinates of the corner point.

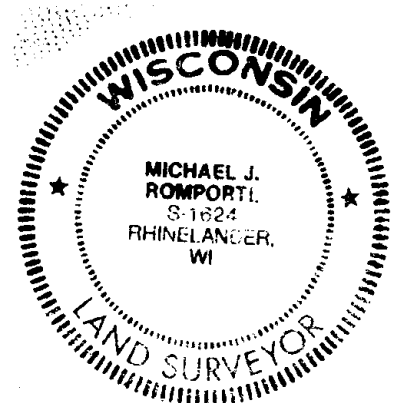
The coordinates shown were derived from two independent RTK observations of the corner point and are referenced to the WISCRS GNSS Network.

(c) (d) (e) Plan view of corner with ties to at least 4 witness monuments. If in disagreement with previously established corner, show the distances between the two corners and also indicate the ties to the disputed.

REGISTER OF DEEDS OFFICE
ONEIDA COUNTY
FILED

DEC 28 2016

AT _____ O'CLOCK _____ M
KYLE J. FRANSON
REGISTER OF DEEDS



(i) I, Michael J. Romportl, Professional Land Surveyor No. S-1624, hereby certify that the corner location on this record was determined by me or under my direction and control and that this U.S. Public Land Survey Monument Record is correct and complete to the best of my knowledge and belief.

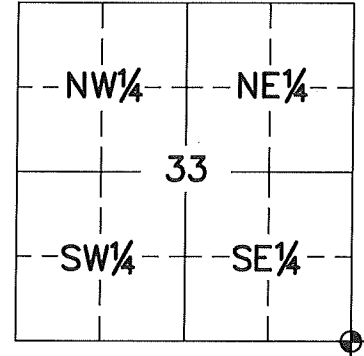
Michael J Romportl 12/23/2016
Signature Date

U.S. PUBLIC LAND SURVEY MONUMENT RECORD ONEIDA COUNTY, WISCONSIN.

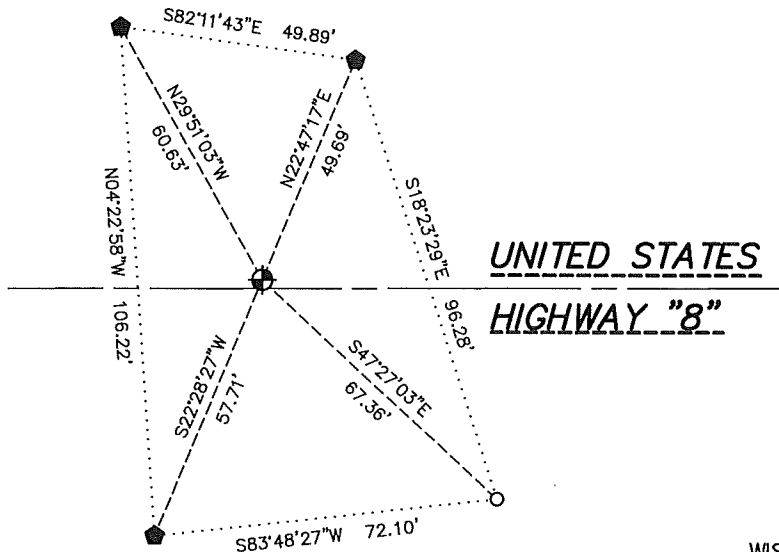
in accordance with Wisconsin Administrative Code, Chapter A-E 7.08 (3) (a)-(i) SIDE 1 OF 2

LOCATION (a) The identity of the corner, as referenced to the U.S. Public Land Survey System.

SECTION 33 - TOWN 36 NORTH - RANGE 4 EAST
 TOWNSHIP OF _____ LYNNE _____
 TYPE OF CORNER _____ SOUTHEAST CORNER _____
 TYPE OF MONUMENT _____ 1" OUTSIDE DIAMETER SURVEY NAIL _____
 PLSS IDENTIFIER NUMBER _____ 3604330000 _____
 NORTHING _____ 134838.2600' _____
 EASTING _____ 118024.2400' _____



PLAN VIEW (c) Reference to at least 4 witness monuments. Witness monuments shall be concrete, natural stone, iron, bearing trees or other equally durable material, except wood other than bearing trees; (d) A plan view drawing depicting the relevant monuments and reference ties which is sufficient in detail to enable accurate relocation of the corner monument if the corner monument is disturbed; (e) A description of any material discrepancy between the location of the corner as restored or reestablished and the location of that corner as previously restored or reestablished;



Oneida County
Land Information Office
Filed
1/22/2024

LEGEND

- SET 1" OUTSIDE DIAMETER SURVEY NAIL
- FOUND ALUMINUM REFERENCE MONUMENT
- SET 1" OUTSIDE DIAMETER x 18" IRON PIPE
WEIGHING 1.13 POUNDS PER LINEAR FOOT

WISCRS - ONEIDA COUNTY
 N: 134838.2600'
 E: 118024.2400'
 DATUM; NAD83 (2011)
 GNSS METHOD RTN - DIRECT
 GNSS CONTROL WISCORS VRS
 BEARING ORIENTATION:
 ONEIDA COUNTY GRID BEARINGS
 ROUNDED TO THE NEAREST 1 MINUTE
 HORIZONTAL SCALE: 1" = 40 FEET ±

RECOVERY PROCEDURES

(f) Whether the corner was restored through acceptance of an obliterated evidence location or a found perpetuated location;

LOCATION WAS PERPETUATED BY COUNTY COORDINATES AND FOUND SURVEY MARK NAIL FROM FIELD OBSERVATION, BY NATHAN S. FLAGSTAD, APRIL 19, 2023.

MICHEL J. ROMPORTL; DECEMBER, 2016:

FOUND SURVEY MARK NAIL IN WESTBOUND LANE OF UNITED STATES HIGHWAY "8". THE EXISTING ACCESSORIES WERE FOUND IN SUBSTANTIAL AGREEMENT WITH THE RECORD AND WERE NOT REMEASURED AS THE SOLE PURPOSE OF THIS WORK WAS TO REPORT THE COORDINATES OF THE CORNER POINT.

NATHAN S. FLAGSTAD; NOVEMBER 2023:

SURVEY NAIL LIKELY DESTROYED DUE TO ROAD CONSTRUCTION OF UNITED STATES HIGHWAY "8". SET 1" OUTSIDE DIAMETER SURVEY NAIL IN ASPHALT AT COUNTY COORDINATE POSITION. THREE TIE MONUMENTS ARE FROM PREVIOUS TIE SHEET. SET ONE NEW TIE, NEW MEASUREMENTS ARE AS SHOWN.



SURVEYOR'S CERTIFICATE

Chapter 7.08 (3) (i)

I, NATHAN S. FLAGSTAD, HEREBY CERTIFY THAT THE U.S. PUBLIC LAND SURVEY MONUMENT RECORD SHOWN WAS DETERMINED BY ME OR UNDER MY DIRECTION AND IS CORRECT AND COMPLETE TO THE BEST OF MY KNOWLEDGE AND BELIEF.

1/22/2024

NATHAN S. FLAGSTAD
WISCONSIN PROFESSIONAL LAND SURVEYOR S-3166

DATE

Real Land Surveying
1356 International Drive
Eau Claire, WI 54701

715-514-4116