

CERTIFIED LAND CORNER RESTORATION

Index No. Z-11

S 1/4 33-36-4  
From Lincoln City Files

State of Wisconsin

County of Lincoln } ss.

I, Robert H. Winat, do hereby certify that on the 15 day of January, 1973, I found evidence of the North 1/4 corner of Section 4 Township 35, Range 4, East 4, Fourth, Principal Meridian,

as described hereon; and that from this evidence I established a new monument and accessories as described hereon to perpetuate the original location of this corner.

Resident witnesses:

Ted Meyer

History of original corner establishment:

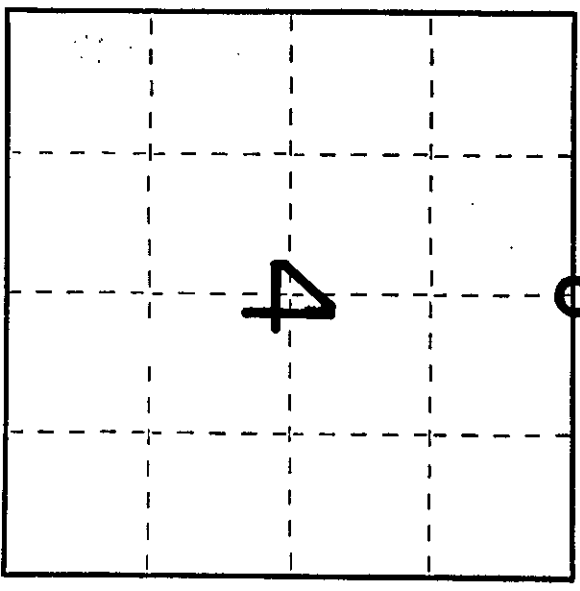
Alex Andersen  
July 1864  
Wood post  
10" Birch N72°W, 13 1k  
10" Hemlock S48°W, 18 1k

Description of corner evidence found:

Iron pipe in drill hole in concrete pavt.  
From the Division of Highway's survey records, this was verified to be the location of D.H. Vaughn's 1914 iron monument (said 2" x 2" x 18" iron stake of Vaughn was apparently reset 33.2 feet north of Burnett's iron pipe, although Burnett does not state that he did same in 1923 re-survey).

Description of monument and accessories I established to perpetuate the original location of this corner.  
Reprints monuments 36" - 4' south of centerline of U. S. Highway "8"

Ties  
NE corner foundation green and white house S52°W, 121.17'  
9" Balsam PK/Aisc S33°E, 57.68'  
R/W post PK/Aisc North, 49.68'  
SE corner foundation east entrance to tavern-grocery building N44°W, 65.85'  
2" sq. x 18" iron pin north, 33.2' (1 foot below surface)



○ = Corner monument restored.

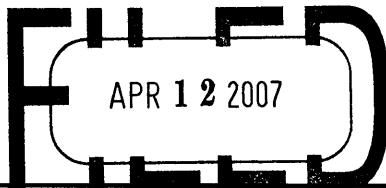
Dated at Manitowish, Wis., this 19th day of November, 1974.

Signature Peter A. Kinnel Title Land Surveyor Registration No. S-1040  
(County Surveyor, Registered Land Surveyor, or other duly authorized official)

Office of Register of Deeds, County of \_\_\_\_\_, I hereby certify that the within instrument was filed in this office for record on the \_\_\_\_\_ day of \_\_\_\_\_, 19\_\_\_\_ at \_\_\_\_\_ o'clock \_\_\_\_\_ M.

(Register of Deeds)

By \_\_\_\_\_ Deputy



**U.S. PUBLIC LAND SURVEY MONUMENT RECORD**

NOTE: This form is intended and designed to fulfill all requirements of Wisconsin Administrative Code, Chapter A-E 7.08 U.S. Public Land Survey Monument Record (3)(a)(b)(c)(d)(e)(f)(g)(h)(i). An additional sheet may be added if necessary to conform with said requirements.

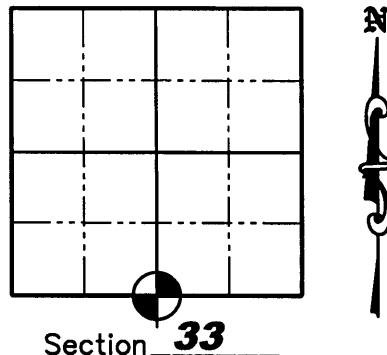
(a) Corner location: Township 36 North

Range 4 East

Town of LYNNE

County ONEIDA

Oneida County Northing 134838.138  
Coordinates Easting 115409.128



(b)(f)(g)(h) Description of monument found at this corner and if it was accepted, state all evidence (material, testimonial, occupation, plats, records, other monuments) used as a basis for accepting. If not accepted or if nothing was found, state evidence used as a basis for establishing location. If reestablished through lost corner proportionate methods, indicate all monuments, distances and directions used to establish. Indicate type of monument found or set and sign post.

7/1864- Alex Anderson, set wood post at 1/4 Section Corner. B.T.'s; Birch 10", N72°W 13lks; Hemlock 10", S48°W 18 lks.

1914- D.H. Vaughan identified corner as a 2 by 2 by 18 inch iron monument and made new BT's: W. Pine stump 36" North, 57 lks., Telephone Pole S4°E 35.25lks.

9/24/1923- D.S. Burnett found BT's established by D.H. Vaughan for the 1/4 corner: Pine stump 36" North 57 lks., Telephone Pole S4°E 35.25 lks. He dug for corner and found iron monument. HE set sew monument and set no new reference monuments.

01/15/1973- Robert H. Winat, RLS S-1040, found iron pipe in drill hole in concrete pavement from the Division of Highway's survey records. He verified this to be the location of D.H. Vaughn's 1914 iron monument (said 2"x2"x18" stake of Vaughn was apparently reset 33.2 feet North of Burnett's iron pipe, although Burnett does not state that he did same in 1923 re-survey). He set a 36" Bernsten monument 4' South of the centerline of U.S. Highway "8". Ties: NE corner foundation green and white house, (now a red and white), S52°W, 121.17', 9" Balsam PK/disc S33°E, 57.68', R/W post PK/disc North, 49.68', SE corner top step east entrance to tavern-grocery building (now torn down) N44°W, 65.85', 2" sq. X 18" iron pin North, 33.2' (1 foot below surface).

6/13/1983- Jack Wallin, Survey Crew Chief Wis. D.O.T., Shows the corner location in U.S. Hwy 8. Set 4 Bernsten Alum. Witness Monuments as follows; N01°45'E, 45.67'; N45°51'E, 67.54'; S48°47'E, 59.10'; S01°45'W, 45.08'.

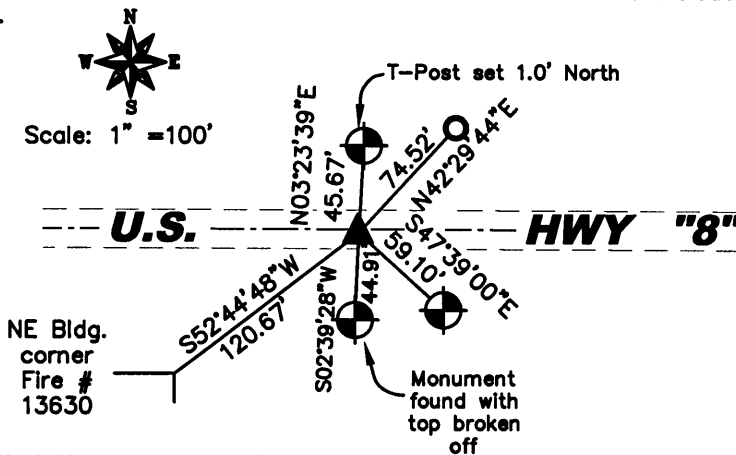
8/14/2006- Matthew E. Hoglund, R.L.S. S-1910, found 3 out of 4 D.O.T. aluminum witness monuments and the NE building corner and set a PK nail at the corner location as shown hereon. Oneida County coordinates determined from total station traverse from GPS pair surveyed by Jeff Austin R.L.S.

(c)(d)(e) Plan view of corner with ties to at least 4 witness monuments. If in disagreement with previously established corner, show the distances between the two corners and also indicate the ties to the disputed corner.

**LEGEND**

- D.O.T. Aluminum Reference Monument Found
- 3/4" x 24" Iron Rebar Set Weighing 1.50 lbs/lin ft.
- Set P.K. Nail

Project # 732



(i) I, Matthew E. Hoglund, certify that the corner location on this record was determined by me under my direction and control and that this U.S. Public Land Survey Monument is correct and complete to the best of my knowledge and belief.

Signature Matthew E. Hoglund Date 10/12/2006

Proj. # 732

**MATTHEW E. HOGLUND**  
S-1910  
TOMAHAWK  
WI  
LAND SURVEYOR

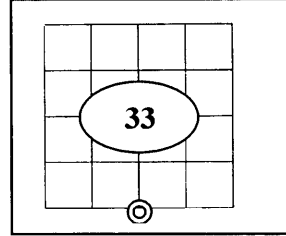
3604330020

11-2

## U.S. PUBLIC LAND SURVEY MONUMENT RECORD

Note: This form is intended and designed to fulfill all requirements of Wisconsin Administrative Code Chapter A-E 7.08 (3) (a-i).

(a) Corner: South 1/4  
 Section: 33  
 Township: 36 N.  
 Range: 04 E.  
 Town: Lynne  
 County: Oneida



(b) History of Original Corner

Original Surveyor	Alexander Anderson	Original B.T.'s	
Date of Survey	1864	10" Birch	N72°W 13 links
		10" Hemlock	S48°W 18 links

- In 1864 Alexander Anderson/GLO set a wood post as original section corner and made the above ties, all are now obliterated.
- (f)(g)(h) Description of monument found at this corner and if it was accepted, state all evidence (material, testimonial, occupational, plats, records, and other monuments) used as a basis for establishing location. If reestablished through last corner proportionate methods, indicate all monuments, distances and directions used to establish. Indicate type of monument and signpost found or set.
- In 1914 D.H. Vaughan identified corner as a 2 by 2 by 18" iron monument and made new BT's: 36" W. Pine stump North 57 links; Telephone pole S 4°E, 35.25 links.
- On 9/24/1923 D.S. Burnet found BT's established by D.H. Vaughan for the 1/4 corner; 36" Pine stump North 57 links, a Telephone Pole S 4° E 35.25 links. He dug for corner and found iron monument. He set new monument and set no new reference monuments.
- On 1/15/1973 Robert H. Winat /RLS, found iron pipe in drill hole in conc. pavement from the Division of Highways survey records. He verified this to be the location of D.H. Vaughn's 1914 iron monument (said 2" X 2" X 18" stake of Vaughn was apparently reset 33.2' North of Burnett's iron pipe, although Burnett does not state that he did same in 1923 re-survey). He set a 36" Berntsen monument 4' South of the centerline of U.S.H. 8. Ties: N.E. corner foundation green and white house, (now red and white) S 52° W, 121.17'; 9" Balsam PK/disc S 33° E, 57.68'; R/W post PK/disc North, 49.68'; S.E. corner top step east entrance to tavern-grocery building (now torn down) N 44°W, 65.85'; 2" X 2" X 18" iron pine North, 33.2'(1 foot below surface).
- On 6/13/1983 Jack Wallin, Wis. DOT survey crew chief shows the corner location in U.S.H. 8 and set 4 Berntsen Alum. Witness Monuments as follows: N 1°45'E, 45.67'; N 45°51'E, 67.54'; S 48°47'E, 59.10'; and S 01°45'W, 45.08'.
- On 8/14/2006 Matthew E. Hoglund, R.L.S. S-1910, found 3 out of the 4 D.O.T. aluminum witness monuments and the N.E. building corner he set an additional Tie a 3/4" by 24" Rebar N 42° 29'44" E, 74.52', he set a P.K. nail at the corner location as shown on Tie sheet #Z11 (3604330020).
- In summer of 2008 the corner was obliterated due to Highway mill and over lay construction. In Oct. 2008 I (Allen P. Oleink RLS #2619 WI D.O.T.) reset a survey nail flush with highway pavement, based on the record distances from witness monuments shown on Hoglund's Tie sheet.

REGISTER OF DEEDS OFFICE  
 ONEIDA COUNTY, WIS.

**FILED**  
 FEB 19 2009

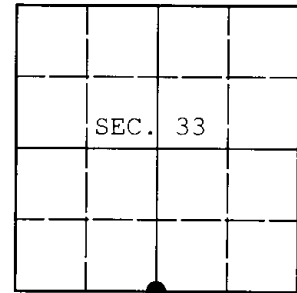
At \_\_\_\_\_ O'Clock \_\_\_\_\_ M  
**THOMAS H. LEIGHTON**  
 REGISTER OF DEEDS



**U.S. PUBLIC LAND SURVEY MONUMENT RECORD**

Note: This form is intended and designed to fulfill all requirements of Wisconsin Administrative Code, Chapter A-E 7.08 U.S. Public Land Survey Monument Record (3) (a) (b) (c) (d) (e) (f) (g) (h) (i). An additional sheet may be added if necessary to conform with said requirements.

(a) CORNER LOCATION: WISCORS - Oneida County  
1/4 Cor. of Secs. 4 & 33 N: 134,838.01 USft  
Township 35 & 36 North E: 115,409.14 USft  
Range 4 East of the 4th P.M. Datum: NAD 1983(2011)  
Town of Lynne County of Oneida



(b) HISTORY OF ORIGINAL CORNER ESTABLISHMENT

Original Surveyor: Original Accessories:  
Date of Survey: Commenced:  
Completed:

(b) (f) (g) (h) Description of monument found at this corner and if it was accepted, state all evidence (material, testimonial, occupational, plats, records, other monuments) used as a basis for accepting. If not accepted or if nothing was found, state evidence used as basis for establishing location. If re-established through lost corner proportionate methods, indicate all monuments, distances and directions used to establish. Indicate type of monument and sign post found or set.

NOTE: This is a perpetuation of a previous USPLS Monument Record by Matthew E. Hoglund, RLS dated October 12, 2006 and filed in the office of the Oneida County Register of Deeds. A complete history of the corner can be found on the previous monument record. I accept the previous location as a true and faithful perpetuation or reestablishment of the original corner location and further perpetuate it as follows.

April 3, 2016: I found and accepted a perpetuation of the record monument, a Berntsen "Survey Mark" nail in the Eastbound lane of U.S. Highway 8. The existing accessories were found in substantial agreement with the record and were not remeasured as the sole purpose of this work is to report the coordinates of the corner point.

The coordinates shown were derived from two independent RTK observations of the corner point and are referenced to the WISCORS GNSS Network.

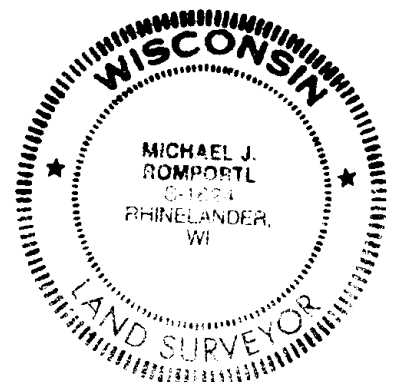
(c) (d) (e) Plan view of corner with ties to at least 4 witness monuments. If in disagreement with previously established corner, show the distances between the two corners and also indicate the ties to the disputed.

REGISTER OF DEEDS OFFICE  
ONEIDA COUNTY  
FILED

DEC 28 2016

AT \_\_\_\_\_ O'CLOCK \_\_\_\_\_ M  
KYLE J. FRANSON  
REGISTER OF DEEDS

(i) I, Michael J. Romportl, Professional Land Surveyor No. S-1624, hereby certify that the corner location on this record was determined by me or under my direction and control and that this U.S. Public Land Survey Monument Record is correct and complete to the best of my knowledge and belief.



Michael J Romportl 12/23/2016  
Signature Date