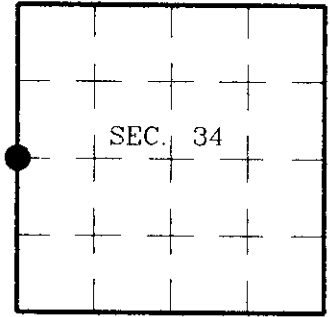


# U.S. PUBLIC LAND SURVEY MONUMENT RECORD

Note: This form is intended and designed to fulfill all requirements of Wisconsin Administrative Code, Chapter A-E 7.08 U.S. Public Land Survey Monument Record (3)(a)(b)(c)(d)(e)(f)(g)(h)(i). An additional sheet may be added if necessary to conform with said requirements.

(a) CORNER LOCATION: State Plane Coordinates  
 West 1/4 Corner of Section 34 X  
 Township 36 North Y  
 Range 4 East Datum Base  
 Town of Lynne County of Oneida



(b) HISTORY OF ORIGINAL CORNER ESTABLISHMENT

Original Surveyor: Edward Palmer  
 Date of Survey: Commenced May, 1865  
 Completed June, 1865

Original B.T.s

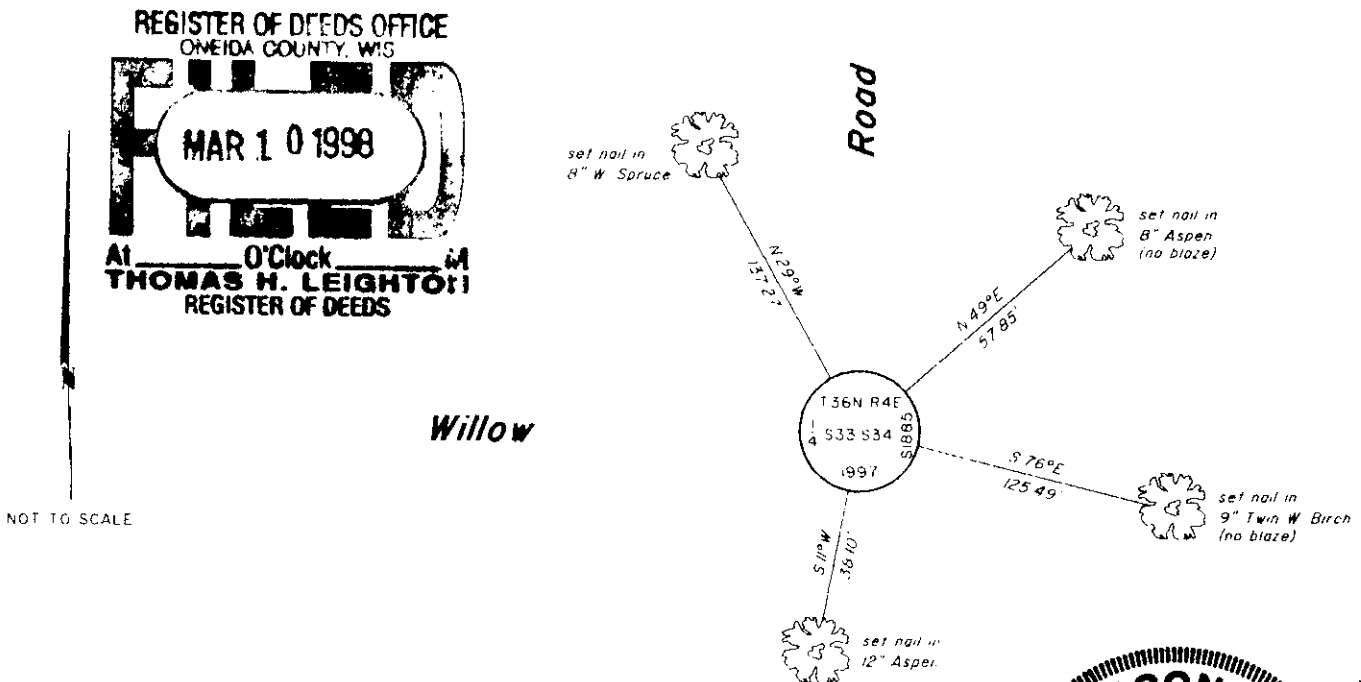
Hemlock 10" N23°W, 21 lks.  
 Birch 14" S70°E, 13 lks.

(b)(f)(g)(h) Description of monument found at this corner and if it was accepted, state all evidence (material, testimonial, occupational, plats, records, other monuments) used as a basis for accepting. If not accepted or if nothing was found, state evidence used as basis for establishing location. If reestablished through lost corner proportionate methods, indicate all monuments, distances and directions used to establish. Indicate type of monument and sign post found or set.

1923: Lynn Vaughan set an iron by single proportionate measure finding it 39.505 chs. South of the Section Cor. and in the centerline of roads going North and West. New BTs W. Pine stp. 16 N82°E, 43.25 lks. and W. Pine stp. 16 S34°W, 35 lks.

October 8, 1997: I found and accepted a bent 1-1/4" dia., 30" long iron pipe at the road centerline intersection as shown below. The distance to the Northwest Section Cor. checks Vaughan's distance very well. I was unable to recover either of Vaughan's stumps. I replaced the pipe with a 2-1/2" dia., 30" long aluminum pipe with 3-1/4" dia. Oneida Co. aluminum cap 4" above grade and marked as shown below. I established accessories as shown below and set a plastic sign post South, 1-1/2 feet.

(c)(d)(e) Plan view of corner with ties to at least 4 witness monuments. If in disagreement with previously established corner, show the distances between the two corners and also indicate the ties to the disputed.



(i) I, Jeffrey W. Austin, Registered Land Surveyor S-1885, hereby certify that the corner location on this record was determined by me or under my direction and control and that this U.S. Public Land Survey Monument Record is correct and complete to the best of my knowledge and belief.



INDEX NO. X-13  
 4360432000

Signature \_\_\_\_\_ Date 2-13-98