

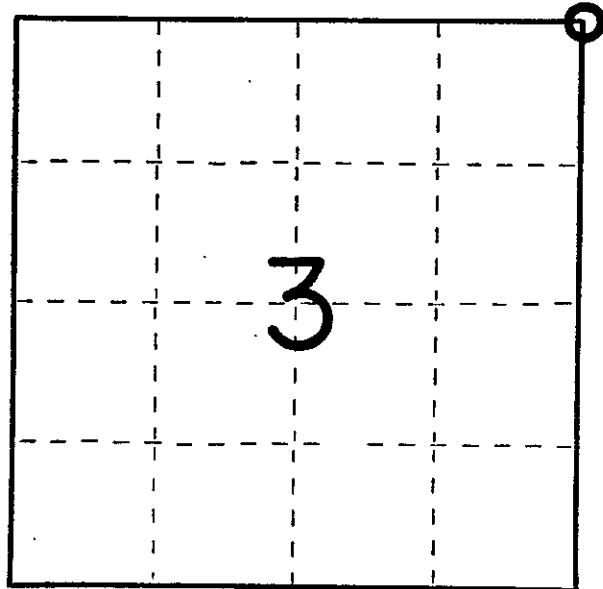
CERTIFIED LAND CORNER RESTORATION

Index No. Z-17
SE Cor 34-36-4
From Lincoln City Files

State of Wisconsin }
County of Lincoln } ss.

I, Robert H. Winat, do hereby certify that on the 12th day of January, 19 73, I found evidence of the Northeast corner of Section 3 Township 35, North, Range 4 East, Fourth, Principal Meridian, as described hereon; and that from this evidence I established a new monument and accessories as described hereon to perpetuate the original location of this corner.

Resident witnesses:



○ = Corner monument restored.

History of original corner establishment:

Alex Anderson
July 1864
Wood stake set
15" White Pine N50°W 48 lk
14" Spruce N70°W, 62 lk
5" Alder S20°W, 5 lk

Description of corner evidence found:

Corner re-established at the intersection of U.S. Highway "8" and the north-south town road locations by using the Division of Highway's 1925 survey information. This location appears to be D.S. Burnett's corner of 1923, i.e.,
A notch in the bridge abuttment wall, at the intersection of the centerlines of the roads.

Description of monument and accessories I established to perpetuate the original location of this corner.

Berntsen monument 36"
2.0' N. of centerline of U.S. Highway "8" at the intersection with E. End Road
Ties
Rd. sign post N25°W, 43.15'
PK in power pole N32°W, 55.05'
Nail in power pole N16°E, 74.95'
PK in Double Elm N11°W, 110.00'

Dated at Minosque, Wis., this 19th day of November, 1974.

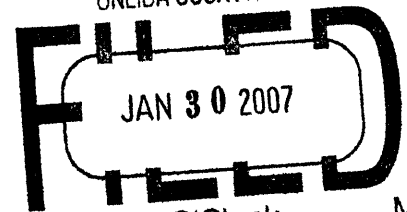
Signature Robert H. Winat Title Land Surveyor Registration No. 5-1040
(County Surveyor, Registered Land Surveyor, or other duly authorized official)

Office of Register of Deeds, County of _____, I hereby certify that the within instrument was filed in this office for record on the _____ day of _____, 19____ at _____ o'clock _____ M.

(Register of Deeds)

By _____ Deputy

3604340000



At _____ O'Clock _____ M
THOMAS H. LEIGHTON
REGISTER OF DEEDS

Recorders Data

This form is intended to fulfill the requirements of Chapter A-E7.08 (3)(a) thru (i) U.S. Public Land Survey Monument Location Record, Wisconsin Administrative Code. Use the reverse side of form for continuation.

U.S. PUBLIC LAND SURVEY MONUMENT LOCATION RECORD

USPLS CORNER: SE SECTION: 34 TOWNSHIP: 36 NORTH RANGE: 4 EAST
 NAME OF WATERWAY FOR M.C. CORNER : N/A SECTION LINE: N/A
 (CITY)(VILLAGE)(TOWN) OF: LYNNE COUNTY OF: ONEIDA

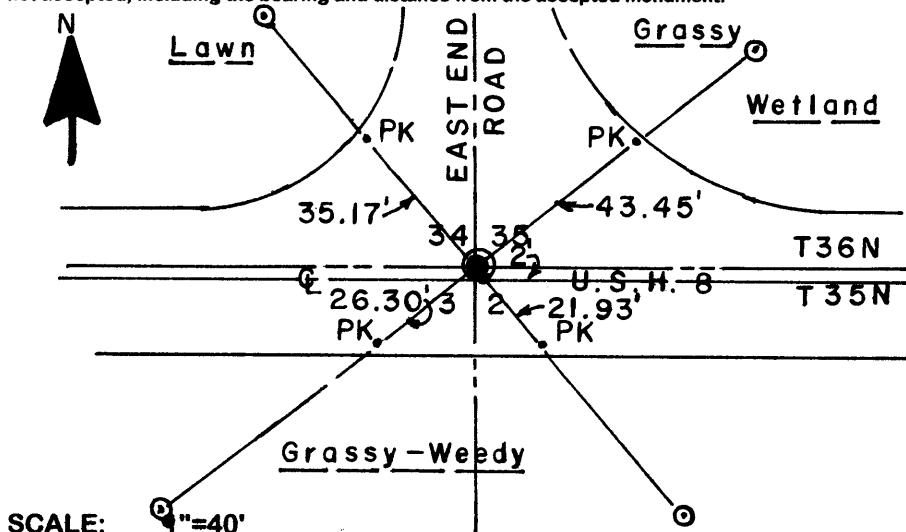
Description of monument found or placed and all other evidence used as the basis for monument location; including monuments and measurements required if the corner location was reestablished by lost corner proportionate methods. Also indicate name of the original surveyor, original survey date and the corner monument, bearing trees, witness or other reference monuments established, including measured bearing and distance ties, from available survey records.

In July 1864, Alexander Anderson/GLO set a wood post as this section corner and noted OBTs: a 15" Pw N50°E 48 links, a 14" Sb N70°W 62 links and a 5" Alder S20°W 5 links; all are now obliterated.

Robert H. Winat/RLS 1040 reestablished this corner as located by a Wisconsin Division of Highways survey in 1925 and set a standard Berntsen cast aluminum monument 2' North of the centerline of USH 8 at intersection with East End Road and noted witnesses: a road sign post N25°W 43.15'; a PK spike in power pole N32°W 55.05', now gone; a nail in power pole N16°E 74.95', no nail found, and a PK spike in a double Elm N11°W 110.00', now gone, per his Certified Land Corner Restoration dated November 19, 1974. In June 1983, John Wallin, Wisconsin D.O.T survey crew chief filed a standard Preservation of Landmark form with the Oneida County Surveyor, with corner location references to a standard Berntsen cast aluminum monument set flush N40°34'W 77.94', N51°26'E 73.11', S40°34'E 67.47' and S51°26'W 84.29' on right lines thru corner monument location in USH 8, which I could not detect, so I reset the corner with a 1/4" dia. by 2.5" long Mag nail into existing highway pavement at the intersection of right lines between all 1983 witness monuments found OK at record measurements on September 6, 2006; there were no direct witnesses. I set a blaze orange wire stake flag at each witness monument. This corner rereferenced with approval of Oneida County Surveyor Michael Romporti.

In June 1991, Glen Barker/RLS 1682 noted an 'X' in concrete pavement at this corner per retracement survey of Section 35 filed as B-3036 in Oneida County survey records. I did not chisel out existing pavement to find in concrete pavement below as all 1983 Wisconsin D.O.T references found OK to verify corner location of record.

Plan view map of monument location with bearing and distance ties to a minimum of four(4) described witness or reference monuments of concrete, natural stone, iron, live bearing trees or equivalent material. If applicable, also show a minimum of two(2) bearing and distance ties to any other monument found and not accepted; including the bearing and distance from the accepted monument.



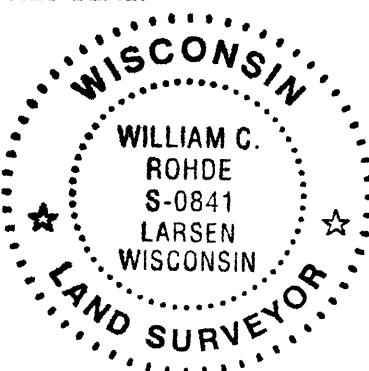
WITNESS MONUMENT TIES:

See foregoing narrative for four (4) cast aluminum monuments found OK per 1983 Preservation of Landmark record filed by Wisconsin D.O.T in Oneida County survey records.

No standard white poly 'T' marker post set near any witness monument due to subsurface soil conditions.

Unless otherwise indicated, all bearing tree ties are to a .25" dia. by 2.5" long PK nail with a 1.25" dia. steel washer driven into unblazed right face and a .25" dia. by 2.5" long PK nail with a 2" dia. steel washer stamped BT is also driven into unblazed face of bearing tree at DBH; the basis for measured bearings is by compass to nearest degree and all tie distances are measured horizontal by steel tape corrected to nearest 1/100th feet at standard temperature of 68° F.

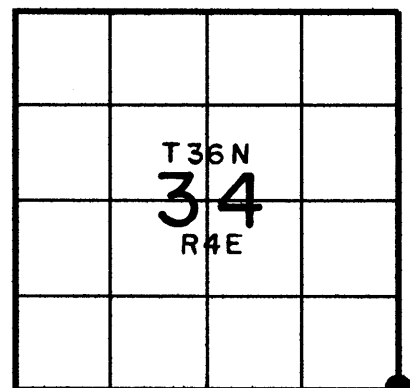
RLS SEAL:



LAND SURVEYOR CERTIFICATE:

I, William C. Rohde, hereby certify that I am duly licensed as a Professional Land Surveyor in the State of Wisconsin; that this USPLS monument location was determined by me and/or under my direct supervision and control; and that this U.S. Public Land Survey Monument Location Record is true and correct to the best of my knowledge and belief.

Signed: *William C. Rohde*
William C. Rohde RLS 841

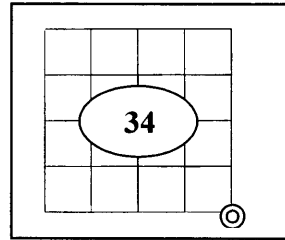


SECTION LOCATION MAP
INDEX NO. 217
3604340000

U.S. PUBLIC LAND SURVEY MONUMENT RECORD

Note: This form is intended and designed to fulfill all requirements of Wisconsin Administrative Code Chapter A-E 7.08 (3) (a-i).

(a) Corner: South East
 Section: 34
 Township: 36 N.
 Range: 04 E.
 Town: Lynne
 County: Oneida



(b) History of Original Corner

Original Surveyor	Alexander Anderson	Original B.T.'s	
Date of Survey	1864	15" Pw	N50°E 48 links
		14" Sb	N70°W 62 links
		5" Alder	S20°W 5 links

- In 1864 Alexander Anderson/GLO set a wood post as original section corner and made the above ties, all are now obliterated.

(f)(g)(h) Description of monument found at this corner and if it was accepted, state all evidence (material, testimonial, occupational, plats, records, other monuments) used as a basis for establishing location. If reestablished through last corner proportionate methods, indicate all monuments, distances and directions used to establish. Indicate type of monument and sign post found or set.

- In 1974 Robert H. Winat /RLS reestablished the corner as located by a (Wis. Division of Highways survey 1925) and set a standard Berntsen alum. Monument 2' North of the centerline of USH 8 at the intersection with East End Rd and noted these witnesses: a Road signpost N 25°W 43.15'; a PK nail in a Power pole N 32°W 55.05'; a nail in Power pole N 16°E 74.95' and a PK nail in a double Elm N 11°W 110.00', per his Cert. Land Corner Restoration form Nov. 19 1974.
- In June 1983, John Wallin, Wis. DOT survey crew chief filed a standard Preservation of Landmark form with Oneida Co. Surveyor, with corner location references to standard Berntsen Alum. Monument set flush N 40°34'W, 77.94'; N 51°26'E, 73.11'; S 40°34'E, 67.47'; and S 51°26'W, 84.29' on right lines thru corner monument location in USH 8.
- In June 1991 Glen Barker/RLS noted an "X" in concrete pavement at this corner per his re-tracement survey of Section 35 filed as B-3036 in Oneida Co. survey records
- In Jan. 2007 William C Rohde/RLS reset the corner with a 1/4" by 2.5" Mag. Nail at the intersection of right lines between all 1983 witness monuments found OK at record measurements. As noted on Tie sheet #Z19 (3604350020).
- In summer of 2008 the corner was obliterated due to Highway mill and over lay construction. In Oct. 2008 I (Allen P. Oleink RLS #2619 WI D.O.T.) reset a survey nail flush with highway pavement, based on the record distances from existing non-disturbed witness monuments. The northeast Witness mark was found disturbed a new mark was set and a new distance was taken to the disturbed mark. The southwest Witness mark was found disturbed a new mark was set and a new distance was taken to the disturbed mark.

REGISTER OF DEEDS OFFICE
 ONEIDA COUNTY, WIS.

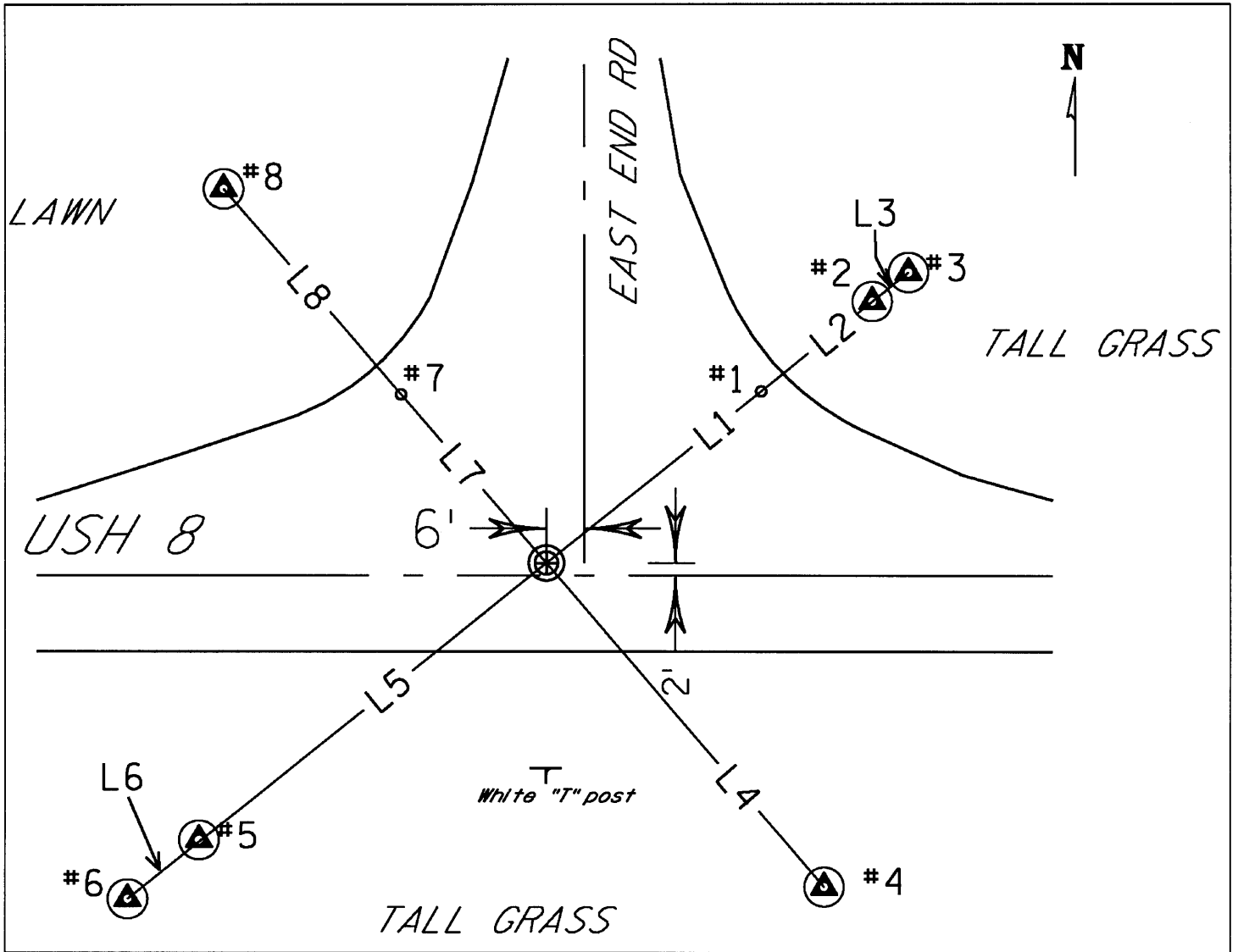
FILED

FEB 19 2009

At _____ O'Clock _____ M
THOMAS H. LEIGHTON
 REGISTER OF DEEDS

360434 0000

(c)(d)(e) Plan view of corner with ties to at least 4 witnesses. If in disagreement with previously established corner, show the distance between the two corners and also indicate the tie to the disputed corner.



LEGEND:

- Corner is a survey nail set flush into pavement
- #1- Found a PK nail near edge of concrete gutter.
- #2- Set 3/4" by 24" rebar with red DOT cap.
- #3- Found broken Aluminum Monument base.
- #4- Found Cast Aluminum Monument.
- #5- Set 3/4" by 24" rebar with red DOT cap.
- #6- Found broken Aluminum Monument base.
- #7- Found a PK nail near edge of concrete gutter.
- #8- Found Cast Aluminum Monument.

COURSE TABLE:

Bearings orientated to Oneida Co. Coordinate system NAD 83 (1991)

L1	N51°10'05"E	43.45'
L2	N51°10'05"E	66.00'
L3	N51°10'39"E	73.35'
L4	S40°30'14"E	67.47'
L5	S51°10'05"W	70.00'
L6	S50°58'23"W	84.62'
L7	N40°33'12"W	35.17'
L8	N40°32'13"W	77.94'

(i) I, Allen P Oleinik, Registered Land Surveyor No 2619, hereby Certify that I referenced the corner location on this record And that this U.S. Public Land Survey Monument Record is correct and complete to the best of my knowledge and belief.

Allen P. Oleinik 2-17-09
Signature Date



Index No. 2-17

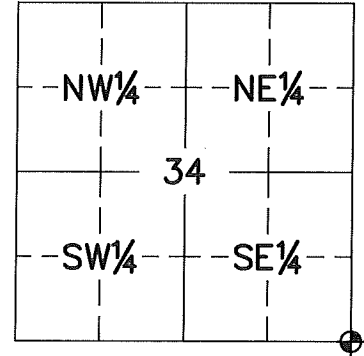
360434 0000

U.S. PUBLIC LAND SURVEY MONUMENT RECORD ONEIDA COUNTY, WISCONSIN.

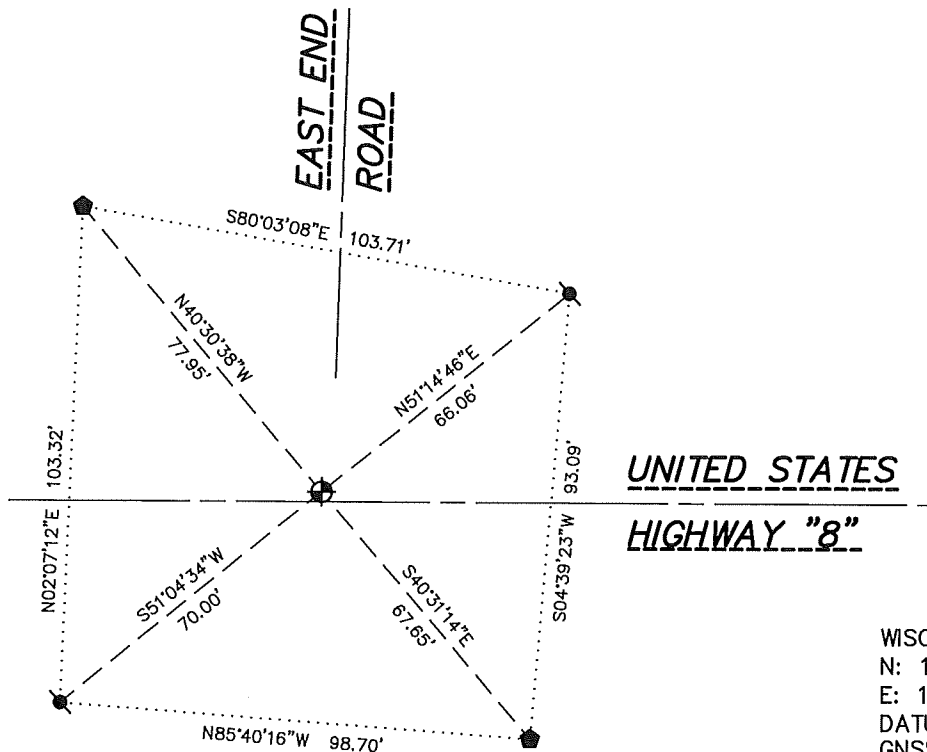
in accordance with Wisconsin Administrative Code, Chapter A-E 7.08 (3) (a)-(i) SIDE 1 OF 2

LOCATION (a) The identity of the corner, as referenced to the U.S. Public Land Survey System.

SECTION 34 - TOWN 36 NORTH - RANGE 4 EAST
 TOWNSHIP OF _____ LYNNE _____
 TYPE OF CORNER _____ SOUTH 1/4 CORNER _____
 TYPE OF MONUMENT _____ 1" OUTSIDE DIAMETER SURVEY NAIL _____
 PLSS IDENTIFIER NUMBER _____ 3604340000 _____
 NORTHING _____ 134820.4110' _____
 EASTING _____ 123284.7000' _____



PLAN VIEW (c) Reference to at least 4 witness monuments. Witness monuments shall be concrete, natural stone, iron, bearing trees or other equally durable material, except wood other than bearing trees; (d) A plan view drawing depicting the relevant monuments and reference ties which is sufficient in detail to enable accurate relocation of the corner monument if the corner monument is disturbed; (e) A description of any material discrepancy between the location of the corner as restored or reestablished and the location of that corner as previously restored or reestablished;



LEGEND

- SET 1" OUTSIDE DIAMETER SURVEY NAIL
- FOUND 3/4" REBAR WITH CAP
- FOUND ALUMINUM MONUMENT

WISCORS - ONEIDA COUNTY
 N: 134820.4110'
 E: 123284.7000'
 DATUM; NAD83 (2011)
 GNSS METHOD RTN - DIRECT
 GNSS CONTROL WISCORS VRS

BEARING ORIENTATION:
 ONEIDA COUNTY GRID BEARINGS
 ROUNDED TO THE NEAREST 1 MINUTE
 HORIZONTAL SCALE: 1" = 40 FEET ±

RECOVERY PROCEDURES

(f) Whether the corner was restored through acceptance of an obliterated evidence location or a found perpetuated location;

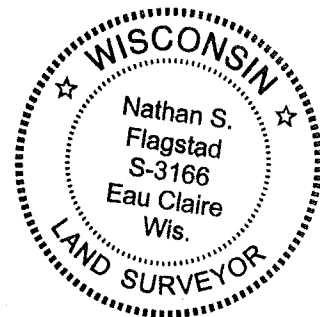
LOCATION WAS PERPETUATED BY COUNTY COORDINATES AND FOUND SURVEY MARK NAIL FROM FIELD OBSERVATION, BY NATHAN S. FLAGSTAD, APRIL 19, 2023.

ALLEN P. OLEINIK; OCTOBER, 2008:

SUMMER OF 2008 THE CORNER WAS OBLITERATED DUE TO HIGHWAY MILL AND OVERLAY CONSTRUCTION. RESET SURVEY NAIL FLUSH WITH HIGHWAY PAVEMENT, BASED ON THE RECORD DISTANCES FROM EXISTING NON-DISTURBED WITNESS MONUMENTS. NORTHEAST WITNESS MARK WAS FOUND DISTURBED, A NEW MARK WAS SET AND A NEW DISTANCE WAS TAKEN TO THE DISTURBED MARK. SOUTHWEST WITNESS MARK WAS FOUND DISTURBED, A NEW MARK WAS SET AND A NEW DISTANCE WAS TAKEN TO THE DISTURBED MARK.

NATHAN S. FLAGSTAD; NOVEMBER 2023:

SURVEY NAIL LIKELY DESTROYED DUE TO ROAD CONSTRUCTION OF UNITED STATES HIGHWAY "8". SET 1" OUTSIDE DIAMETER SURVEY NAIL IN ASPHALT AT COUNTY COORDINATE POSITION. FOUR TIE MONUMENTS ARE FROM PREVIOUS TIE SHEET BY ALLEN P. OLEINIK. NEW MEASUREMENTS ARE AS SHOWN.



SURVEYOR'S CERTIFICATE

Chapter 7.08 (3) (i)

I, NATHAN S. FLAGSTAD, HEREBY CERTIFY THAT THE U.S. PUBLIC LAND SURVEY MONUMENT RECORD SHOWN WAS DETERMINED BY ME OR UNDER MY DIRECTION AND IS CORRECT AND COMPLETE TO THE BEST OF MY KNOWLEDGE AND BELIEF.

11/22/24

NATHAN S. FLAGSTAD
WISCONSIN PROFESSIONAL LAND SURVEYOR S-3166

DATE

Real Land Surveying
1356 International Drive
Eau Claire, WI 54701

715-514-4116